

NOTES:

MATERIALS OF CONSTRUCTION:

HOUSING

MATERIAL OF CONSTRUCTION PER ORDER REQUIREMENTS. AVAILABLE OPTIONS INCLUDE:
 OPTION 1: CARBON STEEL & 304 S/S WHERE PRODUCT CONTACTS WITH 316 S/S FLUIDIZING MEDIA
 OPTION 2: 304 S/S WHERE PRODUCT CONTACTS WITH 316 S/S FLUIDIZING MEDIA
 OPTION 3: 316 S/S WHERE PRODUCT CONTACTS WITH 316 S/S FLUIDIZING MEDIA

AUGER

MATERIAL OF CONSTRUCTION PER ORDER REQUIREMENTS. AVAILABLE OPTIONS INCLUDE:
 OPTION 1: POLYETHYLENE FLIGHTING WITH STAINLESS STEEL HEX SHAFT
 OPTION 2: FABRICATED CARBON STEEL
 OPTION 3: FABRICATED STAINLESS STEEL

MOTOR/DRIVE (PER ORDER REQUIREMENTS)

AVAILABLE OPTIONS INCLUDE:
 OPTION 1: 1/8 HP MOTOR, 90 VDC, TENV WITH RIGHT-ANGLE REDUCER
 OPTION 2: 1/4 HP MOTOR, 3 PH 230V, TENV WITH RIGHT-ANGLE REDUCER
 OPTION 3: 1/2 HP MOTOR, 3 PH 230V, TENV WITH RIGHT-ANGLE REDUCER
 OPTION 4: CUSTOM MOTOR AND/OR REDUCER, PER ORDER

NOTES:

- * STANDARD REDUCER CAST ALUMINUM CONSTRUCTION
- * OPTIONAL UPGRADE TO CAST S/S CONSTRUCTION
- * EXPLOSION PROOF AND WASHDOWN DUTY MOTORS ARE ALSO AVAILABLE

FEEDING APPLICATIONS:

- VOLUMETRIC FEEDING
- GRAVIMETRIC BATCH FEEDING (WHEN INSTALLED IN STS-2 FEEDER PACKAGE)
- GRAVIMETRIC CONTINUOUS FEEDING (WHEN INSTALLED IN STS-2 FEEDER PACKAGE)

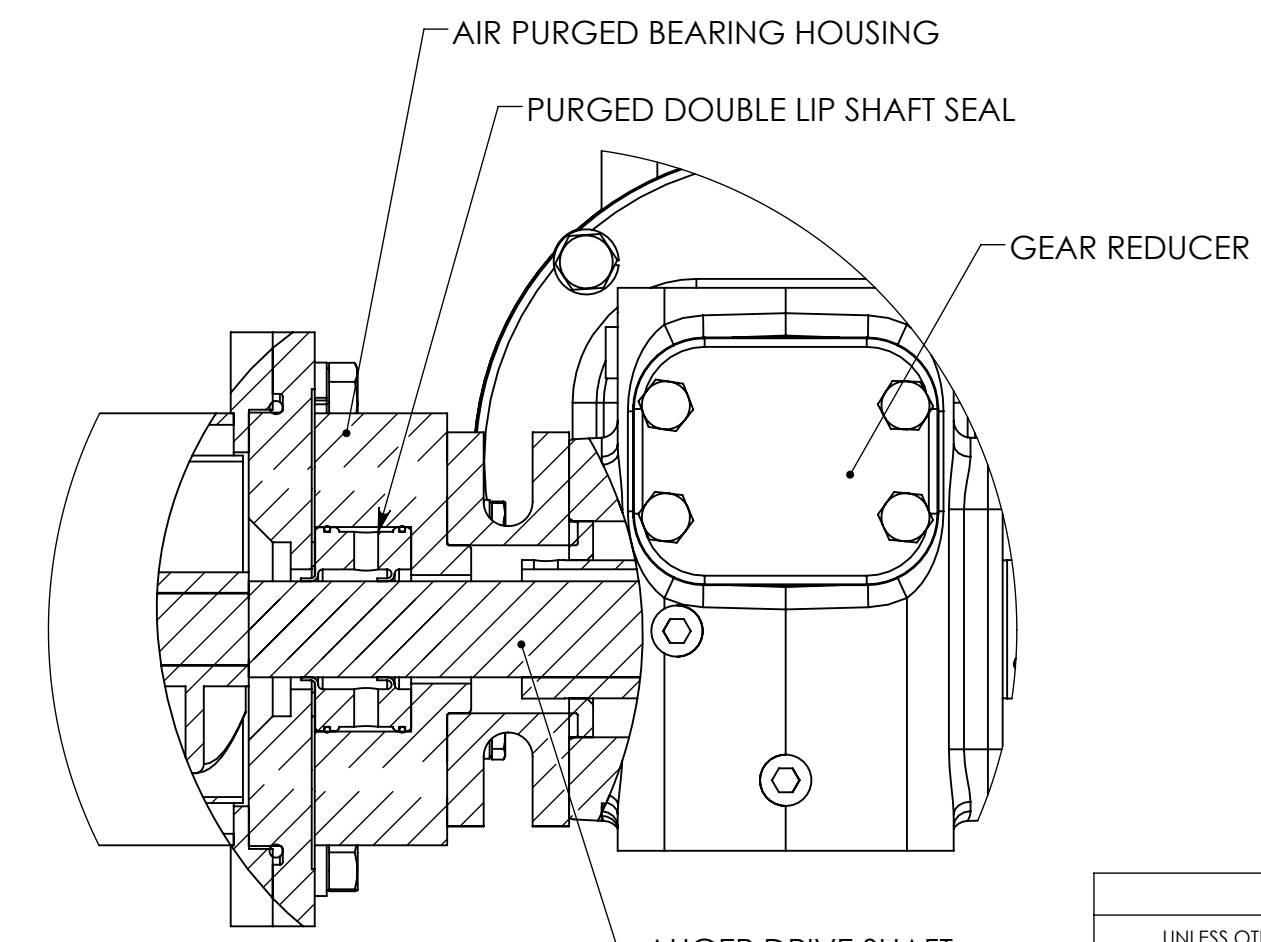
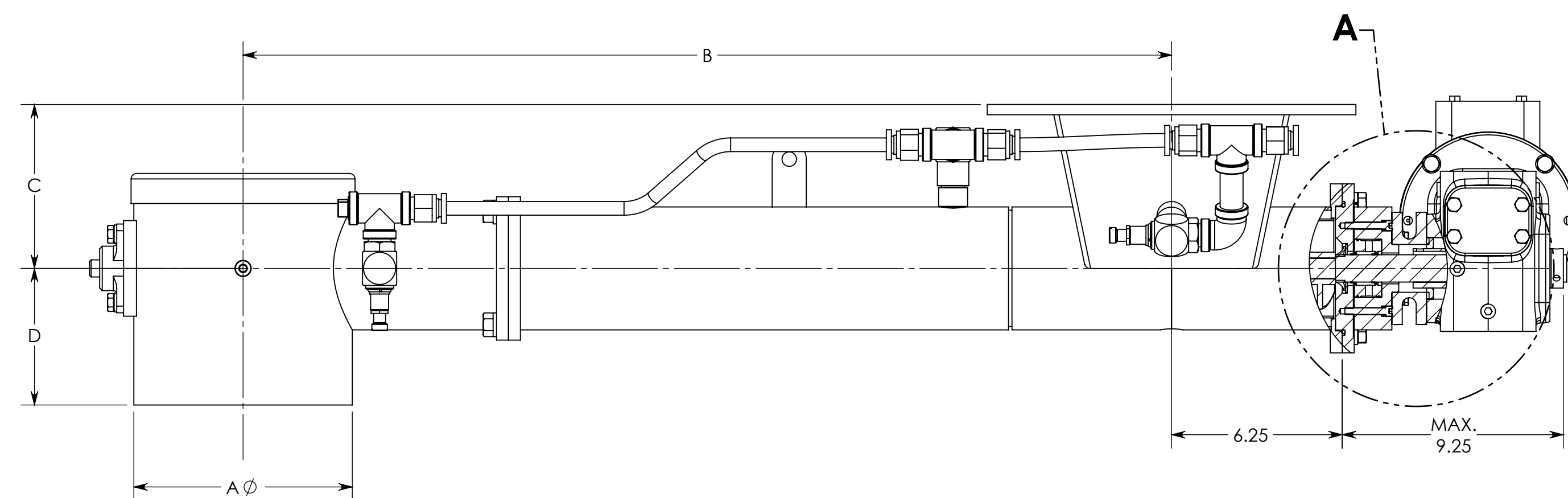
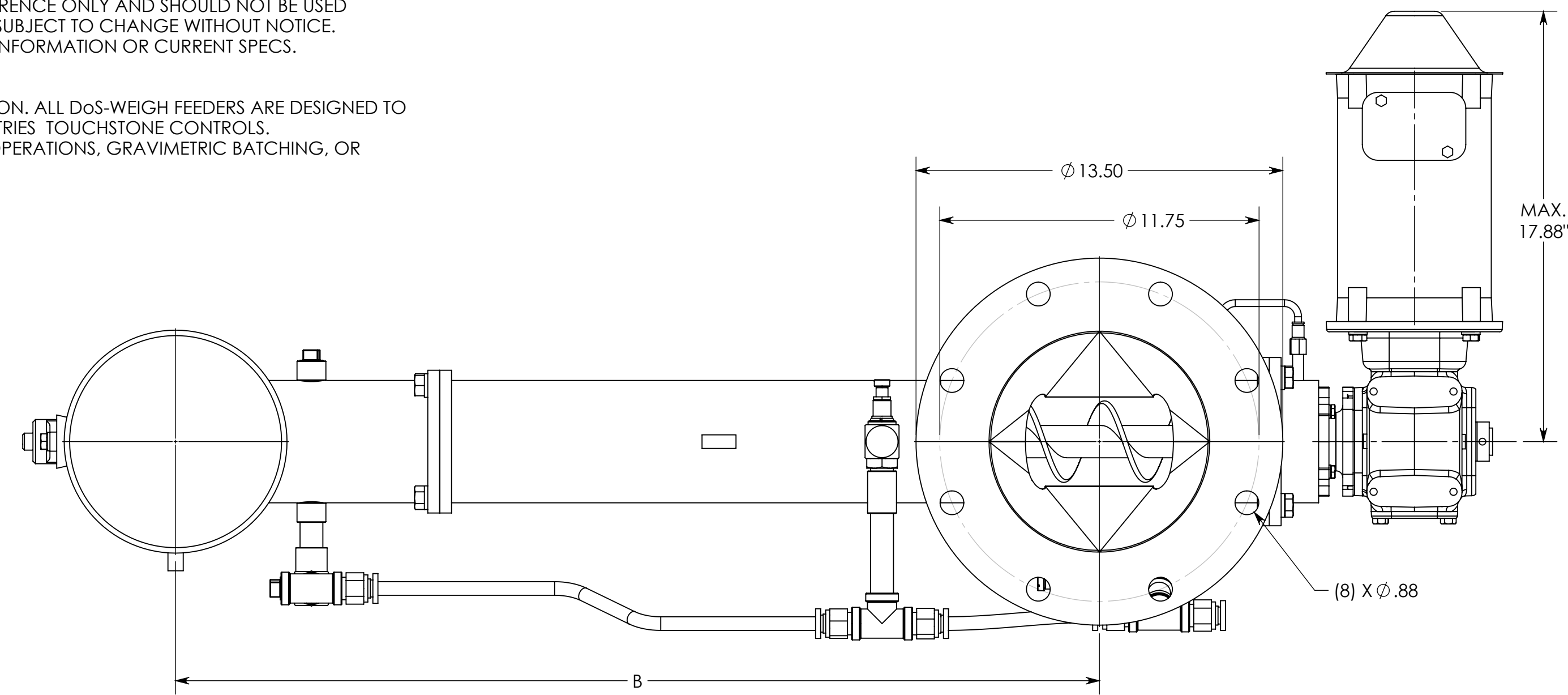
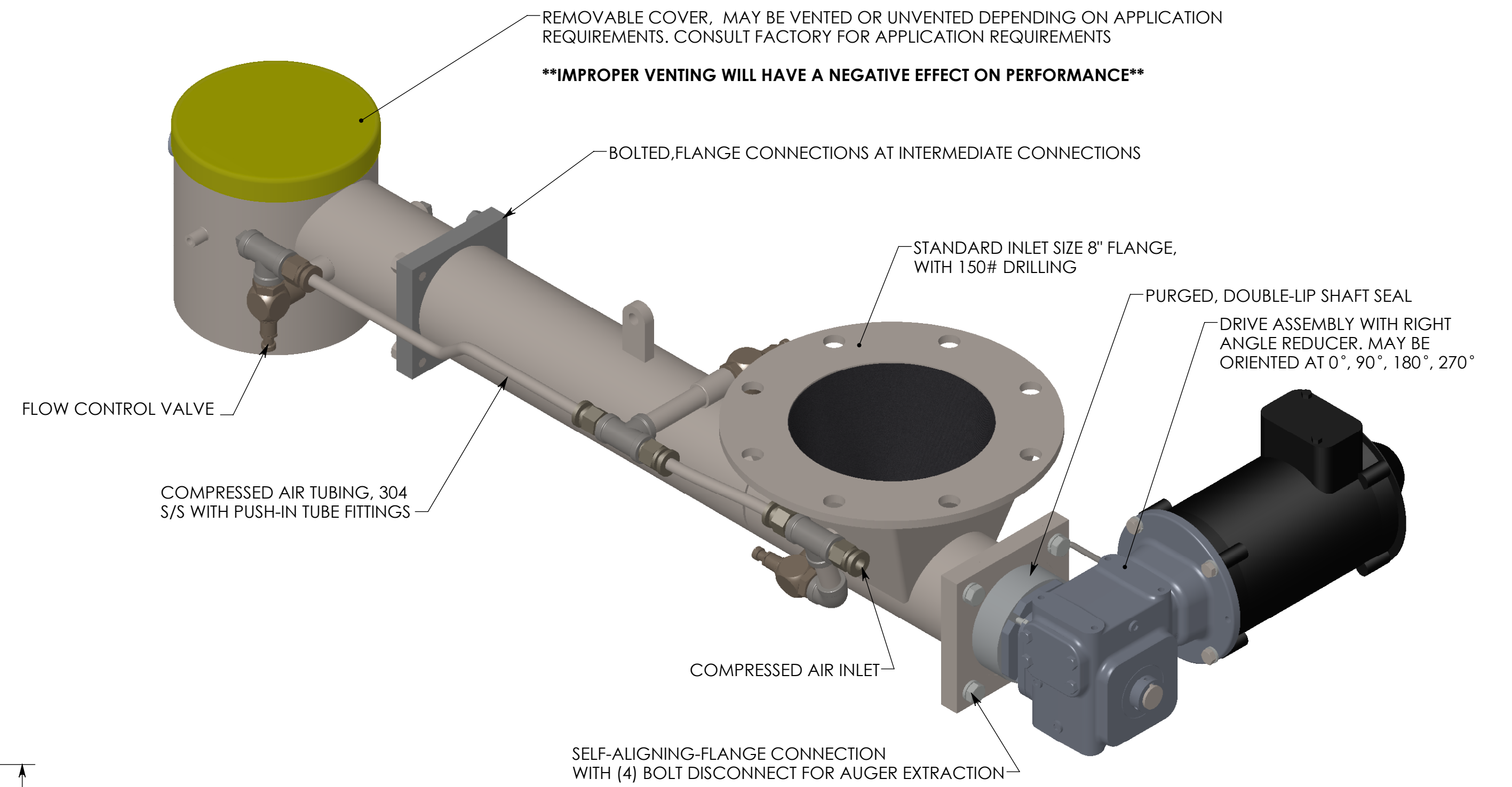
CUSTOM ORDERS

- CUSTOM DESIGNS WITH FEATURES AND DIMENSION OTHER THAN THOSE SPECIFIED ARE AVAILABLE. CONTACT YOUNG INDUSTRIES OR YOUR LOCAL YOUNG INDUSTRIES REPRESENTATIVE FOR MORE INFORMATION

* THIS DRAWING SHOULD BE USED FOR REFERENCE ONLY AND SHOULD NOT BE USED FOR BUILDING PURPOSES. ALL DETAILS ARE SUBJECT TO CHANGE WITHOUT NOTICE. CONTACT YOUNG INDUSTRIES FOR MORE INFORMATION OR CURRENT SPECS.

CONTROLS:

CONTROLS ARE DEPENDANT ON APPLICATION. ALL DoS-WEIGH FEEDERS ARE DESIGNED TO WORK WITH OUR FAMILY OF YOUNG INDUSTRIES TOUCHSTONE CONTROLS. CONFIGURATIONS INCLUDE VOLUMETRIC OPERATIONS, GRAVIMETRIC BATCHING, OR CONTINUOUS GRAVIMETRIC FEED



DETAIL A
 SCALE 1:2

FEEDER SIZE	CAPACITY AT 100% FULL (CU. FT./HR.)	A	B	C	D
1.00	.08 - 4.5	4.00	12.00 - 32.00	6.00	4.00
1.50	0.8 - 16	4.00	12.00 - 60.00	6.00	4.00
2.00	2 - 30	4.00	12.00 - 60.00	6.00	4.00
3.00	7 - 100	6.00	18.00 - 72.00	6.00	4.00
4.00	17 - 250	6.00	24.00 - 72.00	8.00	5.00
5.00	25 - 400	8.00	24.00 - 96.00	8.00	6.50
6.00	50 - 800	8.00	24.00 - 96.00	8.00	6.50

NOTE: CAPACITIES ABOVE REFLECT THEORETICAL CAPACITY AT 100% FILL. ACTUAL CAPACITY EXPECTED TO BE APPROXIMATELY 75% OF THEORETICAL CAPACITY

GENERAL TOLERANCES	
UNLESS OTHERWISE SPECIFIED THE FOLLOWING SHALL APPLY	
MACHINING - .XX= .02 .XXX= .005 ANGLE= .50°	
SURFACE ROUGHNESS HEIGHT 63 MICRONS OR LESS	
FABRICATION - UNDER 6 6 TO 24 24 TO 60 OVER 60	
± .06 ± .12 ± .19 ± .25	
UNLESS OTHERWISE SPECIFIED DIMENSIONS ARE IN INCHES	

REV. NO.	DESCRIPTION	DATE	BY
4	CHANGED CENTER COUPLING TO SAF CONNECTION	03/17/17	JAH
3	CHANGED DISCHARGE DIAMETER FROM PIPE SIZES TO TUBE SIZES TO ADAPT TO FLEXIBLE BELLOWS	03/17/17	JAH
2	ADDED 5" SIZE, REMV'D STD CONCENTRIC OPTION, ADJ. STD FEED RANGE, REMOVED BRG HOUSING	09/27/10	JAH

REVISIONS

CUSTOMER:
 CUSTOMER PO NUMBER:
 YOUNG JOB NUMBER:
 TITLE
 270, STD DWG, MODEL STS2 FEEDERS

THE YOUNG INDUSTRIES, INC.
 MUNCY, PENNSYLVANIA 17756
 TELEPHONE: 570-546-3165

DRAWN BY: JAH DATE DRAWN: 02/11/16
 CHECKED BY: JAH SCALE=1:4
 DRAWING NUMBER: D-20623-00 SHEET 1 OF 1 REV: 4