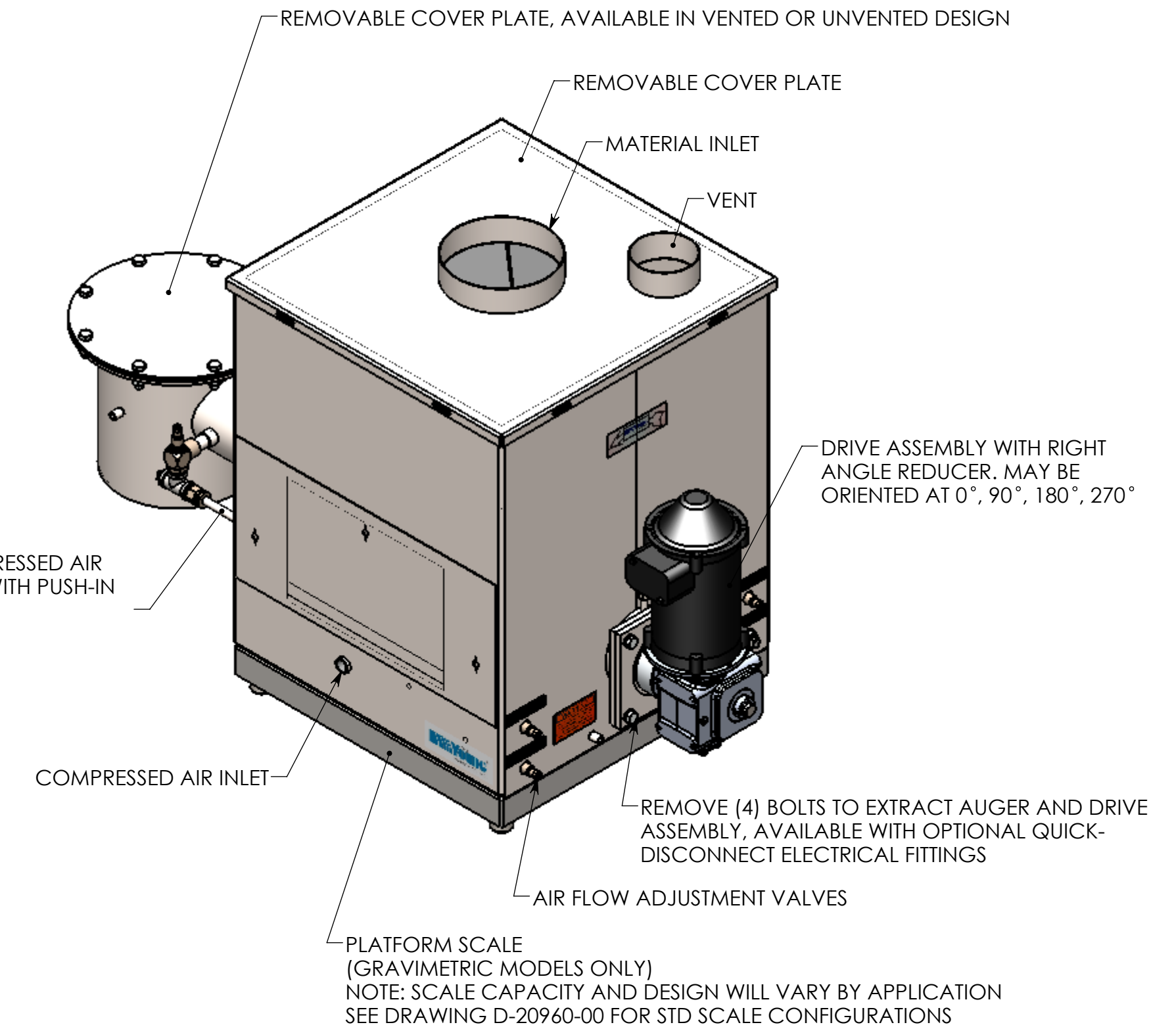
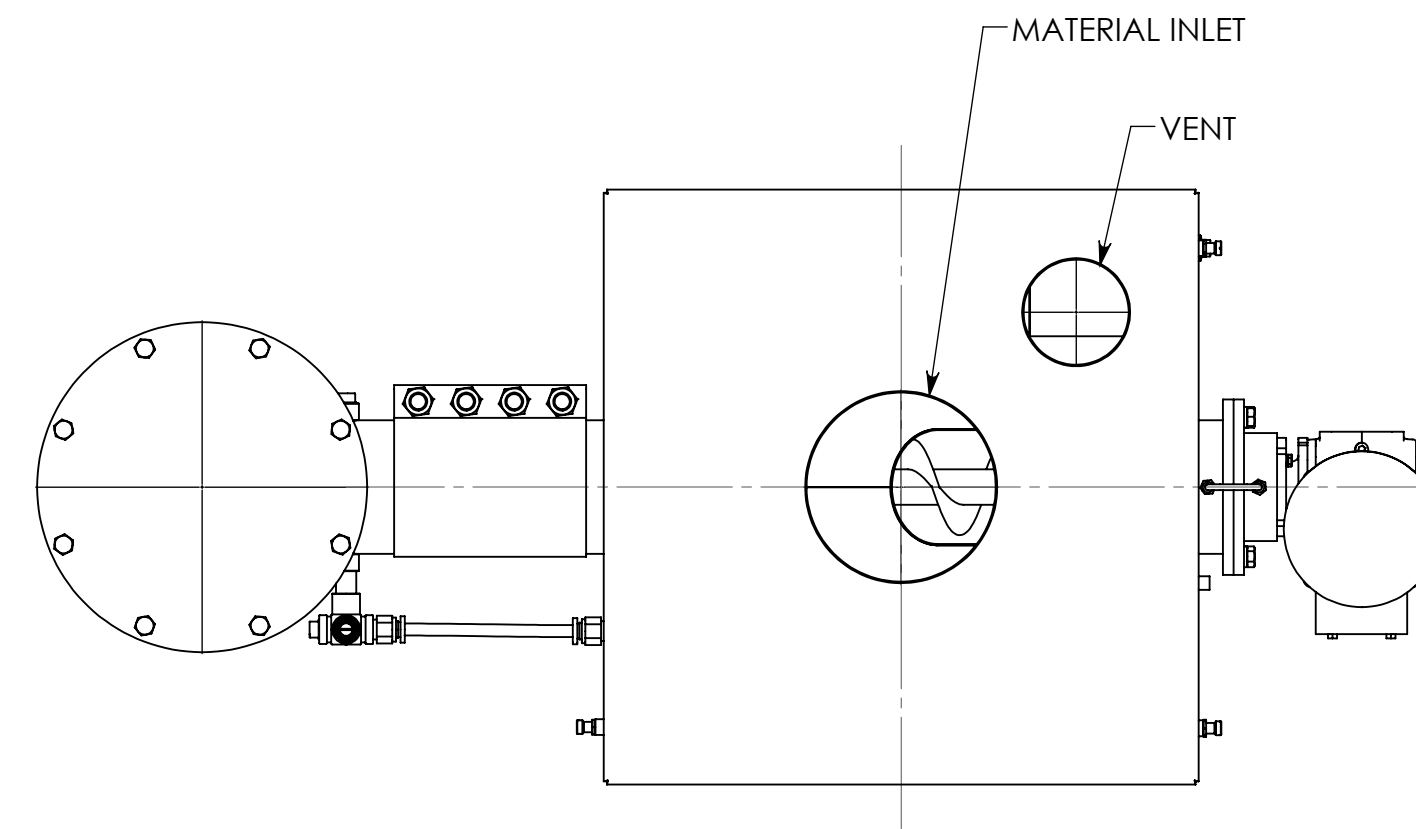
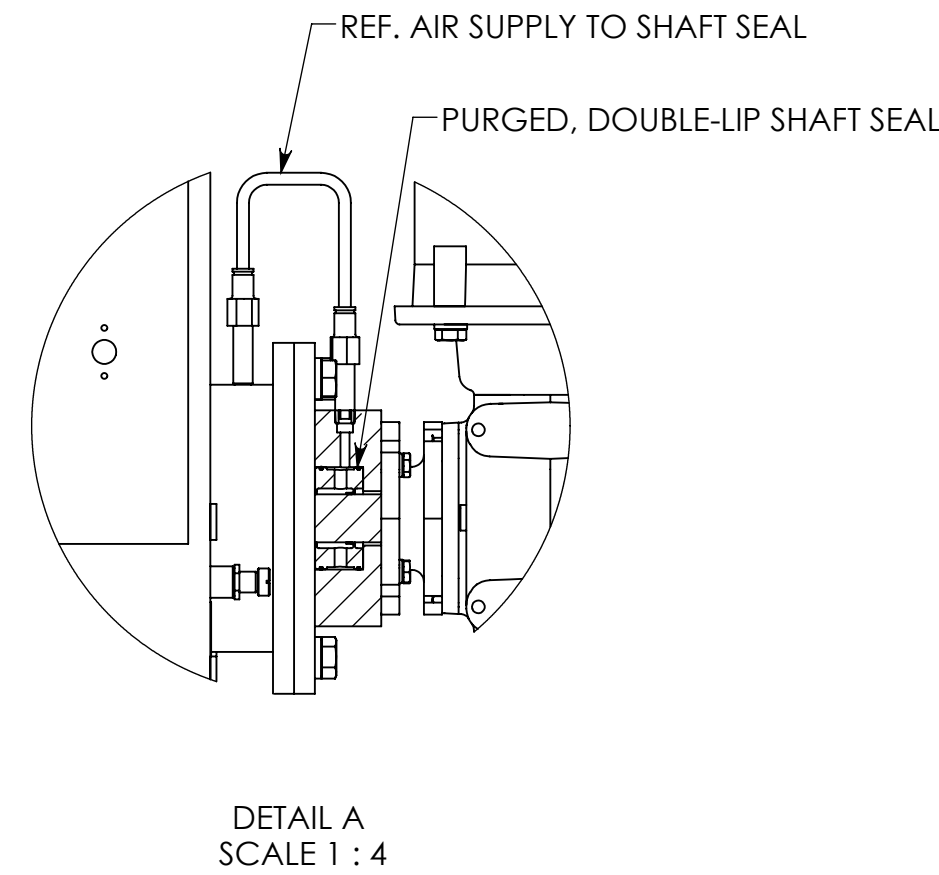


FEED AUGER DIAMETER	HOPPER SIZE (CUBIC FEET)	CAPACITY AT 100% FULL (CU. FT./HR.)	A	B	C (STD)	C (MAX)	D	E	F		
									MIN.	STANDARD	
1.00	.50	.08 - 4.5	12.00	16.00	12.00	32.00	8.00	20.00	2.00	4.00	4.50
	1.25		18.00	22.00	18.00		11.00	29.00	2.00	4.00	4.50
1.50	.50	.8 - 11	12.00	16.00	12.00	60.00	8.00	20.00	4.00	6.00	6.63
	1.25		18.00	22.00	18.00		11.00	27.00	4.00	6.00	6.63
2.00	1.25	2 - 30	18.00	22.00	18.00	60.00	11.00	27.00	4.00	6.00	6.63
	3.5		24.00	24.00	28.00		14.00	42.00	4.00	6.00	6.63
3.00	1.25	7 - 100	18.00	22.00	18.00	72.00	11.00	29.00	5.00	8.00	8.63
	3.5		24.00	24.00	28.00		14.00	42.00	5.00	8.00	8.63
	7		36.00	36.00	36.00		20.00	56.00	5.00	8.00	8.63
4.00	3.5	17 - 250	24.00	24.00	28.00	96.00	14.00	42.00	6.00	8.00	8.63
	7		36.00	36.00	36.00		20.00	56.00	6.00	8.00	8.63
6.00	3.5	50 - 800	24.00	24.00	28.00	96.00	14.00	42.00	8.00	10.00	10.75
	7		36.00	36.00	36.00		20.00	56.00	8.00	10.00	10.75

HOPPER EXTENSIONS AVAILABLE		
HOPPER SIZE (A DIMS.)	VOLUME (CU. FT.)	ADDED HEIGHT TO DIM. 'B'
12" SQUARE	1	12"
18" SQUARE	2.25	12"
18" SQUARE	4.5	24"
24" SQUARE	6	18"
24" SQUARE	12	36"
36" SQUARE	13	18"
36" SQUARE	27	36"



NOTES:

MATERIALS OF CONSTRUCTION:

HOUSING

- MATERIAL OF CONSTRUCTION PER ORDER REQUIREMENTS. AVAILABLE OPTIONS INCLUDE:
- OPTION 1: CARBON STEEL WHERE PRODUCT CONTACTS WITH 316 S/S FLUIDIZING MEDIA
- OPTION 2: 304 S/S WHERE PRODUCT CONTACTS WITH 316 S/S FLUIDIZING MEDIA
- OPTION 3: 316 S/S WHERE PRODUCT CONTACTS WITH 316 S/S FLUIDIZING MEDIA

AUGER

- MATERIAL OF CONSTRUCTION PER ORDER REQUIREMENTS. AVAILABLE OPTIONS INCLUDE:
- OPTION 1: HIGH DENSITY POLYETHYLENE FLIGHTING WITH STAINLESS STEEL HEX SHAFT
- OPTION 2: FABRICATED CARBON STEEL
- OPTION 3: FABRICATED STAINLESS STEEL

MOTOR/DRIVE (PER ORDER REQUIREMENTS)

- AVAILABLE OPTIONS INCLUDE:
- OPTION 1: 1/8 HP MOTOR, 90 VDC, TENV WITH RIGHT-ANGLE REDUCER
- OPTION 2: 1/4 HP MOTOR, 3 PH 230V, TENV WITH RIGHT-ANGLE REDUCER
- OPTION 3: 1/2 HP MOTOR, 3 PH 230V, TENV WITH RIGHT-ANGLE REDUCER
- OPTION 4: CUSTOM MOTOR AND/OR REDUCER, PER ORDER

NOTES:

- * STANDARD REDUCER CAST ALUMINUM CONSTRUCTION
- * OPTIONAL UPGRADE TO CAST S/S CONSTRUCTION
- * EXPLOSION PROOF AND WASHDOWN DUTY MOTORS ARE ALSO AVAILABLE

FEEDING APPLICATIONS:

- VOLUMETRIC FEEDING
- GRAVIMETRIC BATCH FEEDING (WHEN INSTALLED IN STS-2 FEEDER PACKAGE)
- GRAVIMETRIC CONTINUOUS FEEDING (WHEN INSTALLED IN STS-2 FEEDER PACKAGE)

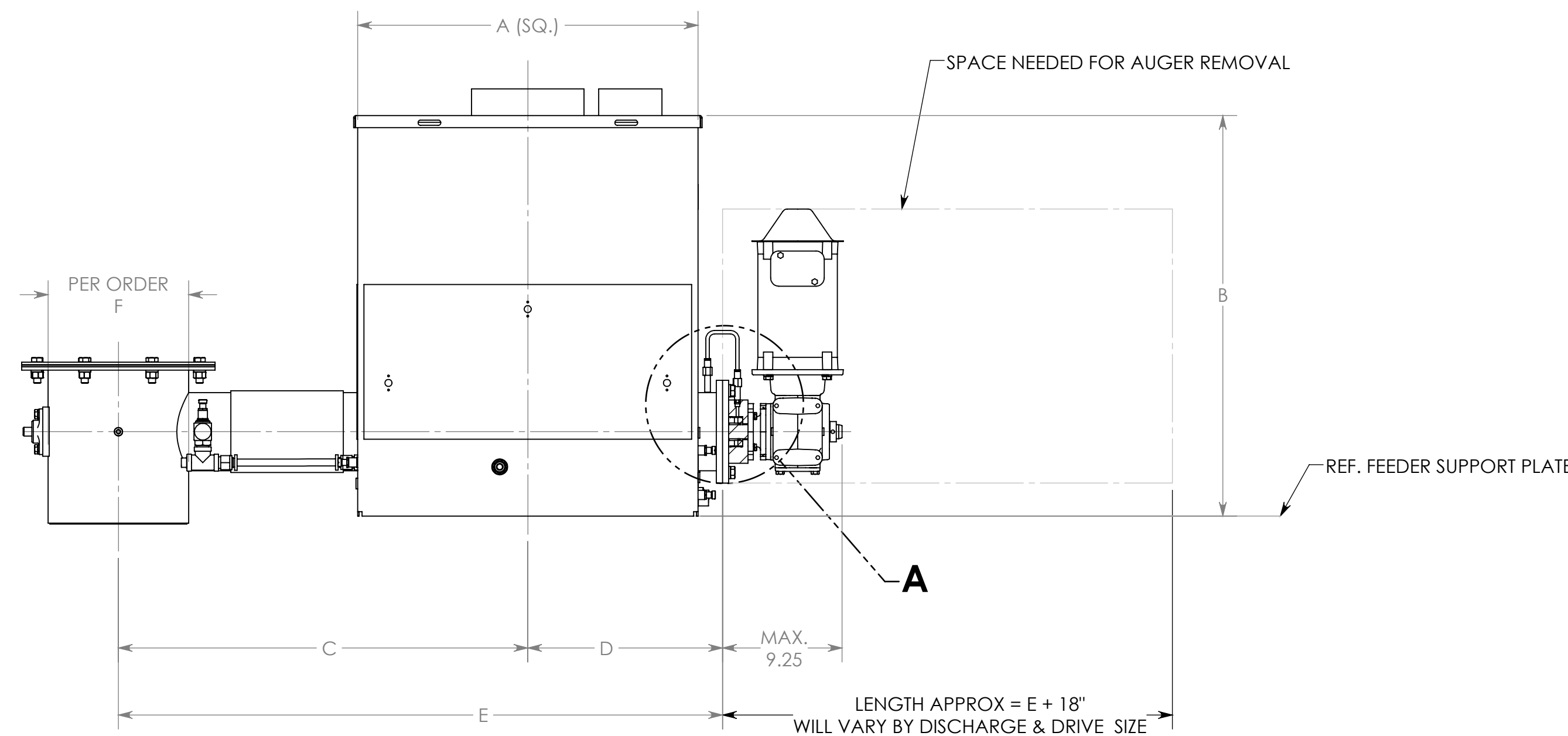
CUSTOM ORDERS

CUSTOM DESIGNS WITH FEATURES AND DIMENSION OTHER THAN THOSE SPECIFIED ARE AVAILABLE. CONTACT YOUNG INDUSTRIES OR YOUR LOCAL YOUNG INDUSTRIES REPRESENTATIVE FOR MORE INFORMATION

* THIS DRAWING SHOULD BE USED FOR REFERENCE ONLY AND SHOULD NOT BE USED FOR BUILDING PURPOSES. ALL DETAILS ARE SUBJECT TO CHANGE WITHOUT NOTICE. CONTACT YOUNG INDUSTRIES FOR MORE INFORMATION OR CURRENT SPECS.

CONTROLS:

CONTROLS ARE DEPENDANT ON APPLICATION. ALL YOUNG INDUSTRIES FEEDERS ARE DESIGNED TO WORK WITH OUR FAMILY OF YOUNG INDUSTRIES TOUCHSTONE CONTROLS. CONFIGURATIONS INCLUDE VOLUMETRIC OPERATIONS, GRAVIMETRIC BATCHING, OR CONTINUOUS GRAVIMETRIC FEED



REV. NO.	DESCRIPTION	DATE	BY
3	REVISED FEEDER TUBE LENGTH OPTIONS AND MOVED TO VAULT. ADDED COLOR TO ISO VIEW	04/25/16	JAH
2	ADDED 1.00" AUGER SIZE AND 12" SQ. HOPPER SIZE. ADJUSTED DIMENSIONS & HOPPER CAPACITIES. REMOVED CONCRETE STD. DRIVE OPTION. REVISED NOTES. REMOVED BEARING HOUSING & REPLACED WITH HOLLOW SHAFT REDUCER	09/27/13	JAH
1	ADJUSTED MOTOR OPTIONS AND DIMENSION 'C' ON ALL MODELS. ADDED NOTE FOR HOPPER EXTENSIONS	04/19/10	JAH

REVISIONS			
CUSTOMER			
CUST. NO.			
YOUNG ORDER NO.			
TITLE ASSY: MODEL 1 STINGER SCREW FEEDER - STANDARD CONFIGURATIONS			

THE YOUNG INDUSTRIES, INC.
MUNICIPALITY, PENNSYLVANIA 17756
TELEPHONE: 570-546-3165

DRAWN BY: JAH	DATE DRAWN: 04/25/16
CHECKED BY: *	SCALE: 1:8
DRAWING NUMBER: D-20623-01	REV: 3

GENERAL TOLERANCES	
UNLESS OTHERWISE SPECIFIED THE FOLLOWING SHALL APPLY	
MACHINING - .XX= .02 .XXX= .005 ANGLE= .50°	
SURFACE ROUGHNESS HEIGHT 63 MICRONS OR LESS	
FABRICATION - UNDER 6 6 TO 24 24 TO 60 OVER 60	
± .06 ± .12 ± .19 ± .25	
UNLESS OTHERWISE SPECIFIED DIMENSIONS ARE IN INCHES	