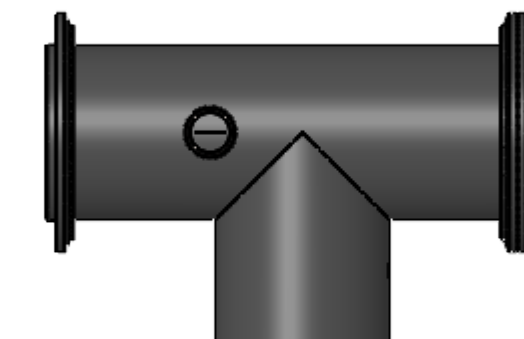
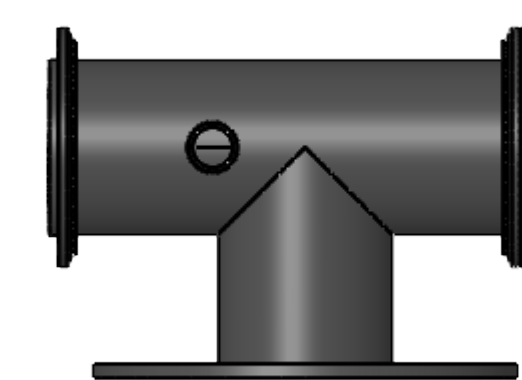


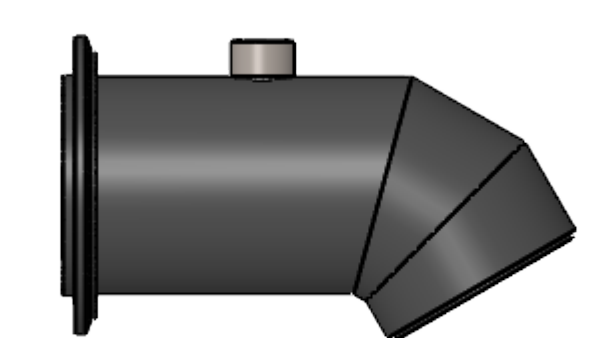
STINGER @ DISCHARGE OPTION # 2
STRAIGHT DISCHARGE END
& SELF-ALIGNING FLANGE CONNECTION
(SEE NOTE NO. 3)



STINGER @ DISCHARGE OPTION # 3
90 DEGREE DISCHARGE W/ CLEAN-OUT PORT,
SELF-ALIGNING FLANGE CONNECTION, PLAIN
END DISCHARGE
(SEE NOTE NO. 3)



STINGER @ DISCHARGE OPTION # 4
90 DEGREE DISCHARGE W/ CLEAN-OUT PORT,
SELF-ALIGNING FLANGE CONNECTION,
FLANGED DISCHARGE



STINGER @ DISCHARGE OPTION # 5
45 OR 60 DEGREE ELBOW, W/
SELF-ALIGNING FLANGE CONNECTION
(SEE NOTE NO. 3)

NOTES:

1. STINGER HOUSINGS ARE FABRICATED OF CARBON STEEL OR STAINLESS STEEL.
2. AVERAGE PLANT AIR OR GAS REQUIRES 80 PSIG.
3. STINGER DISCHARGE CAN BE SUPPLIED WITH FLANGED CONNECTION HAVING 150# ANSI DRILLING OR PLAIN END. CUSTOMER SPECIFIED.

SIZE	A	B	C	D	E	F	G
1.25	12.75	16.44	18.12	3.50	19.00	22.00	3.00
3	21.00	24.00	22.25	3.50	25.50	22.00	3.00

GENERAL TOLERANCES UNLESS OTHERWISE SPECIFIED THE FOLLOWING SHALL APPLY	
MACHINING - .XX# .02 .XXX# .005 ANGLES .50°	
SURFACE ROUGHNESS HEIGHT .63 MICRONS OR LESS	
FABRICATION - UNDER 4 6 TO 24 24 TO 40 OVER 40	
± .06 ± .12 ± .19 ± .25	
UNLESS OTHERWISE SPECIFIED DIMENSIONS ARE IN INCHES. UNLESS SPECIFIED DIMENSIONS & TOLERANCES INTERPRETED PER ASME Y14.5-2009	
3RD	

REV. NO.	DESCRIPTION	DATE	BY
REVISIONS			
CUSTOMER:			
CUSTOMER PO NUMBER:			
YOUNG JOB NUMBER:			
TITLE			
ASSEMBLY: STINGER PRESSURE PUMP, SIZE X-X, FLANGED INLET, SAF CONVEY LINE CONNECTION			
DRAWN BY: SMR		DATE: 03/07/19	
CHECKED BY:		SCALE=1:8	
DRAWING NUMBER	D-21118-16	SHEET 1 OF 1	REV: 00