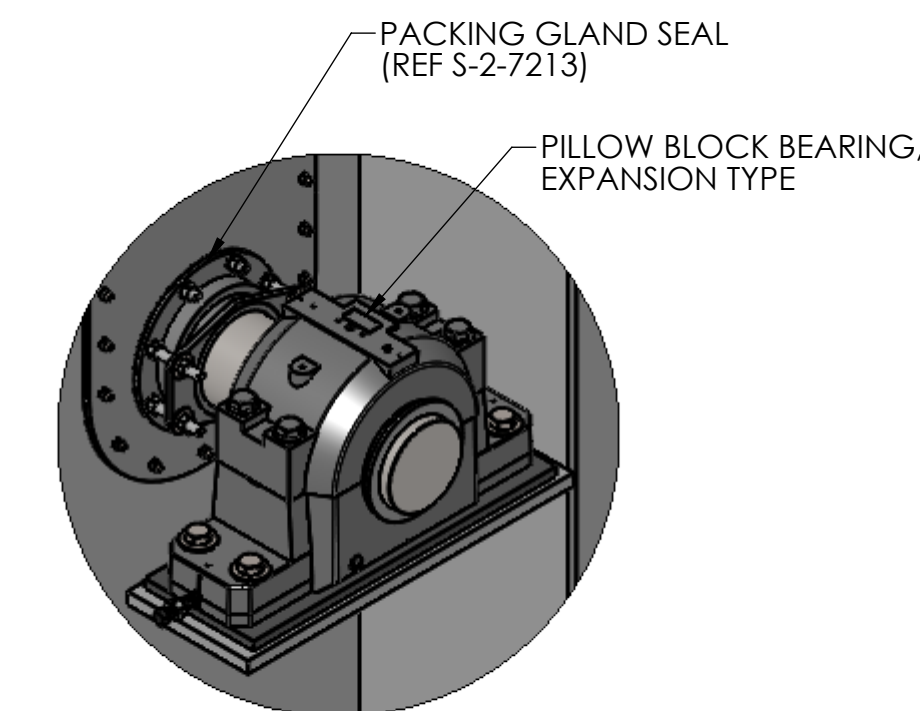
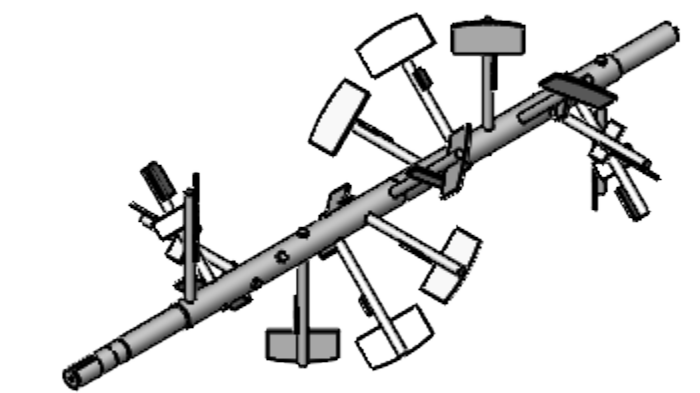
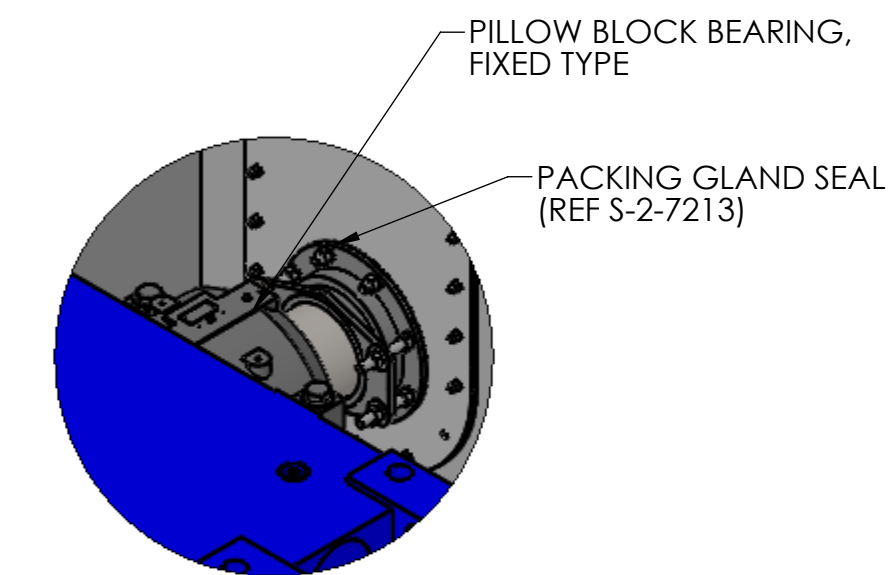
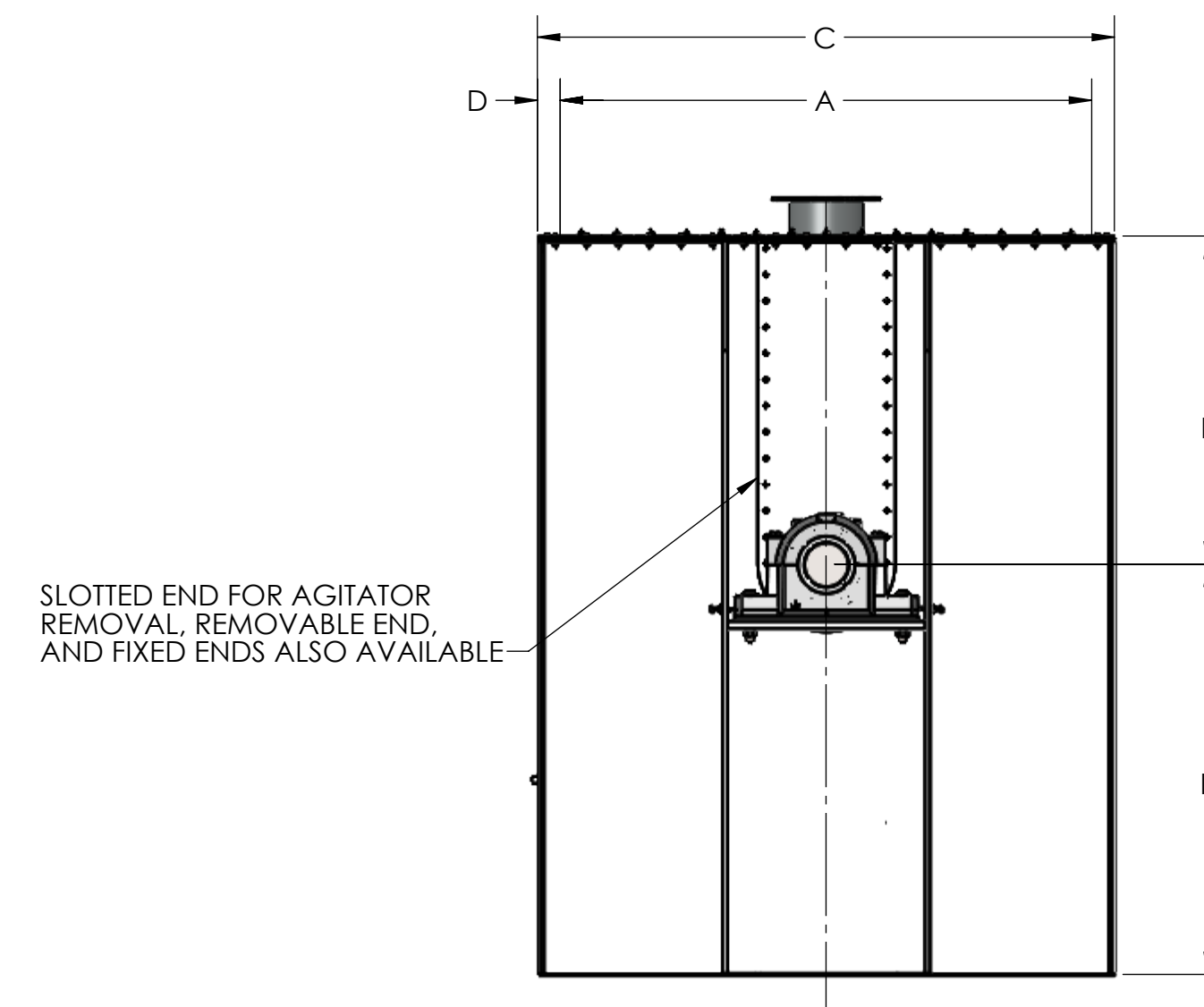
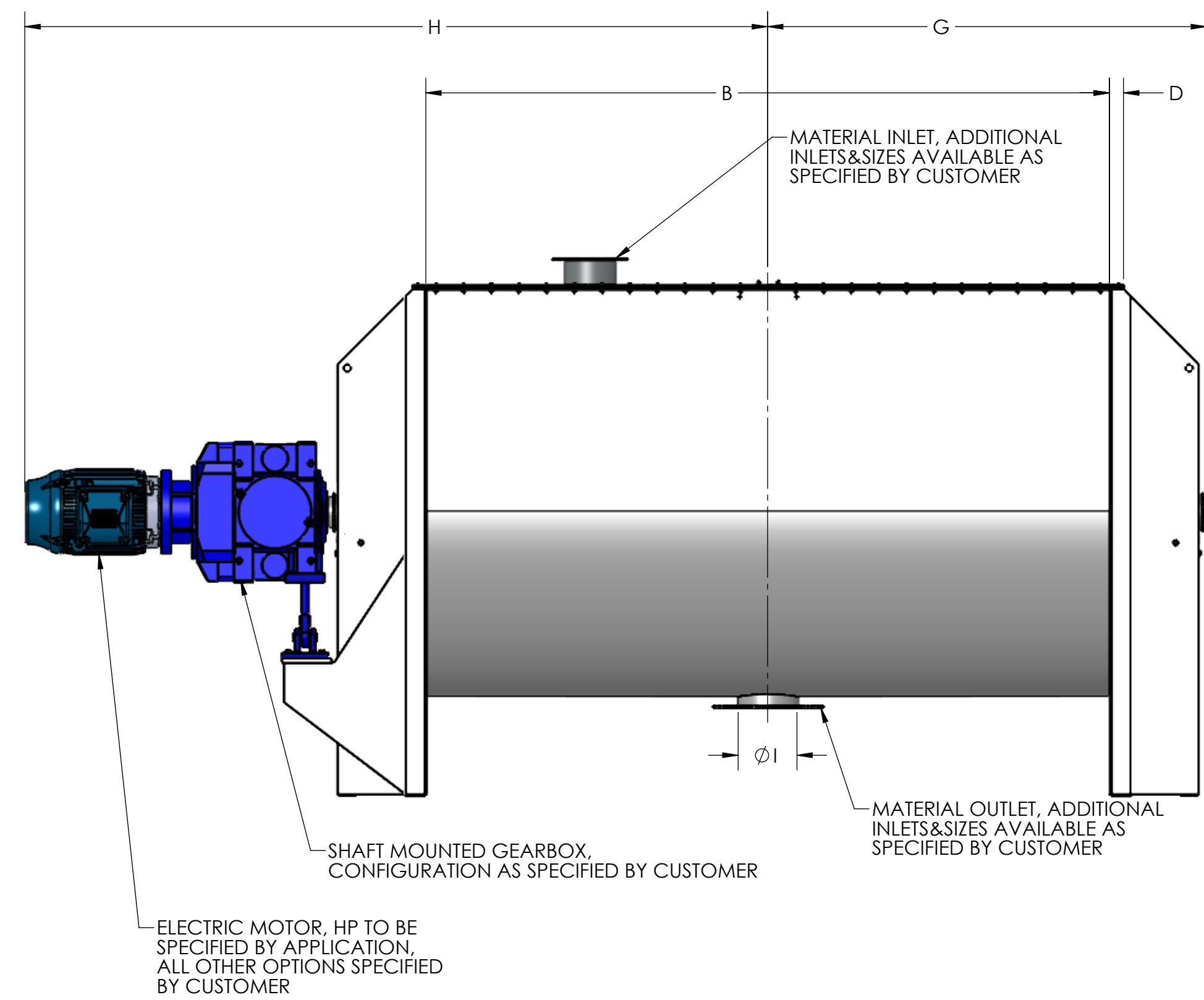
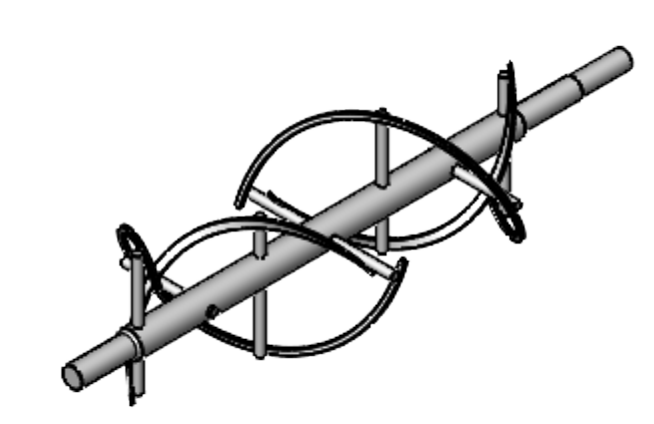
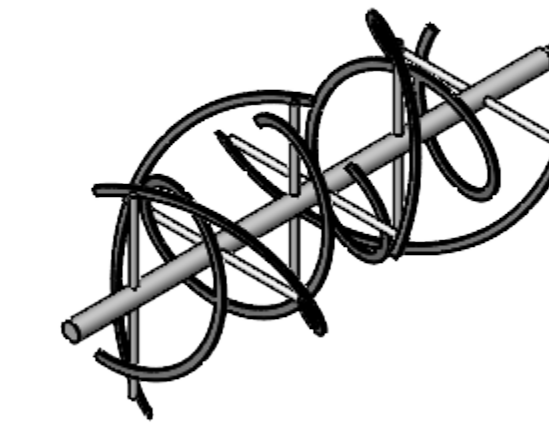
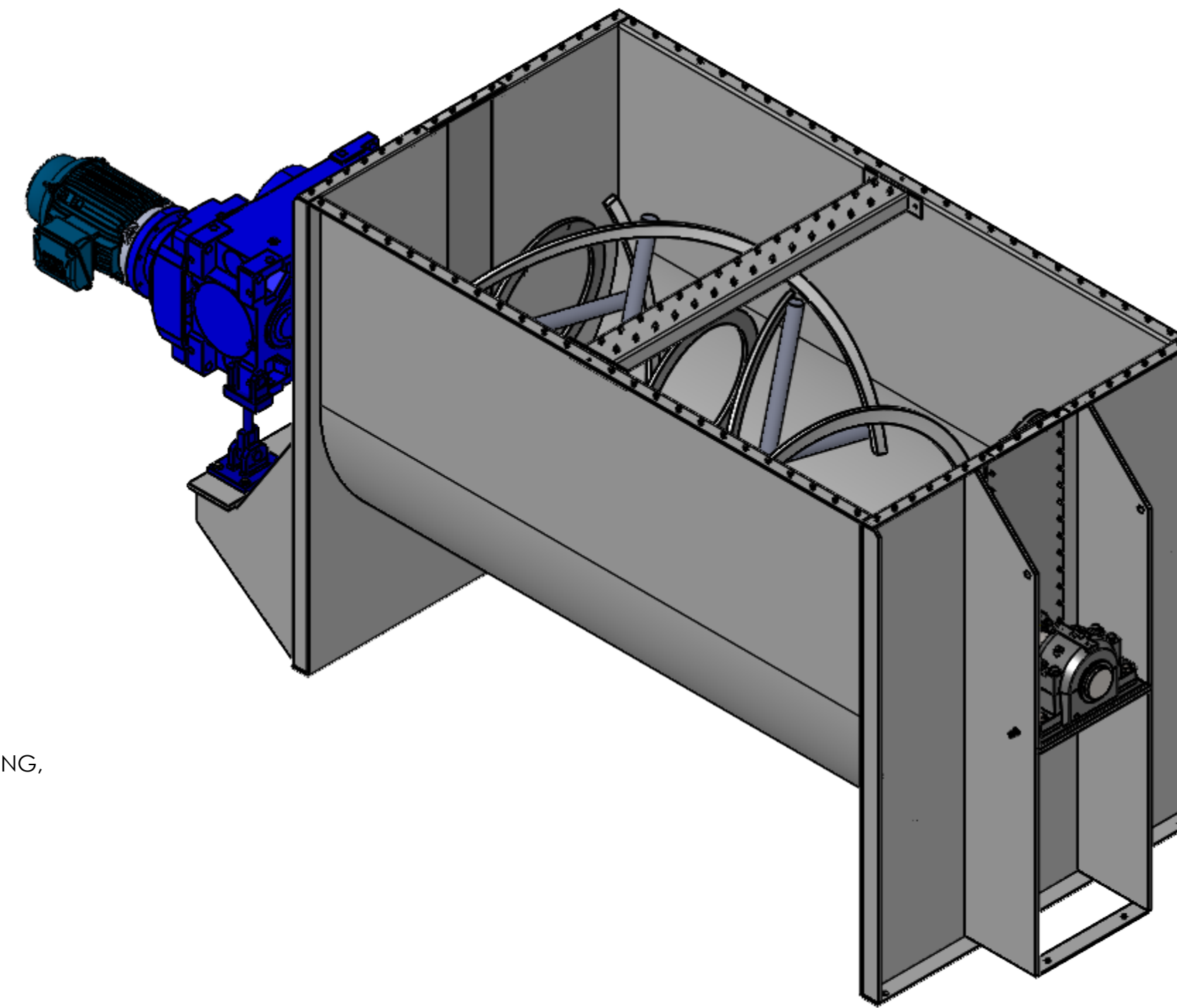
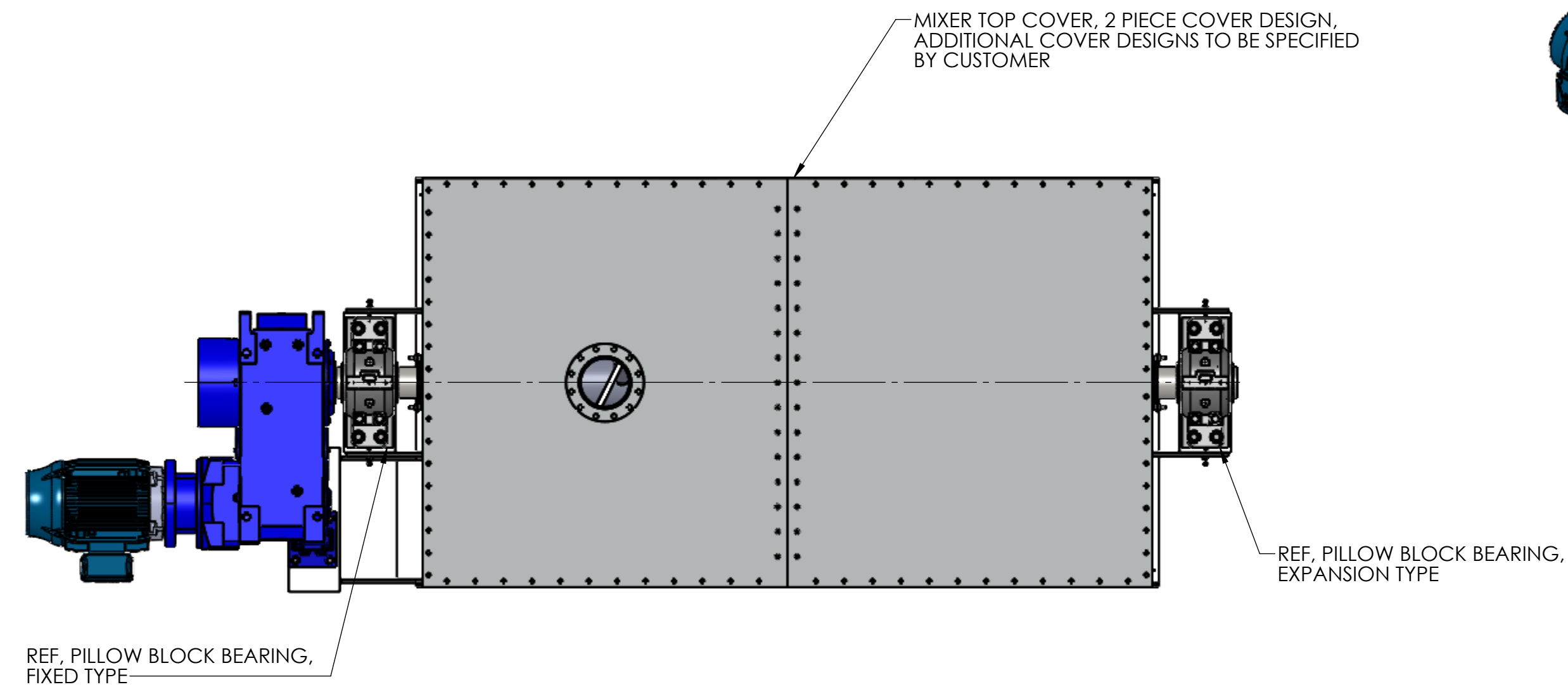


- NOTES:
1. HORIZONTAL MIXER BODIES ARE AVAILABLE IN CARBON STEEL OR STAINLESS STEEL. OTHER MATERIALS MAY BE AVAILABLE UPON REQUEST. JACKETS MAY BE ADDED FOR HEATING AND COOLING OF PRODUCT.
  2. ONE (1) STANDARD DOUBLE RIBBON, MULTIPITCH OR PADDLE AGITATOR.
  3. GASKET MATERIAL: NEOPRENE, RTV, OR CUSTOMER SPECIFIED.
  4. MATERIAL FINISH:  
C/S PLATE/SHEET FINISH - HOT ROLLED  
S/S SHEET FINISH - NO. 2B  
S/S PLATE FINISH - H.R.A.P.
  5. DESIGN/OPERATING TEMPERATURE: AMBIENT
  6. PAINT SPECIFICATION: YOUNG INDUSTRIES STANDARD 082-500 Y.I. BLUE EPOXY OR CUSTOMER SPECIFIED PAINT. STAINLESS STEEL IS NOT PAINTED.
  7. SHORT AND LONG MIXER BODIES AVAILABLE



MIXER SIZE CU. FT.	*STD HP	A	B	C	D	E	F	G	H	I	STD AGITATOR R.P.M	SHIPPING WEIGHT (LBS) LESS DRIVE
200	30	60	120	66	3	37	36	81	72.5	10	20	5,785
250	40	66	126	72	3	40	40	86.75	78.25	10	18	7,025
300	40	72	132	78	3	43	43	89.75	81.25	10	17	8,265
350	50	72	150	78	3	43	43	101.25	92.25	10	17	9,735
400	60	78	144	84	3	46	47	100.5	89.25	10	16	10,360
450	60	78	162	84	3	46	47	109.5	98.25	10	16	11,840
500	75	84	156	90	3	49	50	107.5	69.25	12	14	13,445
550	75	84	174	92	4	49	50	116.5	105.25	12	14	14,785
600	100	90	162	98	4	52	54	113.75	102	12	13	16,080
650	100	90	180	98	4	52	54	122.75	111	12	13	17,635

\*BASED ON 45LB/CUFT OF MATERIAL

GENERAL TOLERANCES			
UNLESS OTHERWISE SPECIFIED THE FOLLOWING SHALL APPLY			
MACHINING	- .XX" - .02	.XXX" - .005	ANGLES - 30°
SURFACE ROUGHNESS HEIGHT 63 MICRONS INCHES OR LESS			
FABRICATION	- UNDER 6"	6 TO 24"	24 TO 60"
	± .06	± .12	± .19
UNLESS OTHERWISE SPECIFIED DIMENSIONS ARE IN INCHES. UNLESS SPECIFIED DIMENSIONS & TOLERANCES INTERPRETED PER ASME Y14.5-2009.			

REV. NO.	DESCRIPTION	DATE	BY
REVISIONS			
CUSTOMER:			
CUSTOMER PO NUMBER:			
YOUNG JOB NUMBER:			
TITLE			
YOUNG INDUSTRIES 200 THRU 600 CUFT HB MIXERS STANDARD DIMENSION SHEET			

**THE YOUNG INDUSTRIES, INC.**  
MUNCY, PENNSYLVANIA 17756  
TELEPHONE: 570-546-3165

DRAWN BY: SLB      DATE: 07/02/24  
CHECKED BY:      SCALE=1:25

DRAWINGS NUMBER: **D-21404-02**      SHEET 1 OF 1      REV: 00