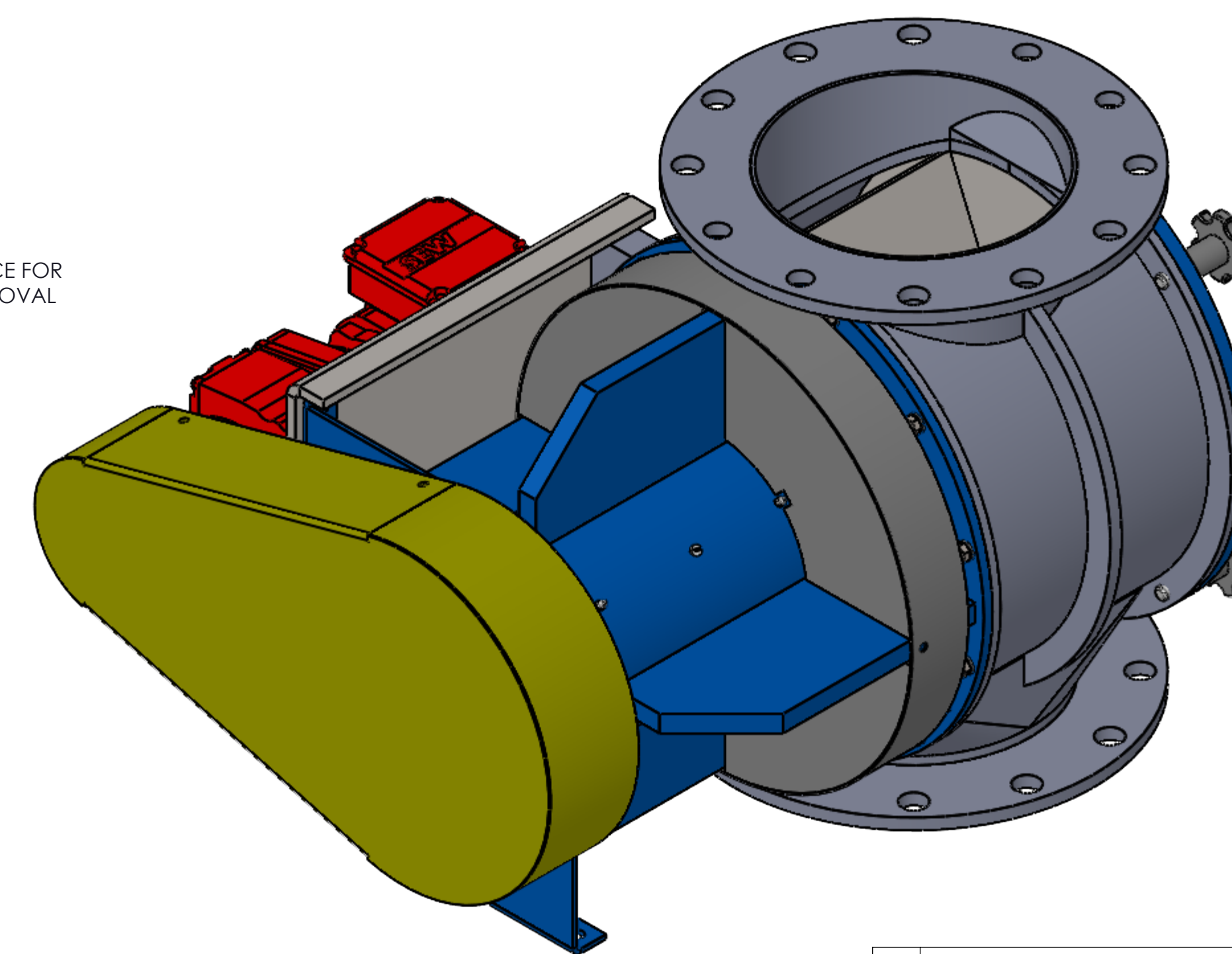
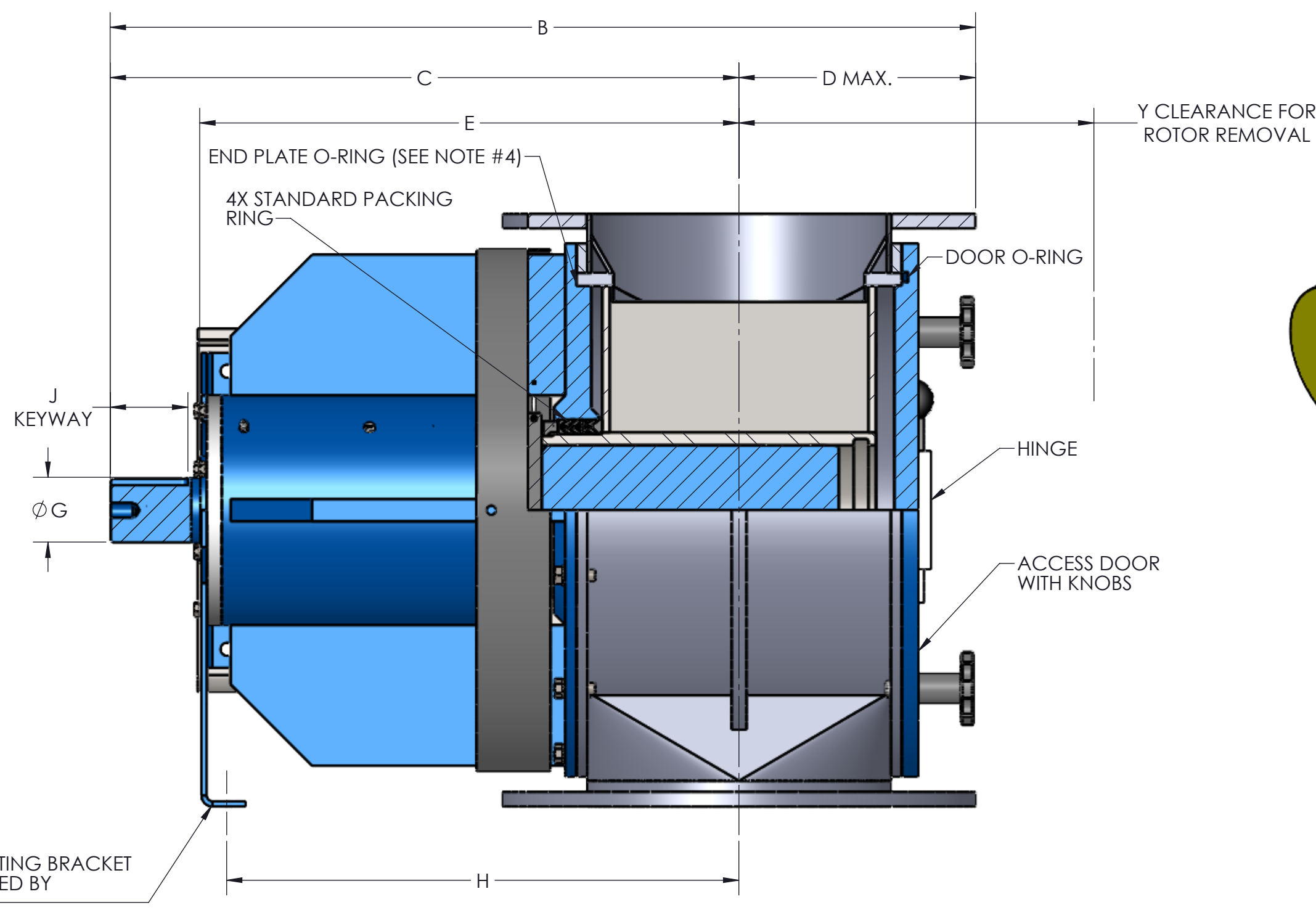
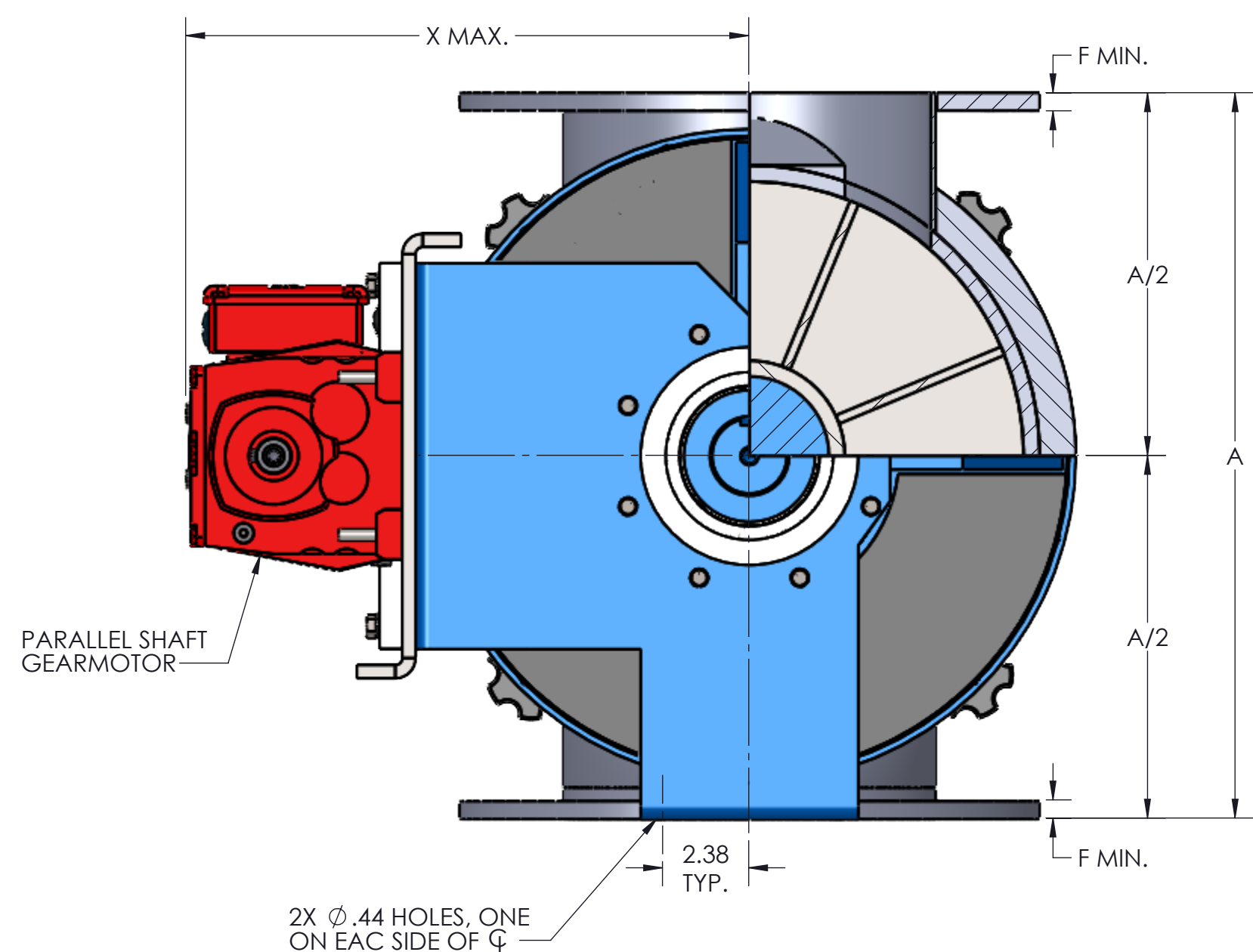


ROTOR SIZES: 4" - 12" - 8 VANES
14" - 24" - 12 VANES

TOTALLY ENCLOSED OSHA DESIGNED CHAIN GUARD
TOTALLY ENCLOSED CHAIN DRIVE INCLUDES:
VALVE SPROCKET
DRIVE SPROCKET
ROLLER CHAIN



SIZE	ROTOR DIA. X LG.	ROTOR CAPACITY (CU. FT. PER REV.)				STD RPM	VENT SIZE	STD HP	A	B	C	D	E	F	G	H	J	K	L	M	N	P	Q	R	S	T	U	V	W	X	Y	WEIGHT (C/S)	ROTOR WEIGHT
		AS	BS	CS	DS																												
4	6 X 3.50	.0374	.0274	.0129	.0343	38	1.25	.50	10.00	20.82	16.32	4.50	13.29	.31	1.19	12.38	.25 X .12 X 2.62	9.00	7.50	4.00	(8) .75	N/A	7.50	4.00	.62	4.38	3.12	(6) .56	(2) .50-13UNC-2B	12.70	14	255	20
5	8 X 4.50	.0930	.0642	.0440	.0890	38	1.50	.50	12.00	23.07	18.07	5.00	15.04	.44	1.44	14.00	.38 X .19 X 2.62	10.00	8.50	5.00	(4) .88	(4) .75-10UNC-2B	8.50	5.00	.62	4.88	3.62	(6) .56	(2) .50-13UNC-2B	13.70	16	300	25
6	10 X 5.50	.189	.124	.0795	.184	32	1.50	.50	14.00	24.75	19.25	5.50	16.22	.44	1.94	15.19	.50 X .25 X 2.62	11.00	9.50	6.00	(4) .88	(4) .75-10UNC-2B	9.50	6.00	.62	5.25	4.12	(6) .56	(2) .50-13UNC-2B	12.88	18	325	30
8	12 X 7.25	.361	.214	.115	.356	32	2.00	.75	17.00	26.68	19.93	6.75	16.90	.44	1.94	15.82	.50 X .25 X 2.62	13.50	11.75	8.00	(4) .88	(4) .75-10UNC-2B	11.50	8.00	.62	6.38	2.56	(14) .56	(2) .50-13UNC-2B	13.88	21.63	455	40
10	15 X 9.25	.745	.507	.154	.738	32	2.50	.75	20.00	29.25	21.25	8.00	18.22	.44	2.19	17.31	.50 X .25 X 2.62	16.00	14.25	10.00	(8) 1.00	(4) .88-9UNC-2B	14.75	10.00	1.00	7.38	3.19	(14) .56	(2) .50-13UNC-2B	15.52	25.63	585	75
12	17 X 11.25	1.182	.670	.259	1.172	32	2.50	.75	22.00	32.38	22.88	9.50	19.10	.56	2.44	18.06	.62 X .31 X 3.38	19.00	17.00	12.00	(8) 1.00	(4) .88-9UNC-2B	16.75	12.00	1.00	8.38	3.69	(14) .56	(2) .50-13UNC-2B	16.51	29.63	860	120
14	19 X 12.25	1.578	.940	.438	1.563	32	3.00	.75	24.00	35.38	24.88	10.50	21.09	.56	2.44	20.06	.62 X .31 X 3.38	21.00	18.75	13.00	(8) 1.12	(4) 1.00-8UNC-2B	18.00	13.00	1.00	9.00	4.00	(14) .56	(2) .50-13UNC-2B	17.51	31.63	1210	160

- NOTES:
1. VALVE HOUSINGS ARE CAST OF IRON, STEEL OR STAINLESS STEEL; OR FABRICATED OF STEEL OR STAINLESS STEEL. ALL ROTORS ARE FABRICATED OF STEEL OR STAINLESS STEEL.
 2. VALVE HOUSINGS ARE AVAILABLE WITH ANY COMBINATION OF SQUARE OR ROUND INLET AND OUTLET. USE ROUND OUTLET WITH ANY FREE FLOWING MATERIAL. ROUND FLANGES MATCH 150# ANSI DRILLING.
 3. VALVES ARE DESIGNED FOR 15 PSIG @ INTERNAL PRESSURE AND 5 PSI (MAX) DIFFERENTIAL PRESSURE @ 250 DEGREES F.
 4. END PLATE O-RING IS OPTIONAL AND WILL BE FURNISHED ONLY WHEN SPECIFIED. DOOR O-RING IS STANDARD.
 5. AIR PURGE CONNECTION IS OPTIONAL AND WILL BE FURNISHED ONLY WHEN SPECIFIED.

REV. NO.	DESCRIPTION	DATE	BY
REVISIONS			
CUSTOMER:			
CUSTOMER PO NUMBER:			
YOUNG JOB NUMBER:			
TITLE			
YOUNG INDUSTRIES MODEL 'CA-HC' ROTARY VALVE, SIZE 4"-14", CLASS 15 W/ PARALLEL SHAFT DRIVE. STANDARD DIMENSION SHEET			

GENERAL TOLERANCES UNLESS OTHERWISE SPECIFIED THE FOLLOWING SHALL APPLY

MACHINING - XX± .02 XXX± .005 ANGLES - 30° SURFACE ROUGHNESS HEIGHT .63 MICRONS OR LESS

FABRICATION - UNDER 6 6 TO 24 24 TO 60 OVER 60 ± .06 ± .12 ± .19 ± .25

UNLESS OTHERWISE SPECIFIED DIMENSIONS ARE IN INCHES. UNLESS SPECIFIED DIMENSIONS & TOLERANCES INTERPRETED PER ASME Y14.5-2009

3RD

DRAWN BY: MEA DATE: 07/31/24

CHECKED BY: SCALE: 1:4

DRAWING NUMBER: D-21404-22 SHEET 1 OF 1 REV: 00

YOUNG INDUSTRIES
MUNCY, PENNSYLVANIA 17756
TELEPHONE: 570-546-3165