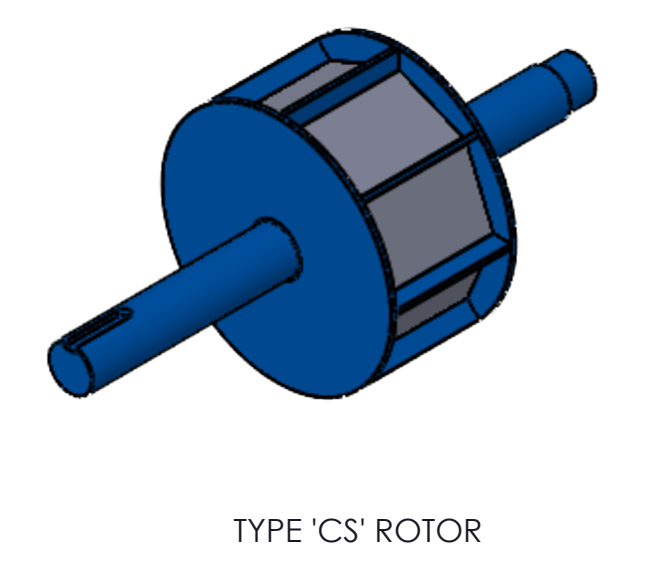
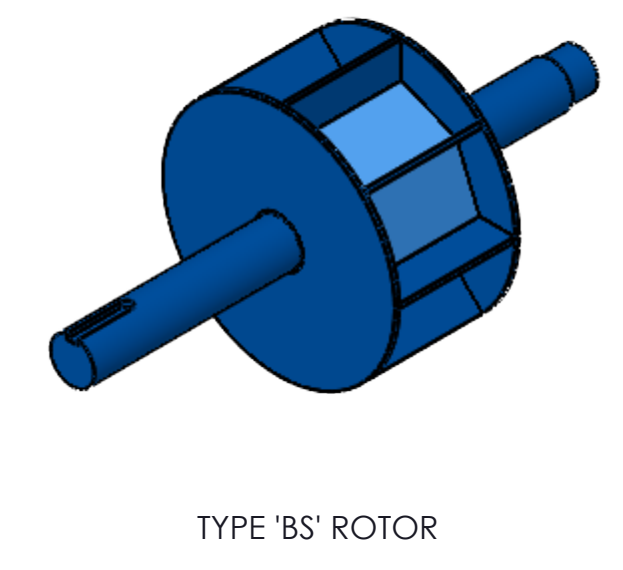
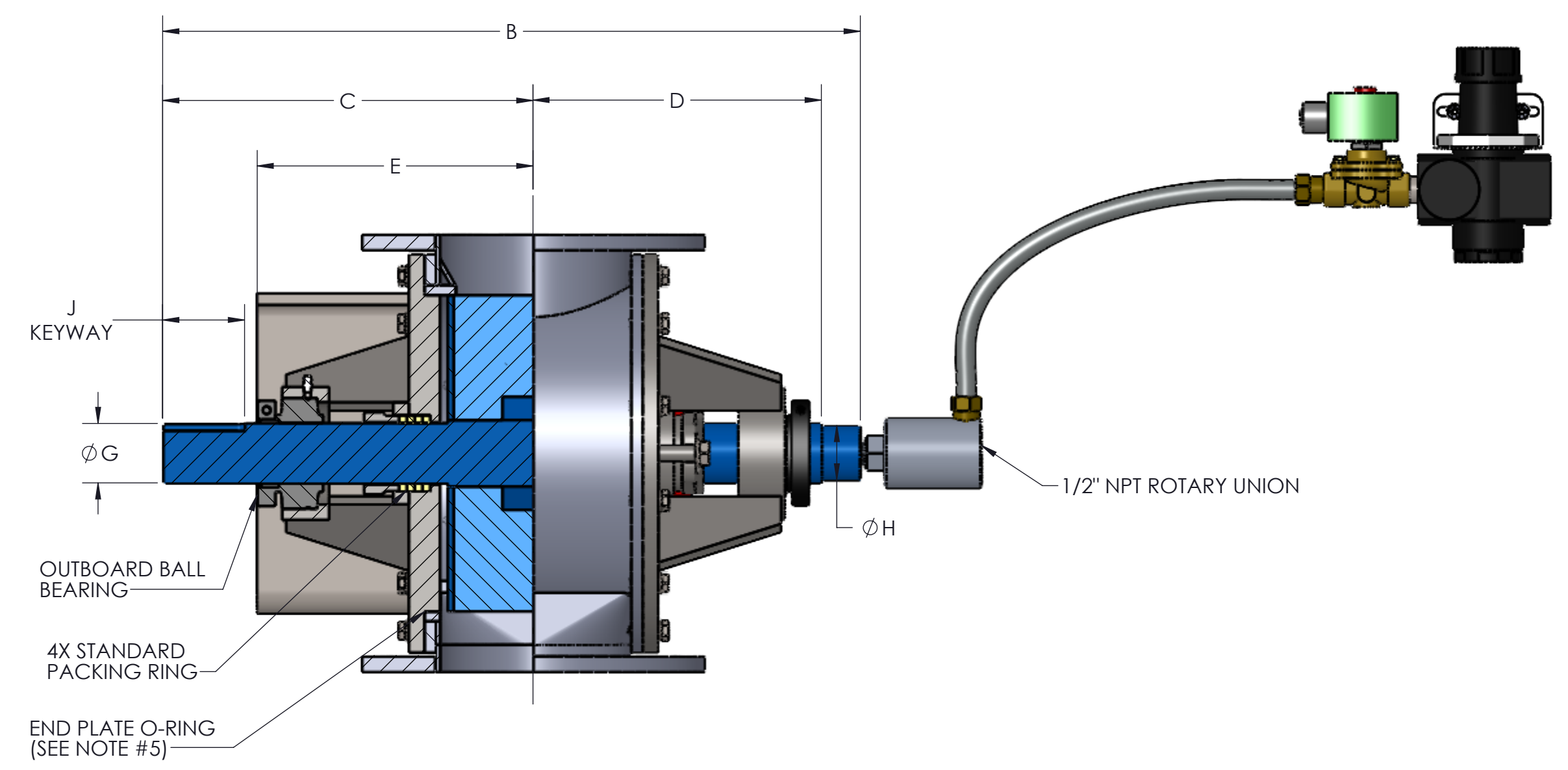
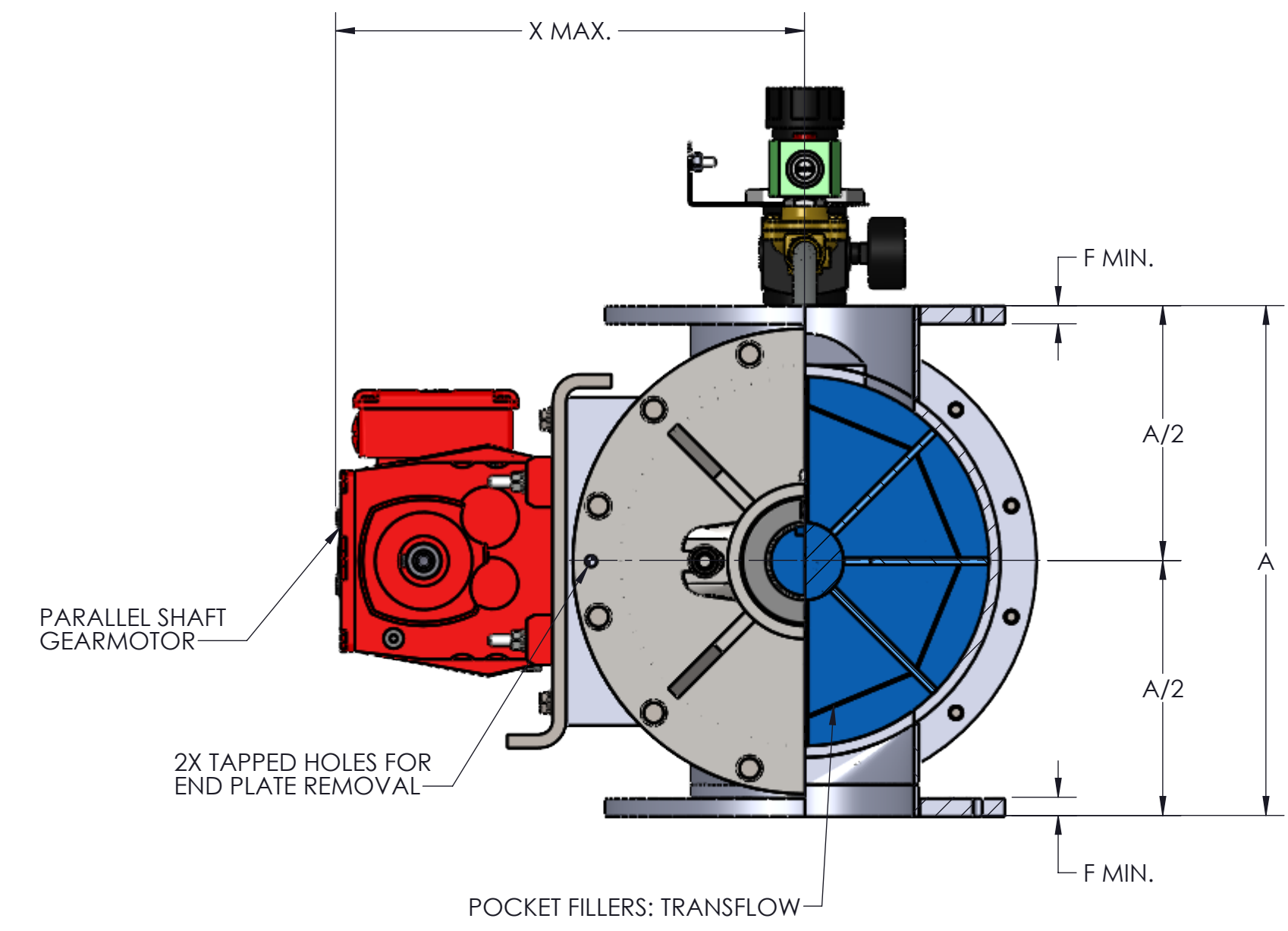
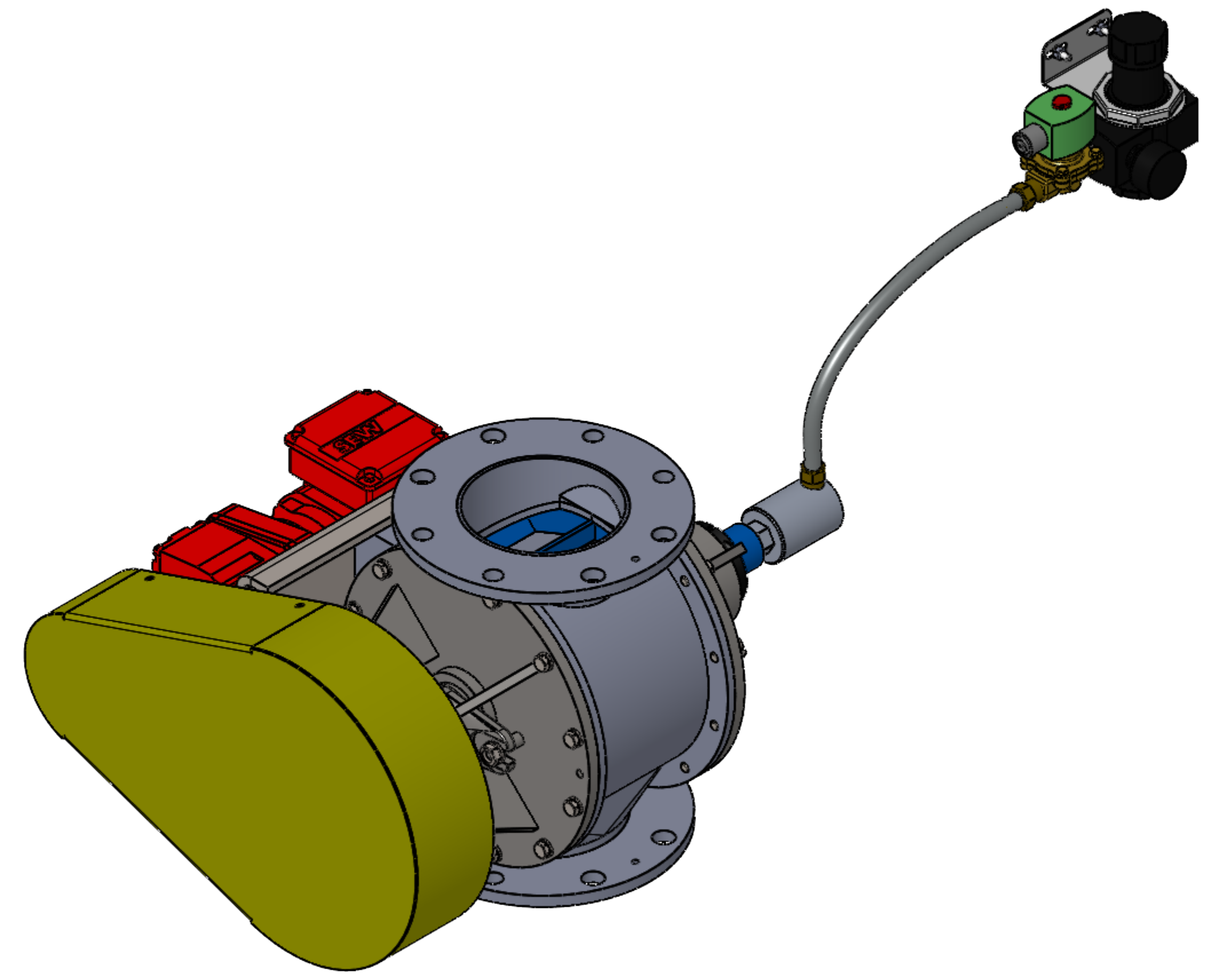


- NOTES:
1. VALVE HOUSINGS ARE CAST OF IRON, ALUMINUM, STEEL OR STAINLESS STEEL; FABRICATED OF STEEL OR STAINLESS STEEL. ALL ROTORS ARE FABRICATED OF STEEL OR STAINLESS STEEL.
 2. VALVE HOUSINGS ARE AVAILABLE WITH EITHER A SQUARE OR ROUND INLET AND OUTLET. ROUND FLANGES MATCH 150# ANSI DRILLING.
 3. STANDARD HOUSINGS ARE DESIGNED FOR 15 PSI (MAX) INTERNAL & DIFFERENTIAL @ 250 DEGREES F.
 4. INSPECTION DOOR IS OPTIONAL AND WILL BE FURNISHED ONLY WHEN SPECIFIED.
 5. END PLATES AND INSPECTION DOOR O-RINGS ARE OPTIONAL AND WILL BE FURNISHED ONLY WHEN SPECIFIED.
 6. AIR PURGE CONNECTIONS WITH BRASS LANTERN RINGS ARE OPTIONAL AND WILL BE FURNISHED ONLY WHEN SPECIFIED.
 7. VENT WITH SCH 10 PIPE IS OPTIONAL AND WILL BE FURNISHED ONLY WHEN SPECIFIED. VENT CONNECTION WILL CHANGE ROTOR ROTATION TO COUNTER-CLOCKWISE



SIZE	ROTOR DIA. X LG.	ROTOR CAPACITY (CU. FT. PER REV.)		STD RPM	VENT SIZE	STD HP	A	B	C	D	E	F	G	H	J	K	L	M	N	P	Q	R	S	T	U	V	W	X	WEIGHT C/S
		BS	CS																										
4	6 X 4	.0274	.0129	38	1.25	.50	10.00	19.25	10.31	7.69	7.31	.31	1.19	1.00	.25 X .12 X 2.62	9.00	7.50	4.00	(8) .75	N/A	7.50	4.00	.62	3.12	N/A	(6) .56	(2) .50-13UNC-2B	13.31	205
5	8 X 5	.0642	.0440	38	1.50	.50	12.00	20.50	10.94	8.31	7.94	.44	1.44	1.25	.38 X .19 X 2.62	10.00	8.50	5.00	(4) .88	(4) .75-10UNC-2B	8.50	5.00	.62	3.62	N/A	(6) .56	(2) .50-13UNC-2B	14.31	260
6	10 X 6	.124	.0795	32	1.50	.50	14.00	22.38	11.88	9.25	8.88	.44	1.94	1.75	.50 X .25 X 2.62	11.00	9.50	6.00	(4) .88	(4) .75-10UNC-2B	9.50	6.00	.62	4.12	N/A	(6) .56	(2) .50-13UNC-2B	15.38	310
8	12 X 8	.214	.115	32	2.00	.75	17.00	24.38	12.88	10.25	9.88	.44	1.94	1.75	.50 X .25 X 2.62	13.50	11.75	8.00	(4) .88	(4) .75-10UNC-2B	11.50	8.00	.62	5.12	2.56	(14) .56	(2) .50-13UNC-2B	16.38	385
10	15 X 10	.507	.154	32	2.50	.75	20.00	26.62	13.88	11.25	10.88	.44	2.19	2.00	.50 X .25 X 2.62	16.00	14.25	10.00	(8) 1.00	(4) .88-9UNC-2B	14.75	10.00	1.00	6.38	3.19	(14) .56	(2) .50-13UNC-2B	18.00	520
12	17 X 12	.670	.259	32	2.50	.75	22.00	29.75	15.81	12.44	12.06	.56	2.44	2.25	.62 X .31 X 3.38	19.00	17.00	12.00	(8) 1.00	(4) .88-9UNC-2B	16.75	12.00	1.00	7.38	3.69	(14) .56	(2) .50-13UNC-2B	19.00	660
14	19 X 13	.940	.438	32	3.00	.75	24.00	30.75	16.31	12.94	12.56	.56	2.44	2.25	.62 X .31 X 3.38	21.00	18.75	13.00	(8) 1.12	(4) 1.00-8UNC-2B	18.00	13.00	1.00	8.00	4.00	(14) .56	(2) .50-13UNC-2B	19.94	885
16	23 X 15	1.518	.701	30	3.50	1.5	28.00	34.62	18.31	14.81	14.44	.62	2.94	2.75	.75 X .38 X 3.50	23.50	21.25	15.00	(12) 1.12	(4) 1.00-8UNC-2B	20.00	15.00	1.00	9.00	4.50	(14) .69	(2) .62-11UNC-2B	23.00	1260
18	25 X 17	2.062	.937	28	3.50	1.5	30.00	36.62	19.31	15.81	15.44	.62	2.94	2.75	.75 X .38 X 3.50	25.00	22.75	17.00	(12) 1.25	(4) 1.12-7UNC-2B	22.00	17.00	1.00	10.00	5.00	(14) .69	(2) .62-11UNC-2B	24.06	1510
20	28 X 19	2.909	1.369	28	4.00	2.0	36.00	41.38	22.38	17.50	17.12	.75	3.19	3.25	.75 X .38 X 3.50	27.50	25.00	19.00	(16) 1.25	(4) 1.12-7UNC-2B	25.50	19.00	1.25	11.50	5.75	(14) .81	(2) .75-10UNC-2B	26.62	2200
22	32 X 21	4.343	2.047	26	5.00	2.0	40.00	45.75	24.81	19.44	19.06	.75	3.69	3.75	.88 X .44 X 5.00	29.75	27.25	21.00	(16) 1.38	(4) 1.25-7UNC-2B	27.50	21.00	1.25	12.50	6.25	(14) .81	(2) .75-10UNC-2B	28.62	2730
24	34 X 23	5.434	2.519	24	5.00	2.0	42.00	47.75	25.81	20.44	20.06	.75	3.75	3.75	.88 X .44 X 5.00	32.00	29.50	23.00	(16) 1.38	(4) 1.25-7UNC-2B	29.50	23.00	1.25	13.50	6.75	(14) .81	(2) .75-10UNC-2B	29.62	3000

REV. NO.	DESCRIPTION	DATE	BY
REVISIONS			
CUSTOMER:			
CUSTOMER PO NUMBER:			
YOUNG JOB NUMBER:			
TITLE			
YOUNG INDUSTRIES MODEL 'EV-HC' ROTARY VALVE, SIZE 4"-24", CLASS 15 W/ PARALLEL SHAFT DRIVE. CLOSED ROTOR, STANDARD DIMENSION SHEET			
DRAWN BY: MEA		DATE: 08/07/24	
CHECKED BY:		SCALE=1:4	
DRAWING NUMBER		SHEET	
D-21404-27		1 OF 1	
		REV: 00	

GENERAL TOLERANCES UNLESS OTHERWISE SPECIFIED THE FOLLOWING SHALL APPLY

MACHINING - XX# .02 XXX# .005 ANGLES .50° SURFACE ROUGHNESS HEIGHT 63 MICRONS OR LESS

FABRICATION - UNDER 6 6 TO 24 24 TO 60 OVER 60 ±.06 ±.12 ±.19 ±.25

UNLESS OTHERWISE SPECIFIED DIMENSIONS ARE IN INCHES. UNLESS SPECIFIED DIMENSIONS & TOLERANCES INTERPRETED PER ASME Y14.5-2009

3RD