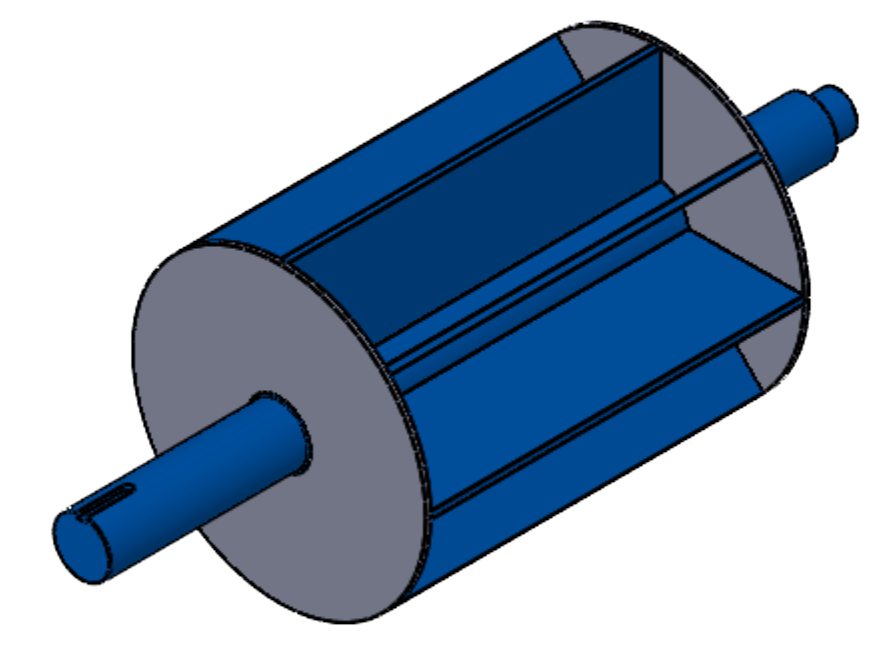


TOTALLY ENCLOSED OSHA DESIGNED CHAIN GUARD
TOTALLY ENCLOSED CHAIN DRIVE INCLUDES:
DRIVE SPROCKET
VALVE SPROCKET
ROLLER CHAIN

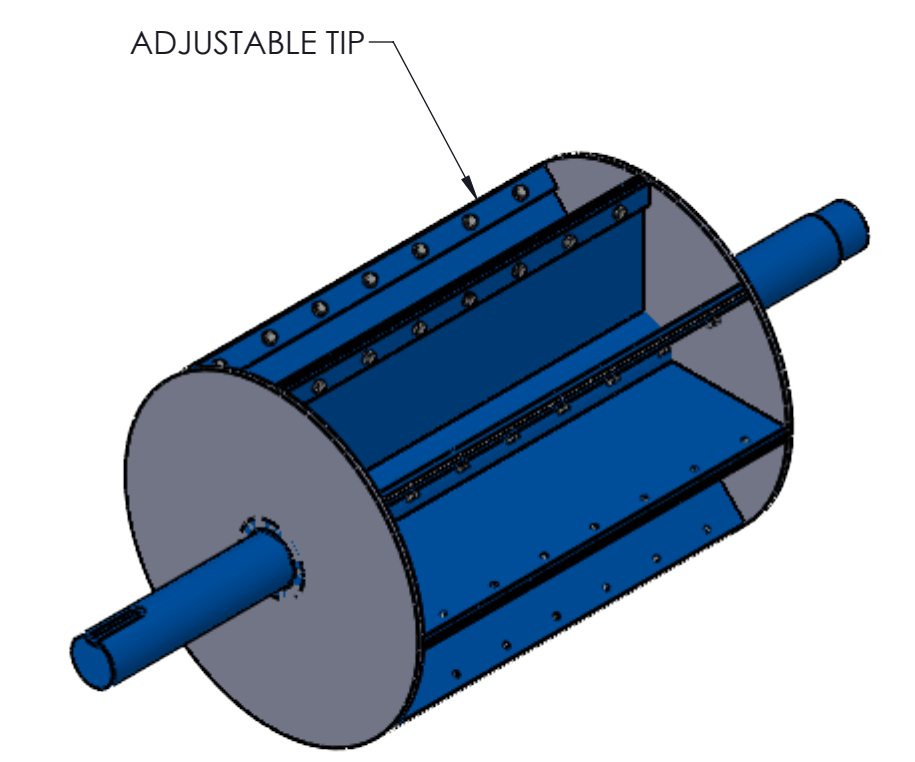
V - NO. & SIZE OF THRU HOLES
(SEE NOTE #2)

W - NO. & SIZE OF TAPPED HOLES
(SEE NOTE #2)

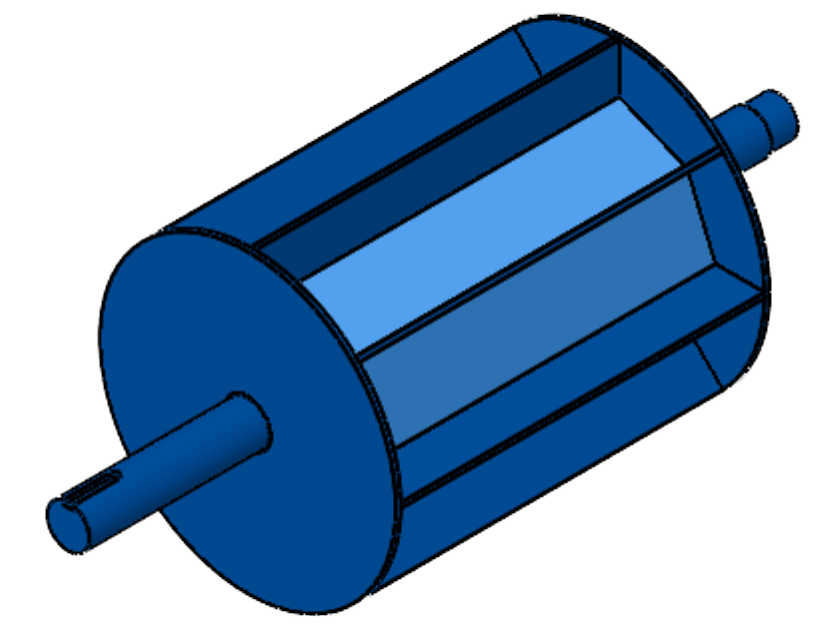
- NOTES:
1. VALVE HOUSINGS ARE CAST OF IRON, ALUMINUM, STEEL OR STAINLESS STEEL; FABRICATED OF STEEL OR STAINLESS STEEL. ALL ROTORS ARE FABRICATED OF STEEL OR STAINLESS STEEL.
 2. VALVE HOUSINGS ARE AVAILABLE WITH EITHER A SQUARE OR ROUND INLET AND OUTLET. ROUND FLANGES MATCH 150# ANSI DRILLING.
 3. STANDARD HOUSINGS ARE DESIGNED FOR 15 PSI (MAX) INTERNAL & DIFFERENTIAL @ 250 DEGREES F.
 4. INSPECTION DOOR IS OPTIONAL AND WILL BE FURNISHED ONLY WHEN SPECIFIED.
 5. END PLATES AND INSPECTION DOOR O-RINGS ARE OPTIONAL AND WILL BE FURNISHED ONLY WHEN SPECIFIED.
 6. AIR PURGE CONNECTIONS WITH BRASS LANTERN RINGS ARE OPTIONAL AND WILL BE FURNISHED ONLY WHEN SPECIFIED.
 7. VENT WITH SCH 10 PIPE IS OPTIONAL AND WILL BE FURNISHED ONLY WHEN SPECIFIED. VENT CONNECTION WILL CHANGE ROTOR ROTATION TO COUNTER-CLOCKWISE



TYPE 'A' ROTOR

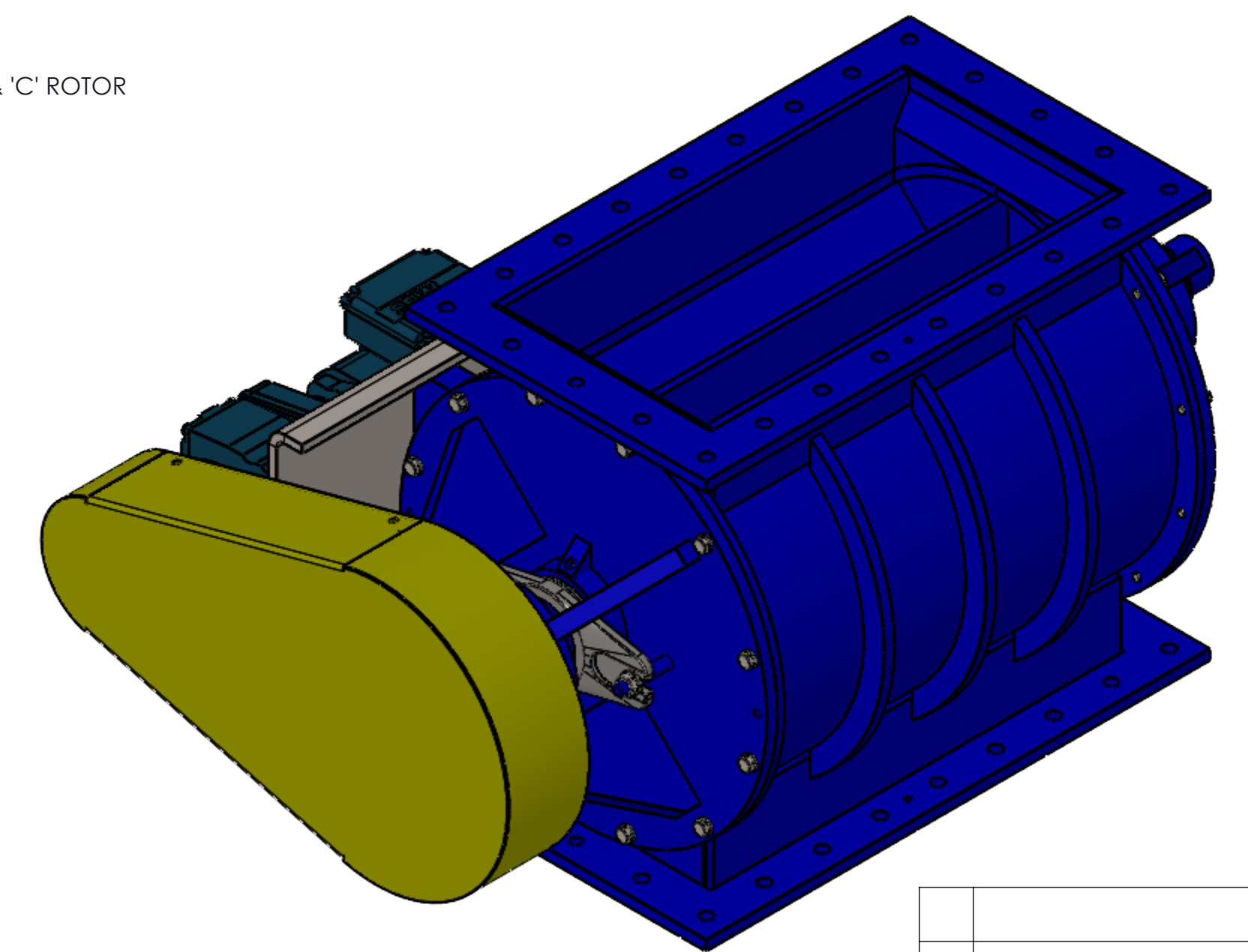
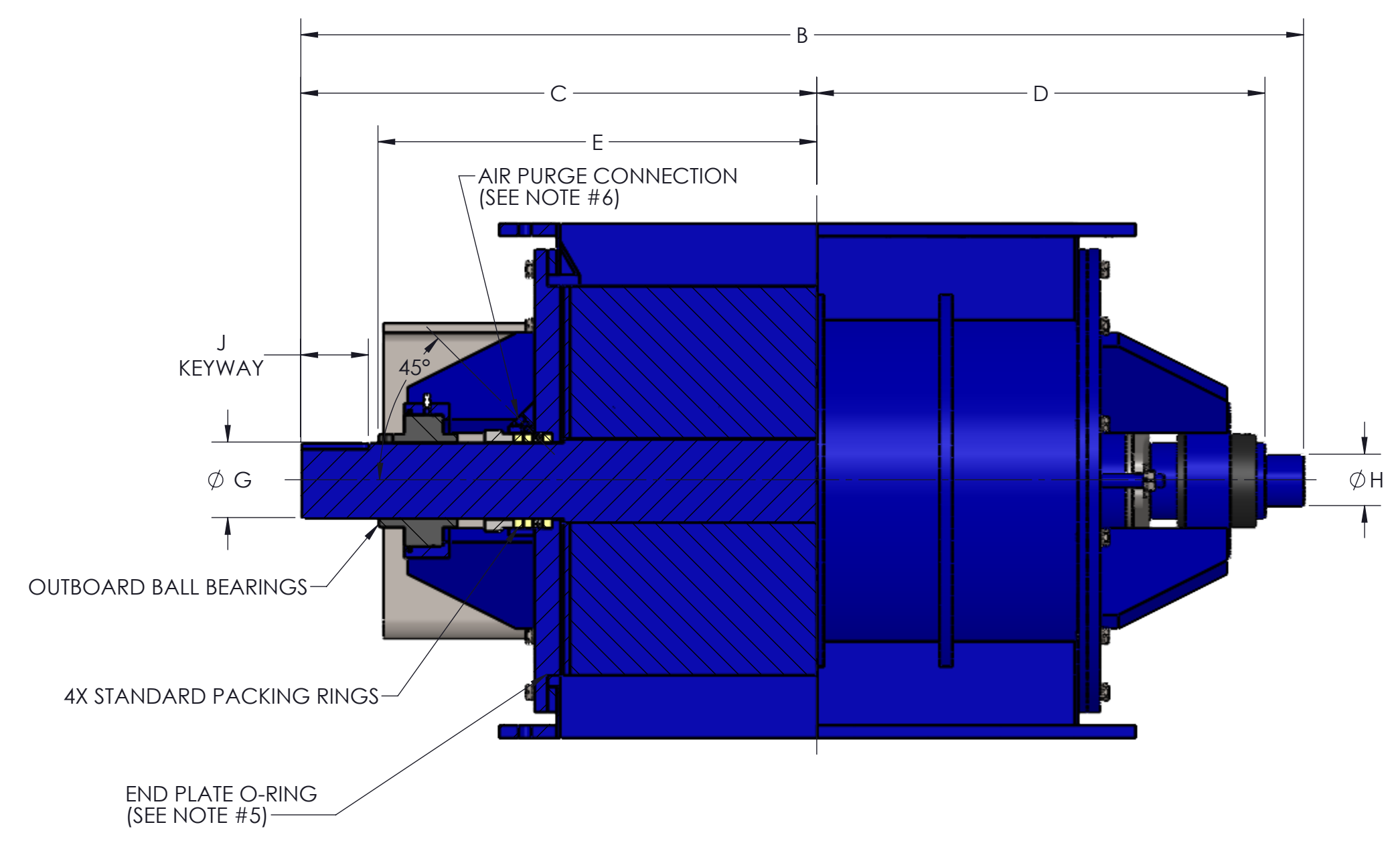
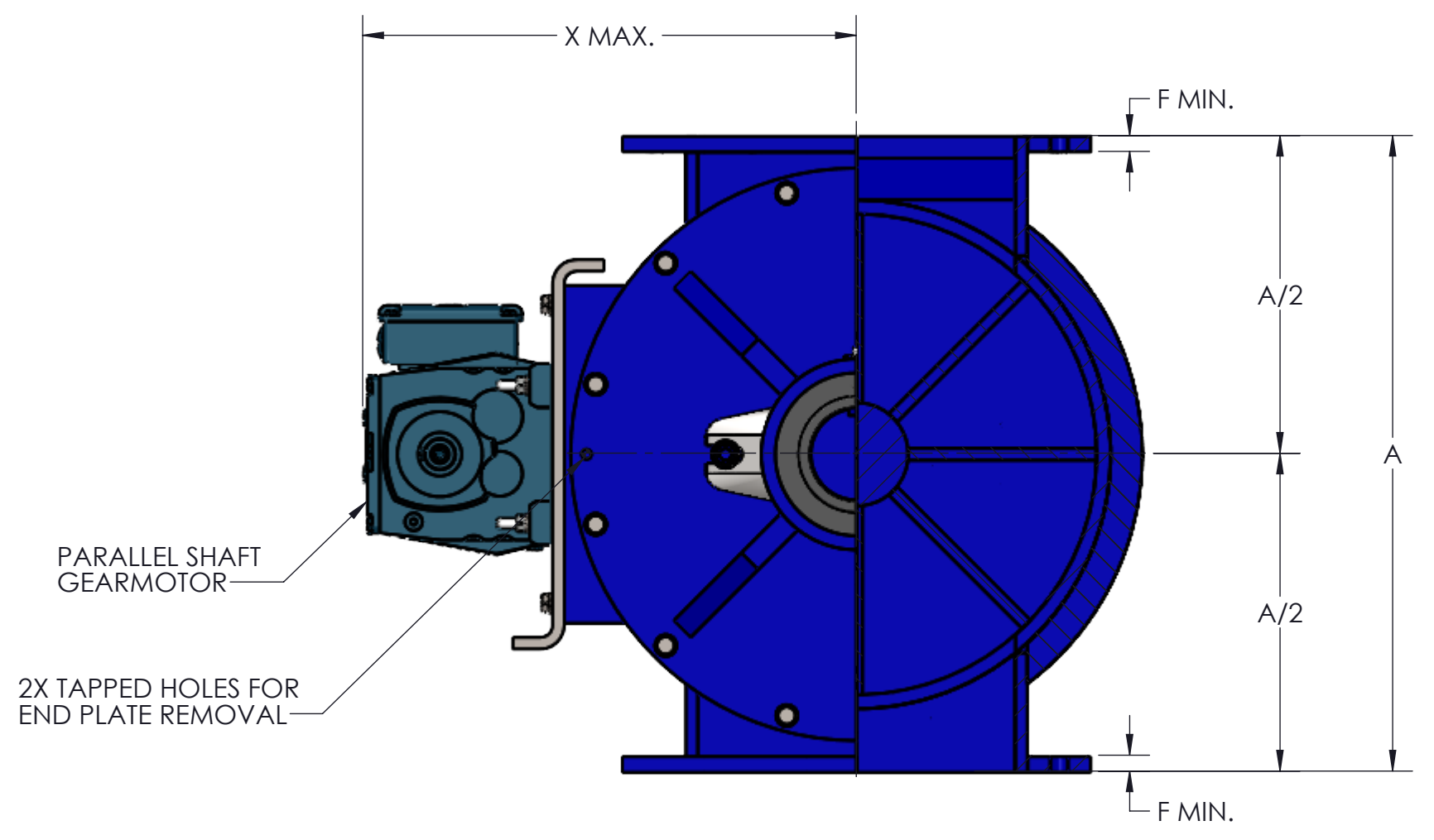


TYPE 'D' ROTOR



TYPE 'B' & 'C' ROTOR

ROTOR SIZES: 4"-12" 8-VANE
14"-24" 12-VANE



SIZE	ROTOR DIA. X LG.	ROTOR CAPACITY (CU. FT. PER REV.)				STD RPM	VENT SIZE	STD HP	A	B	C	D	E	F	G	H	J	K	L	M	N	P	Q	R	S	T	U	V	W	X	WEIGHT (C/S)
		AS	BS	CS	DS																										
4	6 X 8	.0856	.0548	.0258	.0798	38	1.25	.50	10.00	23.25	12.31	9.69	9.41	.31	1.44	1.00	.25 X .12 X 2.62	11.50	7.50	8.00	4.00	5.13	.63	2.56	.63	3.13	N/A	(10) .56	(2) .50-13UNC-2B	11.75	350
5	8 X 10	.210	.1284	.088	.202	38	1.50	.50	12.00	25.75	13.56	10.94	10.66	.44	1.94	1.25	.38 X .19 X 2.62	13.50	8.50	10.00	5.00	6.13	.63	3.06	.63	3.62	N/A	(10) .56	(2) .50-13UNC-2B	12.75	430
6	10 X 12	.416	.248	.159	.406	32	1.50	.50	14.00	28.38	14.88	12.25	11.84	.44	2.19	1.75	.50 X .25 X 2.62	15.50	9.50	12.00	6.00	7.13	.63	3.56	.63	4.13	N/A	(10) .56	(2) .50-13UNC-2B	13.81	500
8	12 X 16	.786	.428	.230	.778	32	2.00	.75	17.00	32.38	16.88	14.25	14.06	.44	2.44	2.00	.50 X .25 X 2.62	19.50	11.50	16.00	8.00	9.13	.63	2.28	.63	5.12	2.56	(22) .56	(2) .50-13UNC-2B	14.81	675
10	15 X 20	1.630	1.014	.308	1.622	32	2.50	.75	20.00	39.00	20.06	17.44	17.06	.44	2.94	2.00	.50 X .25 X 2.62	24.75	14.75	20.00	10.00	11.36	1.00	2.84	1.00	6.38	3.19	(22) .56	(2) .50-13UNC-2B	16.45	910
12	17 X 24	2.600	1.340	.518	2.590	32	2.50	.75	22.00	43.75	22.81	19.44	19.06	.56	2.94	2.25	.62 X .31 X 3.38	28.75	16.75	24.00	12.00	13.38	1.00	3.34	1.00	7.38	3.69	(22) .56	(2) .50-13UNC-2B	17.44	1150
14	19 X 26	3.430	1.880	.876	3.410	32	3.00	.75	24.00	46.63	24.25	20.88	20.47	.56	3.19	2.75	.62 X .31 X 3.38	31.00	18.00	26.00	13.00	14.48	1.00	3.63	1.00	8.00	4.00	(22) .56	(2) .50-13UNC-2B	18.44	1550
16	23 X 30	5.574	3.036	1.402	5.574	30	3.50	1.5	28.00	51.25	26.63	22.63	22.22	.62	3.19	2.75	.75 X .38 X 3.50	35.00	20.00	30.00	15.00	16.50	1.00	4.13	1.00	9.00	4.50	(22) .69	(2) .62-11UNC-2B	20.37	2200
18	25 X 34	7.638	4.124	1.874	7.636	28	3.50	1.5	30.00	54.38	28.19	24.69	24.38	.62	3.44	2.75	.75 X .38 X 3.50	39.00	22.00	34.00	17.00	18.50	1.00	4.63	1.00	10.00	5.00	(22) .69	(2) .62-11UNC-2B	21.44	2640
20	28 X 38	10.794	5.818	2.738	10.830	28	4.00	2.0	*	*	*	*	*	*	*	*	*	*	*	*	*	*	*	*	*	*	*	*	*	*	
22	32 X 42	15.966	8.686	4.094	16.010	26	5.00	2.0	*	*	*	*	*	*	*	*	*	*	*	*	*	*	*	*	*	*	*	*	*	*	
24	34 X 46	20.074	10.868	5.038	20.066	24	5.00	2.0	42.00	70.75	37.31	31.94	31.69	.75	3.75	3.75	.88 X .44 X 5.00	52.50	29.50	46.00	23.00	25.00	1.25	6.25	1.25	13.50	6.75	(22) .88	(2) .75-10UNC-2B	34.00	5250

GENERAL TOLERANCES
UNLESS OTHERWISE SPECIFIED THE FOLLOWING SHALL APPLY
MACHINING - .XX# .02 .XX# .005 ANGLES - 30°
SURFACE ROUGHNESS HEIGHT .63 MICRONS OR LESS
FABRICATION - UNDER 6 6 TO 24 24 TO 40 OVER 40
± .06 ± .12 ± .19 ± .25
UNLESS OTHERWISE SPECIFIED DIMENSIONS ARE IN INCHES.
UNLESS SPECIFIED DIMENSIONS & TOLERANCES INTERPRETED
PER ASME Y14.5-2009

REV. NO.	DESCRIPTION	DATE	BY
REVISIONS			
CUSTOMER:			
CUSTOMER PO NUMBER:			
YOUNG JOB NUMBER:			
TITLE			
YOUNG INDUSTRIES MODEL 'HC-2' ROTARY VALVE, SIZE 4"-24", CLASS 15 W/ PARALLEL SHAFT DRIVE. CLOSED ROTOR, STANDARD DIMENSION SHEET			
DRAWN BY: MEA		DATE: 08/08/24	
CHECKED BY:		SCALE=1:5	
DRAWING NUMBER		SHEET	
D-21404-29		1 OF 1	
		REV: 00	

