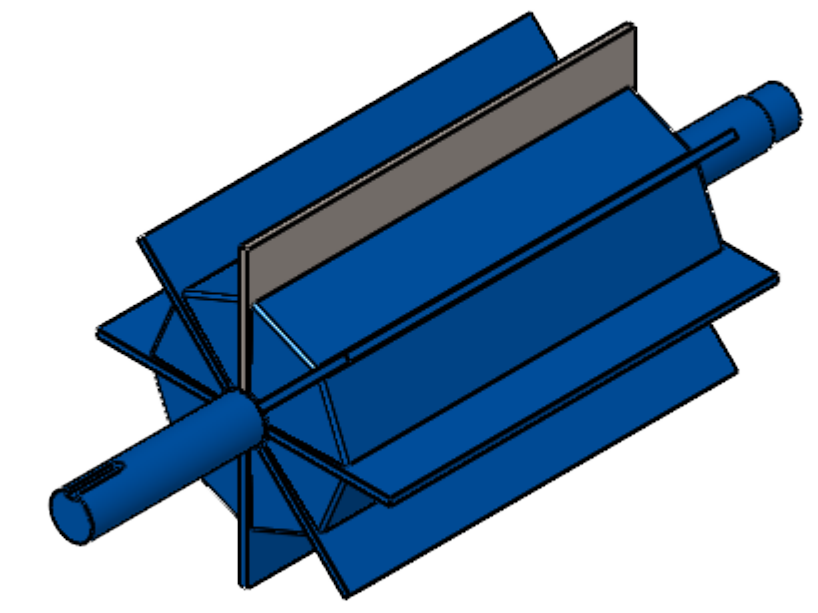
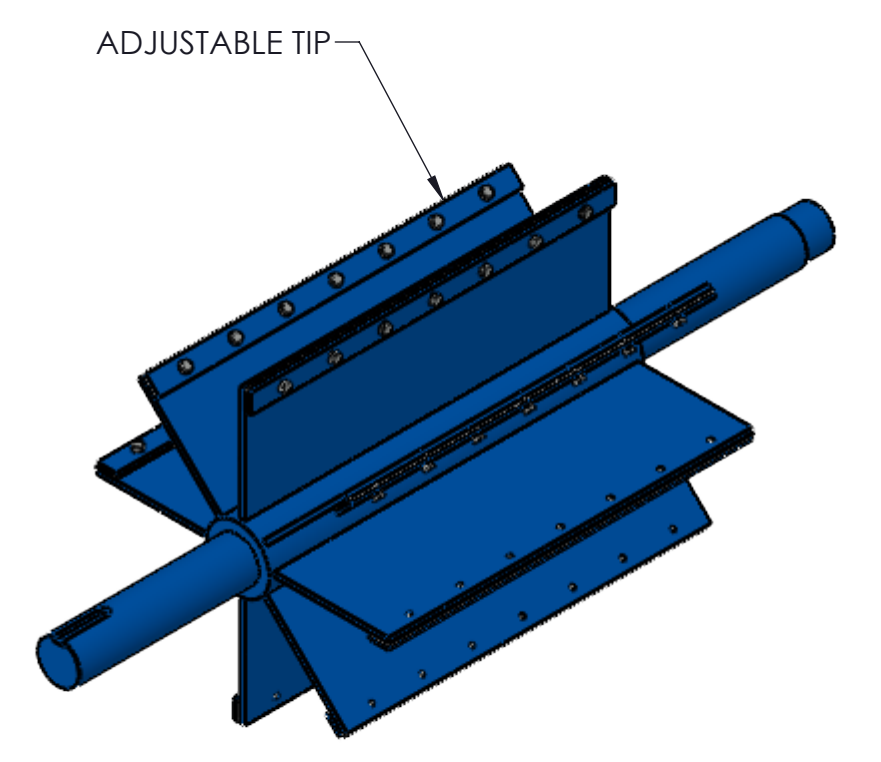


TYPE 'A' ROTOR



TYPE 'B' & 'C' ROTOR



TYPE 'D' ROTOR

ROTOR SIZES: 4"-12" 8-VANE
14"-24" 12-VANE

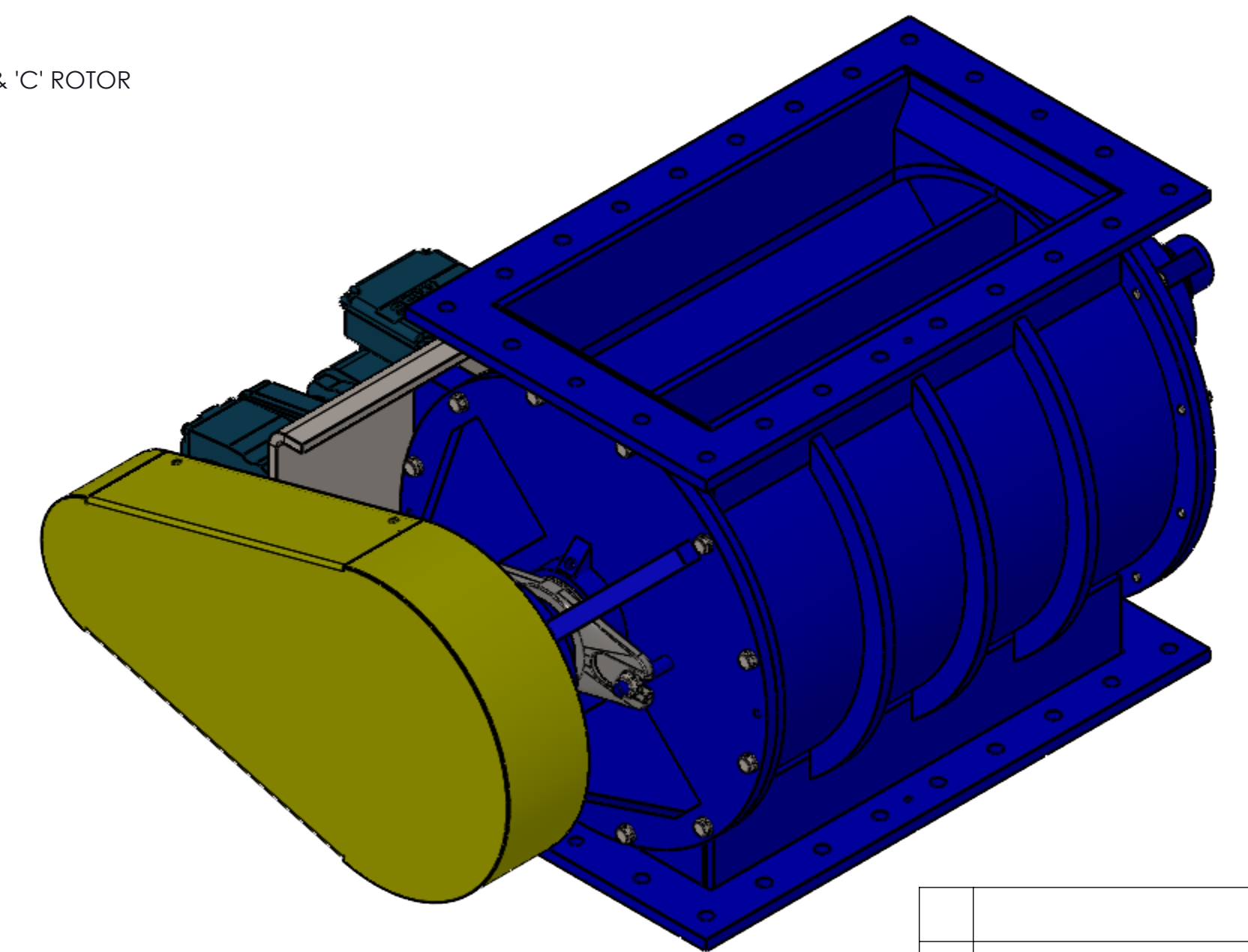
- NOTES:
1. VALVE HOUSINGS ARE CAST OF IRON, ALUMINUM, STEEL OR STAINLESS STEEL; FABRICATED OF STEEL OR STAINLESS STEEL. ALL ROTORS ARE FABRICATED OF STEEL OR STAINLESS STEEL.
 2. VALVE HOUSINGS ARE AVAILABLE WITH EITHER A SQUARE OR ROUND INLET AND OUTLET. ROUND FLANGES MATCH 150# ANSI DRILLING.
 3. STANDARD HOUSINGS ARE DESIGNED FOR 15 PSI (MAX) INTERNAL & DIFFERENTIAL @ 250 DEGREES F.
 4. INSPECTION DOOR IS OPTIONAL AND WILL BE FURNISHED ONLY WHEN SPECIFIED.
 5. END PLATES AND INSPECTION DOOR O-RINGS ARE OPTIONAL AND WILL BE FURNISHED ONLY WHEN SPECIFIED.
 6. AIR PURGE CONNECTIONS WITH BRASS LANTERN RINGS ARE OPTIONAL AND WILL BE FURNISHED ONLY WHEN SPECIFIED.
 7. VENT WITH SCH 10 PIPE IS OPTIONAL AND WILL BE FURNISHED ONLY WHEN SPECIFIED. VENT CONNECTION WILL CHANGE ROTOR ROTATION TO COUNTER-CLOCKWISE

V - NO. & SIZE OF THRU HOLES (SEE NOTE #2)

W - NO. & SIZE OF TAPPED HOLES (SEE NOTE #2)

TOTALLY ENCLOSED OSHA DESIGNED CHAIN GUARD
TOTALLY ENCLOSED CHAIN DRIVE INCLUDES:
DRIVE SPROCKET
VALVE SPROCKET
ROLLER CHAIN

SIZE	ROTOR DIA. X LG.	ROTOR CAPACITY (CU. FT. PER REV.)					STD RPM	VENT SIZE	STD HP	A	B	C	D	E	F	G	H	J	K	L	M	N	P	Q	R	S	T	U	V	W	X	WEIGHT (C/S)
		A	B	C	D	D3																										
4	6 X 8	.1056	.0684	.0324	.096	.0976	38	1.25	.50	10.00	23.25	12.31	9.69	9.41	.31	1.44	1.00	.25 X .12 X 2.62	11.50	7.50	8.00	4.00	5.13	.63	2.56	.63	3.13	N/A	(10) .56	(2) .50-13UNC-2B	11.75	350
5	8 X 10	.246	.1526	.105	.234	.224	38	1.50	.50	12.00	25.75	13.56	10.94	10.66	.44	1.94	1.25	.38 X .19 X 2.62	13.50	8.50	10.00	5.00	6.13	.63	3.06	.63	3.62	N/A	(10) .56	(2) .50-13UNC-2B	12.75	430
6	10 X 12	.474	.284	.184	.460	.436	32	1.50	.50	14.00	28.38	14.88	12.25	11.84	.44	2.19	1.75	.50 X .25 X 2.62	15.50	9.50	12.00	6.00	7.13	.63	3.56	.63	4.13	N/A	(10) .56	(2) .50-13UNC-2B	13.81	500
8	12 X 16	.882	.488	.264	.868	.824	32	2.00	.75	17.00	32.38	16.88	14.25	14.06	.44	2.44	2.00	.50 X .25 X 2.62	19.50	11.50	16.00	8.00	9.13	.63	2.28	.63	5.12	2.56	(22) .56	(2) .50-13UNC-2B	14.81	675
10	15 X 20	1.786	1.126	.344	1.768	1.676	32	2.50	.75	20.00	39.00	20.06	17.44	17.06	.44	2.94	2.00	.50 X .25 X 2.62	24.75	14.75	20.00	10.00	11.36	1.00	2.84	1.00	6.38	3.19	(22) .56	(2) .50-13UNC-2B	16.45	910
12	17 X 24	2.796	1.460	.568	2.774	2.632	32	2.50	.75	22.00	43.75	22.81	19.44	19.06	.56	2.94	2.25	.62 X .31 X 3.38	28.75	16.75	24.00	12.00	13.38	1.00	3.34	1.00	7.38	3.69	(22) .56	(2) .50-13UNC-2B	17.44	1150
14	19 X 26	3.574	2.008	.936	3.538	3.302	32	3.00	.75	24.00	46.63	24.25	20.88	20.47	.56	3.19	2.75	.62 X .31 X 3.38	31.00	18.00	26.00	13.00	14.48	1.00	3.63	1.00	8.00	4.00	(22) .56	(2) .50-13UNC-2B	18.44	1550
16	23 X 30	6.088	3.358	1.554	6.016	5.658	30	3.50	1.5	28.00	51.25	26.63	22.63	22.22	.62	3.19	2.75	.75 X .38 X 3.50	35.00	20.00	30.00	15.00	16.50	1.00	4.13	1.00	9.00	4.50	(22) .69	(2) .62-11UNC-2B	20.37	2200
18	25 X 34	8.25	4.502	2.128	8.204	7.698	28	3.50	1.5	30.00	54.38	28.19	24.69	24.38	.62	3.44	2.75	.75 X .38 X 3.50	39.00	22.00	34.00	17.00	18.50	1.00	4.63	1.00	10.00	5.00	(22) .69	(2) .62-11UNC-2B	21.44	2640
20	28 X 38	11.844	6.468	3.048	11.808	11.144	28	4.00	2.0	*	*	*	*	*	*	*	*	*	*	*	*	*	*	*	*	*	*	*	*	*	*	
22	32 X 42	17.382	9.562	4.514	17.344	16.456	26	5.00	2.0	*	*	*	*	*	*	*	*	*	*	*	*	*	*	*	*	*	*	*	*	*		
24	34 X 46	21.666	11.852	5.502	21.544	20.448	24	5.00	2.0	42.00	70.75	37.31	31.94	31.69	.75	3.75	3.75	.88 X .44 X 5.00	52.50	29.50	46.00	23.00	25.00	1.25	6.25	1.25	13.50	6.75	(22) .88	(2) .75-10UNC-2B	34.00	5250



REV. NO.	DESCRIPTION	DATE	BY
REVISIONS			
CUSTOMER:			
CUSTOMER PO NUMBER:			
YOUNG JOB NUMBER:			
TITLE			
YOUNG INDUSTRIES MODEL 'HC-2' ROTARY VALVE, SIZE 4"-24", CLASS 15 W/ PARALLEL SHAFT DRIVE. OPEN ROTOR, STANDARD DIMENSION SHEET			
DRAWN BY: MEA		DATE: 08/08/24	
CHECKED BY:		SCALE=1:5	
DRAWING NUMBER		SHEET	
D-21404-28		1 OF 1	
		REV: 00	

GENERAL TOLERANCES
UNLESS OTHERWISE SPECIFIED THE FOLLOWING SHALL APPLY
MACHINING - .XX" .02 .XXX" .005 ANGLES - 30°
SURFACE ROUGHNESS HEIGHT .63 MICRONS OR LESS
FABRICATION - UNDER 6 6 TO 24 24 TO 40 OVER 40
± .06 ± .12 ± .19 ± .25
UNLESS OTHERWISE SPECIFIED DIMENSIONS ARE IN INCHES.
UNLESS SPECIFIED DIMENSIONS & TOLERANCES INTERPRETED PER ASME Y14.5-2009

