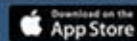


MODEL LH ROTARY VALVE

WWW.YOUNGINDS.COM

Now Available

Rotary Valve Calculator App



STANDARD FEATURES:

- ▶ Heavy duty construction with 15 PSIG internal and differential pressure rating.
- ▶ Cast or fabricated construction of iron, carbon steel, or 300 series stainless steel.
- ▶ Standard design/operating temperature up to 250°F.
- ▶ Round or square inlet and discharge flanges.
- ▶ Outboard-mounted precision ball bearings.
- ▶ Packing gland provides a tight rotor shaft seal with four rings of PTFE impregnated Kevlar.
- ▶ Open or shrouded rotors.
- ▶ End plates are piloted to assure concentricity of the housing so that tight internal clearances between rotor and housing is provided.

**ADVANCED
TECHNOLOGY
PROVEN DESIGN**

ENGINEERED TO INCREASE PRODUCTIVITY. BUILT TO LAST.

The Young Industries, Inc. Model "LH" (Low Headroom) Rotary Valve is a drop-thru design normally used in applications to handle relatively free flowing powders or granules. These rotary valves have been proven to provide superior performance and reliability in a wide range of bulk materials handling applications. The over-all cost of ownership is very low while the service life of the valve is long.

The Model "LH" Rotary Valve features transitioned inlet and discharge throats for those applications where minimizing height is required. This design utilizes smaller diameter rotors and has a lower profile than most other valves.

The rotor is engineered with eight vanes to insure there is always two blades positioned between the inlet and discharge. This two-blade seal and precision machined housing ensures that there is minimum air or gas leakage in those applications where the valve is used to seal between two different pressure or vacuum zones.

The Model "LH" Rotary Valve is recommended for applications with low headroom requirements or when the valve is sized based on matching flange sizing and throughput capacity is not a concern.

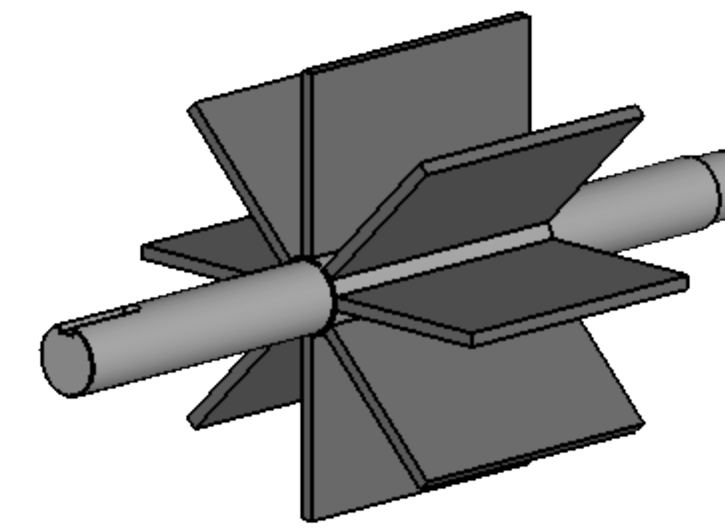
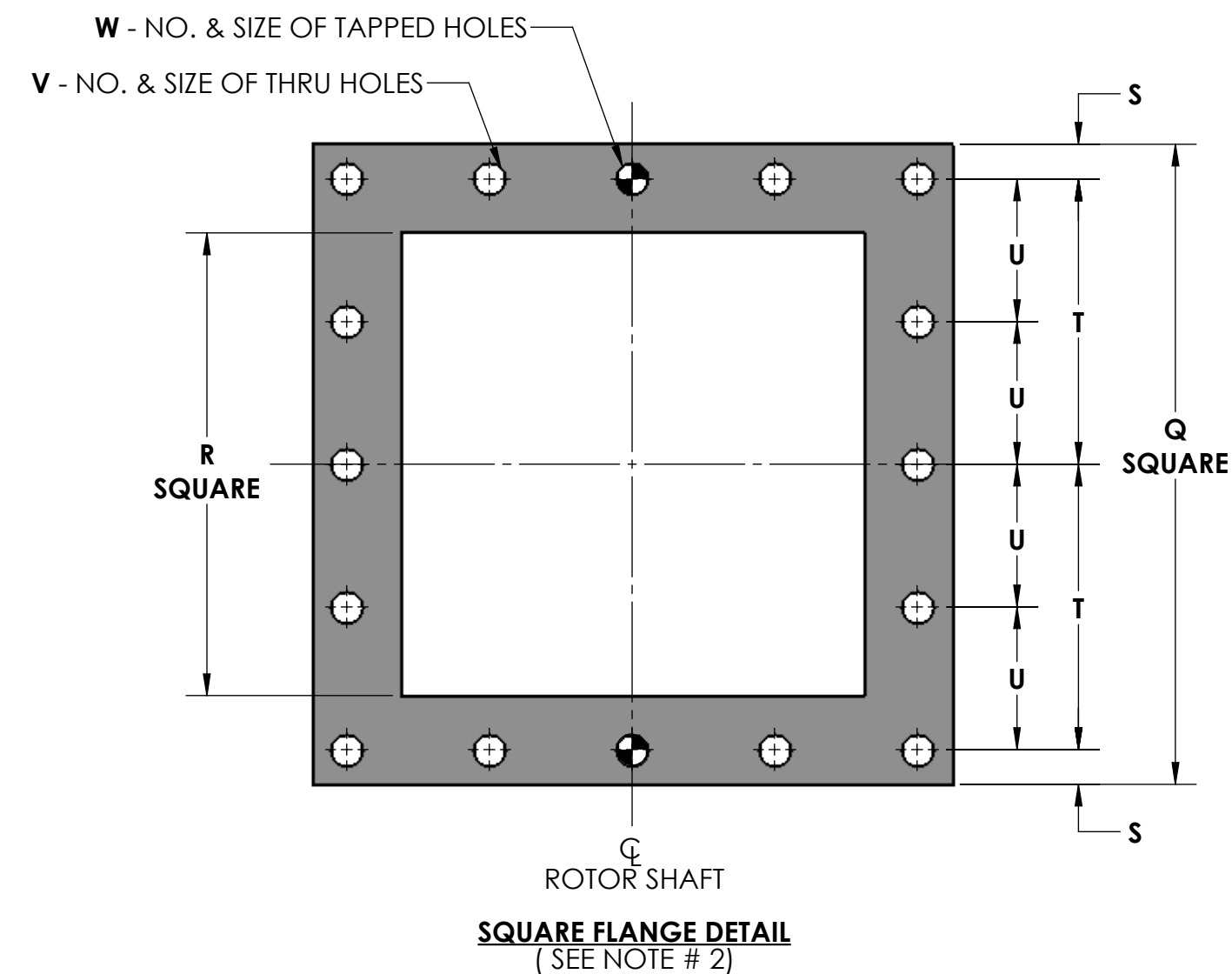
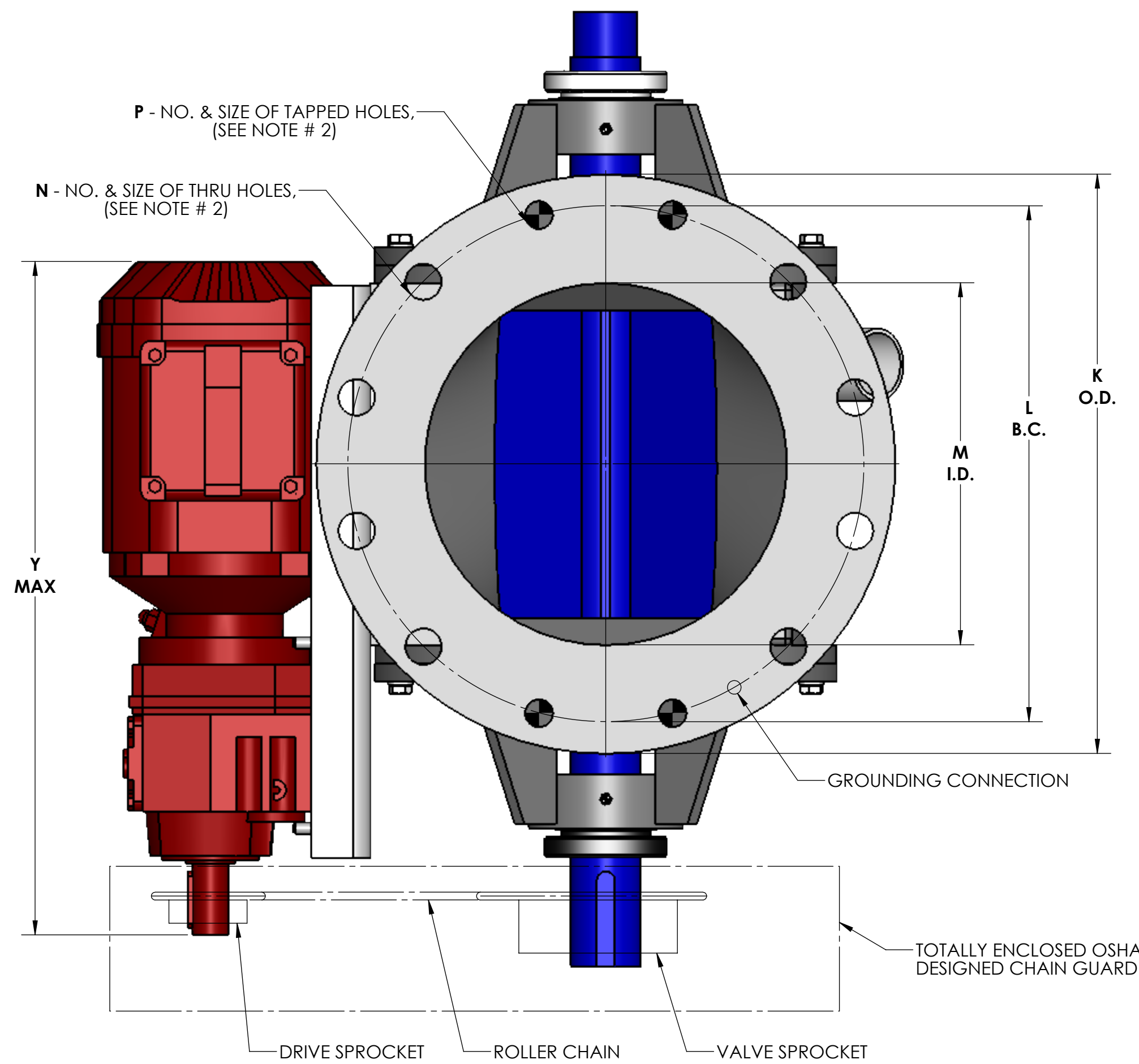
MODEL LH ROTARY VALVE



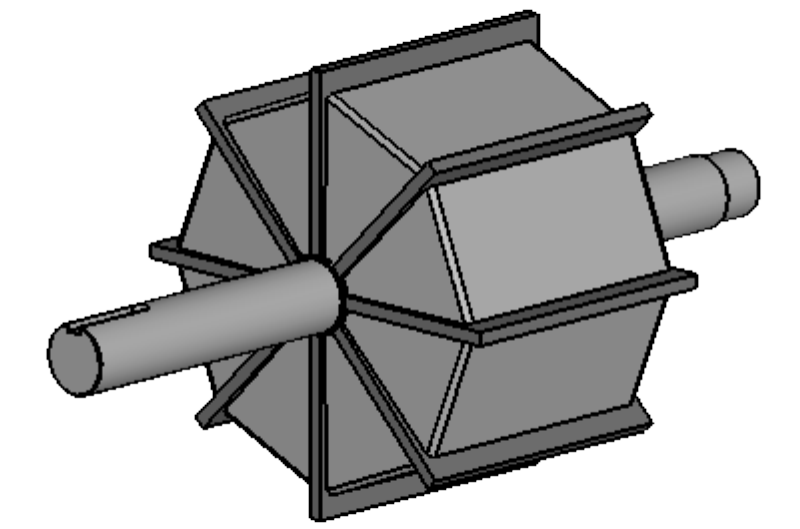
OPTIONAL FEATURES:

- High internal pressure designs up to 350 PSIG.
- High temperature designs up to 1500°F.
- Sizes up to 36" with double length styles available.
- Roller chain drive with parallel shaft TEFC driven gearmotor is standard with explosion proof motors of any specified manufacturer available.
- Shaft mounted drive is available.
- Special materials of construction including various grades of Stainless Steel, Hastelloy, Titanium, Inconel or Engineered Plastics.
- Interior polish or electro-polish per application requirement.
- Special packing materials of graphite, food grade PTFE or as needed by process.
- Interior coating for providing abrasion resistance or material release include hard chrome plating, nickel plating, tungsten carbide, Stellite, or Teflon.
- Lantern ring with purge connection in the packing gland.
- Rotor shaft Mechanical Seals.
- Self-adjusting packing follower.
- Shaft seal coatings.
- Inlet material deflector/baffle for granular products.
- Direct venting, with vent installed in the housing.
- End plate purges.
- Side access/inspection panel for access to the rotor interior.
- Rotor tips and edges can be beveled.
- Replaceable rotor tips of flexible or abrasion resistant materials.
- Exterior painting and coatings to meet customer specifications.

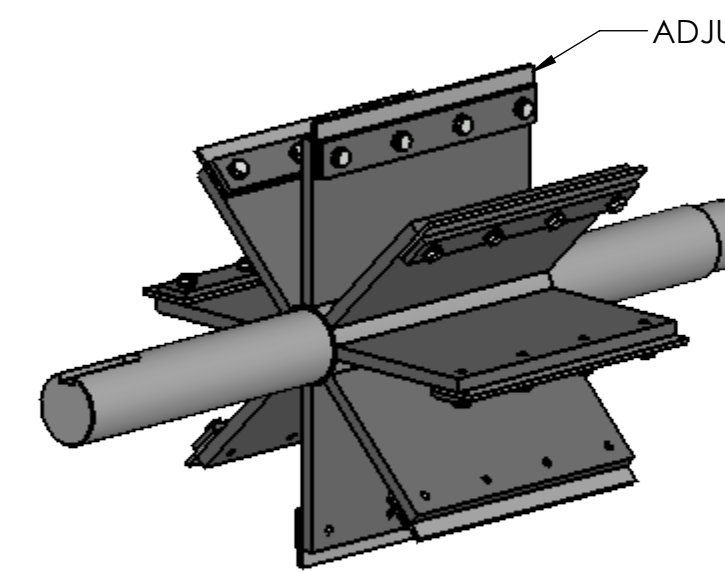




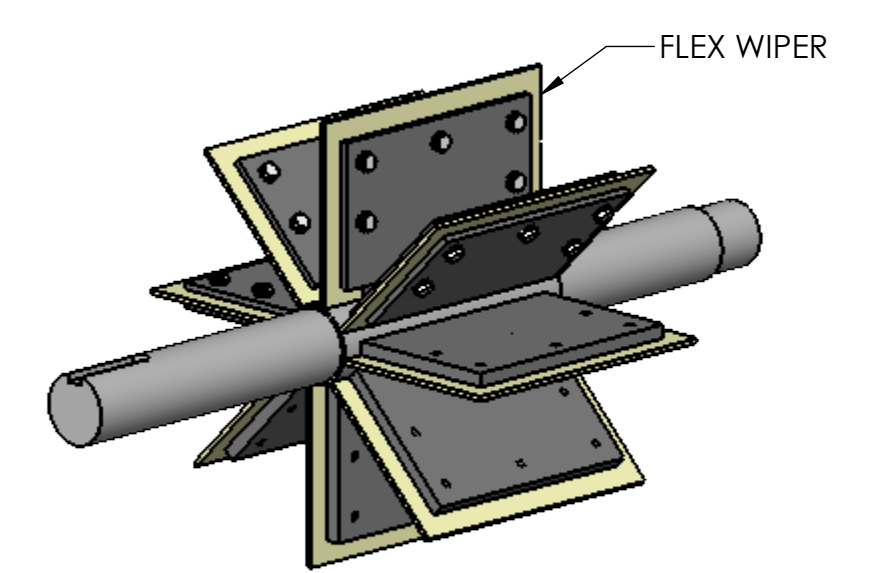
TYPE 'A' ROTOR



TYPE 'B' & 'C' ROTOR

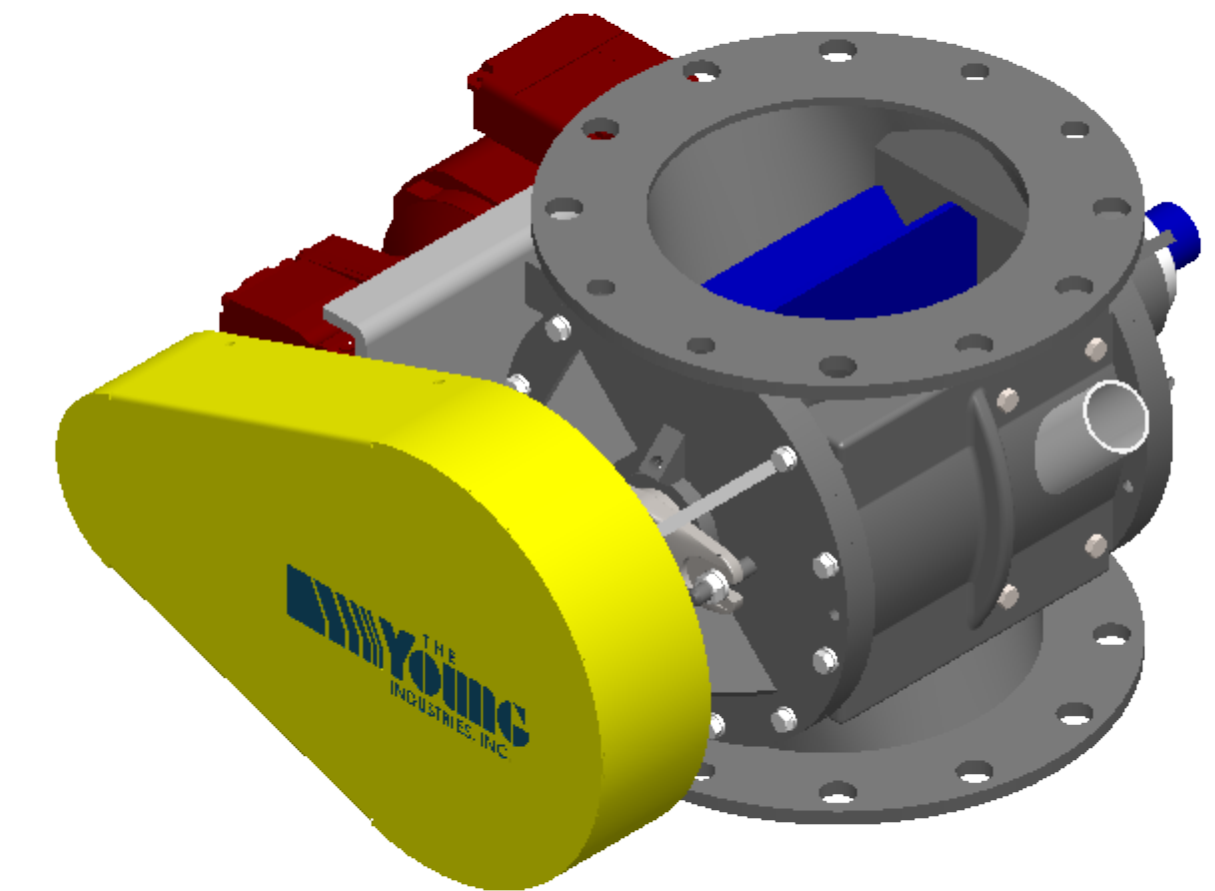
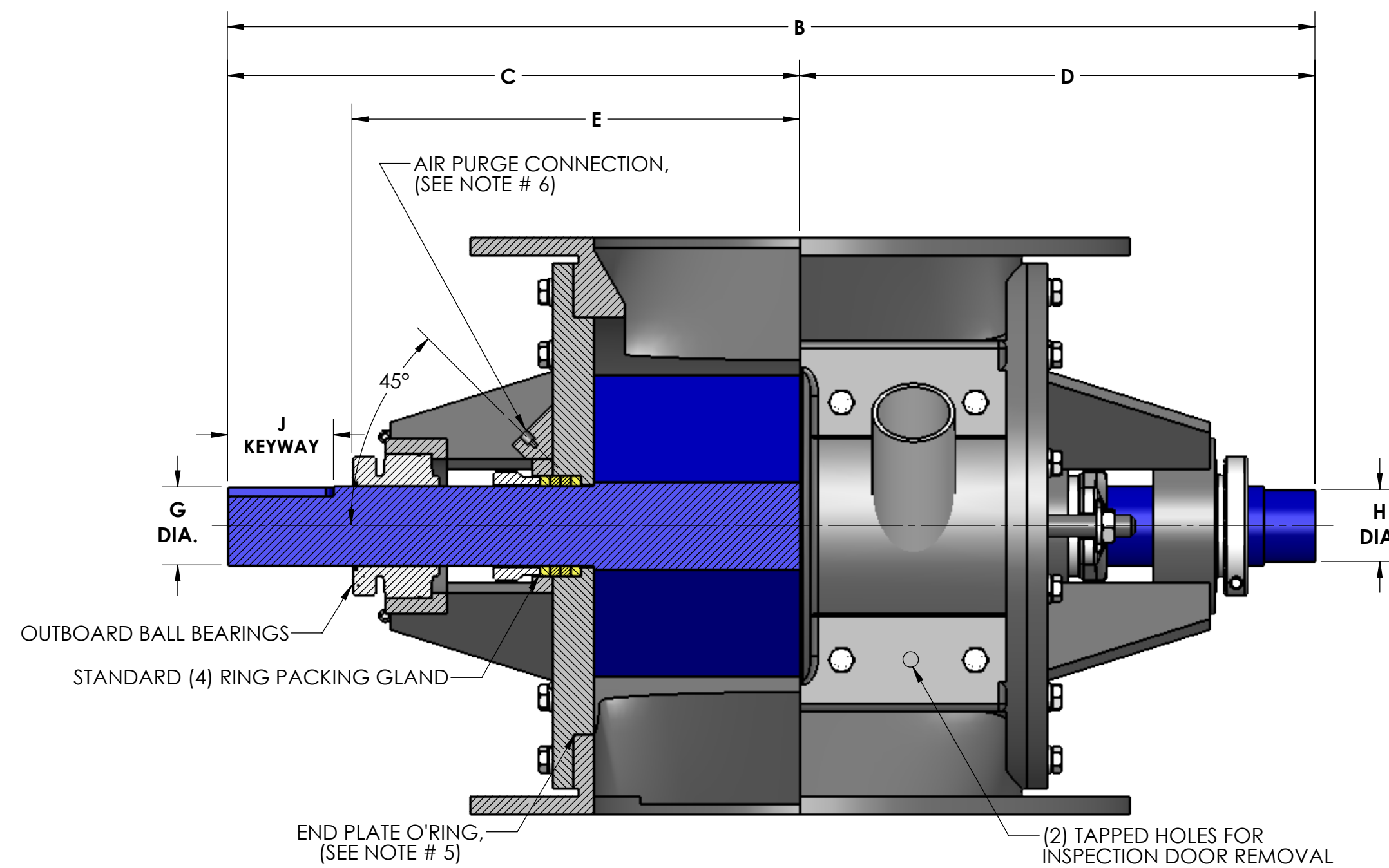
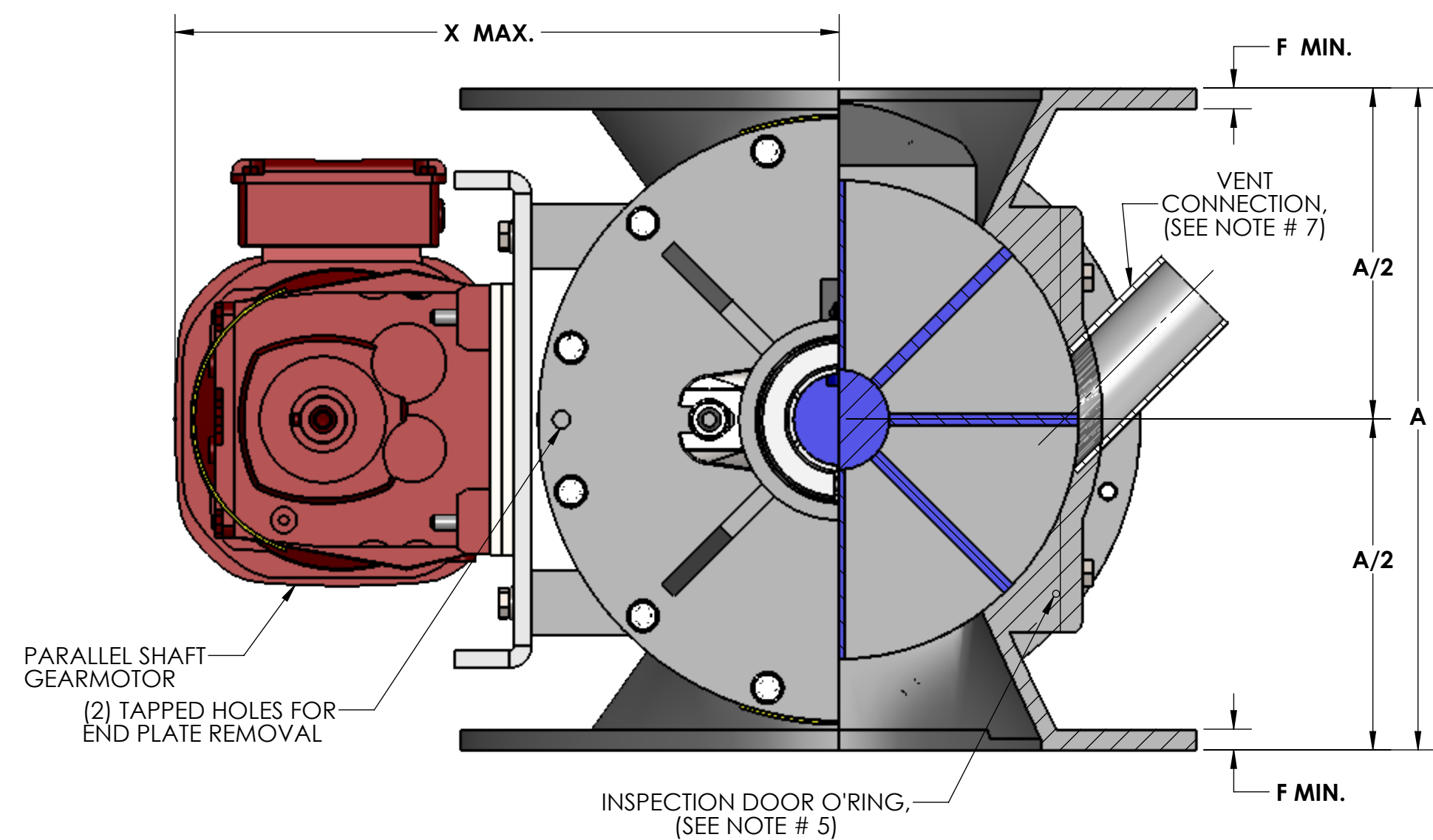


TYPE 'D' ROTOR



TYPE 'D3' ROTOR

ROTOR SIZES: 6" - 16" 8-VANES
18" - 24" 12-VANES



Size	ROTOR DIA x LG.	ROTOR CAPACITY CU. FT. PER REV.					STD RPM	VENT SIZE	STD HP	A	B	C	D	E	F	G	H	J	K	L	M	N	P	Q	R	S	T	U	V	W	X	Y	WEIGHT
		A	B	C	D	DB																											
6	6 x 6	.0793	.0513	.0243	.0721	.0708	32	1.50	.50	10.00	21.25	11.31	8.69	8.31	.44	1.19	1.00	.25 x .12 x 2.62	11.00	9.50	6.00	(4) .88	(4) .75-10UNC-2B	9.50	6.00	.62	4.12	N/A	(6) .56	(2) .50-13UNC-2B	13.31	20.38	245
8	8 x 8	.198	.122	.0840	.188	.175	32	2.00	.50	12.00	23.50	12.44	9.81	9.44	.44	1.44	1.25	.38 x .19 x 2.62	13.50	11.75	8.00	(4) .88	(4) .75-10UNC-2B	11.50	8.00	.62	5.12	2.56	(14) .56	(2) .50-13UNC-2B	14.31	20.38	350
10	10 x 10	.395	.237	.153	.383	.357	32	2.50	.50	14.00	26.38	13.88	11.25	10.88	.44	1.94	1.75	.50 x .25 x 2.62	16.00	14.25	10.00	(8) 1.00	(4) .88-9UNC-2B	14.75	10.00	1.00	6.38	3.19	(14) .56	(2) .50-13UNC-2B	15.38	20.38	415
12	12 x 12	.662	.367	.198	.652	.610	32	2.50	.75	17.00	28.38	14.88	12.25	11.88	.56	1.94	1.75	.50 x .25 x 2.62	19.00	17.00	12.00	(8) 1.00	(4) .88-9UNC-2B	16.75	12.00	1.00	7.38	3.69	(14) .56	(2) .50-13UNC-2B	16.38	20.38	580
14	15 x 13	1.161	.732	.224	1.15	1.003	30	3.00	.75	20.00	29.62	15.38	12.75	12.38	.56	2.19	2.00	.50 x .25 x 2.62	21.00	18.75	13.00	(8) 1.12	(4) 1.00-8UNC-2B	18.00	13.00	1.00	8.00	4.00	(14) .69	(2) .50-13UNC-2B	18.00	21.38	750
16	17 x 15	1.748	.912	.355	1.735	1.639	30	3.50	1.0	22.00	32.75	17.31	13.94	13.56	.62	2.44	2.25	.62 x .31 x 3.38	23.50	21.25	15.00	(12) 1.12	(4) 1.00-8UNC-2B	20.00	15.00	1.00	9.00	4.50	(14) .69	(2) .62-11UNC-2B	19.00	21.38	900
18	19 x 17	2.364	1.29	.626	2.341	2.154	28	3.50	1.0	24.00	34.75	18.31	14.94	14.56	.62	2.44	2.25	.62 x .31 x 3.38	25.00	22.75	17.00	(12) 1.25	(4) 1.12-7UNC-2B	22.00	17.00	1.00	10.00	5.00	(14) .69	(2) .62-11UNC-2B	19.94	21.38	950
20	21 x 19	3.166	1.715	.837	3.142	2.908	28	4.00	1.5	26.00	38.62	20.31	16.81	16.44	.62	2.94	2.75	.75 x .38 x 3.50	27.50	25.00	19.00	(16) 1.25	(4) 1.12-7UNC-2B	25.50	19.00	1.25	11.50	5.75	(14) .81	(2) .75-10UNC-2B	22.00	25.75	1,450
22	23 x 21	4.268	2.351	1.046	4.242	3.941	26	5.00	1.5	28.00	40.62	21.31	17.81	17.44	.62	2.94	2.75	.75 x .38 x 3.50	29.75	27.25	21.00	(16) 1.38	(4) 1.25-7UNC-2B	27.50	21.00	1.25	12.50	6.25	(14) .81	(2) .75-10UNC-2B	23.00	25.75	1,520
24	25 x 23	5.587	3.046	1.386	5.558	5.189	24	5.00	1.5	30.00	42.62	22.31	18.81	18.44	.62	2.94	2.75	.75 x .38 x 3.50	32.00	29.50	23.00	(16) 1.38	(4) 1.25-7UNC-2B	29.50	23.00	1.25	13.50	6.75	(14) .81	(2) .75-10UNC-2B	24.06	25.75	1,600

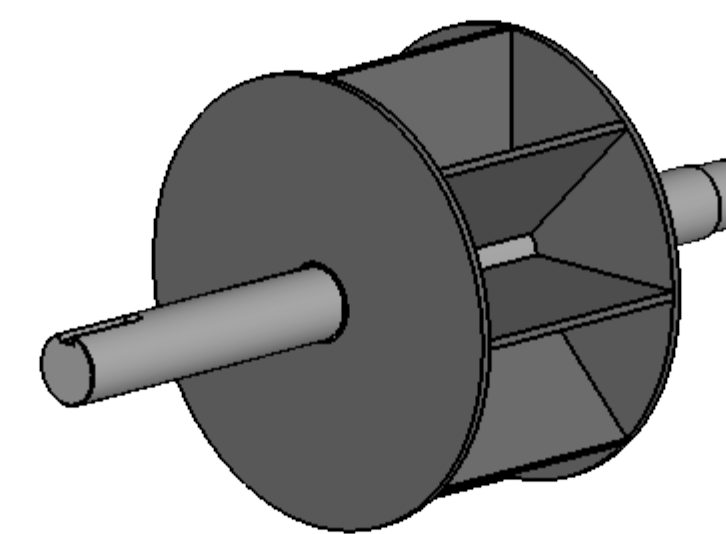
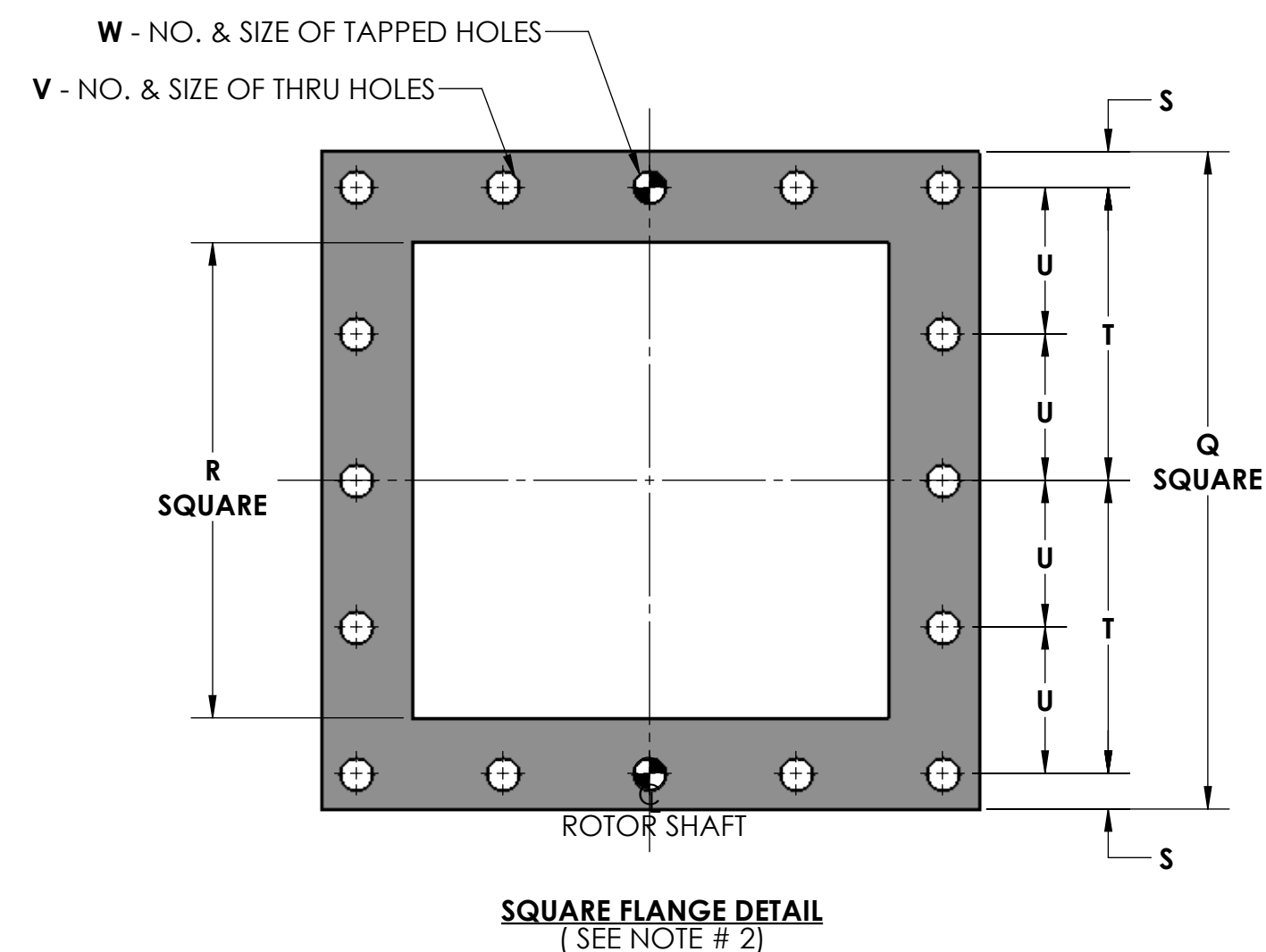
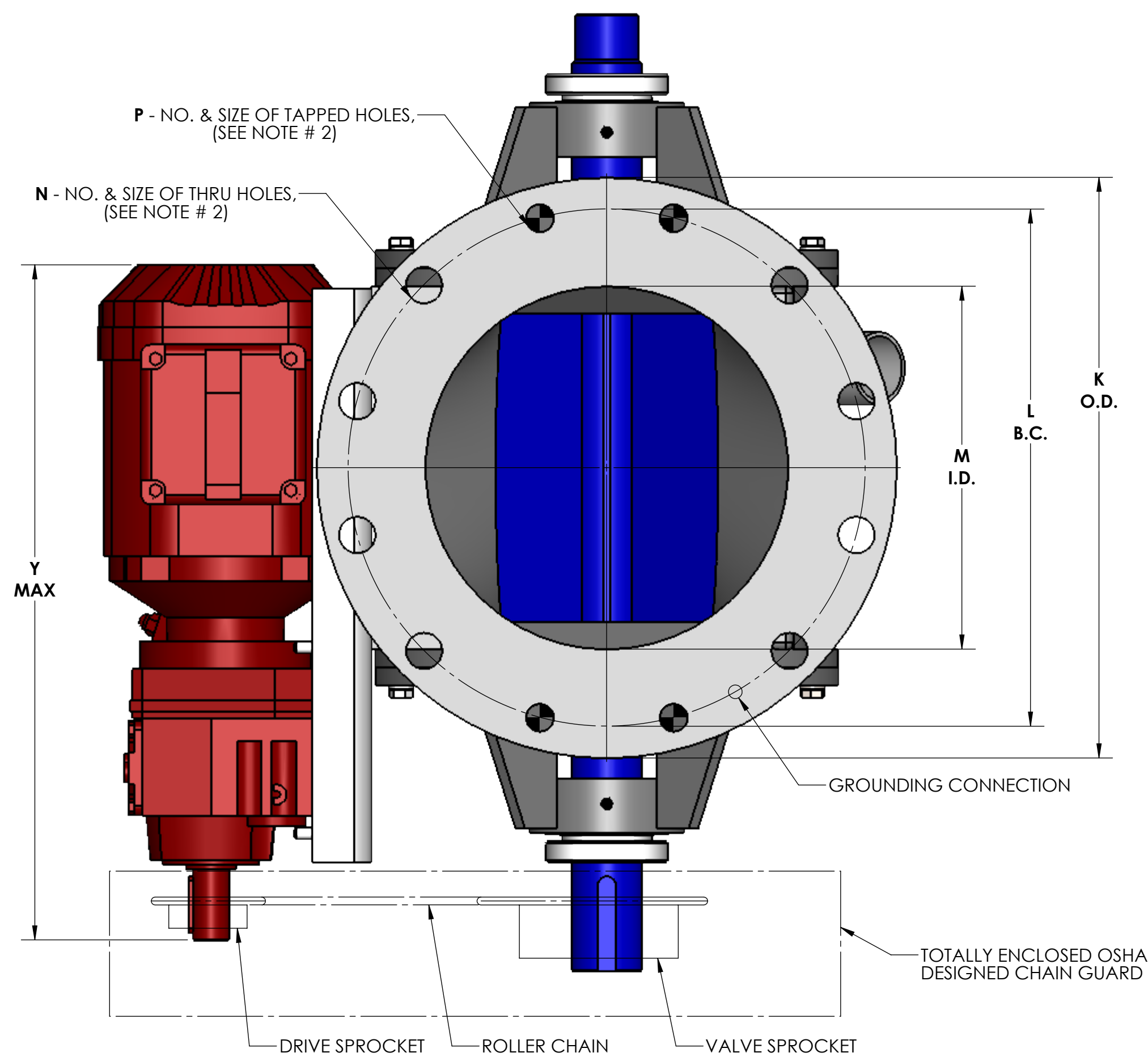
SPECIFICATIONS ARE SUBJECT TO CHANGE WITHOUT NOTIFICATION

NOTES:

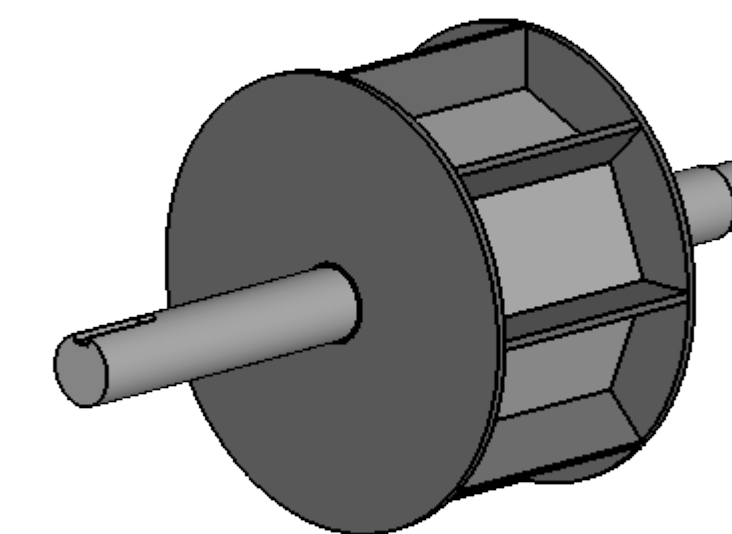
1. VALVE HOUSINGS ARE CAST OF IRON OR ALUMINUM; FABRICATED OF STEEL OR STAINLESS STEEL. ALL ROTORS ARE FABRICATED OF STEEL OR STAINLESS STEEL.
2. VALVE HOUSINGS ARE AVAILABLE WITH ANY COMBINATION OF SQUARE OR ROUND INLET AND OUTLET. ROUND FLANGES MATCH 150# ANSI DRILLING.
3. STANDARD HOUSINGS ARE DESIGNED FOR 15 PSI (MAX) INTERNAL & DIFFERENTIAL @ 250 DEGREES F.
4. INSPECTION DOOR IS OPTIONAL AND WILL BE FURNISHED ONLY WHEN SPECIFIED.
5. END PLATES AND INSPECTION DOOR O-RINGS ARE OPTIONAL AND WILL BE FURNISHED ONLY WHEN SPECIFIED.
6. AIR PURGE CONNECTIONS 1/8" NPT WITH BRASS LANTERN RINGS ARE OPTIONAL AND WILL BE FURNISHED ONLY WHEN SPECIFIED.
7. VENT WITH SCH 10 PIPE IS OPTIONAL AND WILL BE FURNISHED ONLY WHEN SPECIFIED. VENT CONNECTION WILL CHANGE ROTOR ROTATION TO COUNTER-CLOCKWISE.

GENERAL TOLERANCES	
UNLESS OTHERWISE SPECIFIED THE FOLLOWING SHALL APPLY	
MACHINING - .XX = .02 XXXX = .005 ANGLE = .50°	
SURFACE ROUGHNESS HEIGHT 63 MICRONS OR LESS	
FABRICATION - UNDER 6" 6 TO 24" 24 TO 60" OVER 60"	
± .06 ± .12 ± .19 ± .25	
UNLESS OTHERWISE SPECIFIED DIMENSIONS ARE IN INCHES	

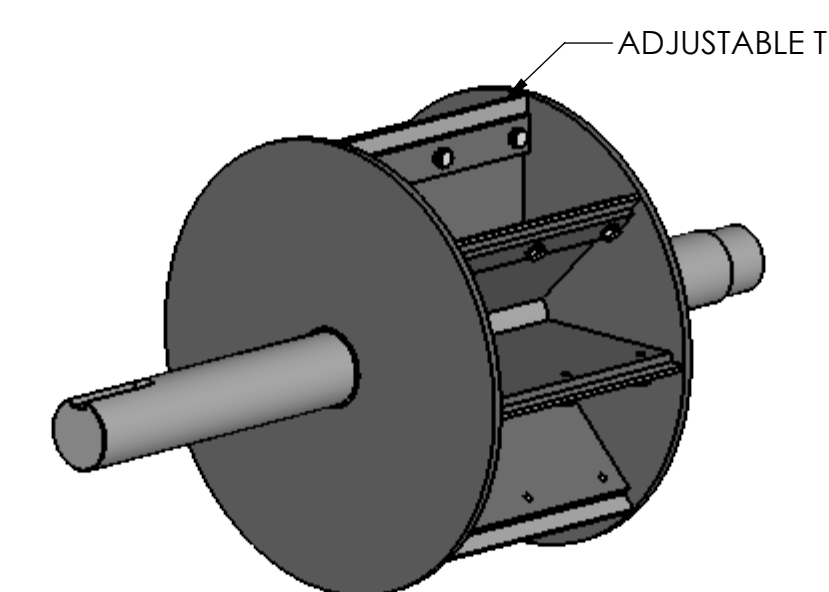
REV. NO.	DESCRIPTION	DATE	BY
REVISIONS			
CUSTOMER			
CUST. NO.			
YOUR ORDER NO.			
TITLE			
YOUNG INDUSTRIES MODEL 'LH' ROTARY VALVE, SIZE 6" - 24", CLASS 15 WITH PARALLEL SHAFT DRIVE, OPEN ROTOR STANDARD DIMENSION SHEET			
YOUNG INDUSTRIES, INC. MUNCY, PENNSYLVANIA 17756 TELEPHONE: 570-546-3165			
DRAWN BY: BMF	DATE DRAWN: 3/21/16		
CHECKED BY:	SCALE: 1:3		
DRAWING NUMBER	S-4-6392		REV:



TYPE 'AS' ROTOR

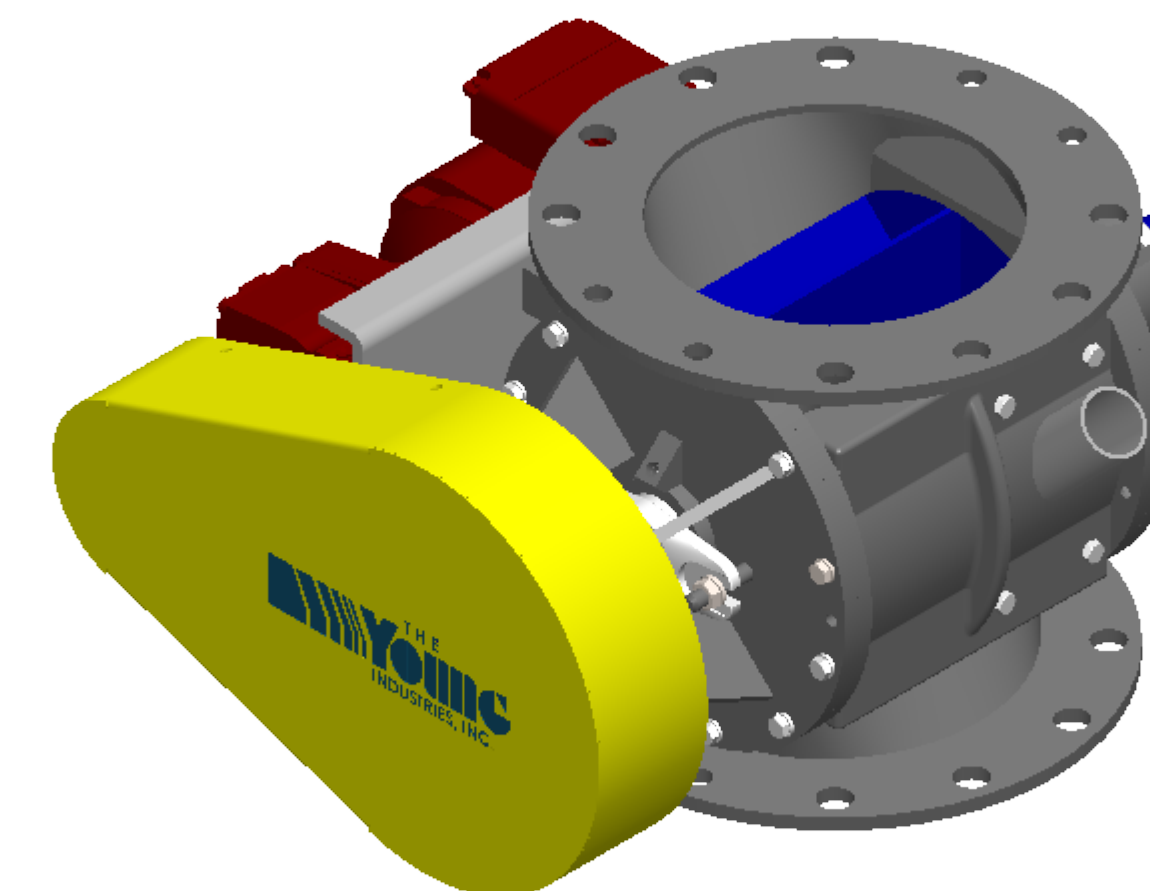
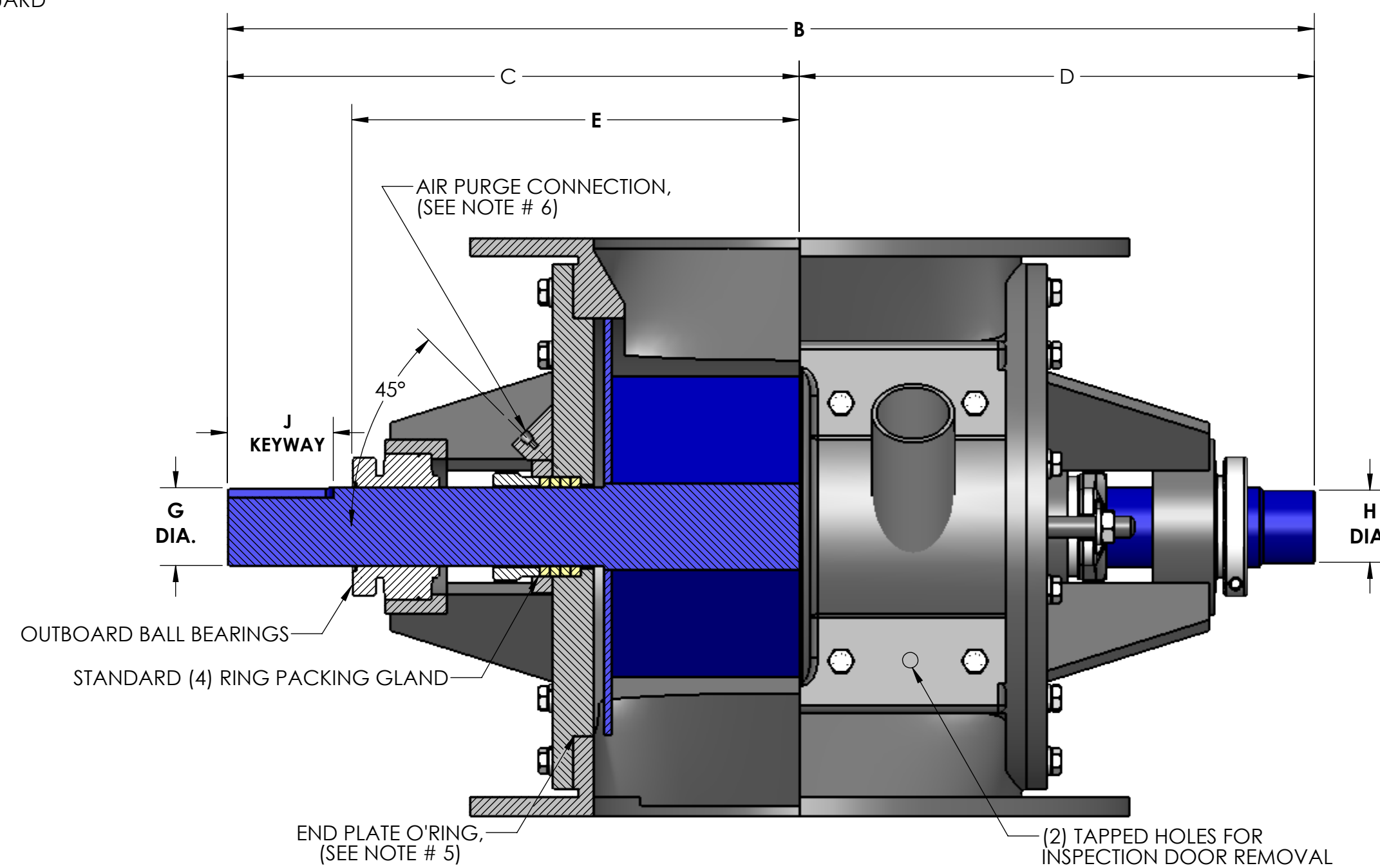
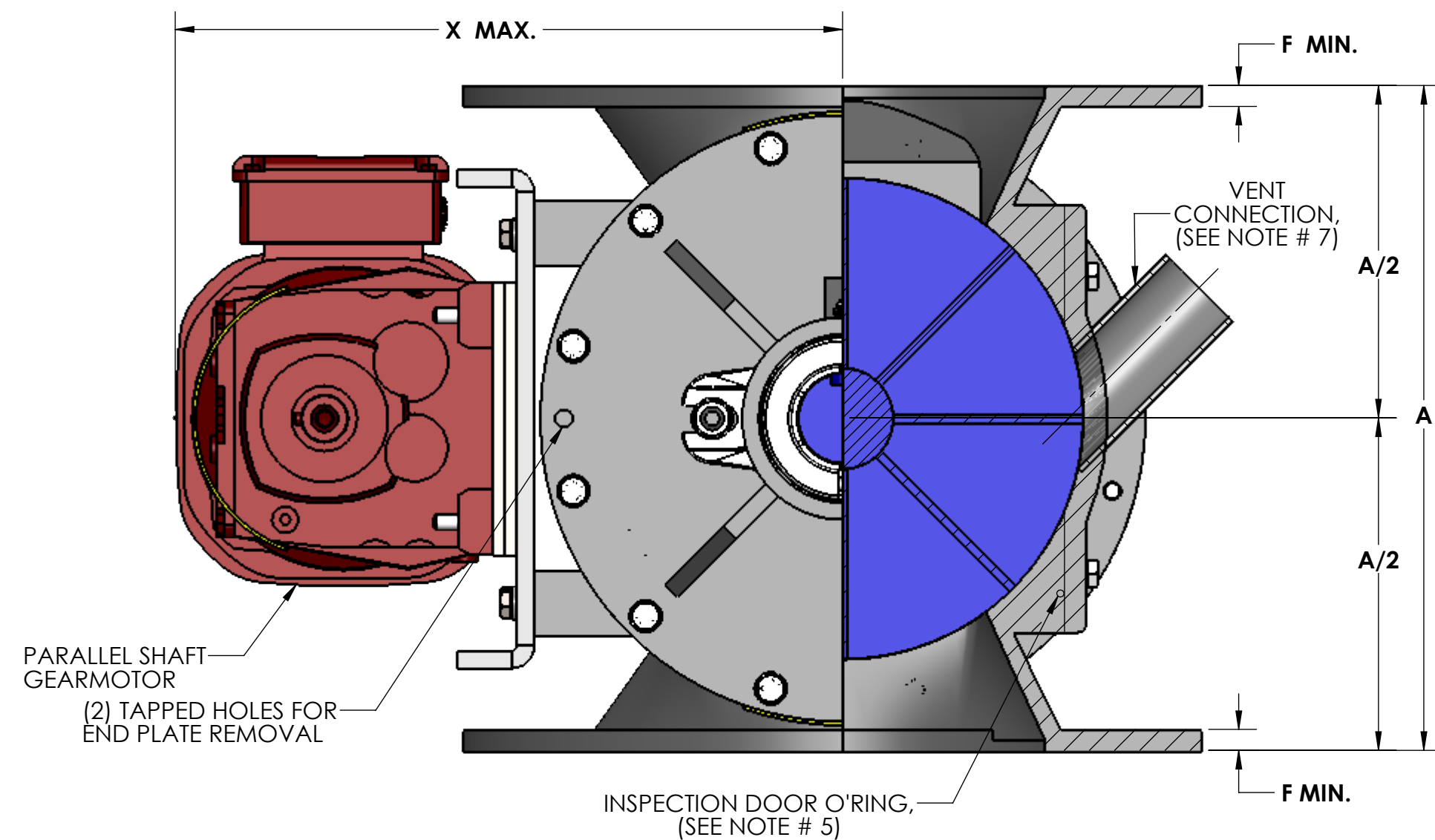


TYPE 'BS' & 'CS' ROTOR



TYPE 'DS' ROTOR

ROTOR SIZES: 6" - 16" 8-VANES
18" - 24" 12-VANES



Size	ROTOR DIA x LG.	ROTOR CAPACITY CU. FT. PER REV.				STD RPM	VENT SIZE	STD HP	A	B	C	D	E	F	G	H	J	K	L	M	N	P	Q	R	S	T	U	V	W	X	Y	WEIGHT C/S
		AS	BS	CS	DS																											
6	6x6	.0709	.0453	.0214	.0655	32	1.50	.50	10.00	21.25	11.31	8.69	8.31	.44	1.19	1.00	.25 x .12 x 2.62	11.00	9.50	6.00	(4) .88	(4) .75-10UNC-2B	9.50	6.00	.62	4.12	N/A	(6) .56	(2) .50-13UNC-2B	13.31	20.38	245
8	8x8	.182	.112	.0765	.175	32	2.00	.50	12.00	23.50	12.44	9.81	9.44	.44	1.44	1.25	.38 x .19 x 2.62	13.50	11.75	8.00	(4) .88	(4) .75-10UNC-2B	11.50	8.00	.62	5.12	2.56	(14) .56	(2) .50-13UNC-2B	14.31	20.38	350
10	10x10	.371	.221	.142	.361	32	2.50	.50	14.00	26.38	13.88	11.25	10.88	.44	1.94	1.75	.50 x .25 x 2.62	16.00	14.25	10.00	(8) 1.00	(4) .88-9UNC-2B	14.75	10.00	1.00	6.38	3.19	(14) .56	(2) .50-13UNC-2B	15.38	20.38	415
12	12x12	.627	.341	.184	.620	32	2.50	.75	17.00	28.38	14.88	12.25	11.88	.56	1.94	1.75	.50 x .25 x 2.62	19.00	17.00	12.00	(8) 1.00	(4) .88-9UNC-2B	16.75	12.00	1.00	7.38	3.69	(14) .56	(2) .50-13UNC-2B	16.38	20.38	580
14	15x13	1.096	.682	.208	1.089	30	3.00	.75	20.00	29.62	15.38	12.75	12.38	.56	2.19	2.00	.50 x .25 x 2.62	21.00	18.75	13.00	(8) 1.12	(4) 1.00-8UNC-2B	18.00	13.00	1.00	8.00	4.00	(14) .56	(2) .50-13UNC-2B	18.00	20.38	750
16	17x15	1.664	.857	.332	1.656	30	3.50	1.0	22.00	32.75	17.31	13.94	13.56	.62	2.44	2.25	.62 x .31 x 3.38	23.50	21.25	15.00	(12) 1.12	(4) 1.00-8UNC-2B	20.00	15.00	1.00	9.00	4.50	(14) .69	(2) .62-11UNC-2B	19.00	21.38	900
18	19x17	2.327	1.239	.602	2.313	28	3.50	1.0	24.00	34.75	18.31	14.94	14.56	.62	2.44	2.25	.62 x .31 x 3.38	25.00	22.75	17.00	(12) 1.25	(4) 1.12-7UNC-2B	22.00	17.00	1.00	10.00	5.00	(14) .69	(2) .62-11UNC-2B	19.94	21.38	950
20	21x19	2.982	1.594	.777	2.978	28	4.00	1.5	26.00	38.62	20.31	16.81	16.44	.62	2.94	2.75	.75 x .38 x 3.50	27.50	25.00	19.00	(16) 1.25	(4) 1.12-7UNC-2B	25.50	19.00	1.25	11.50	5.75	(14) .81	(2) .75-10UNC-2B	22.00	25.75	1,450
22	23x21	4.042	2.201	.978	4.037	26	5.00	1.5	28.00	40.62	21.31	17.81	17.44	.62	2.94	2.75	.75 x .38 x 3.50	29.75	27.25	21.00	(16) 1.38	(4) 1.25-7UNC-2B	27.50	21.00	1.25	12.50	6.25	(14) .81	(2) .75-10UNC-2B	23.00	25.75	1,520
24	25x23	5.314	2.869	1.305	5.308	24	5.00	1.5	30.00	42.62	22.31	18.81	18.44	.62	2.94	2.75	.75 x .38 x 3.50	32.00	29.50	23.00	(16) 1.38	(4) 1.25-7UNC-2B	29.50	23.00	1.25	13.50	6.75	(14) .81	(2) .75-10UNC-2B	24.06	25.75	1,600

SPECIFICATIONS ARE SUBJECT TO CHANGE WITHOUT NOTIFICATION

- NOTES:**
1. VALVE HOUSINGS ARE CAST OF IRON OR ALUMINUM; FABRICATED OF STEEL OR STAINLESS STEEL. ALL ROTORS ARE FABRICATED OF STEEL OR STAINLESS STEEL.
 2. VALVE HOUSINGS ARE AVAILABLE WITH ANY COMBINATION OF SQUARE OR ROUND INLET AND OUTLET. ROUND FLANGES MATCH 150# ANSI DRILLING.
 3. STANDARD HOUSINGS ARE DESIGNED FOR 15 PSI (MAX) INTERNAL & DIFFERENTIAL @ 250 DEGREES F.
 4. INSPECTION DOOR IS OPTIONAL AND WILL BE FURNISHED ONLY WHEN SPECIFIED.
 5. END PLATES AND INSPECTION DOOR O-RINGS ARE OPTIONAL AND WILL BE FURNISHED ONLY WHEN SPECIFIED.
 6. AIR PURGE CONNECTIONS 1/8" NPT WITH BRASS LANTERN RINGS ARE OPTIONAL AND WILL BE FURNISHED ONLY WHEN SPECIFIED.
 7. VENT WITH SCH 10 PIPE IS OPTIONAL AND WILL BE FURNISHED ONLY WHEN SPECIFIED. VENT CONNECTION WILL CHANGE ROTOR ROTATION TO COUNTER-CLOCKWISE.

GENERAL TOLERANCES	
UNLESS OTHERWISE SPECIFIED THE FOLLOWING SHALL APPLY	
MACHINING - .XX= .02 .XXX= .005 ANGLE= .50°	SURFACE ROUGHNESS HEIGHT 63 MICRONS OR LESS
FABRICATION - UNDER 6" 6 TO 24" 24 TO 60" OVER 60"	± .06 ± .12 ± .19 ± .25
UNLESS OTHERWISE SPECIFIED DIMENSIONS ARE IN INCHES	

REV. NO.	DESCRIPTION	DATE	BY
REVISIONS			
CUSTOMER			
CUST. NO.			
YOUNG ORDER NO.			
TITLE			
YOUNG INDUSTRIES MODEL 'LH' ROTARY VALVE, SIZE 6" - 24", CLASS 15 WITH PARALLEL SHAFT DRIVE, SHROUDED ROTOR STANDARD DIMENSION SHEET			
THE YOUNG INDUSTRIES, INC. MUNCY, PENNSYLVANIA 17756 TELEPHONE: 570-546-3165			
DRAWN BY: BMF		DATE DRAWN: 3/21/16	
CHECKED BY:		SCALE: 1:3	
DRAWING NUMBER		REV:	

S-4-6397