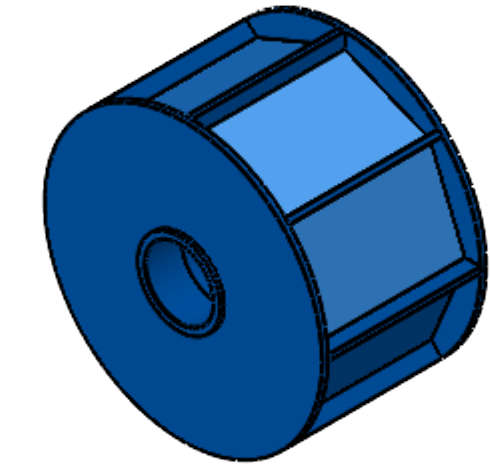
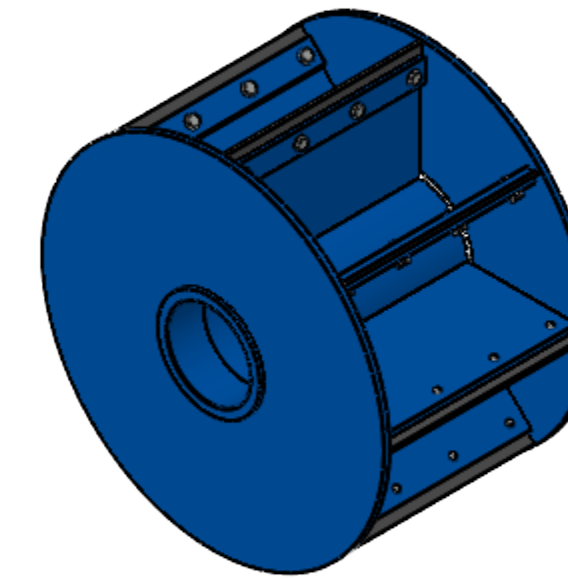


TYPE 'AS' ROTOR

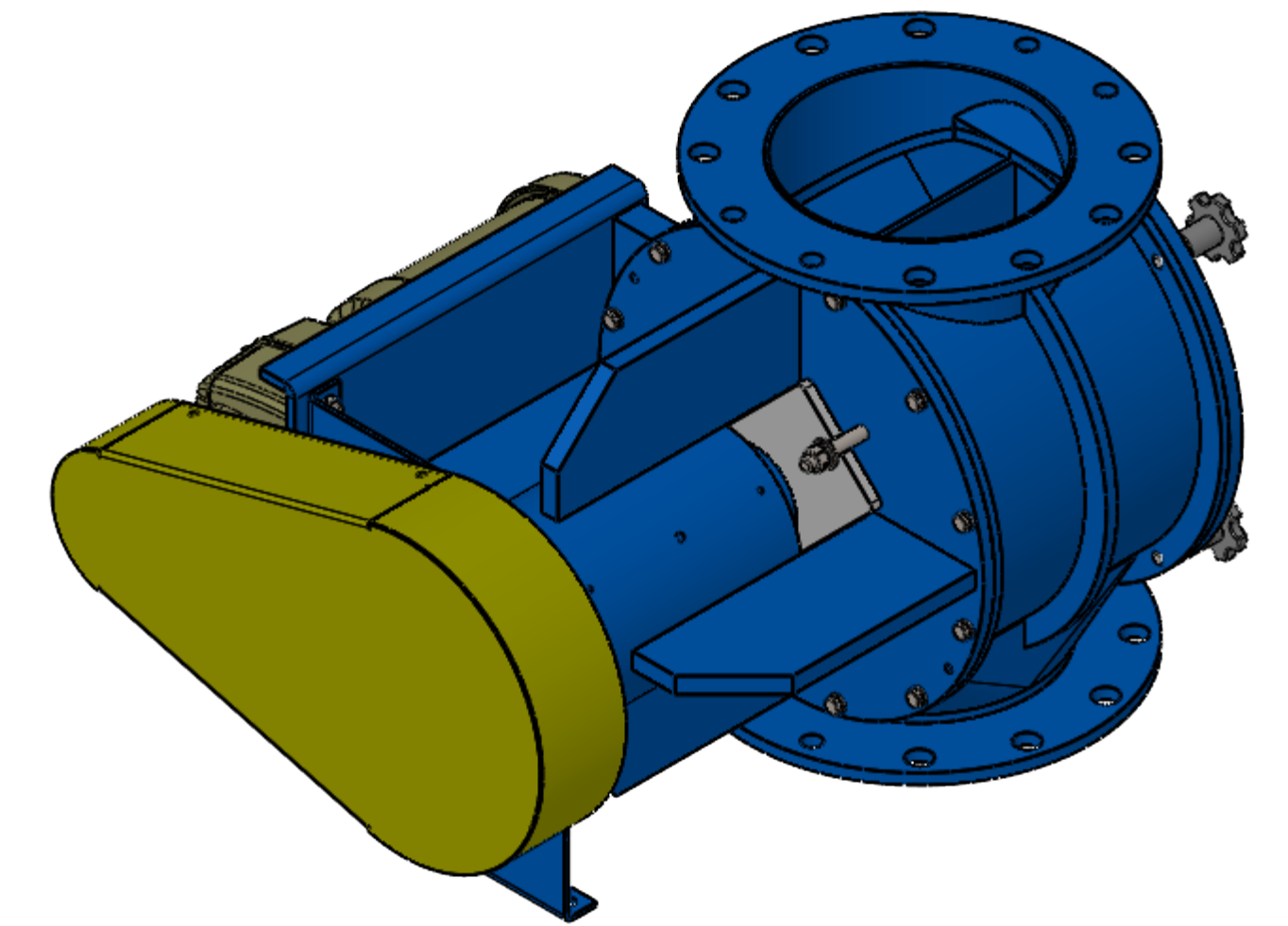


TYPE 'CS' ROTOR

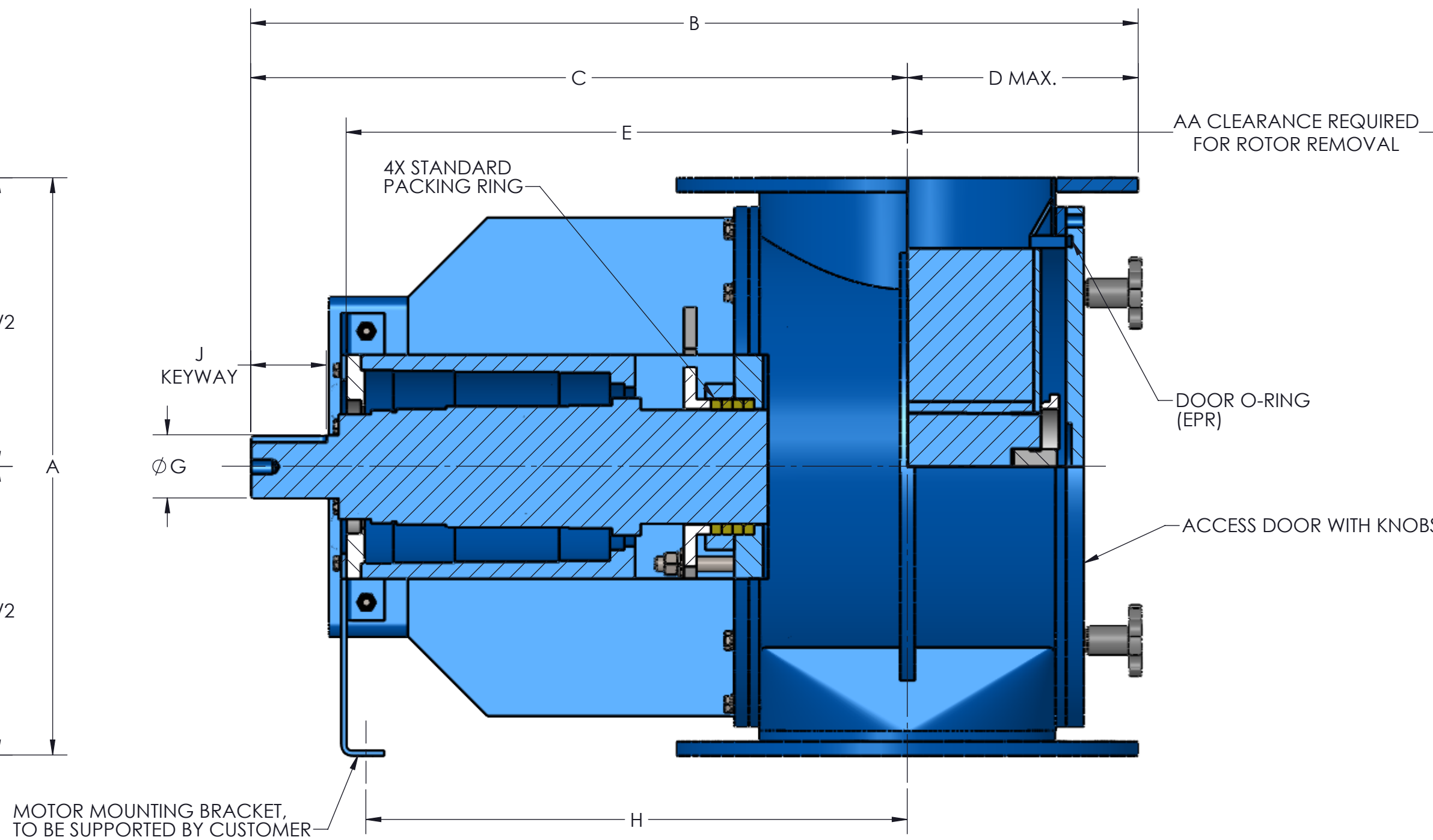
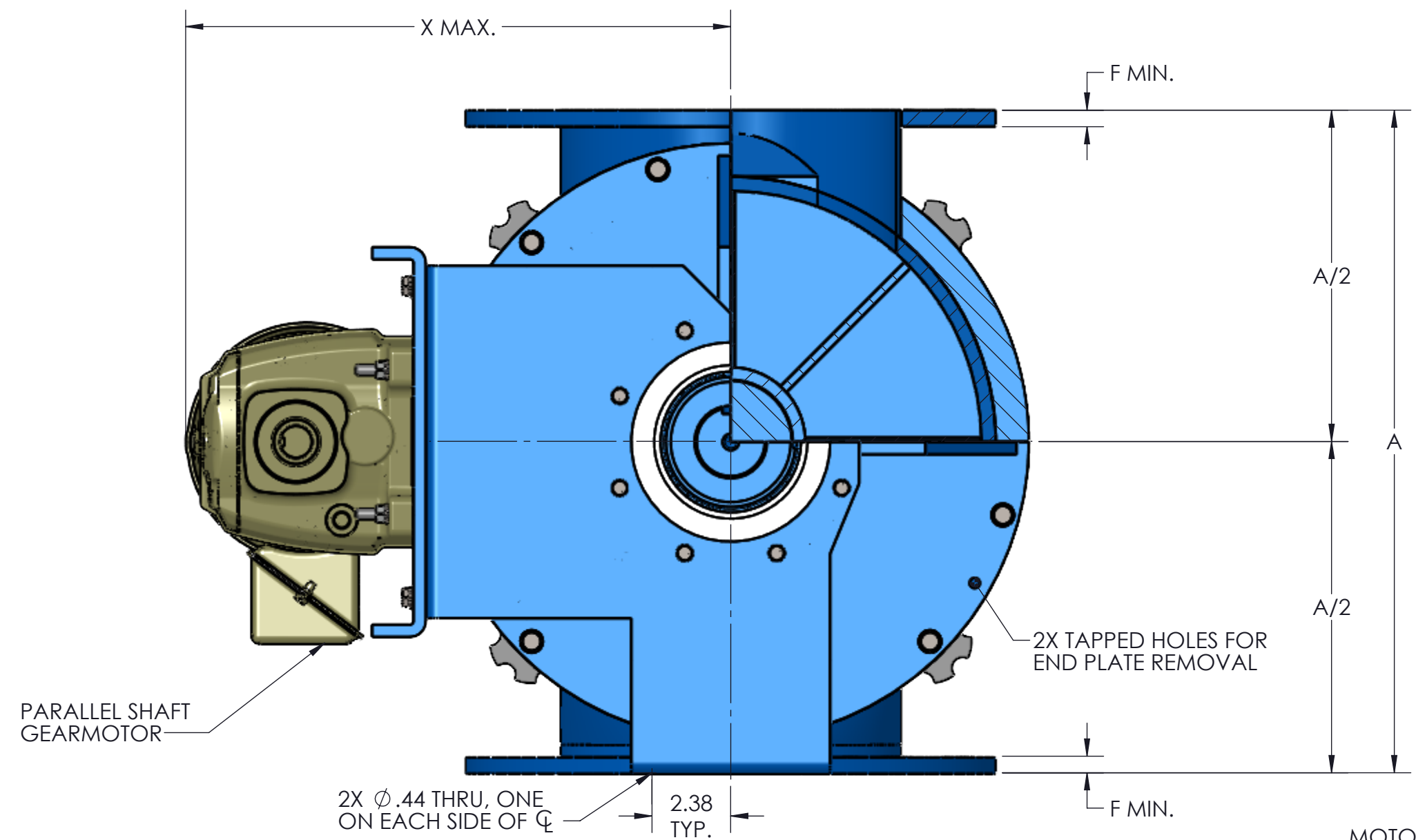
ROTOR SIZES: 4" - 12" 8 VANES  
14" - 24" 12 VANES



TYPE 'DS' ROTOR



TOTALLY ENCLOSED OSHA DESIGNED CHAIN GUARD  
TOTALLY ENCLOSED CHAIN DRIVE INCLUDES:  
DRIVE SPROCKET  
VALVE SPROCKET  
ROLLER CHAIN



- NOTES:
1. VALVE HOUSINGS ARE CAST OF IRON, ALUMINUM, STEEL OR STAINLESS STEEL; OR FABRICATED OF STEEL OR STAINLESS STEEL. ALL ROTORS ARE FABRICATED OF STEEL OR STAINLESS STEEL.
  2. VALVE HOUSINGS ARE AVAILABLE WITH ANY COMBINATION OF SQUARE OR ROUND INLET AND OUTLET. USE ROUND OUTLET WITH ANY FREE FLOWING MATERIAL. ROUND FLANGES MATCH 150# ANSI DRILLING.
  3. HOUSINGS ARE DESIGNED FOR 15 PSIG @ 250 DEGREES F.
  4. VALVES ARE DESIGNED FOR 15 PSIG DIFFERENTIAL PRESSURE ACROSS THE ROTOR.
  5. DOORS ON SIZE 12 & 14 VALVES ARE HINGED

REV. NO.	DESCRIPTION	DATE	BY
REVISIONS			

CUSTOMER:  
CUSTOMER PO NUMBER:  
YOUNG JOB NUMBER:  
TITLE  
YOUNG INDUSTRIES MODEL 'QC-HC' ROTARY VALVE, SIZE 4"-10" CLASS 15 W/ PARALLEL SHAFT DRIVE, SHROUDED ROTOR STANDARD DIMENSION SHEET



DRAWN BY: MEA DATE: 07/23/24  
CHECKED BY: SCALE=1:4  
DRAWING NUMBER: D-21404-06 SHEET 1 OF 1 REV: 00

SIZE	ROTOR DIA. X LG.	ROTOR CAP (CU. FT/REV)				STD. RPM	STD. HP	A	B	C	D	E	F	G	H	J	K	L	M	N	P	Q	R	S	T	U	V	W	X	AA	WEIGHT (C/S)	ROTOR WEIGHT	DOOR WEIGHT
		AS	BS	CS	DS																												
4	6 X 3.50	.0391	.0274	.0129	.0339	38	1/2	10.00	21.25	16.75	4.50	13.38	.31	1.19	12.69	.25 X .12 X 2.62	9.00	7.50	4.00	(8) .75	N/A	7.50	4.00	.62	3.75	3.13	(6) .56	(2) .50-13UNC-2B	11.74	12.31	255	20	10
5	8 X 4.50	.0964	.0642	.0440	.101	38	1/2	12.00	-	-	-	-	.44	1.44	-	.38 X .19 X 2.62	10.00	8.50	5.00	(8) .88	(4) .75-10UNC-2B	8.50	5.00	.62	4.25	3.63	(6) .56	(2) .50-13UNC-2B	-	14.50	300	25	16
6	10 X 5.50	.194	.124	.0795	.203	32	1/2	14.00	26.00	19.88	5.50	16.56	.44	1.94	15.88	.50 X .25 X 2.62	11.00	9.50	6.00	(8) .88	(4) .75-10UNC-2B	9.50	6.00	.62	4.75	4.13	(6) .56	(2) .50-13UNC-2B	13.78	17.06	325	30	23
8	12 X 7.25	.366	.214	.115	.389	32	3/4	17.00	28.00	21.25	6.75	17.75	.44	1.94	17.06	.50 X .25 X 2.62	13.50	11.75	8.00	(8) .88	(4) .75-10UNC-2B	11.50	8.00	.62	5.75	2.56	(14) .56	(2) .50-13UNC-2B	14.78	20.31	455	40	31
10	15 X 9.25	.762	.507	.154	.811	32	3/4	20.00	30.75	22.75	8.00	19.44	.44	2.19	18.75	.50 X .25 X 2.62	16.00	14.25	10.00	(12) 1.00	(4) .88-9UNC-2B	14.75	10.00	1.00	7.38	3.19	(14) .56	(2) .50-13UNC-2B	16.45	24.75	585	75	45

GENERAL TOLERANCES  
UNLESS OTHERWISE SPECIFIED THE FOLLOWING SHALL APPLY  
MACHINING - .XX - .02 .XXX - .005 ANGLES - 30°  
SURFACE ROUGHNESS HEIGHT .63 MICRONS OR LESS  
FABRICATION - UNDER 6 6 TO 24 24 TO 60 OVER 60  
± .06 ± .12 ± .19 ± .25  
UNLESS OTHERWISE SPECIFIED DIMENSIONS ARE IN INCHES.  
UNLESS SPECIFIED DIMENSIONS & TOLERANCES INTERPRETED PER ASME Y14.5-2009

