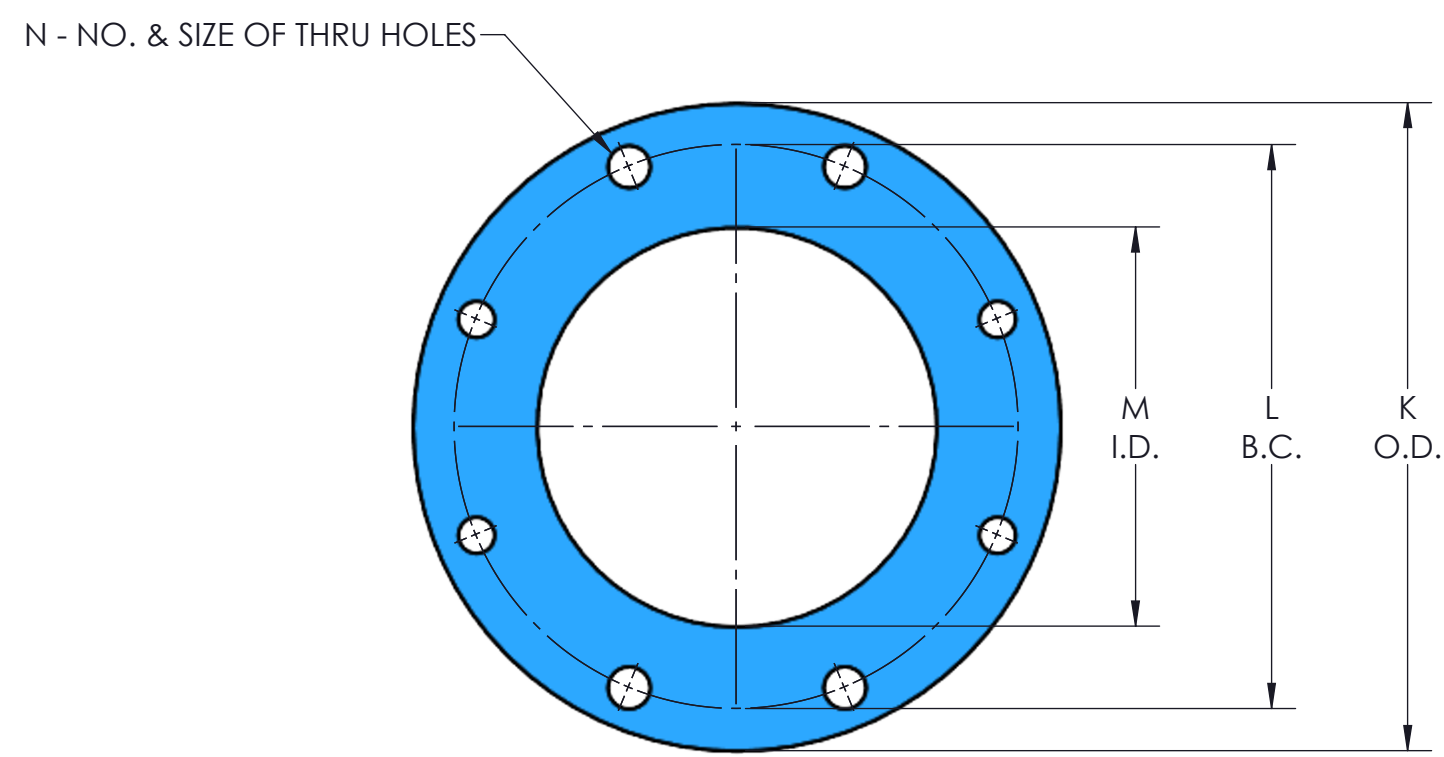
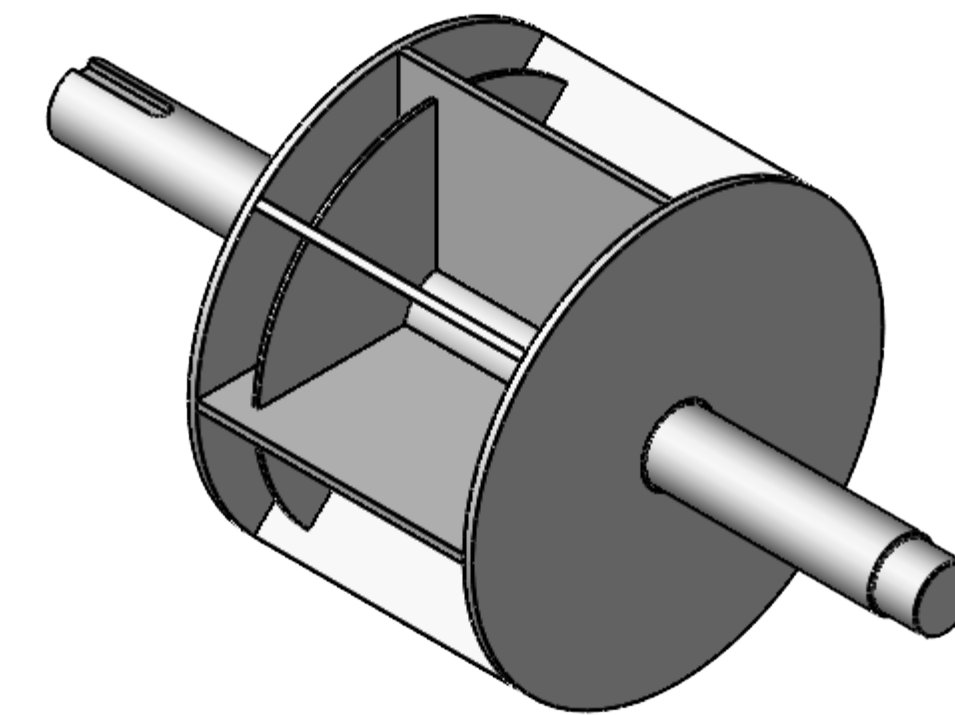


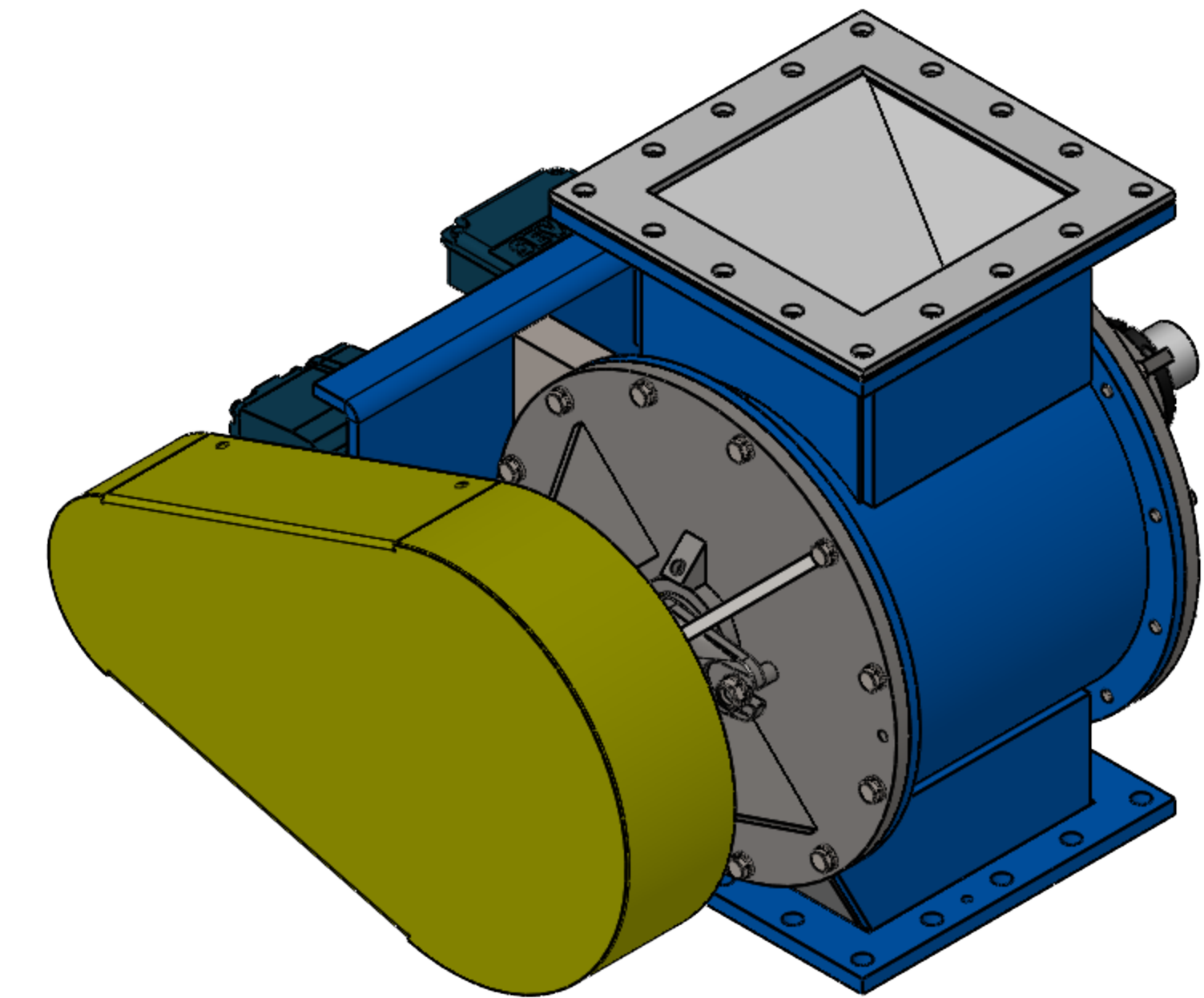
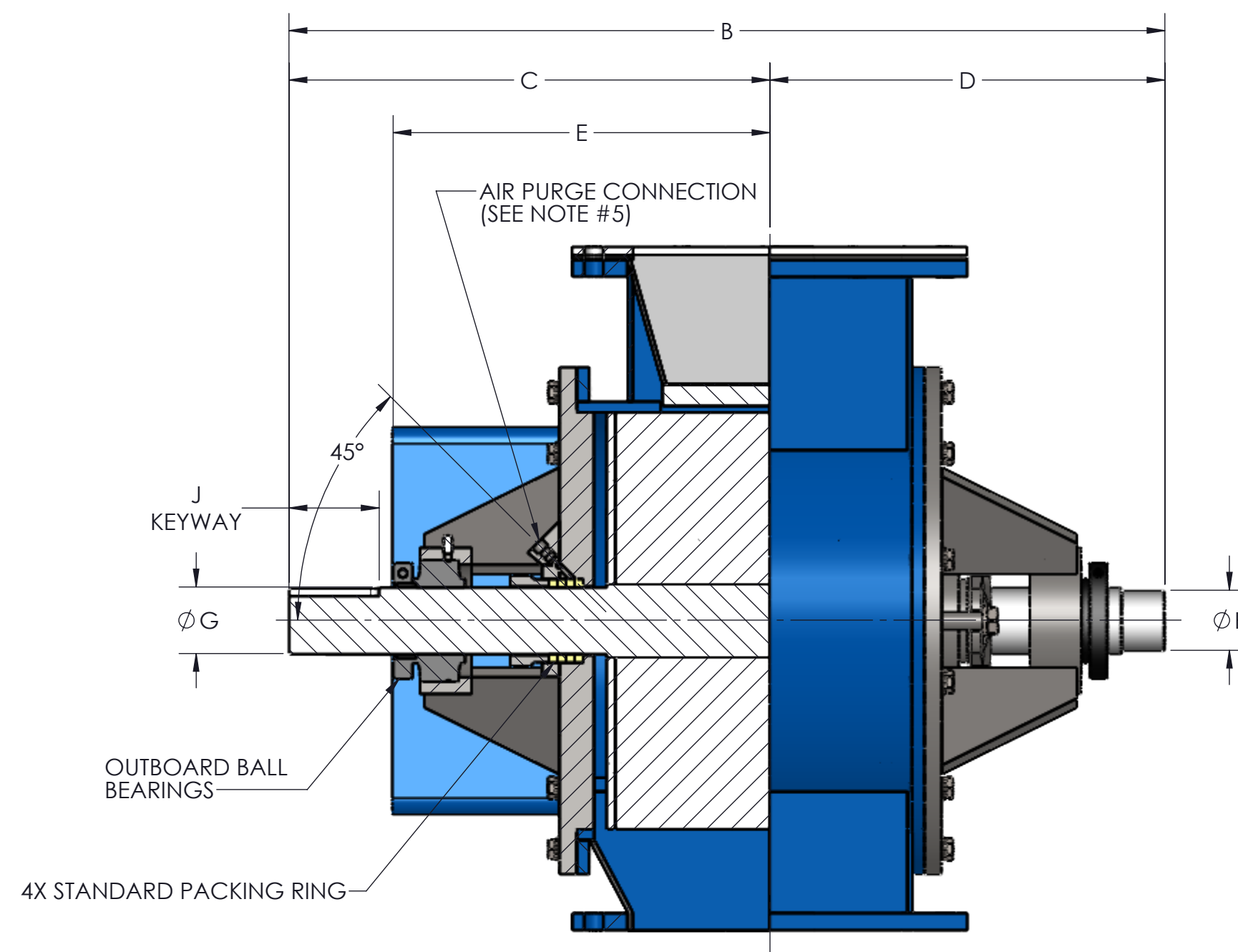
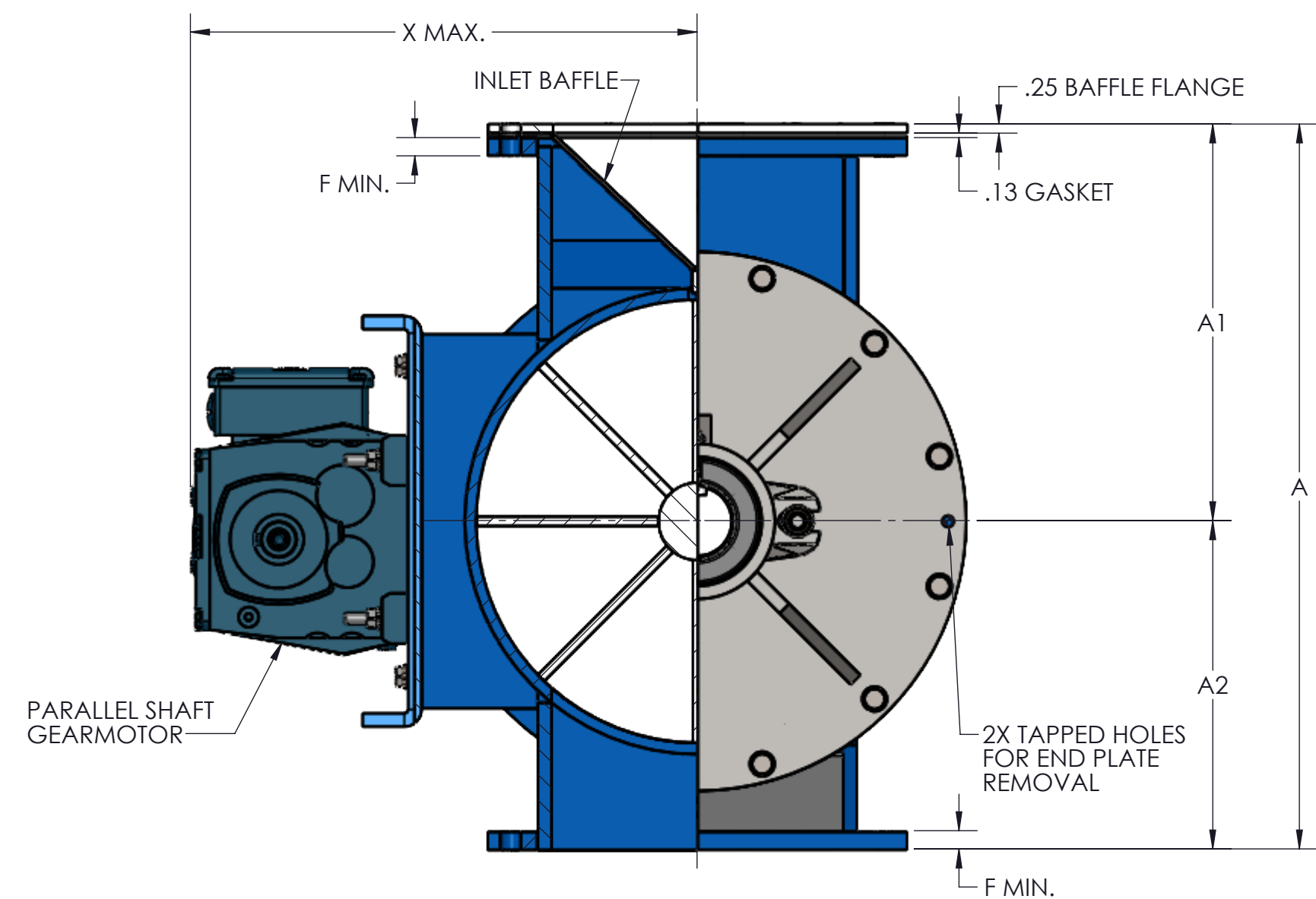
TOTALLY ENCLOSED OSHA DESIGNED CHAIN GUARD
 TOTALLY ENCLOSED CHAIN DRIVE INCLUDES:
 VALVE SPROCKET
 DRIVE SPROCKET
 ROLLER CHAIN



ROUND FLANGE DETAIL
(SEE NOTE #2)



'AS' ROTOR



SIZE	ROTOR DIA. X LG.	'AS' ROTOR CAP. (CU. PER REV.)	A	A1	A2	B	C	D	E	F	G	H	J	K	L	M	N	Q	R	S	T	U	V	X	WEIGHT (C/S)
4	6 X 4	.050	11.38	5.88	5.50	20.75	11.69	9.06	8.69	.31	1.44	1.25	.38 X .19 X 2.62	9.00	7.50	4.00	(8) .75	7.50	4.00	.62	3.13	N/A	(8) .56	13.31	225
5	8 X 5	.118	14.00	7.38	6.63	21.63	12.06	9.56	9.06	.44	1.44	1.25	.38 X .19 X 2.62	10.00	8.50	5.00	(8) .88	8.50	5.00	.62	3.63	N/A	(8) .56	14.31	290
6	10 X 6	.228	16.75	8.88	7.88	23.50	13.00	10.50	10.00	.44	1.94	1.75	.50 X .25 X 2.62	11.00	9.50	6.00	(8) .88	9.50	6.00	.62	4.13	N/A	(8) .56	15.38	350
8	12 X 8	.425	19.75	10.88	8.88	25.50	14.00	11.50	11.00	.44	1.94	1.75	.50 X .25 X 2.62	13.50	11.75	8.00	(8) .88	11.50	8.00	.62	5.13	2.56	(16) .56	16.38	445
10	15 X 10	.867	24.00	13.38	10.63	27.81	15.06	12.75	12.06	.44	2.19	2.00	.50 X .25 X 2.62	16.00	14.25	10.00	(12) 1.00	14.75	10.00	1.00	6.38	3.19	(16) .56	18.00	580
12	17 X 12	1.372	26.63	15.38	11.25	31.00	17.06	13.94	13.31	.56	2.44	2.25	.62 X .31 X 3.38	19.00	17.00	12.00	(12) 1.00	16.75	12.00	1.00	7.38	3.69	(16) .56	19.00	730

- NOTES:
 1. VALVE HOUSINGS ARE FABRICATED OF STEEL OR STAINLESS STEEL. ALL ROTORS ARE FABRICATED OF STEEL OR STAINLESS STEEL.
 2. VALVE HOUSINGS ARE AVAILABLE WITH A SQUARE OR ROUND INLET AND OUTLET. ROUND FLANGES MATCH 150# ANSI DRILLING.
 3. STANDARD HOUSINGS ARE DESIGNED FOR 15 PSI (MAX) INTERNAL & DIFFERENTIAL @ 250 DEGREES F.
 4. END PLATE O-RINGS ARE OPTIONAL AND WILL BE FURNISHED ONLY WHEN SPECIFIED.
 5. AIR PURGE CONNECTIONS 1/8" NPT WITH BRASS LANTERN RINGS ARE OPTIONAL AND WILL BE FURNISHED ONLY WHEN SPECIFIED.

GENERAL TOLERANCES UNLESS OTHERWISE SPECIFIED THE FOLLOWING SHALL APPLY	
MACHINING - XX=.02 XXX=.005 ANGLES - 30°	
SURFACE ROUGHNESS HEIGHT .63 MICRONS OR LESS	
FABRICATION - UNDER 6 6 TO 24 24 TO 60 OVER 60	
±.06 ±.12 ±.19 ±.25	
UNLESS OTHERWISE SPECIFIED DIMENSIONS ARE IN INCHES. UNLESS SPECIFIED DIMENSIONS & TOLERANCES INTERPRETED PER ASME Y14.5-2009	
3RD	

REV. NO.	DESCRIPTION	DATE	BY
REVISIONS			
CUSTOMER:			
CUSTOMER PO NUMBER:			
YOUNG JOB NUMBER:			
TITLE YOUNG INDUSTRIES MODEL 'RNHC' ROTARY VALVE, SIZE 4"-12", CLASS 15 W/ PARALLEL SHAFT DRIVE. STANDARD DIMENSION SHEET			
 YOUNG INDUSTRIES MUNCY, PENNSYLVANIA 17756 TELEPHONE: 570-546-3165			
DRAWN BY: MEA		DATE: 07/31/24	
CHECKED BY:		SCALE=1:4	
DRAWING NUMBER D-21404-21	SHEET 1 OF 1	REV: 00	