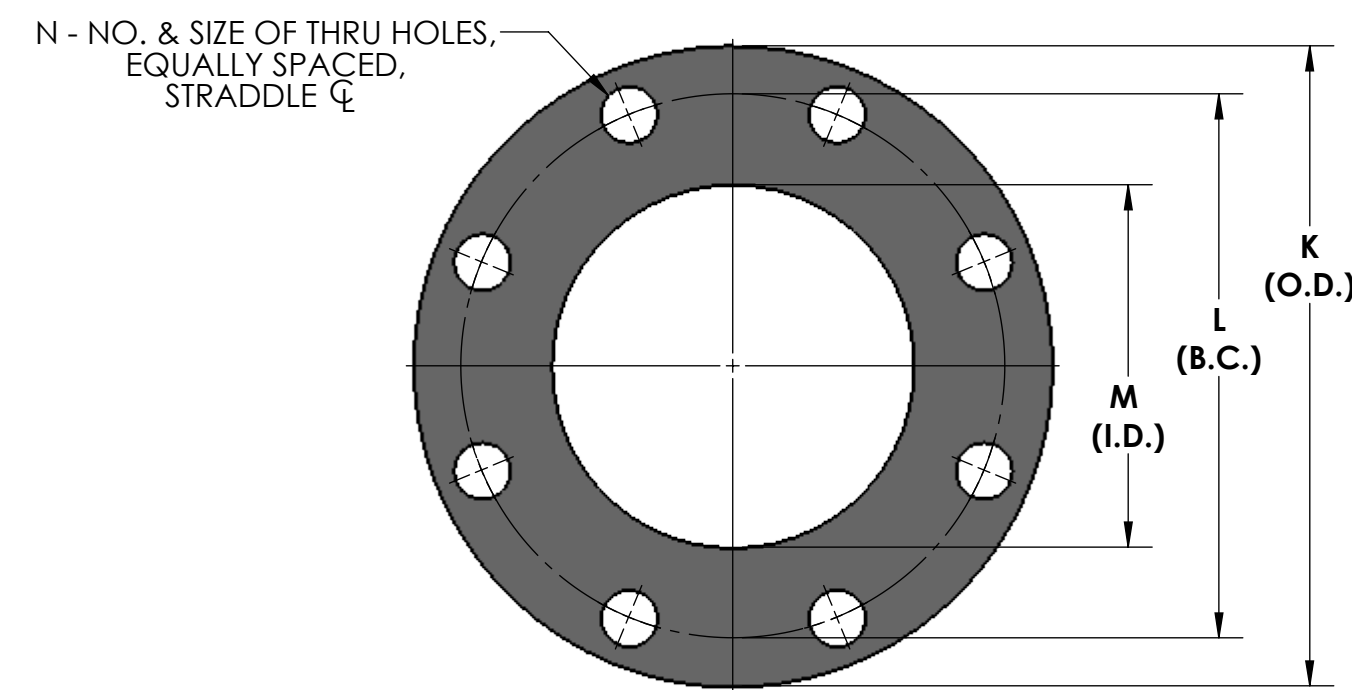
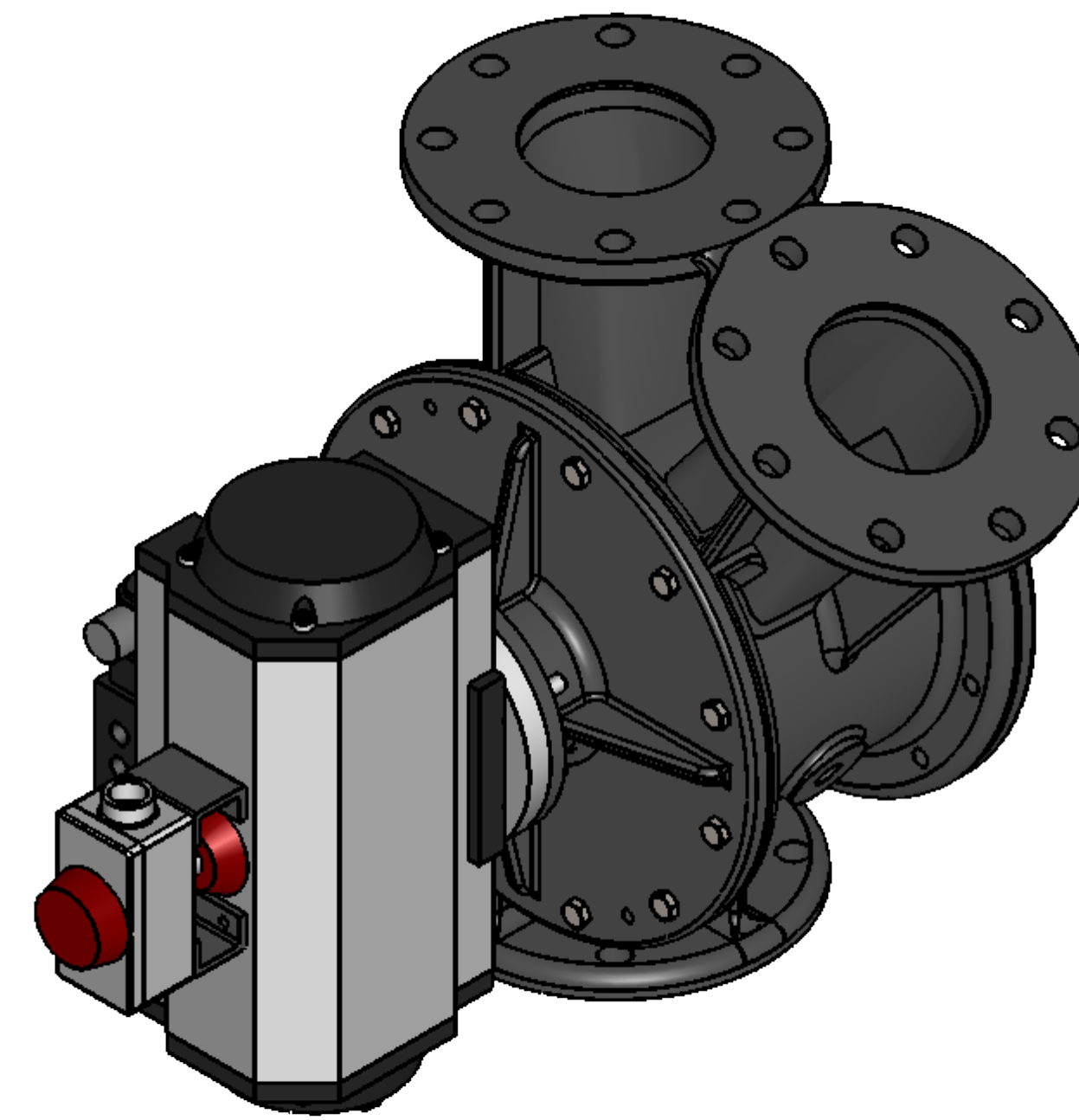
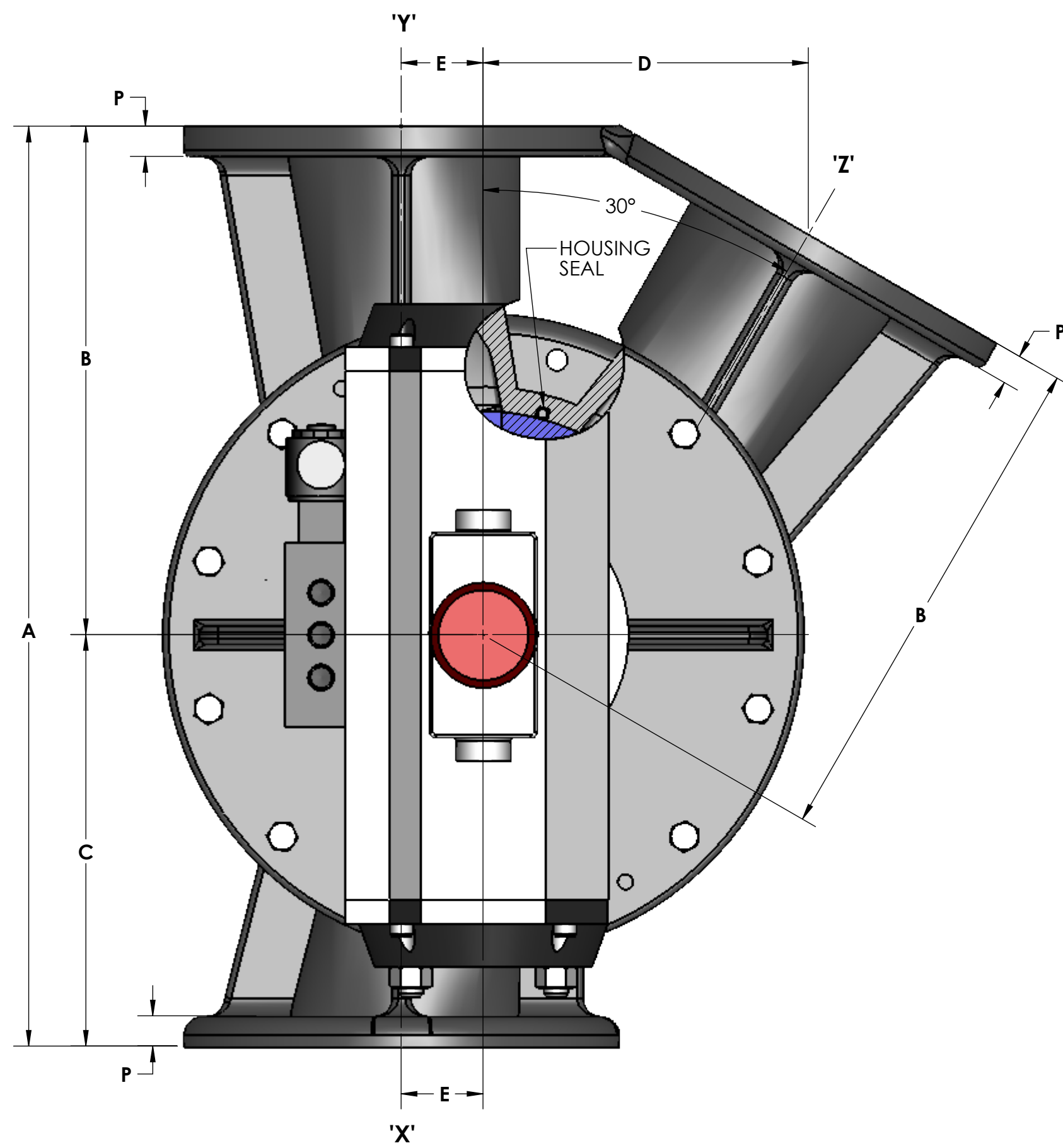


NOTES:

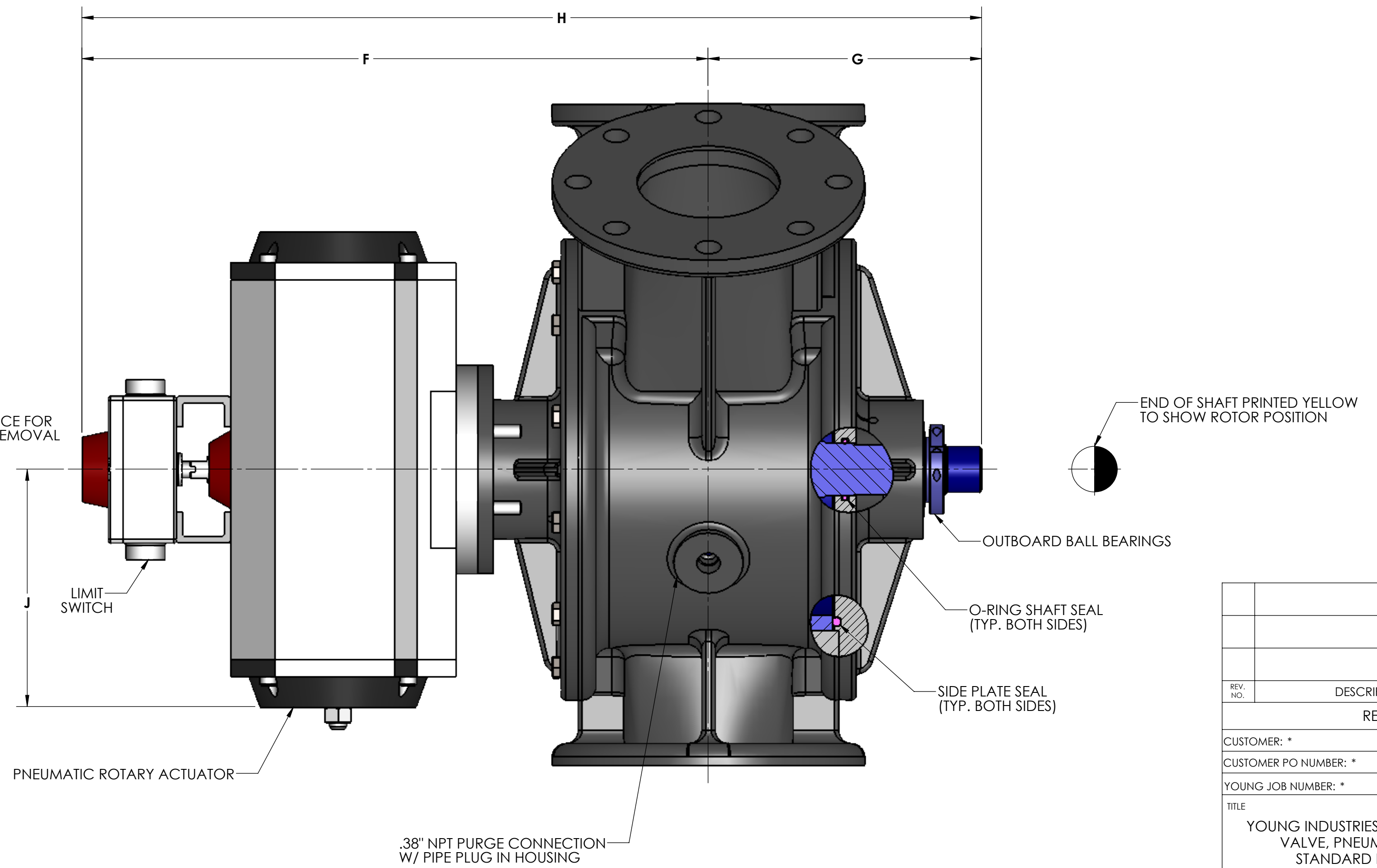
- HOUSING, SIDE PLATES AND ROTOR ARE OF CAST CONSTRUCTION. CASTINGS AVAILABLE IN IRON, ALUMINUM, STEEL AND STAINLESS STEEL.
- ALL VALVES ARE FURNISHED FLANGED. (STANDARD)
- VALVES ARE SUITABLE FOR 15 PSI DIFFERENTIAL, 250°F MAX.
- RIGHT HAND ASSEMBLY IS SHOWN WITH SIDE BRANCH (Z) ON RIGHT SIDE AND ACTUATOR ON NEAR SIDE. LEFT HAND ASSEMBLY IS WITH SIDE BRANCH (Z) ON LEFT SIDE AND ACTUATOR ON NEAR SIDE.



INLET & OUTLET FLANGE DETAIL
150# ANSI DRILLING



NOTE:
ALLOW CLEARANCE FOR SWITCH COVER REMOVAL



SIZE	A	B	C	D	E	F	G	H	J	L	M	N	P		WT. (LBS)
													C.I. - AL	S/S-STL	
2	14.00	7.19	6.81	4.50	1.06	16.06	5.69	24.62	3.88	4.75	2.12	(4) - .75	0.69	0.56	252
3	17.00	8.88	8.12	5.62	1.38	16.62	6.25	24.88	3.88	6.00	3.12	(4) - .75	0.75	0.62	352
4	19.00	10.50	8.50	6.69	1.69	18.25	6.94	25.19	4.75	7.50	4.12	(8) - .75	0.81	0.62	445
5	20.50	11.12	9.38	7.31	2.00	18.25	7.56	25.81	4.75	8.50	5.12	(8) - .88	0.88	0.69	545
6	22.25	11.88	10.38	7.94	2.31	19.44	8.12	27.56	4.75	9.50	6.12	(8) - .88	0.94	0.75	600
8	26.50	14.12	12.38	9.62	2.94	23.38	10.06	33.44	5.50	11.75	8.25	(8) - .88	1.06	0.88	925
10	31.00	16.25	14.75	11.25	3.62	24.50	11.25	35.75	5.50	14.25	10.25	(12) - 1	1.12	0.94	1268
12	36.25	19.12	17.12	13.41	4.44	27.69	12.94	40.63	5.62	17.00	12.25	(12) - 1	1.19	1.00	1668

UNIT WEIGHT
LBS

GENERAL TOLERANCES	
UNLESS OTHERWISE SPECIFIED THE FOLLOWING SHALL APPLY	
MACHINING - .XX= .02 .XXX= .005 ANGLE= .50°	SURFACE ROUGHNESS HEIGHT 63 MICRORINCHES OR LESS
FABRICATION - UNDER 6 6 TO 24 24 TO 60 OVER 60	± .06 ± .12 ± .19 ± .25
UNLESS OTHERWISE SPECIFIED DIMENSIONS ARE IN INCHES	

REV. NO.	DESCRIPTION	DATE	BY
REVISIONS			
CUSTOMER: *			
CUSTOMER PO NUMBER: *			
YOUNG JOB NUMBER: *			
TITLE			
YOUNG INDUSTRIES ROTARY PLUG DIVERTER VALVE, PNEUMATICALLY ACTUATED. STANDARD DIMENSION SHEET			
INDUSTRIES, INC.		17756	
MUNICIPALITY, PENNSYLVANIA		75704	
TELEPHONE: 570-546-3165			
DRAWN BY: BMF	DATE DRAWN: 5/30/17		
CHECKED BY:	SCALE=1:2.5		
DRAWING NUMBER	SHEET	REV:	
S-4-6329	1 OF 1		