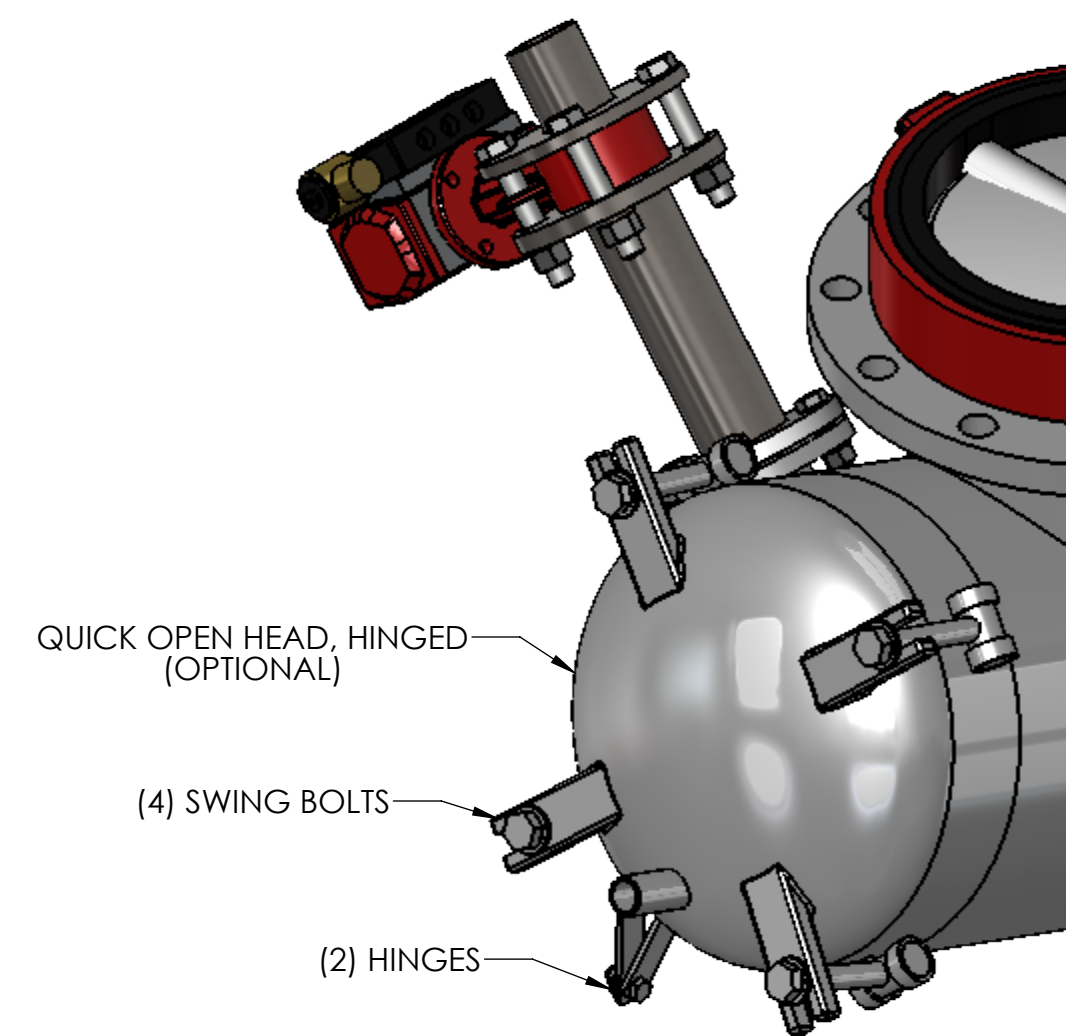
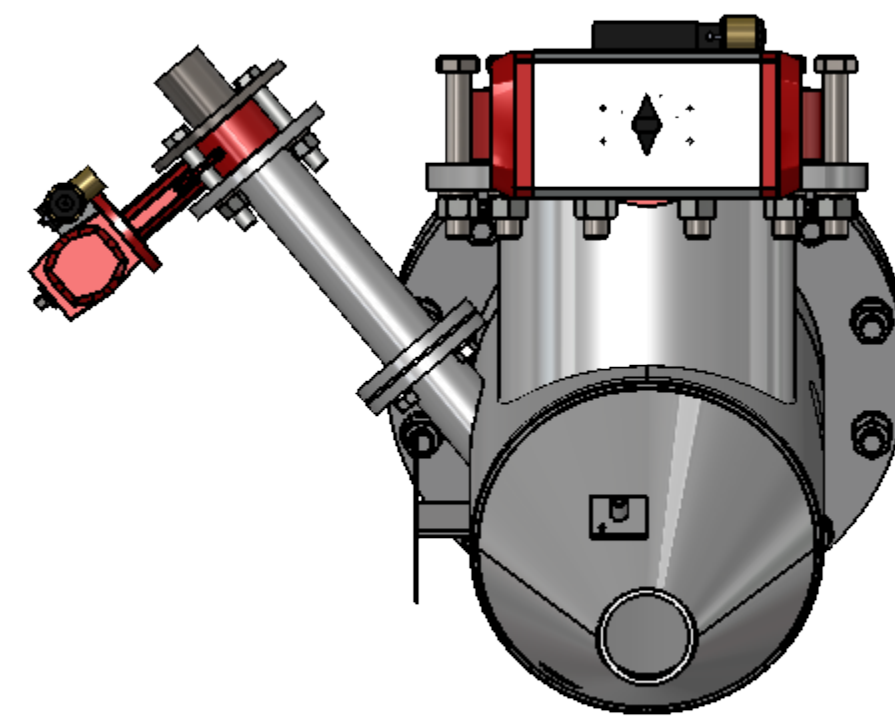


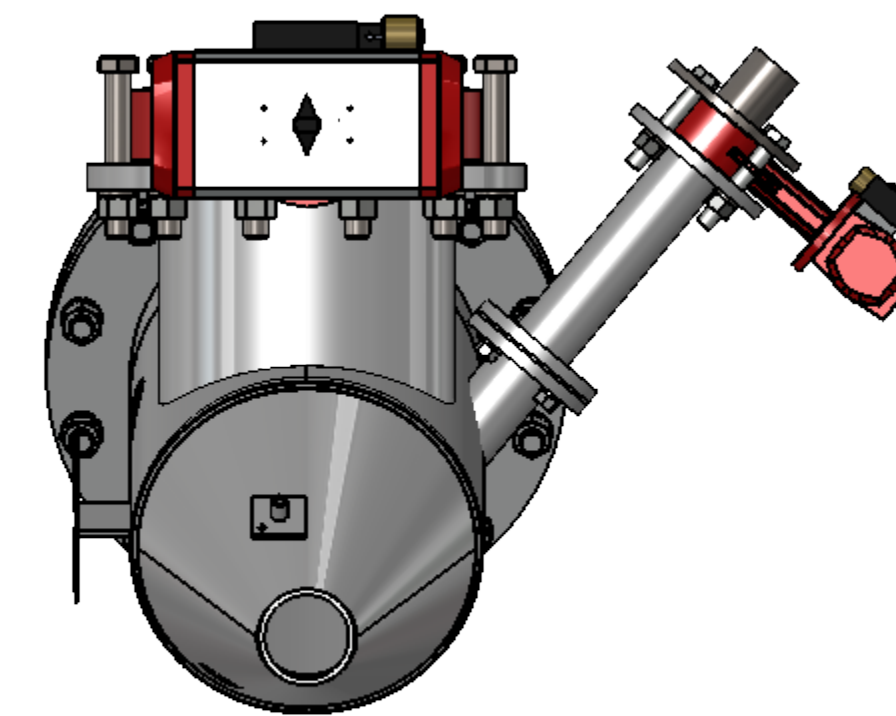
REMOVABLE FLANGED HEAD
(SEE NOTE NO. 3)



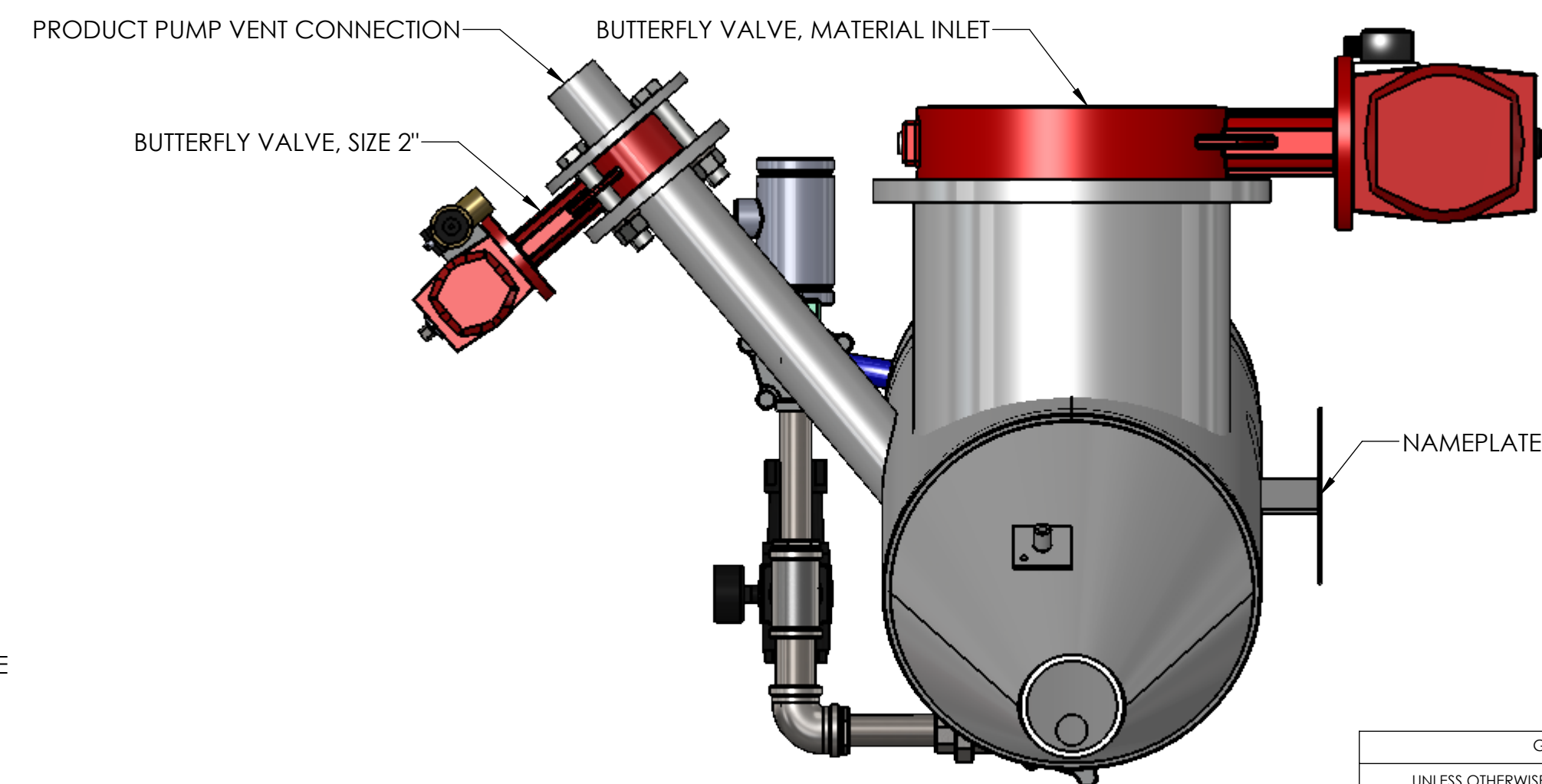
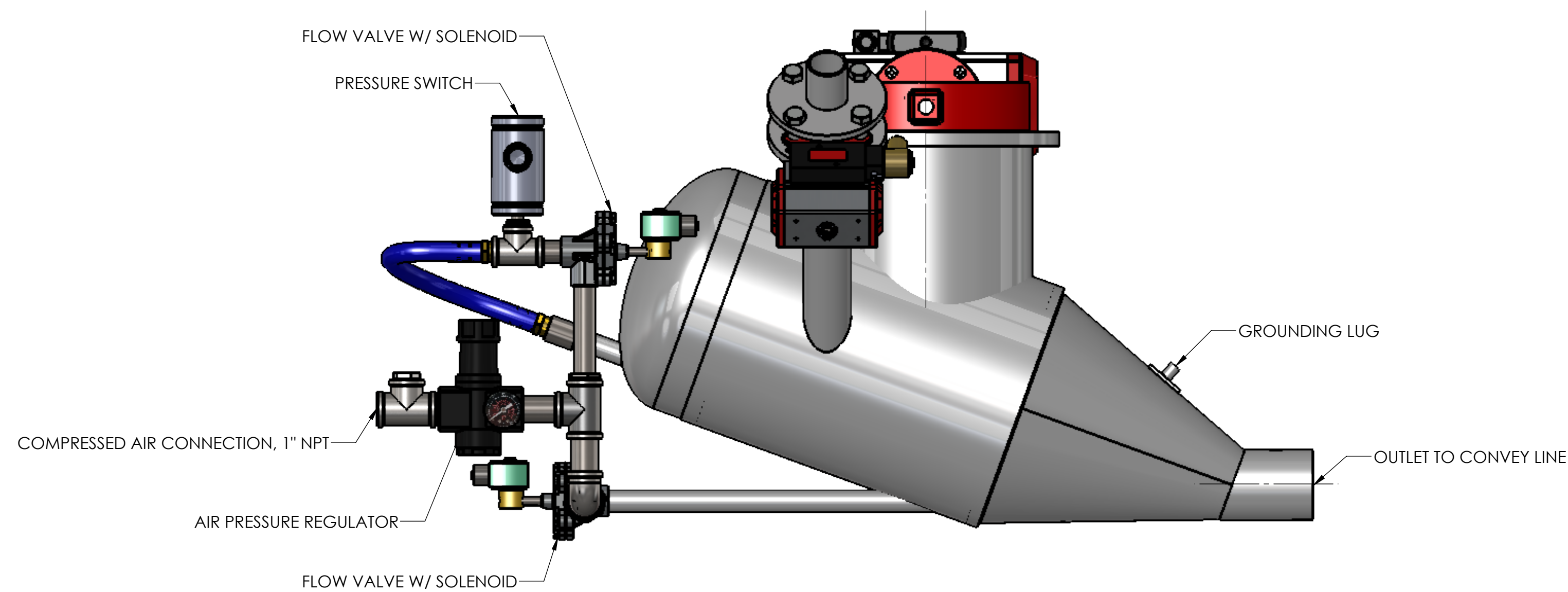
QUICK OPEN HEAD
(SEE NOTE NO. 3)



LEFT HAND ASSEMBLY
(SEE NOTE NO. 4)



RIGHT HAND ASSEMBLY
(SEE NOTE NO. 4)



MODEL NO.	INLET VALE SIZE	CONVEY LINE SIZE (PIPE)	MAX. CONVEY DISTANCE (FT.)	MIN. CYCLE TIME (SEC.)	AVERAGE CFM	MAX. CAPACITY (CU. FT./HR)
PI 206-50	6.00	2.00	500	4	50-80	125 *
PI 306-50	6.00	3.00	500	4	70-100	175 *
PI 208-125	8.00	2.00	400	10-15	100-130	175 *
PI 310-125	10.00	3.00	400	10-15	150-250	250 *

*CAPACITIES ARE ESTIMATED. ACTUAL CAPACITY CALCULATED BASED ON MATERIAL CHARACTERISTICS.

NOTES:

1. ALL HOUSINGS ARE DESIGNED FOR 150 PSIG AND ASME CODE 'UM' STAMPED.
2. PRODUCT PUMPS CAN BE SUPPLIED WITH THE CONICAL PORTION AND SHELL LINED WITH YOUNG INDUSTRIES TRANSFLOW® FLUIDIZATION MEDIA.
3. CONVEYING GAS PRESSURE SUPPLY TO BE BETWEEN 20 AND 40 PSIG. GAS SUPPLY PRESSURE TO OPERATE THE BUTTERFLY VALVES TO BE 80 PSIG MINIMUM.
4. PRODUCT PUMPS CAN BE SUPPLIED WITH THE VENT ORIENTATION AS A RIGHT OR LEFT HAND ASSEMBLY. SPECIFIED BY CUSTOMER.
5. PRODUCT PUMPS CAN BE SUPPLIED WITH REMOVABLE BOLTED ON HEAD OR HINGED HEAD W/ SWING BOLTS. SPECIFIED BY CUSTOMER.
6. PRODUCT PUMPS CAN BE SUPPLIED WITH AREA CLASSIFICATION OF NEMA 4, 7, 9 AND CURRENT OPTIONS OF 24 VDC OR 120 VAC. SPECIFIED BY CUSTOMER.
7. PRODUCT PUMPS CAN BE SUPPLIED WITH A CONTROL PANEL ONLY WHEN SPECIFIED BY CUSTOMER.
8. OTHER SIZES OF PRODUCT PUMPS ARE AVAILABLE UPON REQUEST.

MODEL NUMBER BREAKDOWN:

PI 206-50
 └─ CUBIC FEET HOLDING CAPACITY
 └─ INLET VALVE SIZE
 └─ NOMINAL CONVEY LINE SIZE
 └─ PUMP ORIENTATION

UNIT WEIGHT
LBS

GENERAL TOLERANCES	
UNLESS OTHERWISE SPECIFIED THE FOLLOWING SHALL APPLY	
MACHINING - .XX= .02 .XXX= .005 ANGLE= .50°	
SURFACE ROUGHNESS HEIGHT 63 MICRORINCHES OR LESS	
FABRICATION - UNDER 6 6 TO 24 24 TO 60 OVER 60	
± .06 ± .12 ± .19 ± .25	
UNLESS OTHERWISE SPECIFIED DIMENSIONS ARE IN INCHES	

REV. NO.	DESCRIPTION	DATE	BY
REVISIONS			
CUSTOMER:			
CUSTOMER PO NUMBER:			
YOUNG JOB NUMBER:			
TITLE YOUNG INDUSTRIES PRODUCT PUMP, MODEL 'PI' INCLUDED UNIT			
THE YOUNG INDUSTRIES, INC. HUNTSVILLE, PENNSYLVANIA 17756 TELEPHONE: 717-546-3165			
DRAWN BY: BMF		DATE DRAWN: 10/27/16	
CHECKED BY:		SCALE=1:5	
DRAWING NUMBER S-20993-01	SHEET 1 OF 1	REV:	