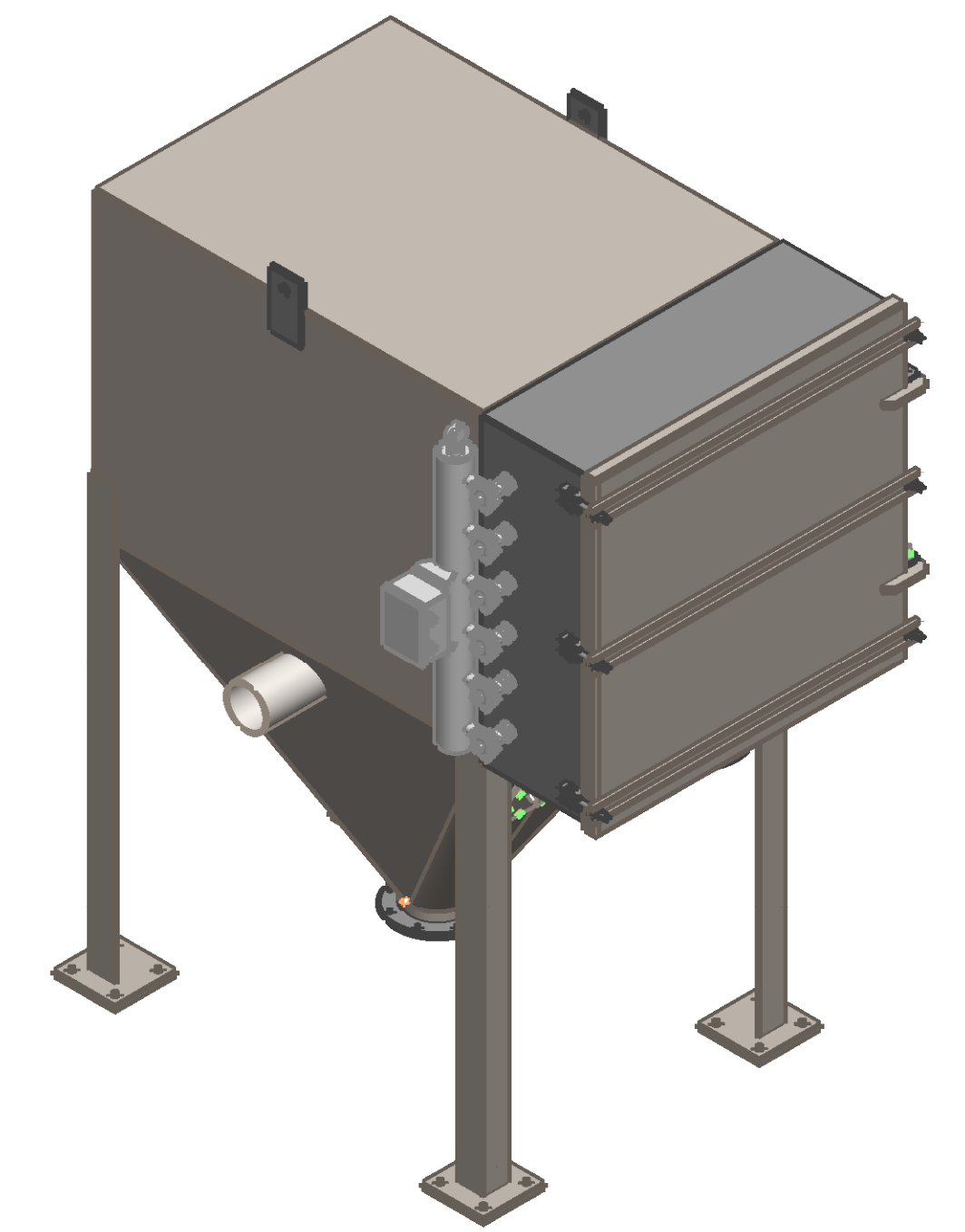


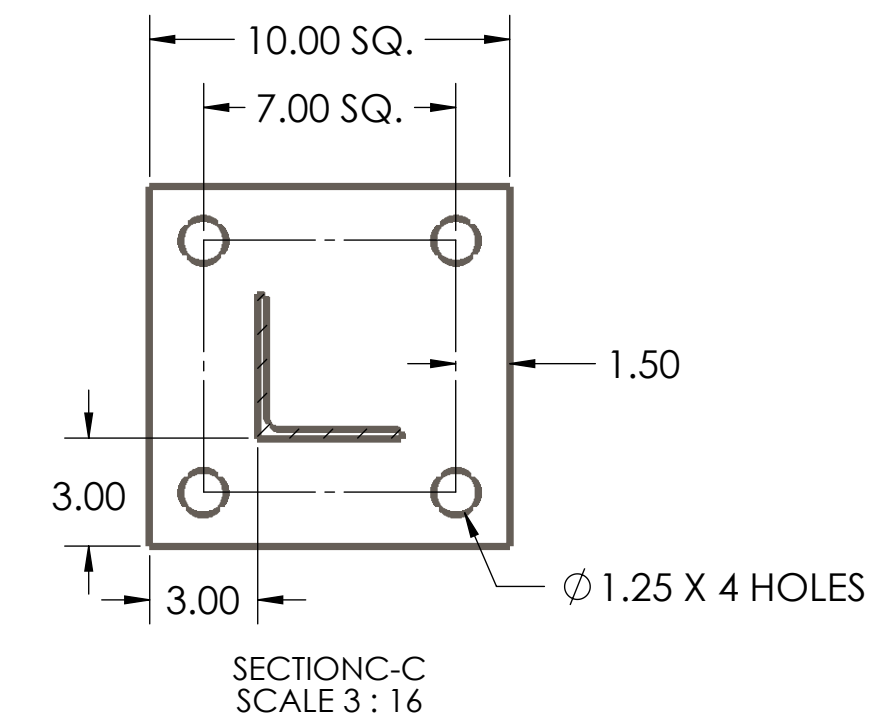
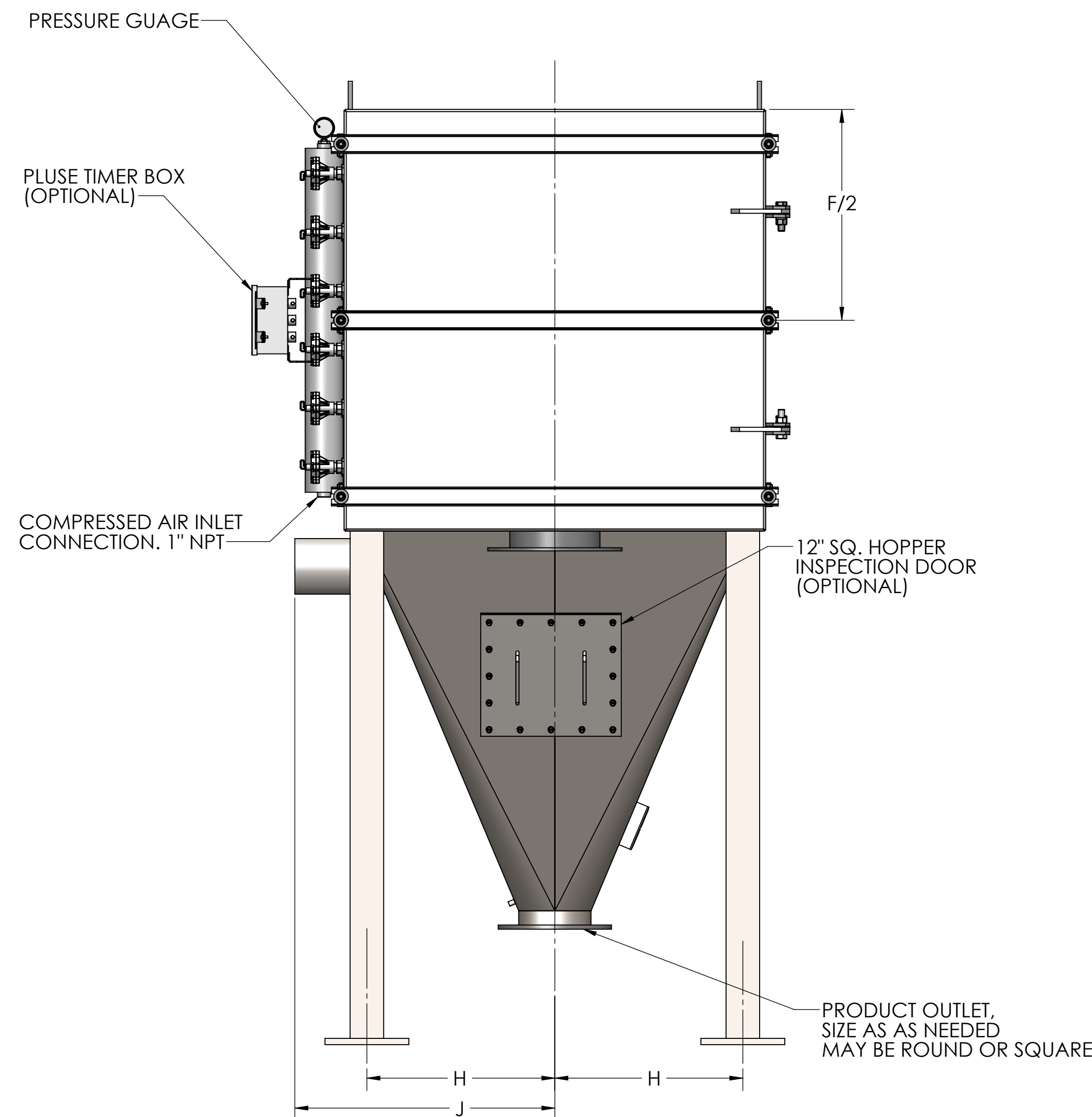
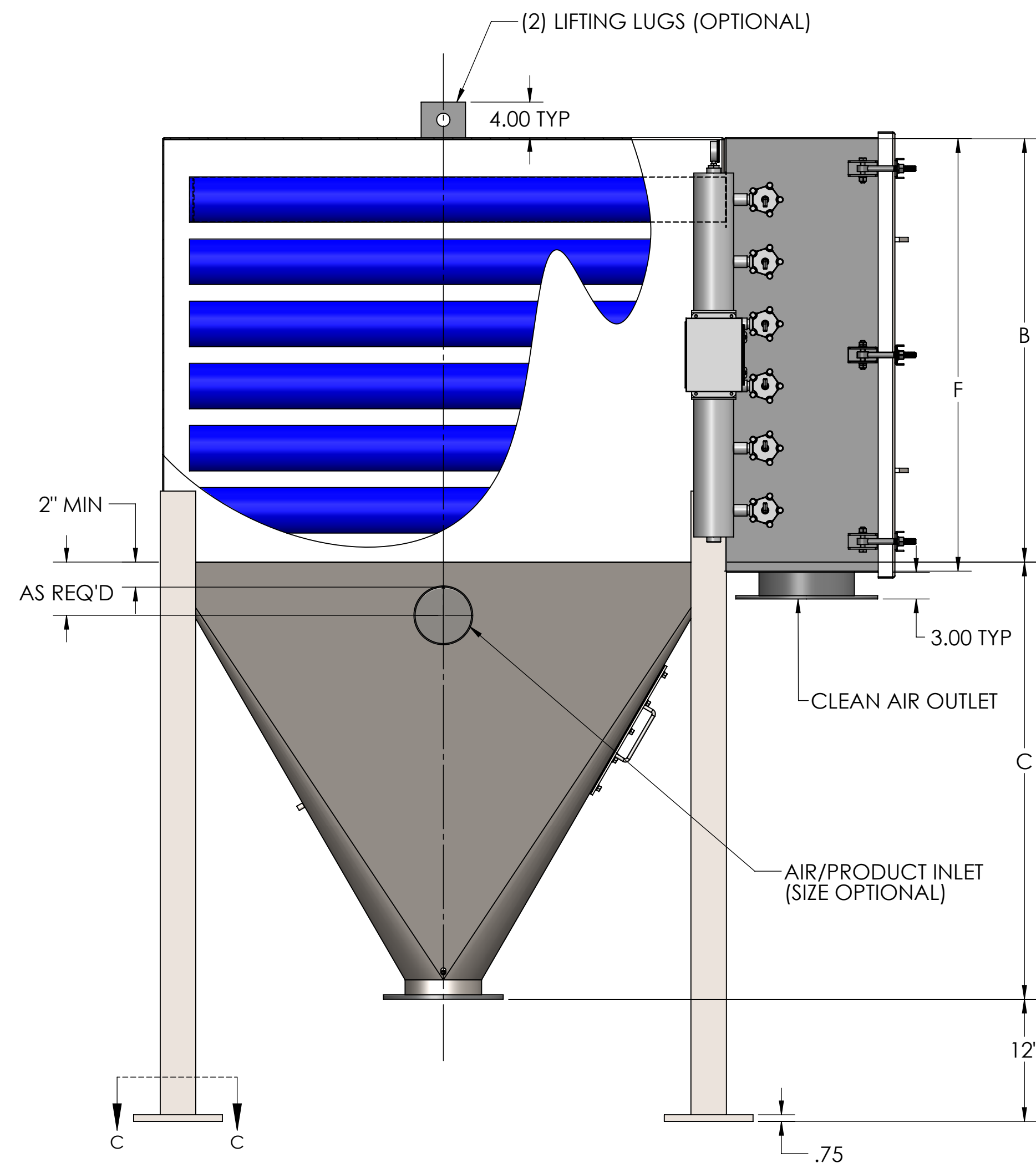
MODEL NUMBER EXAMPLE
 HM 48 - 25

↑ NUMBER OF TUBES
 ↑ LENGTH OF EACH TUBE
 ↑ SERIES

MODEL	CLOTH AREA SQ.FT.	NO. OF PLENUM DOORS	A	B	STANDARD DISCHARGE OPENING	C	D	E	F	G	H	J	K	L	M	N BOLT CIRCLE	COMPRESSED AIR REQ'D @ 90 P.S.I.G SCFM*	APPOX WT. LBS
HM 24	23		5'-8"	2'-9"		1'-8"	3'-1"	2'-3"		11 1/2"	10"	1'-6"	4 1/2"	11"	6.72"	9.50"	2	400
HM 36-9	35	1	6'-7"	2'-9"	6"	2'-7"	4'-1"	3'-3"	2'-0"	1'-5 1/2"								500
HM 48	47		7'-5"			3'-5"	5'-1"	4'-3"		1'-11 1/2"								600
HM 24	42		6'-4"	3'-3"	8"	1'-10"	3'-3"	2'-3"		11 1/2"	13"	1'-9"	7 1/4"	13.5"	8.72"	11.75"	4.4	500
HM 36-16	62	1	7'-0"	3'-3"		2'-6"	4'-3"	3'-3"	2'-6"	1'-5 1/2"								600
HM 48	83		7'-10"			3'-4"	5'-3"	4'-3"		1'-11 1/2"								700
HM 24	65		8'-1"	4'-3"	10"	2'-7"	3'-3"	2'-3"		11 1/2"	1'-7"	2'-3"	7 1/4"	16"	10.88"	14.25"	5.5	600
HM 36	98	1	8'-9"	4'-3"		2'-7"	4'-3"	3'-3"	3'-6"	1'-5 1/2"								700
HM 48-25	130		8'-9"	4'-3"		3'-3"	5'-3"	4'-3"		1'-11 1/2"								800
HM 60	163		9'-7"			4'-1"	6'-3"	5'-3"		2'-5 1/2"								950
HM 72	195		10'-5"			4'-11"	7'-3"	6'-3"		2'-11 1/2"								1150
HM 48	187	1	9'-3"	4'-9"	10"	3'-3"	5'-7 1/2"	4'-3"		1'-11 1/2"	1'-10"	2'-6"	8 1/4"	16"	10.88"	14.25"	6.6	900
HM 60-36	234		10'-1"			4'-11"	7'-7 1/2"	5'-3"	4'-0"	2'-5 1/2"								1050
HM 72	281		11"			4'-11"	7'-7 1/2"	6'-3"		2'-11 1/2"								1200
HM 48	255	2	9'-9"	5'-3"	12"	3'-3"	5'-9 1/2"	4'-3"		1'-11 1/2"	2'-1"	2'-9"	8 1/4"	19"	12"	17.00"	15.4	1000
HM 60-36	319		10'-5"			3'-11"	6'-9 1/2"	5'-3"	4'-6"	2'-5 1/2"								1250
HM 72	382		11'-4"			4'-10"	7'-9 1/2"	6'-3"		2'-11 1/2"								1400
HM 48	333	2	10'-9"	5'-9"	12"	3'-9"	5'-9 1/2"	4'-3"		1'-11 1/2"	2'-4"	3'-0"	8 1/4"	19"	12"	17.00"	17.6	1100
HM 60-64	416		11"			3'-11"	6'-9 1/2"	5'-3"	5'-0"	2'-5 1/2"								1250
HM 72	499		11'-10"			4'-10"	7'-9 1/2"	6'-3"		2'-11 1/2"								1400
HM 48	421	2	11'-8"	6'-3"	12"	4'-2"	5'-9 1/2"	4'-3"		1'-11 1/2"	2'-7"	3'-3"	8 1/4"	19"	12"	17.00"	19.8	1200
HM 60-81	527		11'-8"			4'-2"	6'-9 1/2"	5'-3"		2'-5 1/2"								1350
HM 72	632		12'-4"			4'-10"	7'-9 1/2"	6'-3"		2'-11 1/2"								1500



- NOTES:
- WHEN ORDERING, SPECIFY MODEL, MATERIALS OF CONSTRUCTION AIR/PRODUCT INLET DIAMETER, DISCHARGE SIZE, FILTER MEDIA, GASKET MATERIAL, ELECTRICAL ENCLOSURE, AND OPERATING PRESSURE.
 - COMPRESSED REQ. AIR BASED ON 90 P.S.I.G HEADER PRESSURE.
 - DESIGN PRESSURE: 17" W.G. POSITIVE OR NEGATIVE



GENERAL TOLERANCES
 UNLESS OTHERWISE SPECIFIED THE FOLLOWING SHALL APPLY

MACHINING - .XX= .02 .XXX= .005 ANGLE= .50°
SURFACE ROUGHNESS HEIGHT 63 MICRONS OR LESS
FABRICATION - UNDER 6 6 TO 24 24 TO 60 OVER 60
± .06 ± .12 ± .19 ± .25

UNLESS OTHERWISE SPECIFIED DIMENSIONS ARE IN INCHES

REV. NO.	DESCRIPTION	DATE	BY
REVISIONS			
CUSTOMER:			
CUSTOMER PO NUMBER:			
YOUNG JOB NUMBER:			
TITLE HORIZONTAL UNI-CAGE FILTER(HM SERIES)			
 THE YOUNG INDUSTRIES, INC. MUNCY, PENNSYLVANIA 17756 TELEPHONE: 570-546-3165			
DRAWN BY: SLB		DATE: 12/18/20	
CHECKED BY:		SCALE=1:10	
DRAWING NUMBER S-4-4811-7		SHEET 1 OF 1	REV: 00