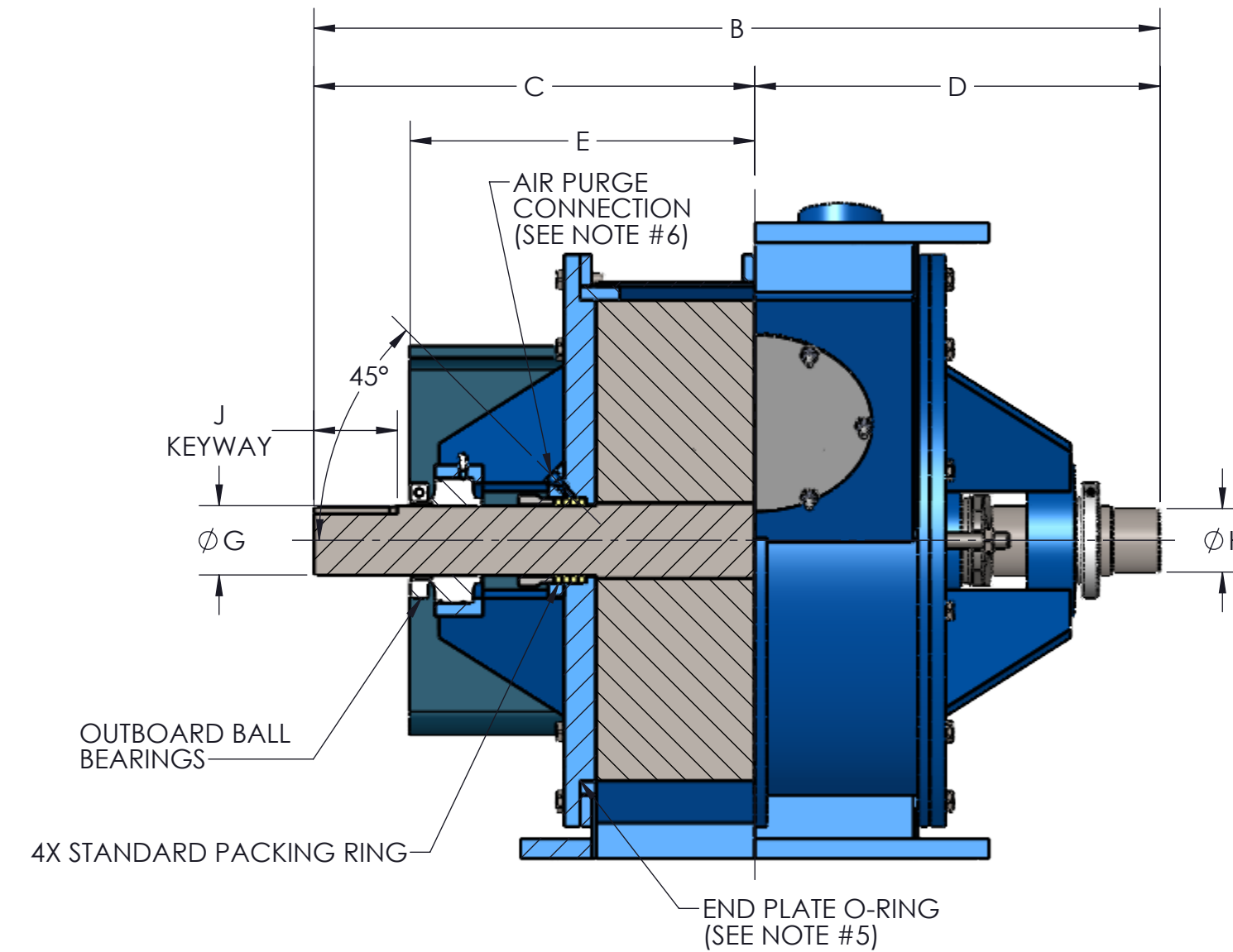
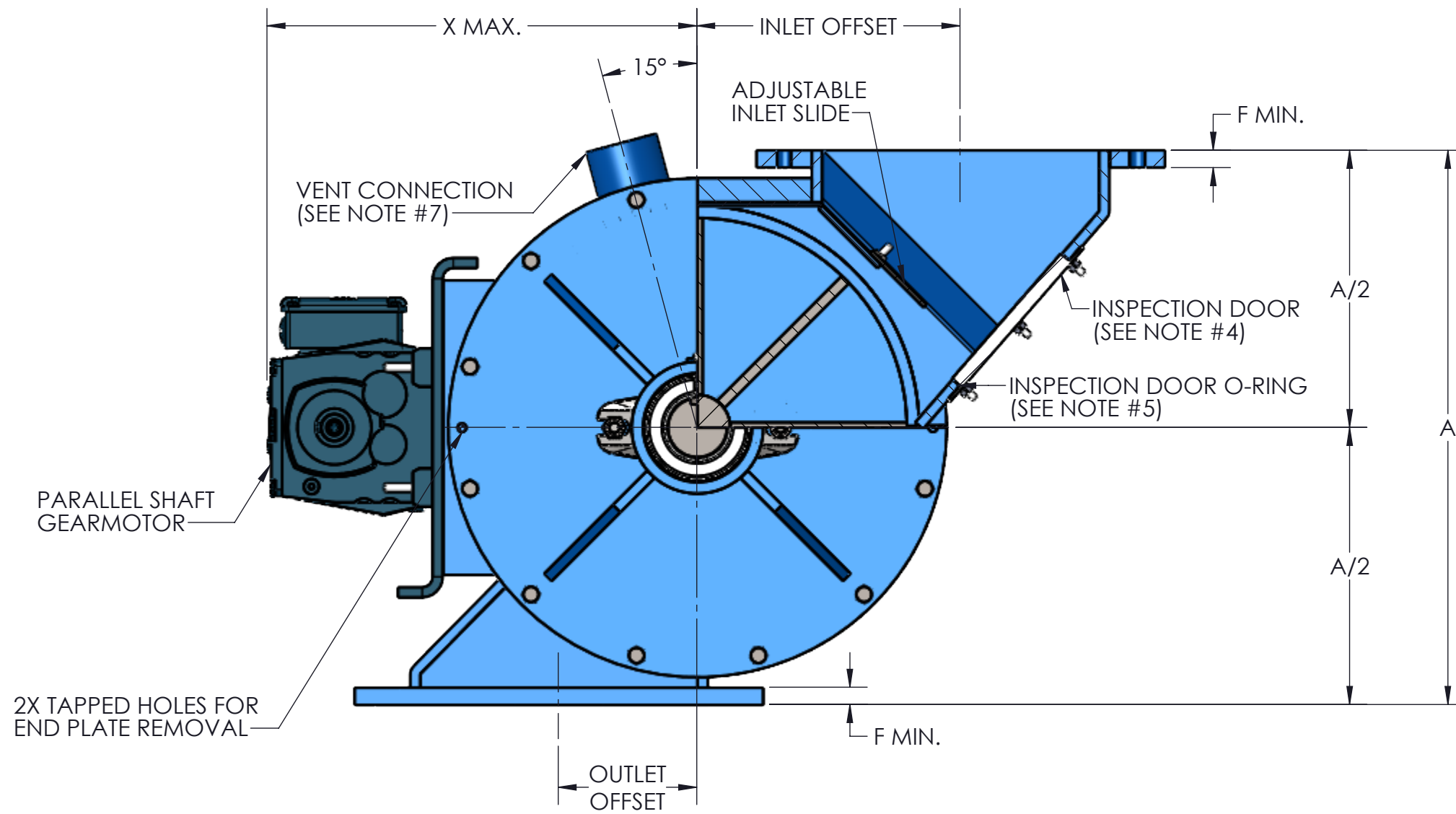
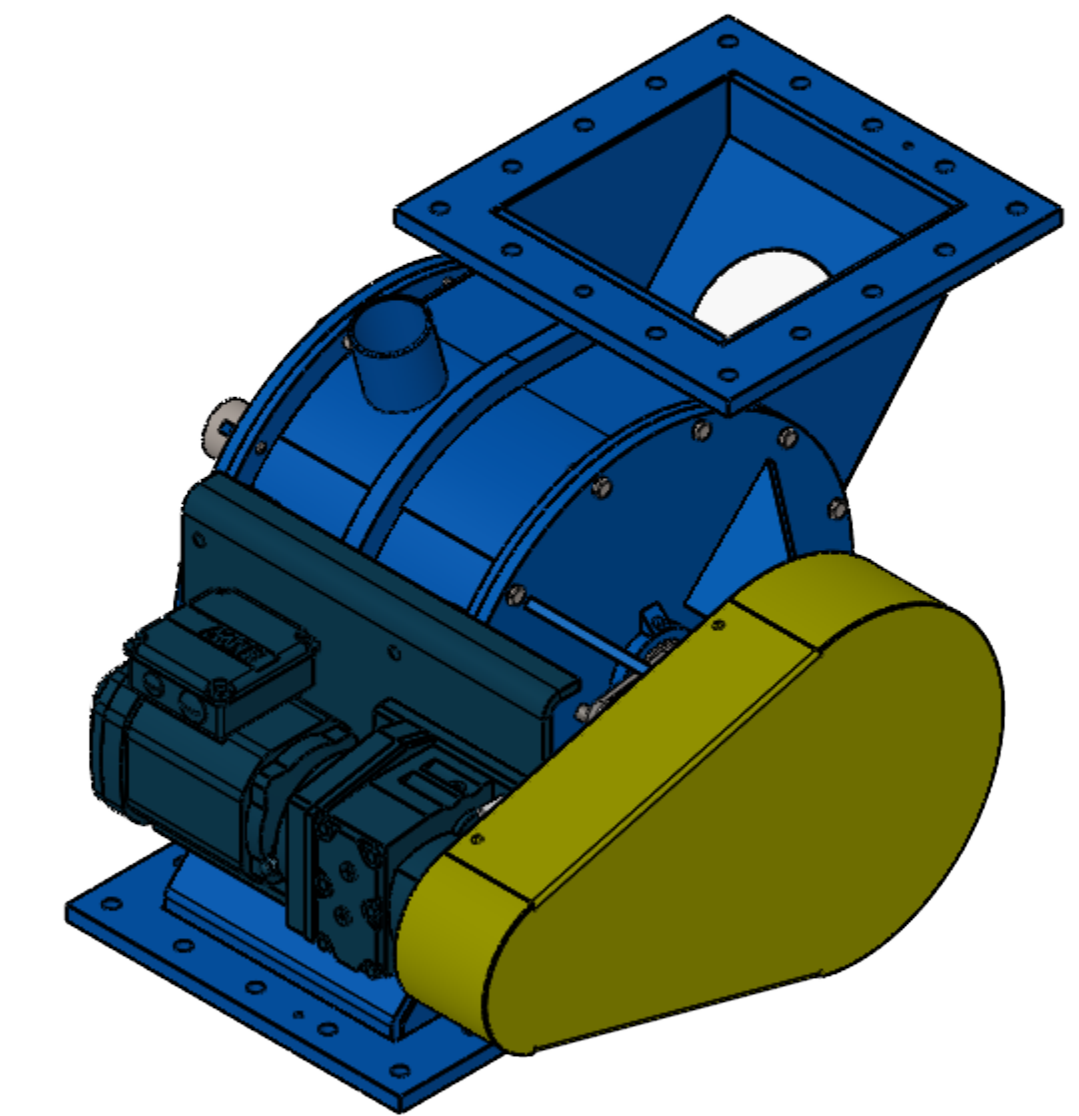
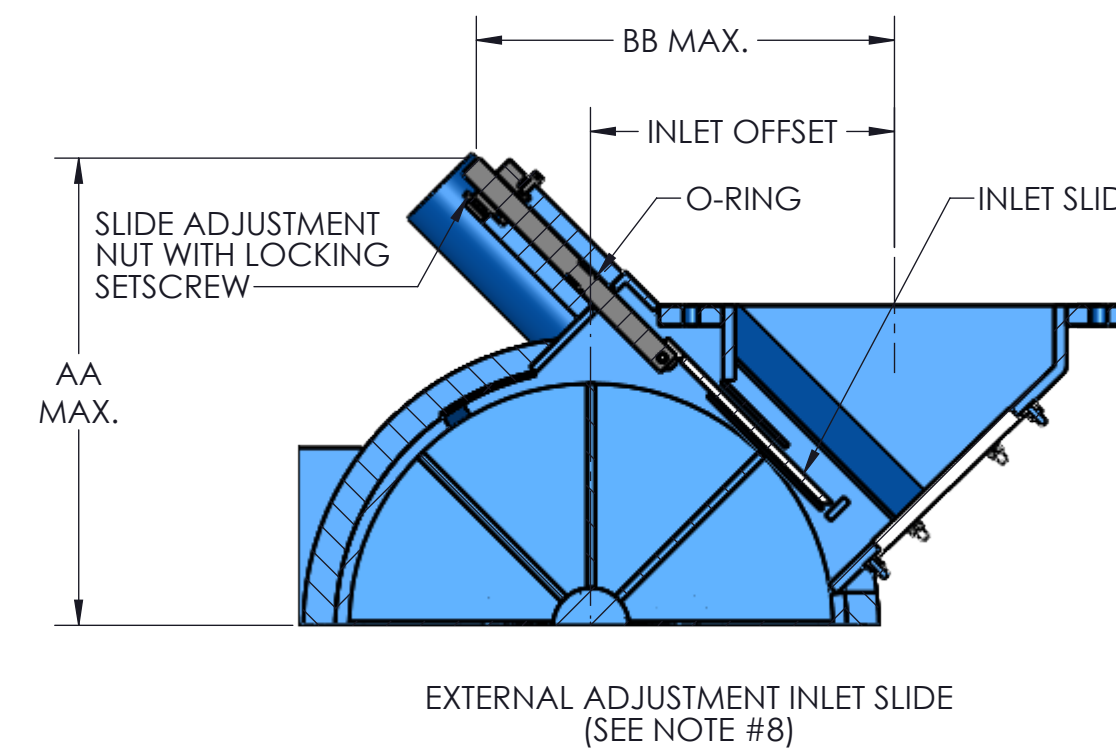


ROTOR SIZES: 4" - 12" 8 VANES  
14" - 24" 12 VANES

TOTALLY ENCLOSED OSHA DESIGNED CHAIN GUARD  
TOTALLY ENCLOSED CHAIN DRIVE INCLUDES:  
VALVE SPROCKET  
DRIVE SPROCKET  
ROLLER CHAIN



- NOTES:
1. VALVE HOUSINGS ARE CAST OF IRON OR ALUMINUM; FABRICATED OF STEEL OR STAINLESS STEEL. ALL ROTORS ARE FABRICATED OF STEEL OR STAINLESS STEEL.
  2. VALVE HOUSINGS ARE AVAILABLE WITH A SQUARE OUTLET ONLY. FABRICATED HOUSINGS ARE AVAILABLE WITH EITHER SQUARE OR ROUND INLET ONLY. ROUND FLANGES MATCH 150# ANSI DRILLING. FLANGE DETAIL SHOWS MAXIMUM NO. OF TAPPED HOLES.
  3. STANDARD HOUSINGS ARE DESIGNED FOR 15 PSI (MAX) INTERNAL & DIFFERENTIAL @ 250 DEGREES F.
  4. INSPECTION DOOR IS STANDARD.
  5. END PLATE AND INSPECTION O-RINGS ARE OPTIONAL AND WILL BE FURNISHED ONLY WHEN SPECIFIED.
  6. AIR PURGE CONNECTIONS 1/8" NPT WITH BRASS LANTERN RINGS ARE OPTIONAL AND WILL BE FURNISHED ONLY WHEN SPECIFIED.
  7. VENT WITH SCH 10 PIPE IS OPTIONAL AND WILL BE FURNISHED ONLY WHEN SPECIFIED.
  8. EXTERNAL ADJUSTMENT INLET SLIDE IS OPTIONAL AND WILL BE FURNISHED ONLY WHEN SPECIFIED. EXTERNAL ADJUSTMENT IS AVAILABLE ONLY ON FABRICATED VALVES WITH A SQUARE INLET

SIZE	ROTOR DIA. X LG.	CAP. (CU. FT. PER REV)	INLET OFFSET	OUTLET OFFSET	STD RPM	VENT SIZE	STD HP	A	B	C	D	E	F	G	H	J	K	L	M	N	P	Q	R	S	T	U	V	W	X	Y	WEIGHT (C/S)	
4	6 X 4	.0211	.0192	4.00	2.00	38	1.25	.50	10.00	19.25	10.31	7.69	7.31	.31	1.19	1.00	.25 X .12 X 2.62	9.00	7.50	4.00	(6) .56	(2) .50-13UNC-2B	7.50	4.00	.62	3.12	N/A	(6) .56	(2) .50-13UNC-2B	15.06	(8) .75	205
5	8 X 5	.0492	.0468	5.00	2.50	38	1.50	.50	12.00	20.50	10.94	8.31	7.94	.44	1.44	1.25	.38 X .19 X 2.62	10.00	8.50	5.00	(6) .56	(2) .50-13UNC-2B	8.50	5.00	.62	3.62	N/A	(6) .56	(2) .50-13UNC-2B	14.31	(8) .88	260
6	10 X 6	.0948	.092	6.00	3.00	32	1.50	.50	14.00	22.38	11.88	9.25	8.88	.44	1.94	1.75	.50 X .25 X 2.62	11.00	9.50	6.00	(6) .56	(2) .50-13UNC-2B	9.50	6.00	.62	4.12	N/A	(6) .56	(2) .50-13UNC-2B	15.38	(8) .88	310
8	12 X 8	.176	.174	8.00	4.00	32	2.00	.75	17.00	24.38	12.88	10.25	9.88	.44	1.94	1.75	.50 X .25 X 2.62	13.50	11.75	8.00	(12) .56	N/A	11.50	8.00	.62	5.12	2.56	(16) .56	N/A	16.38	(8) .88	385
10	15 X 10	.357	.354	9.50	5.00	32	2.50	.75	20.00	26.62	13.88	11.25	10.88	.44	2.19	2.00	.50 X .25 X 2.62	16.00	14.25	10.00	(15) .56	(1) .50-13UNC-2B	14.75	10.00	1.00	6.38	3.19	(15) .56	(1) .50-13UNC-2B	18.00	(12) 1.00	520
12	17 X 12	.559	.555	11.00	6.00	32	2.50	.75	22.00	29.75	15.81	12.44	12.06	.56	2.44	2.25	.62 X .31 X 3.38	19.00	17.00	12.00	(15) .56	(1) .50-13UNC-2B	16.75	12.00	1.00	7.38	3.69	(15) .56	(1) .50-13UNC-2B	19.00	(12) 1.00	660
14	19 X 13	.715	.708	12.00	6.50	32	3.00	.75	24.00	30.75	16.31	12.94	12.56	.56	2.44	2.25	.62 X .31 X 3.38	21.00	18.75	13.00	(15) .56	(1) .50-13UNC-2B	18.00	13.00	1.00	8.00	4.00	(11) .56	(5) .50-13UNC-2B	19.94	(12) 1.13	885
16	23 X 15	1.218	1.203	15.00	7.50	30	3.50	1.50	28.00	34.62	18.31	14.81	14.44	.62	2.94	2.75	.75 X .38 X 3.50	23.50	21.25	15.00	(15) .69	(1) .62-11UNC-2B	20.00	15.00	1.00	9.00	4.50	(11) .69	(5) .62-11UNC-2B	23.00	(16) 1.13	1260
18	25 X 17	1.650	1.641	16.00	8.50	28	3.50	1.50	30.00	36.62	19.31	15.81	15.44	.62	2.94	2.75	.75 X .38 X 3.50	25.00	22.75	17.00	(16) .69	N/A	22.00	17.00	1.00	10.00	5.00	(12) .69	(4) .62-11UNC-2B	24.06	(16) 1.25	1510
20	28 X 19	2.369	2.362	18.00	9.50	28	4.00	2.00	36.00	41.38	22.38	17.50	17.12	.75	3.19	3.25	.75 X .38 X 4.50	27.50	25.00	19.00	(16) .75	N/A	25.50	19.00	1.25	11.50	5.75	(12) .81	(4) .75-10UNC-2B	26.62	(20) 1.25	2200
22	32 X 21	3.476	3.469	20.00	10.50	26	5.00	2.00	40.00	45.75	24.81	19.44	19.06	.75	3.69	3.75	.88 X .44 X 5.00	29.75	27.25	21.00	(16) .75	N/A	27.50	21.00	1.25	12.50	6.25	(12) .81	(4) .75-10UNC-2B	28.62	(20) 1.25	2730
24	34 X 23	4.333	4.309	22.00	11.50	24	5.00	2.00	42.00	47.75	25.81	20.44	20.06	.75	3.75	3.75	.88 X .44 X 5.00	32.00	29.50	23.00	(16) .75	N/A	29.50	23.00	1.25	13.50	6.75	(12) .81	(4) .75-10UNC-2B	29.62	(20) 1.38	3000

GENERAL TOLERANCES	
UNLESS OTHERWISE SPECIFIED THE FOLLOWING SHALL APPLY	
MACHINING - XX# .02 XXX# .005 ANGLES - 30°	
SURFACE ROUGHNESS HEIGHT .63 MICRONS OR LESS	
FABRICATION - UNDER 6" 6 TO 24" 24 TO 40" OVER 40"	
± .06 ± .12 ± .19 ± .25	
UNLESS OTHERWISE SPECIFIED DIMENSIONS ARE IN INCHES. UNLESS SPECIFIED DIMENSIONS & TOLERANCES INTERPRETED PER ASME Y14.5-2009	
3RD	

REV. NO.	DESCRIPTION	DATE	BY
REVISIONS			
CUSTOMER:			
CUSTOMER PO NUMBER:			
YOUNG JOB NUMBER:			
TITLE			
YOUNG INDUSTRIES MODEL 'SE' ROTARY VALVE, SIZE 4"-24", CLASS 15 W/ PARALLEL SHAFT DRIVE, OPEN ROTOR STANDARD DIMENSION SHEET			
DRAWN BY: MEA		DATE: 07/25/24	
CHECKED BY:		SCALE: 1:5	
DRAWING NUMBER	D-21404-10	SHEET 1 OF 1	REV: 00