

EXTENDED LENGTH ROTARY VALVES

WWW.YOUNGINDS.COM

Now Available

Rotary Valve Calculator App



STANDARD FEATURES:

- ▶ Heavy duty construction with 15 PSIG internal and differential pressure rating.
- ▶ Cast or fabricated construction of iron, carbon steel, or 300 series stainless steel.
- ▶ Standard design/operating temperature up to 250°F.
- ▶ Outboard-mounted precision ball bearings.
- ▶ Packing gland provides a tight rotor shaft seal with four rings of PTFE impregnated Kevlar.
- ▶ Open or shrouded rotors.
- ▶ End plates are piloted to assure concentricity of the housing so that tight internal clearances between rotor and housing is provided.

**ADVANCED
TECHNOLOGY
PROVEN DESIGN**

ENGINEERED TO INCREASE PRODUCTIVITY. BUILT TO LAST.

Young Industries manufactures the Model LH, and Model HC Rotary Valves in Extended Lengths. The standard Model LH and Model HC Rotary Valves have square flanged inlet and discharge connections. The extended length version for these rotary valves have rectangular flanged inlet and discharge connections.

The standard Extended Length Rotary Valve is a “Double Length” valve. The Double Length Rotary Valve has a rotor that has double the length of the standard square flanged rotary valve. Without increasing the height of a standard valve, the capacity is doubled by increasing the length of the rotor.

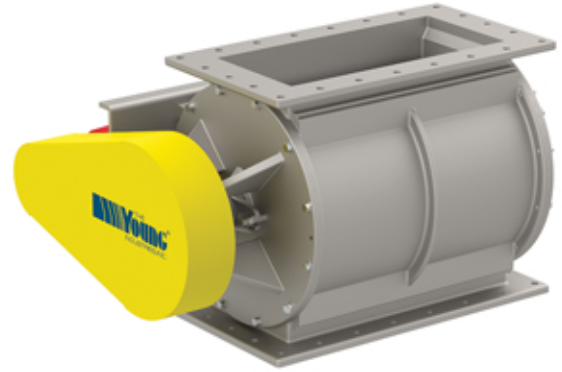
Young Industries Extended Length Rotary Valves are engineered to withstand the internal pressure and operating temperature as required by the application. The rotor shaft size is derived based on differential pressure, operating temperature, and rotor length.

The Extended Length Rotary Valves can be supplied in special lengths as required by the application. We have supplied these valves in lengths up to 5x the length of the standard rotary valve.

EXTENDED LENGTH ROTARY VALVES



**Standard 10" Model HC
Rotary Valve**



**10" X 20" Model HC
Double Length Rotary Valve**

On those occasions where there is very limited headroom and a high discharge rate is needed, the extended length option can make all the difference. These rotary valves offer the same rugged design features as our standard line of Model LH and Model HC Rotary Valves. The standard rotor has eight vanes to insure there is always two blades positioned between the inlet and discharge. This two-blade seal and precision machined housing with piloted end plates ensures that there is minimum air or gas leakage in those applications where the valve is used to seal between two different pressure or vacuum zones.

Sizing Examples:

10" Model HC Rotary Valve

Rotor is 15" diameter x 10" Long

Volumetric capacity of Type A rotor is 0.893 cu. ft. per revolution

10" x 20" Model HC Double Length Rotary Valve

Rotor is 15" diameter x 20" Long

Volumetric capacity of Type A rotor is 0.1.786 cu. ft. per revolution

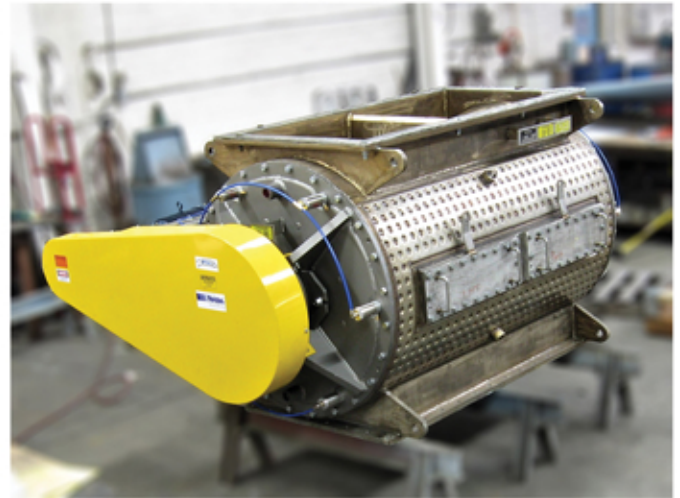
The volumetric capacity increases 0.089 cu. ft per revolution for every inch in length for this size valve.

Specific Size Rotary Valve

Should a valve be needed with a 10" x 24" rectangular inlet

Rotor is 15" diameter x 24" long

Volumetric capacity of Type A rotor is 2.14 cu. ft. per revolution



30" X 60" Model HC Double Length Rotary Valve

Design Features:

- ▶ 15 PSIG internal pressure at 280 degrees F design
- ▶ 60 PSIG ASME UM Stamp Steam jacket body
- ▶ Patented End Seal design for low leakage

See Model HC bulletin for the optional features available