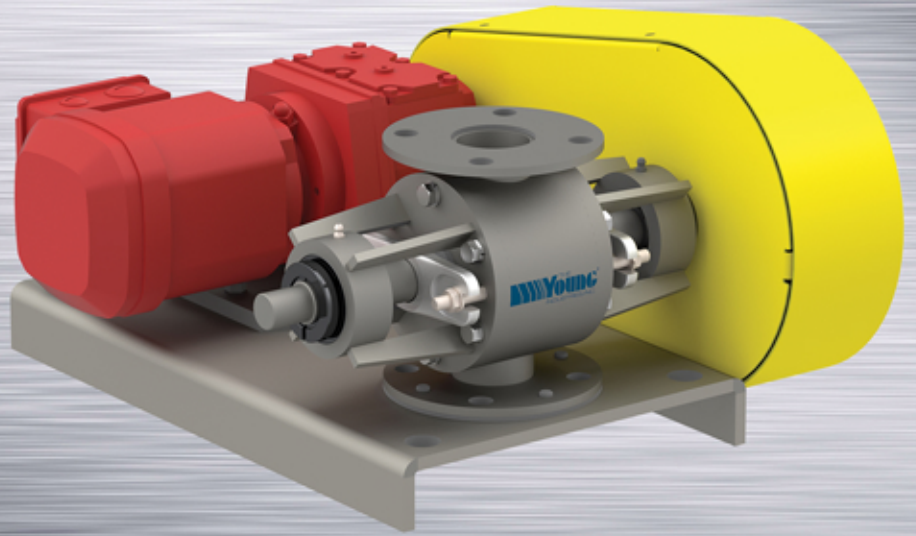


MICRO - MODEL HC ROTARY VALVES

Size 1" through 3"

WWW.YOUNGINDS.COM



STANDARD FEATURES:

- ▶ Heavy duty construction with 15 PSIG internal and differential pressure rating.
- ▶ Fabricated construction of carbon steel, or 300 series stainless steel.
- ▶ Standard design/operating temperature up to 250°F.
- ▶ Round or square inlet and discharge flanges.
- ▶ Outboard-mounted precision ball bearings.
- ▶ Packing gland provides a tight rotor shaft seal with four rings of PTFE impregnated Kevlar.
- ▶ Open or shrouded rotors.
- ▶ End plates are piloted to assure concentricity of the housing so that tight internal clearances between rotor and housing is provided.

ENGINEERED TO INCREASE PRODUCTIVITY. BUILT TO LAST.

The Young Industries Inc. offers the Micro-Model HC Drop-Thru Rotary Valves designed for low capacity or laboratory size applications. These Rotary Valves are manufactured to have the same superior performance and reliability as our larger size valves. The valves include outboard mounted bearings and utilize a packing gland in the shaft seal area. The Micro-Model HC Rotary Valves are available in Sizes 1" thru 3" with round or square inlet and discharge flanges.

The Micro-Model HC Rotary Valves have vertical inlet and discharge throats. The standard rotor used for these valves have eight vanes to insure there is always two blades positioned between the inlet and discharge. This two-blade seal with precision machined housing ensures there is minimum air or gas leakage in those applications where the valve is used to seal between two different pressure or vacuum zones. This series of Micro-Rotary Valves offer the standard features of the larger Model HC Rotary Valves and have many of the same optional features available.

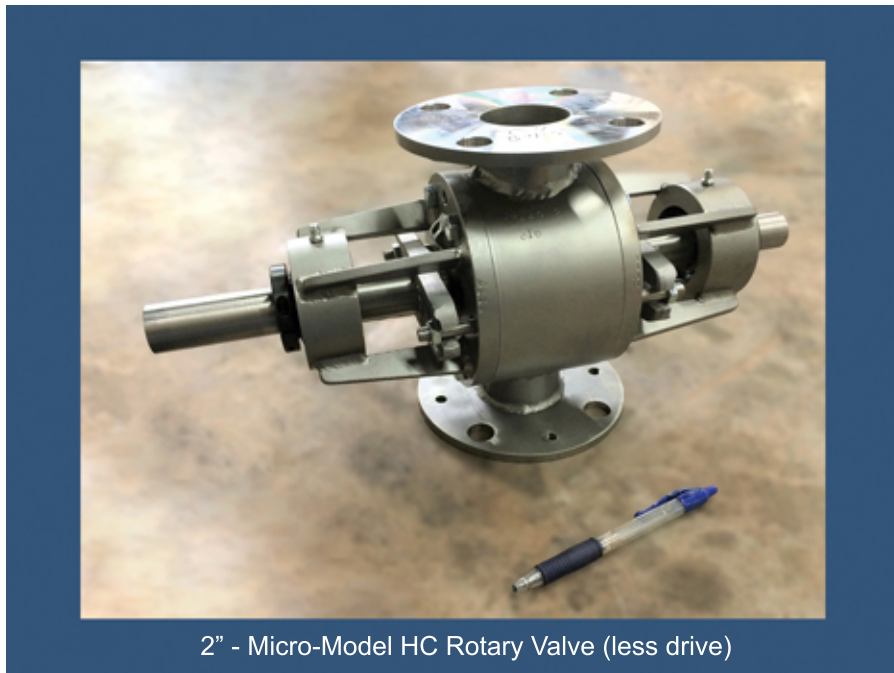
**ADVANCED
TECHNOLOGY
PROVEN DESIGN**



**Rotary Valve Calculator
Download Today!**

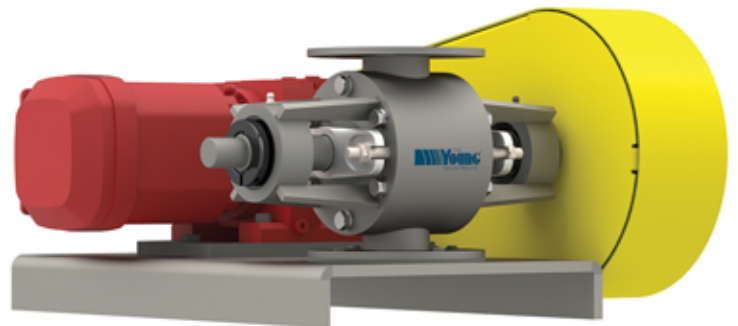


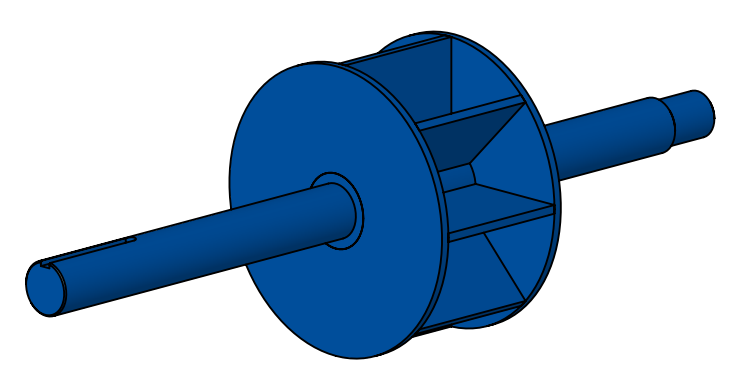
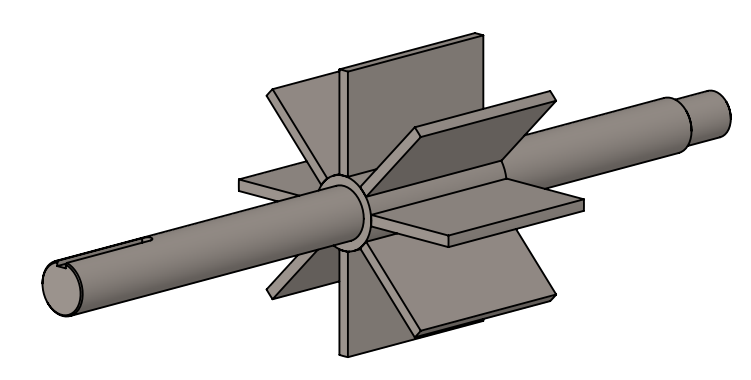
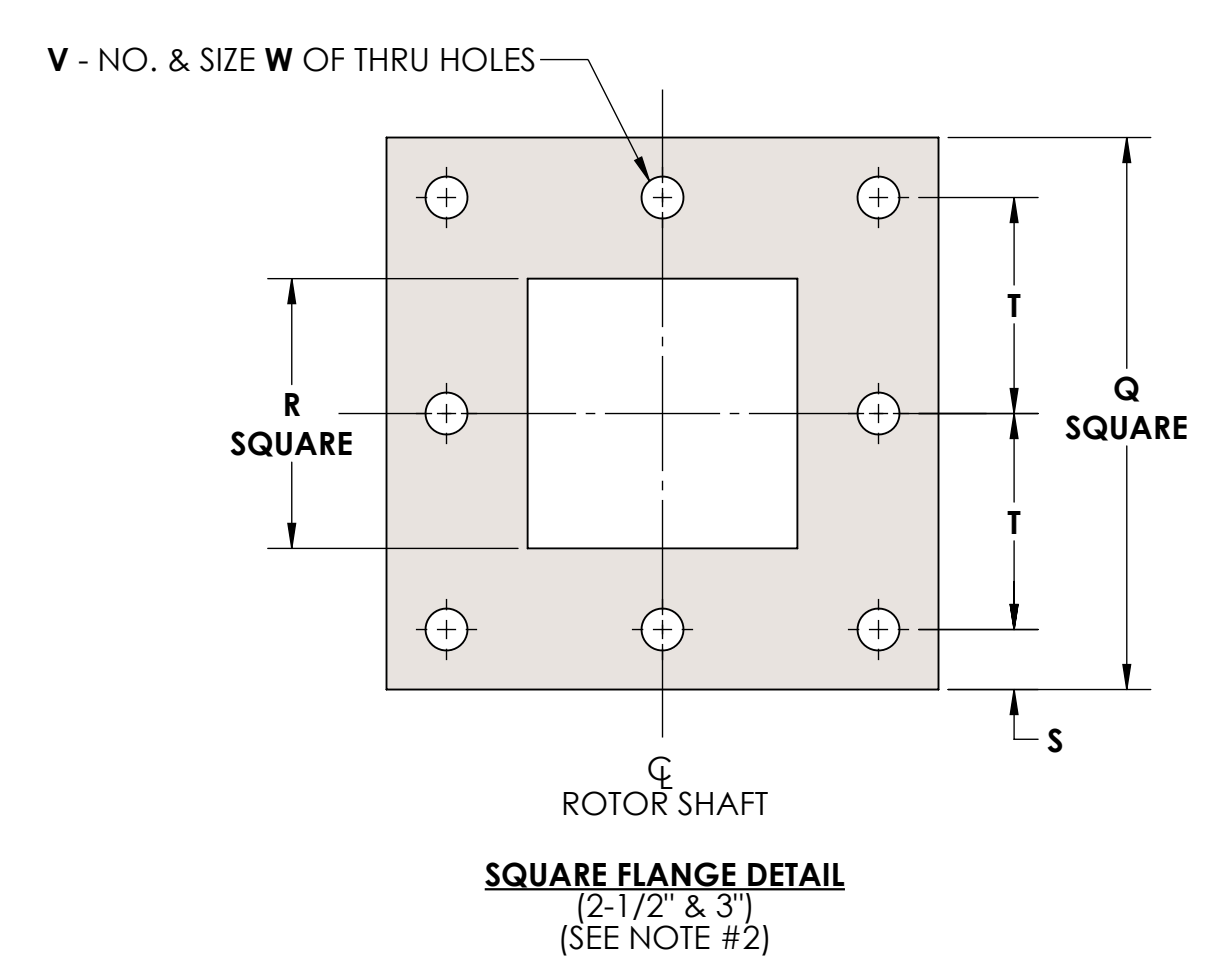
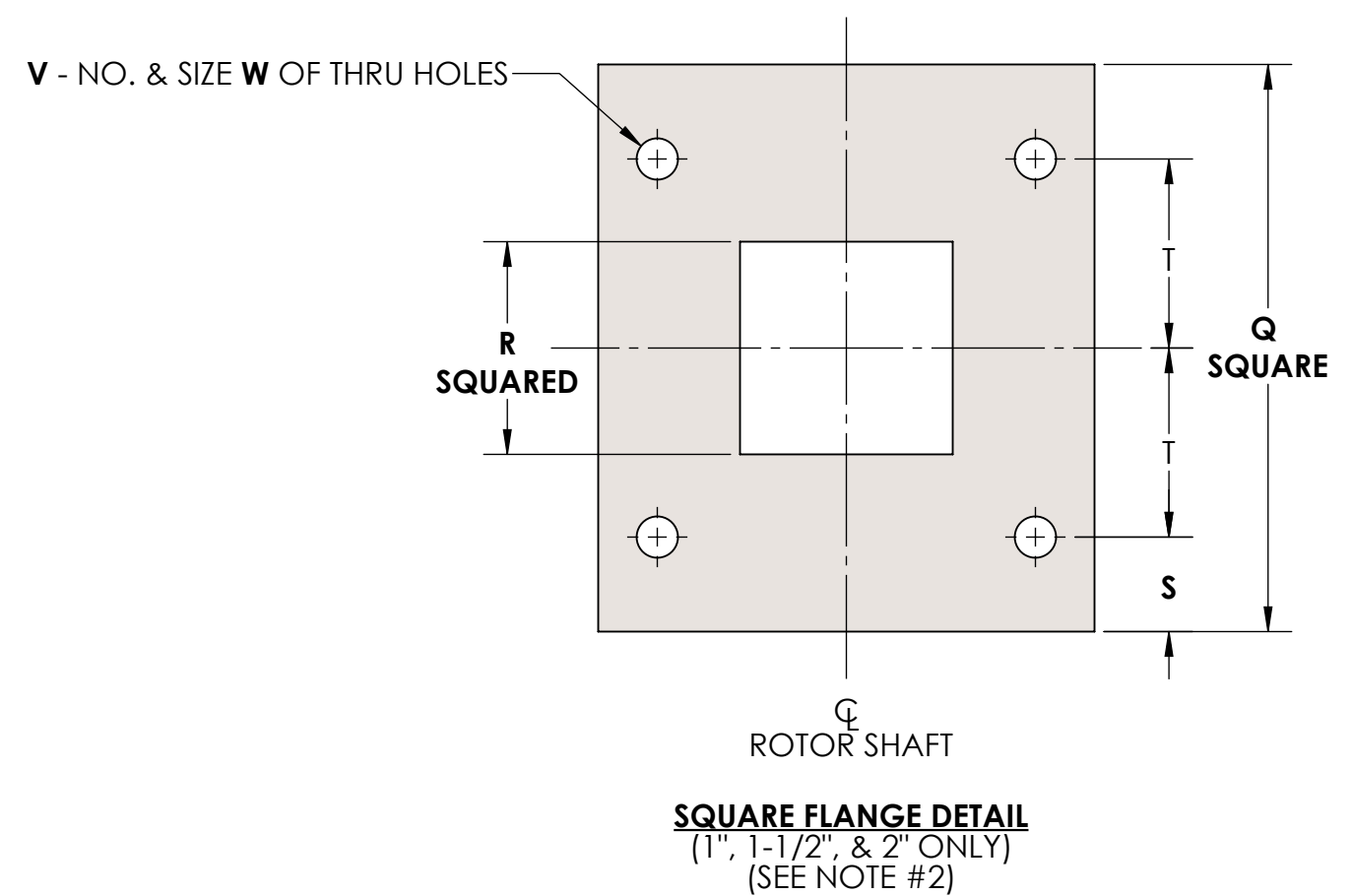
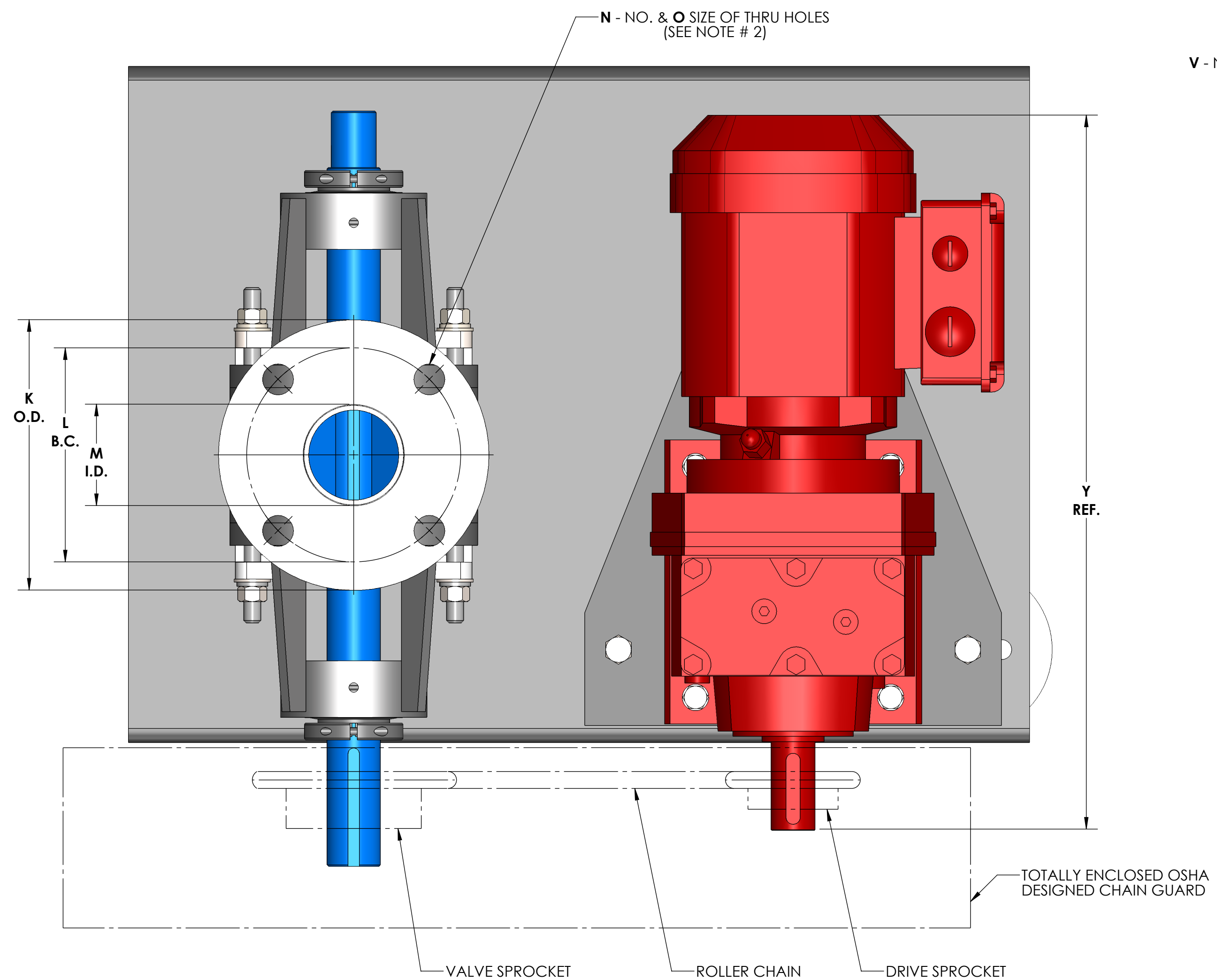
MICRO - MODEL HC ROTARY VALVES



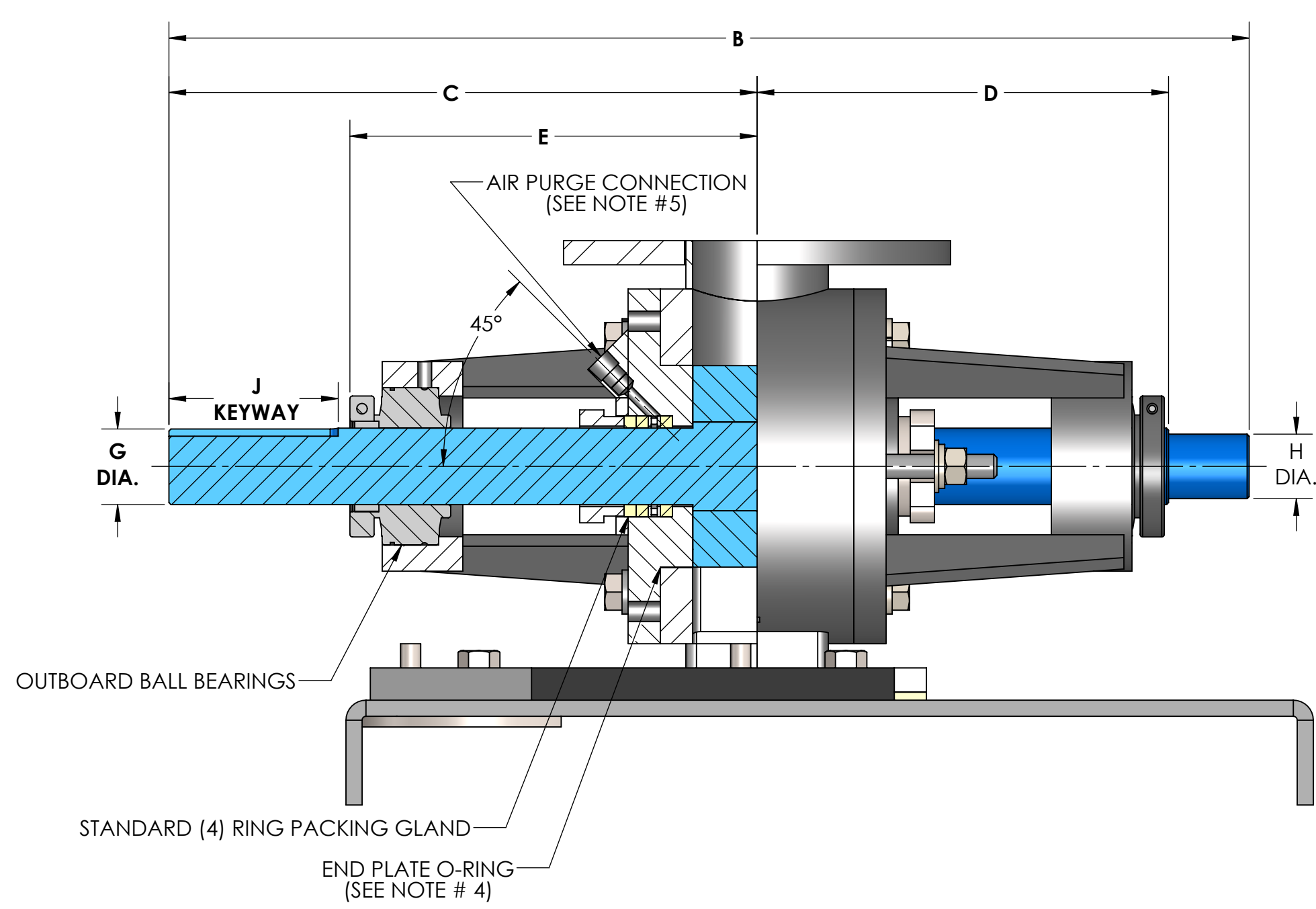
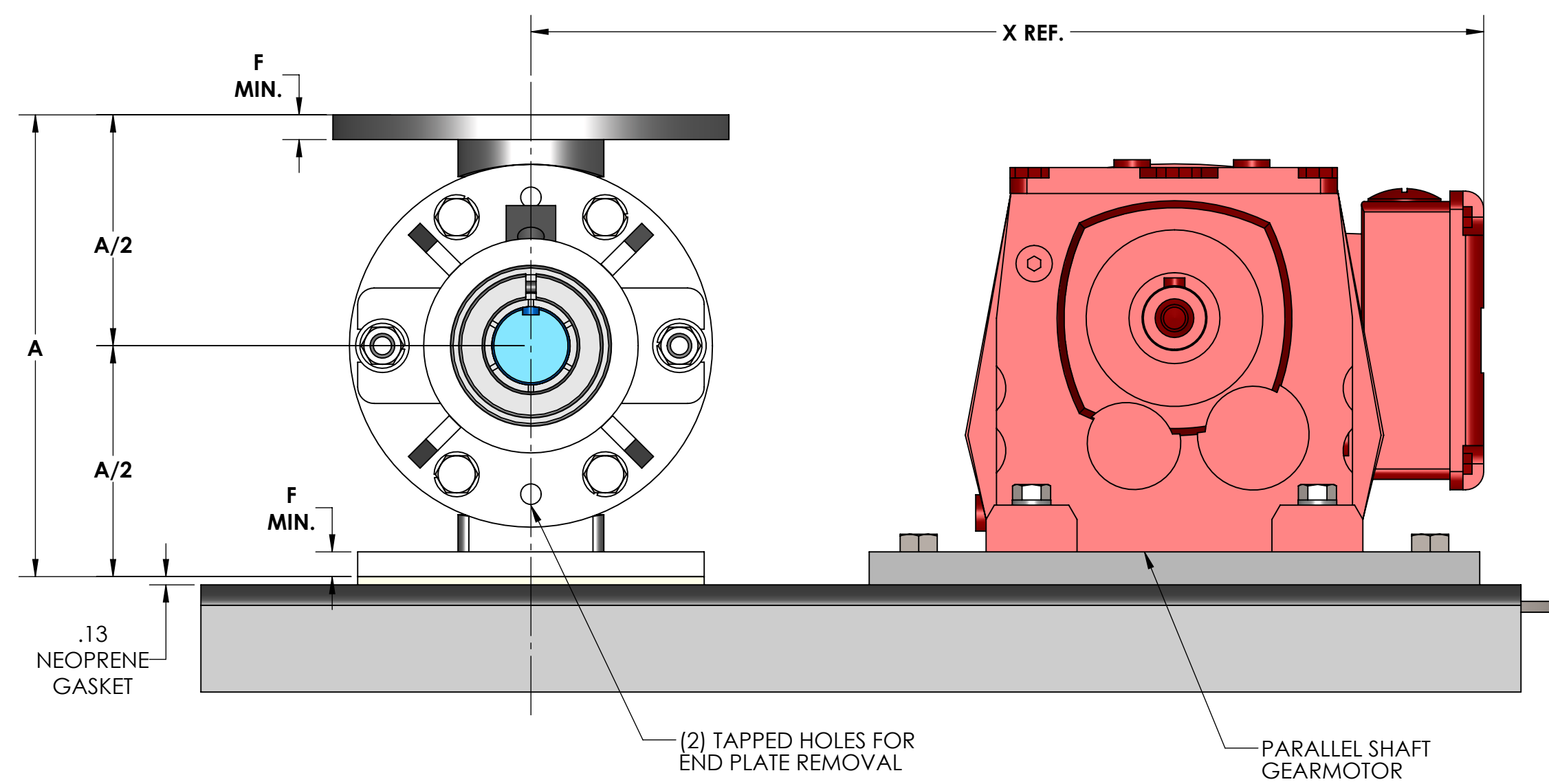
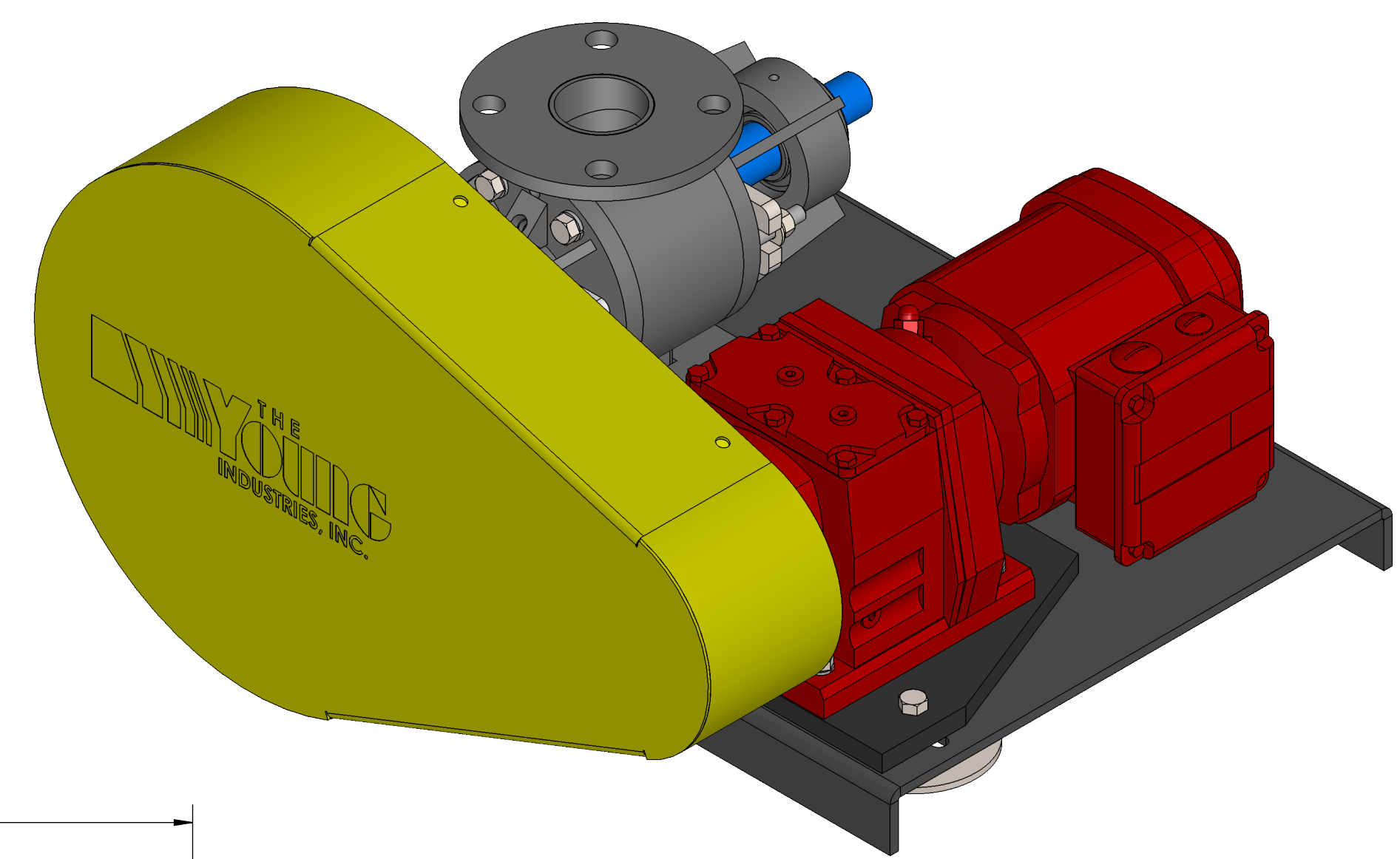
OPTIONAL FEATURES:

- ▶ High internal pressure designs up to 350 PSIG.
- ▶ High temperature designs up to 1600°F.
- ▶ Roller chain drive with parallel shaft TEFC driven gearmotor is standard with explosion proof motors of any specified manufacturer available.
- ▶ Special materials of construction including various grades of Stainless Steel, Hastelloy, Titanium, Inconel or Engineered Plastics.
- ▶ Interior polish or electro-polish per application requirement.
- ▶ Special packing materials of graphite, food grade PTFE or as needed by process.
- ▶ Interior coating for providing abrasion resistance or material release include hard chrome plating, nickel plating, or Teflon.
- ▶ Transflow® fluidized rotors for cohesive powders.
- ▶ Lantern ring with purge connection in the packing gland.
- ▶ Rotor shaft Mechanical Seals.
- ▶ Self-adjusting packing follower.
- ▶ Shaft seal coatings.
- ▶ End plate purges.
- ▶ Rotor tips and edges can be beveled.
- ▶ Exterior painting and coatings to meet customer specifications.





ROTOR SIZES: 1" - 3" 8-VANE
NOTE: FILLED ROTOR POCKETS ARE AVAILABLE UPON REQUEST



SIZE	ROTOR DIA. X LG.	ROTOR CAPACITY CU. FT. PER REV.		STD HP	A	B	C	D	E	F	G	H	J	K	L	M	N	O	Q	R	S	T	V	W	X	Y	WEIGHT C/S
1	2 x 1	0.000438	-		6	15.50	8.38	5.88	5.63		1.00	.75		4.25	3.13	1.00			4.25	1.00		1.50					160
1-1/2	2.50 x 1.50	0.00185	-		6.5	16.00	8.63	6.13	5.88					5.00	3.88	1.50			4.75	1.50		1.75	4				165
2	3.13 x 2	0.00400	-	1/3	7	16.75	9.13	6.38	6.31	.38			.25 X .13 X 2.38	6.00	4.75	2.00			5.25	2.00		2.00					190
2-1/2	4.06 x 2.25	0.0115	0.00682		8	17.75	9.56	7.00	6.56		1.19	1.00		7.00	5.50	2.50			5.75	2.50		2.25	8				195
3	5.13 x 3	0.0236	0.0159		9	18.25	9.81	7.25	6.81					7.50	6.00	3.00			6.50	3.00		2.63					205

SPECIFICATIONS ARE SUBJECT TO CHANGE WITHOUT NOTIFICATION

- NOTES:
- STANDARD VALVE HOUSINGS AND ROTORS ARE FABRICATED STEEL, OR STAINLESS STEEL. OPTIONAL MATERIALS AVAILABLE BY REQUEST.
 - VALVE HOUSINGS ARE AVAILABLE WITH EITHER A SQUARE OR ROUND INLET AND OUTLET. ROUND FLANGES MATCH 150# ANSI DRILLING.
 - STANDARD HOUSINGS ARE DESIGNED FOR 15 PSI (MAX) INTERNAL & DIFFERENTIAL @ 250 DEGREES F.
 - END PLATE O-RINGS ARE OPTIONAL AND WILL BE FURNISHED ONLY WHEN SPECIFIED.
 - AIR PURGE CONNECTIONS WITH BRASS LANTERN RINGS ARE OPTIONAL AND WILL BE FURNISHED ONLY WHEN SPECIFIED

GENERAL TOLERANCES	
UNLESS OTHERWISE SPECIFIED THE FOLLOWING SHALL APPLY	
MACHINING - .XX= .02 .XXX= .005 ANGLE= .50°	
SURFACE ROUGHNESS HEIGHT 63 MICRONS OR LESS	
FABRICATION - UNDER 6 6 TO 24 24 TO 60 OVER 60	
± .06 ± .12 ± .19 ± .25	
UNLESS OTHERWISE SPECIFIED DIMENSIONS ARE IN INCHES	

REV. NO.	DESCRIPTION	DATE	BY
REVISIONS			
CUSTOMER:			
CUSTOMER PO NUMBER:			
YOUNG JOB NUMBER:			
TITLE			
YOUNG INDUSTRIES MODEL 'HC' ROTARY VALVE, SIZE 1" - 3", CLASS 15 WITH PARALLEL SHAFT DRIVE, OPEN / SHROUDED ROTOR STANDARD DIMENSION SHEET			
THE YOUNG INDUSTRIES, INC. HUNCY, PENNSYLVANIA 17756 TELEPHONE: 570-546-3165			
DRAWN BY: BMF		DATE DRAWN: 8/9/18	
CHECKED BY:		SCALE=1:2	
DRAWING NUMBER		SHEET 1 OF 1	REV: 00
S-21091-00			