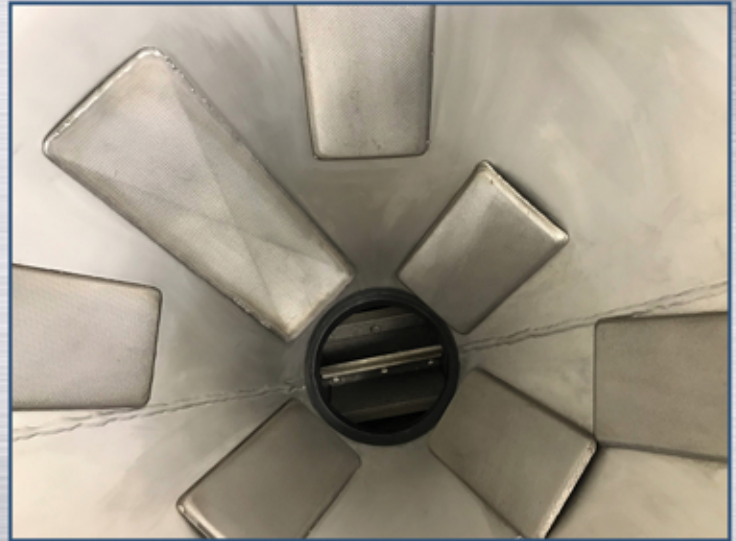


TRANSFLOW POWDER FLUIDIZATION PADS



WWW.YOUNGINDS.COM

CONSTRUCTION

- ▶ 316S/S Multi-Layer Sintered Metal
- ▶ High Mechanical Strength
- ▶ Controlled permeability so gas is evenly distributed
- ▶ Smooth surface finish

TWO STANDARD SIZES

- ▶ 3-3/4" x 7" thick, with 26 sq. in. of fluidization surface
- ▶ 4" x 12" thick, with 48 sq. in. of fluidization surface.

LIFETIME GUARANTEE

We are so confident with our Transflow technology that we can offer our customers a Lifetime Warranty for our two-standard size Transflow Pads. Unlike other aeration pads with fabric diffusers, Young Industries rugged, all metal constructed pads will last a lifetime. Supply dry clean compressed air or gas to the pad and your powder will flow consistently. Our Transflow pads can handle even the finest powders.

**ADVANCED
TECHNOLOGY
PROVEN DESIGN**

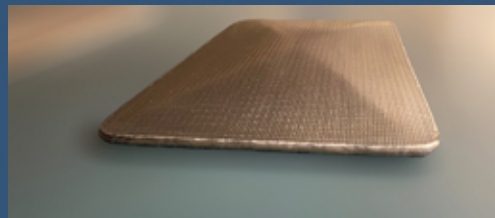
Young Industries Transflow Fluidization pads are uniquely designed to change the flow properties of even the most cohesive powders. By introducing low pressure low volume compressed gas to fine powder, the gas will permeate around the particles to change the flow properties. Transflow fluidization is used on pigments, carbons, oxides, silicas, and many other powders that are typically -100 mesh particle size.

What is Transflow?

Transflow is a fluidization/aeration media developed by Young Industries, specifically designed for powder fluidization having controlled permeability for even gas distribution. Transflow media permeates low pressure gas through powders, changing the flow properties of even the finest, most cohesive powders.

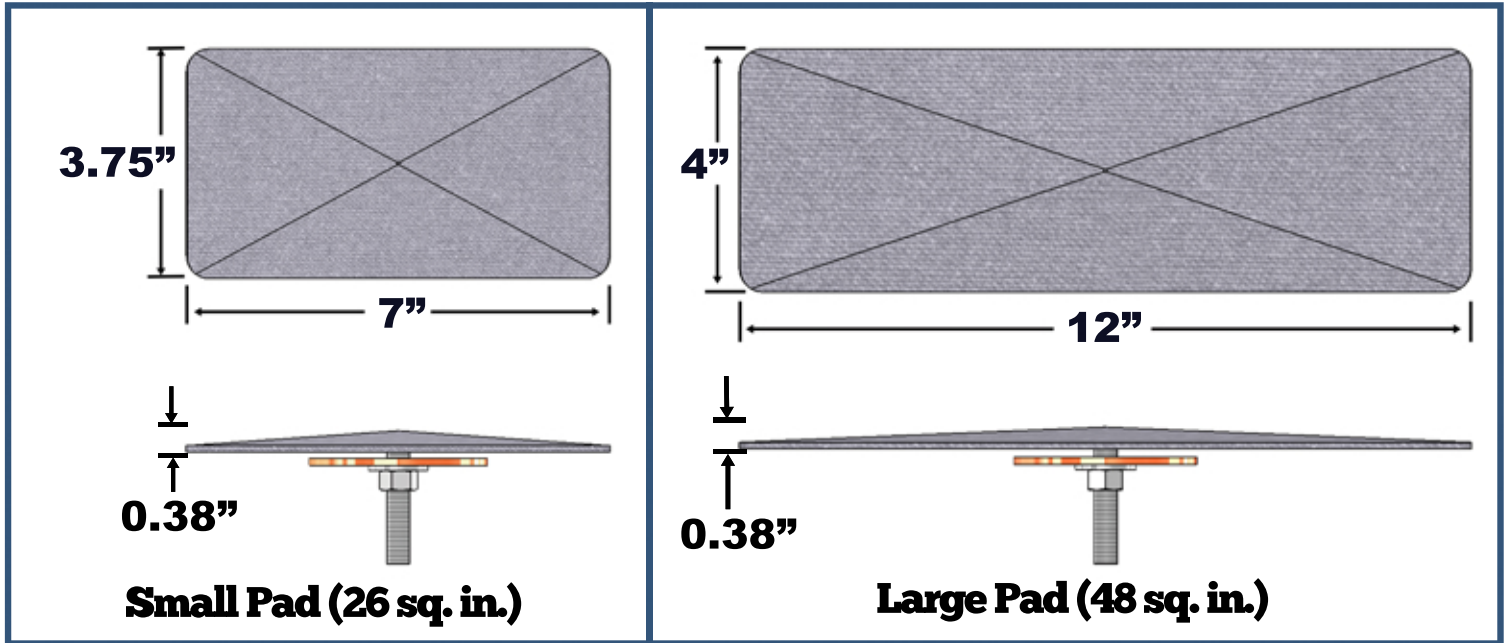
How are the Transflow fluidization pads used?

The 316S/S Transflow pads are mounted in one or several rows at the bottom of a hopper or bin. Mounting the pad is as easy as drilling a .44" diameter hole in the bin and placing the pad on the inside. Each pad has the necessary mounting hardware for installation. The pads are connected to a clean and dry compressed air supply regulated to a pressure of 3-11 PSIG. The pressure will vary depending on the powder and size of bin to be fluidized. Low volume /low pressure compressed air permeates through the Transflow media and uniformly disperses through the powder to change the powder flow properties.



Low Profile Contour

TRANSFLOW POWDER FLUIDIZATION PADS

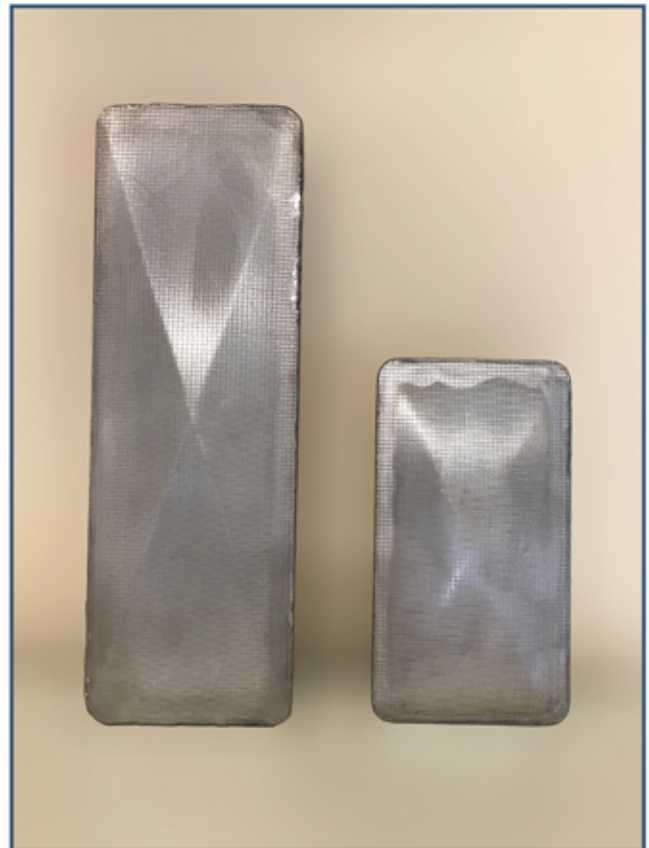


STANDARD SIZE TRANSFLOW PADS

Young Industries offer a wide range of Transflow pads for most applications. We offer two standard size pads that can be easily installed in hoppers or bins. Our Transflow pads have an ultra-thin profile to minimize any internal ledges in the hopper they are mounted to. Our Standard pads are supplied with mounting hardware necessary for mounting to your equipment. Standard Transflow pads are available for same day shipment.

We offer compressed air piping and compressed air regulating equipment as an option for our Transflow Fluidization Pads.

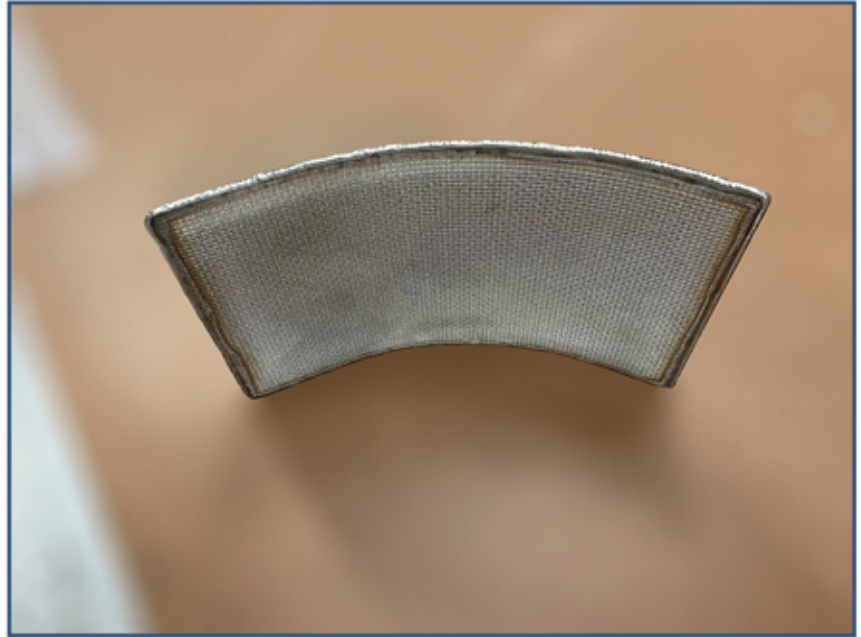
Standard Pads Are In Stock For Quick Shipment



TRANSFLOW POWDER FLUIDIZATION PADS



Custom Shapes



Curved Transflow Pad

CUSTOM SIZES AND SHAPES

When the need arises, Young Industries manufactures Transflow pads of the exact size and shape as needed by the application. These special pads can be manufactured as large or as small as required and are normally designed to match the geometry of the bin in which they will be used. As with all Young Industries Transflow pads, all that is needed is low pressure, low volume dry air at 3-11 PSIG.

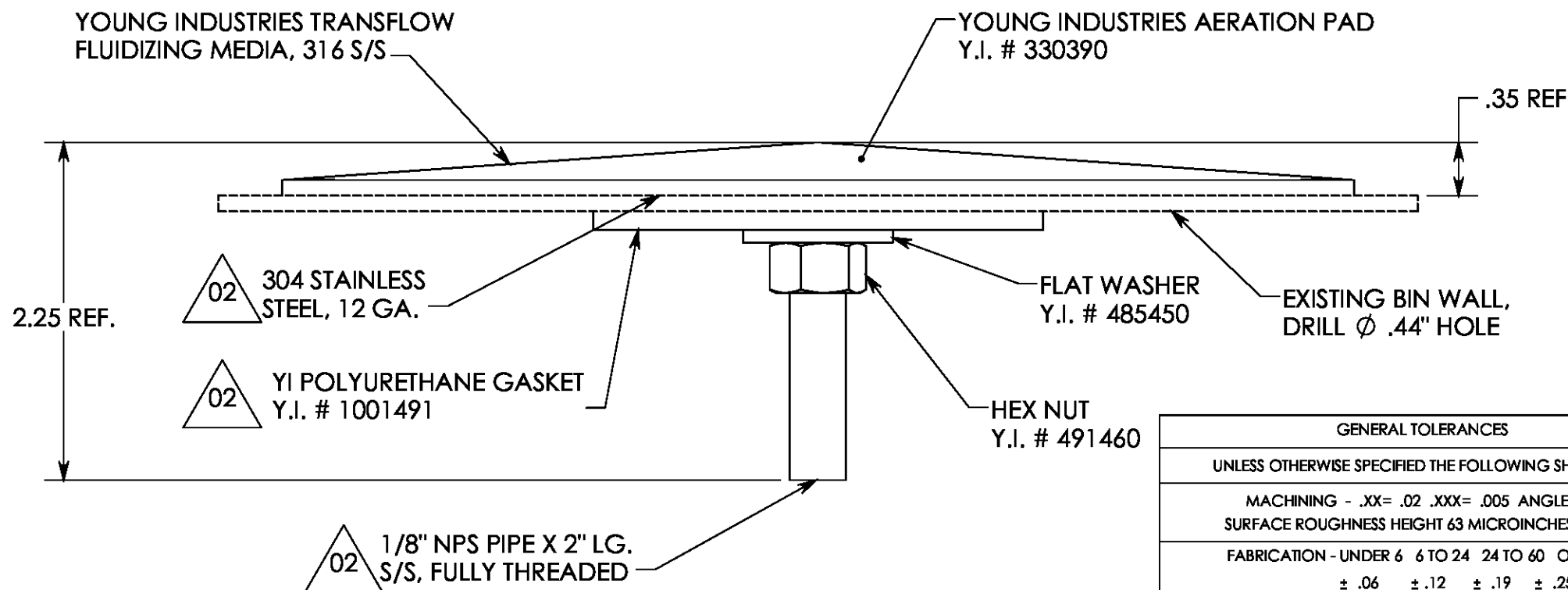
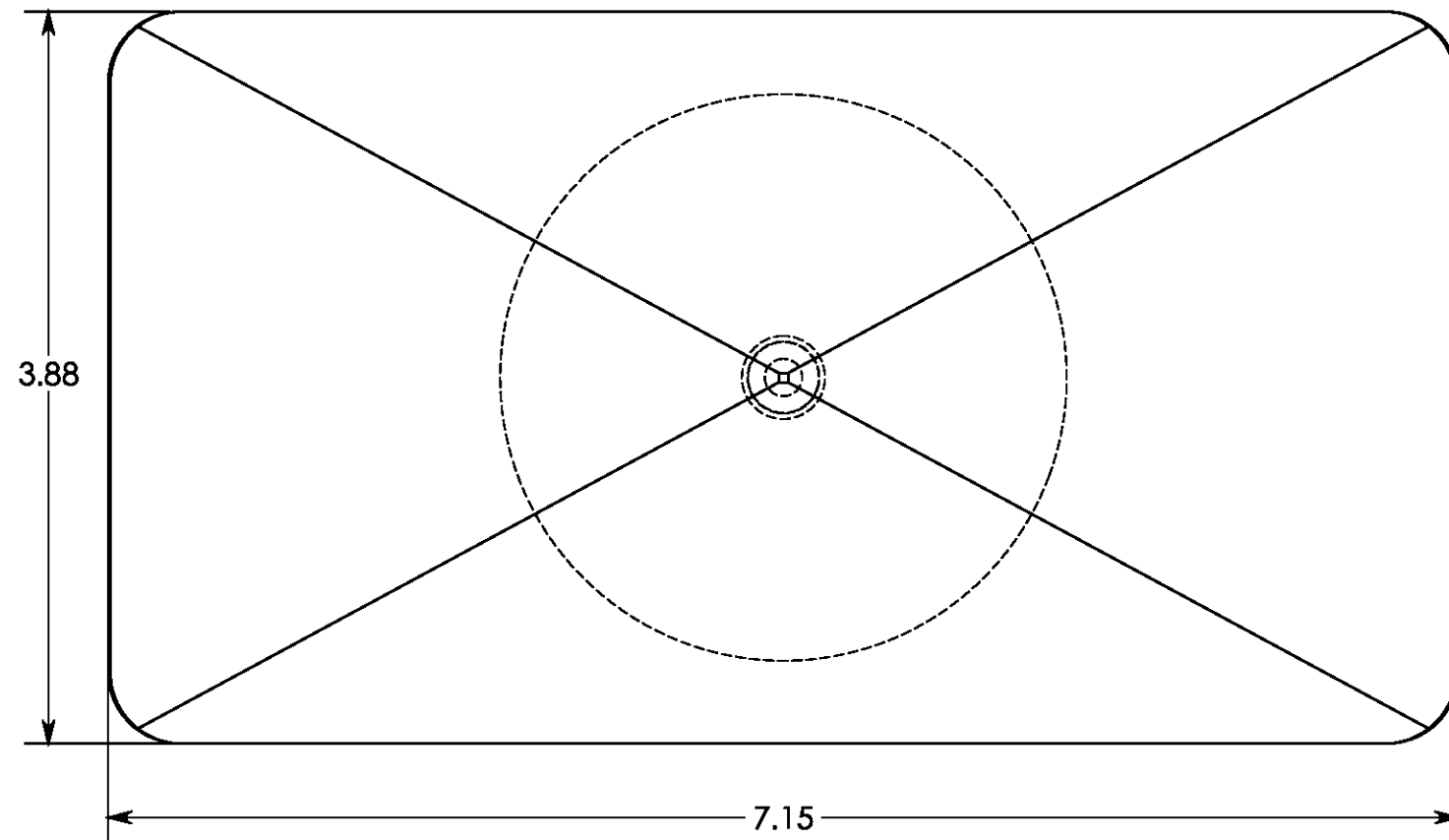
Young Industries Transflow material is 316S/S and about the same thickness as 12 ga. sheet material, we can design, bend, and shape the pads to match the hopper or equipment that they will be used. Typical applications for custom pads are:

- ▶ Valley angle of hoppers
- ▶ Inlets to screw feeders
- ▶ Downspouts and chutes

Young Industries Application Engineering staff can help specify the Transflow Pad that will work for you. Testing of our Transflow products is available in our test facility in Muncy PA.



Transflow Pads in Pyramid Hopper



REV. NO.	DESCRIPTION	DATE	BY
02	CORRECTED GAUGE CALLOUT, CORRECTED GASKET CALLOUT, PLATED STEEL CHANGED TO S/S	10/30/18	JEH
01	UPDATED TO CURRENT DESIGN	05/04/18	SMR

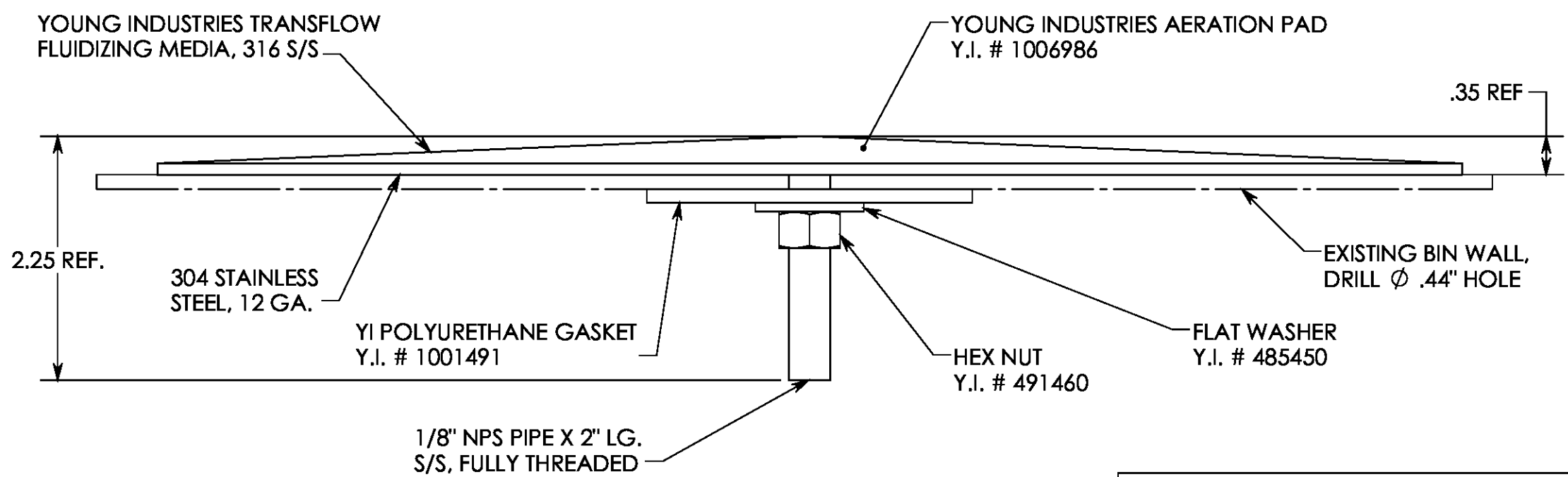
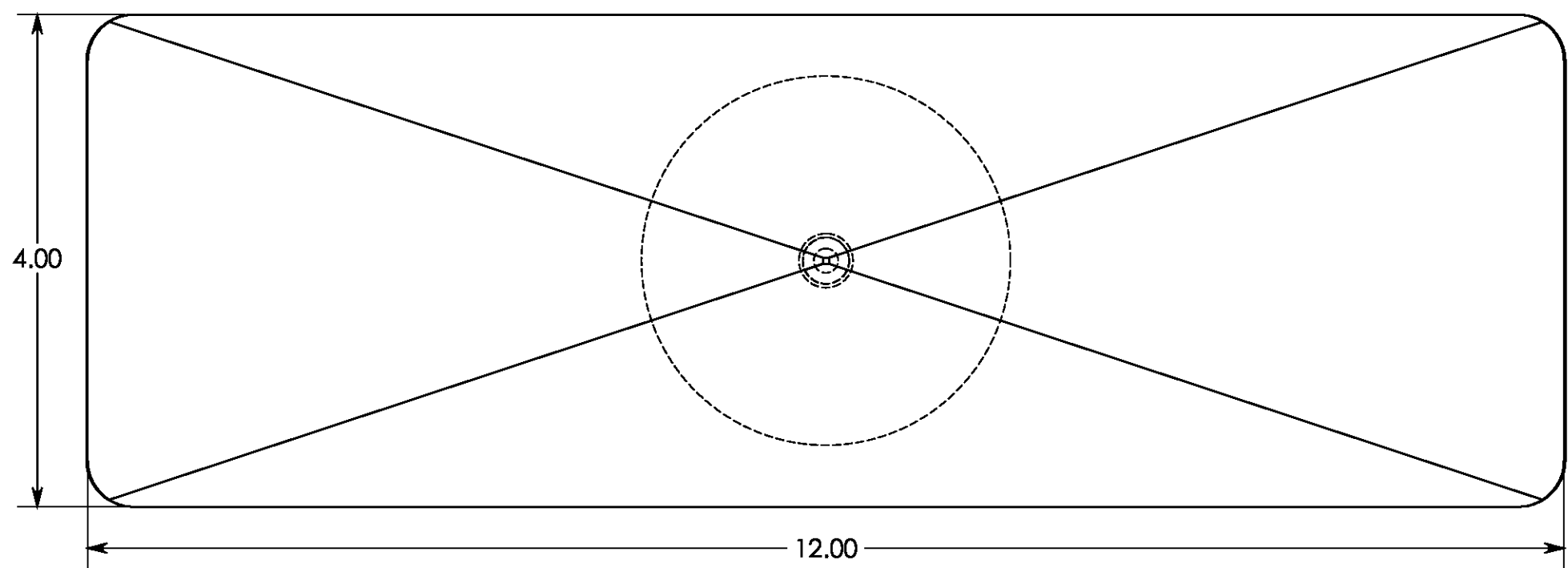
REVISIONS

CUSTOMER:
CUSTOMER PO NUMBER:
YOUNG JOB NUMBER:
TITLE
STANDARD CUSTOMER ASSEMBLY TRANSFLOW AIR PAD W/OUT STUDS



GENERAL TOLERANCES	
UNLESS OTHERWISE SPECIFIED THE FOLLOWING SHALL APPLY	
MACHINING - .XX= .02 .XXX= .005	ANGLE= .50°
SURFACE ROUGHNESS HEIGHT 63 MICROINCHES OR LESS	
FABRICATION - UNDER 6	6 TO 24
24 TO 60	OVER 60
± .06	± .12 ± .19 ± .25
UNLESS OTHERWISE SPECIFIED DIMENSIONS ARE IN INCHES	

DRAWN BY: RWP	DATE DRAWN: 05/04/18
CHECKED BY:	SCALE = 1:1
DRAWING NUMBER B-20384-00	SHEET: 1 OF 1 REV: 02



REV. NO.	DESCRIPTION	DATE	BY

REVISIONS	
CUSTOMER:	
CUSTOMER PO NUMBER:	
YOUNG JOB NUMBER:	
TITLE STANDARD ASSEMBLY: TRANSFLOW AIR PAD W/OUT STUDS, 4.00" X 12.00"	


THE YOUNG INDUSTRIES, INC.
 MUNCY, PENNSYLVANIA 17756
 TELEPHONE: 570-546-3165

GENERAL TOLERANCES	
UNLESS OTHERWISE SPECIFIED THE FOLLOWING SHALL APPLY	
MACHINING - .XX= .02 .XXX= .005	ANGLE= .50°
SURFACE ROUGHNESS HEIGHT 63 MICROINCHES OR LESS	
FABRICATION - UNDER 6	6 TO 24
24 TO 60	OVER 60
± .06	± .12 ± .19 ± .25
UNLESS OTHERWISE SPECIFIED DIMENSIONS ARE IN INCHES	

DRAWN BY: JEH	DATE DRAWN: 10/30/18
CHECKED BY:	SCALE = 1:1.25
DRAWING NUMBER B-20384-11	SHEET: 1 OF 1 REV: 00