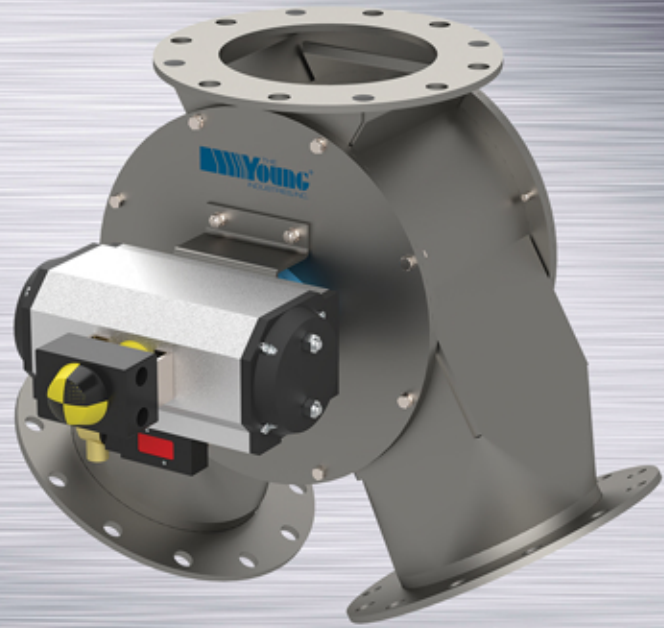


Gravity Flow

ROTARY VANE DIVERTER VALVE

WWW.YOUNGINDS.COM



STANDARD FEATURES:

- ▶ Fabricated carbon steel, or 300 series stainless steel
- ▶ Standard operating temperature up to 250 degrees F
- ▶ Standard internal pressure rating of 2 PSIG
- ▶ O-ring shaft seal
- ▶ Ball bearing supported diverter blade
- ▶ Manual, Pneumatic, or Electric actuation
- ▶ Machined blade and housing (no internal wipers or fasteners)
- ▶ No internal ledges
- ▶ Dust tight to exterior
- ▶ Round or Square Flanges

**ADVANCED
TECHNOLOGY
PROVEN DESIGN**

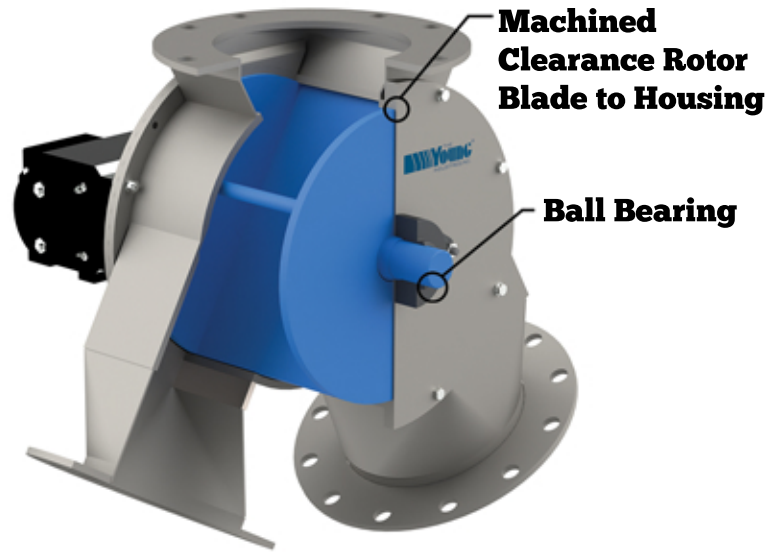
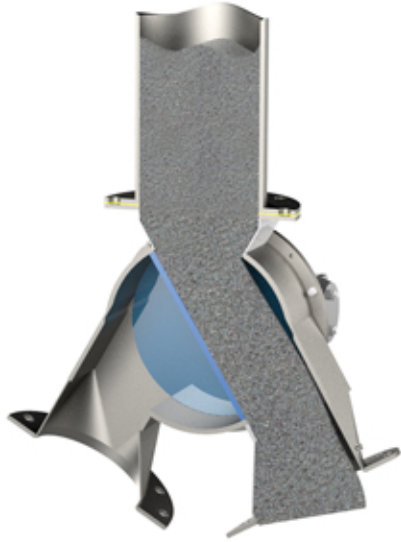
PRECISION MACHINED GRAVITY FLOW DIVERTER NO INTERNAL “HANG-UP” POINTS

Young Industries Rotary Vane Diverter Valve is designed for handling powders or granular products in gravity flow or low-pressure conditions. The Rotary Vane Diverter Valve is available in size 4” thru 12” as standard with larger sizes available. The valve has one inlet connection and two discharge connections and can be configured either symmetrical or asymmetrical. The symmetrical configuration connections can be either 30 degrees or 45 degrees offset from the vertical centerline of the inlet. The asymmetrical configuration has one leg vertical with the off-set leg at 30 degrees from the vertical leg.

The Rotary Vane Diverter Valve utilizes a heavy machined diverter blade/rotor and housing to provide tight internal clearances for sealing from leg to leg. The design is similar to a rotary valve, except the rotor for the Rotary Vane is a single diversion blade. The precision machined surfaces of the valve diverter blade eliminate internal wipers and fasteners that are common in most sheet metal style diverter valves. The Rotary Vane Diverter is an excellent choice for those applications where there can be **no internal “hang-up” points for product to accumulate.** This Diverter Valve has no internal wiper that can wear over time. The Rotary Vane Diverter Valve is virtually maintenance free!

ROTARY VANE DIVERTER VALVE

Gravity Flow



OPTIONAL FEATURES:

- ▶ Abrasion resistant interior coatings
- ▶ Access/ Inspection covers
- ▶ High temperature service
- ▶ Exterior painting and coatings to meet customer specifications
- ▶ Diverter blade can be supplied with flexible wipers
- ▶ Sanitary design needs no tools to remove and access the gate/rotor and internal surfaces

The diverter blade is supported by flange type ball bearings and utilizes an O-ring to seal the diverter shaft to the exterior. The Diverter Valve offers long service life with virtually no maintenance for low pressure and gravity flow conditions.

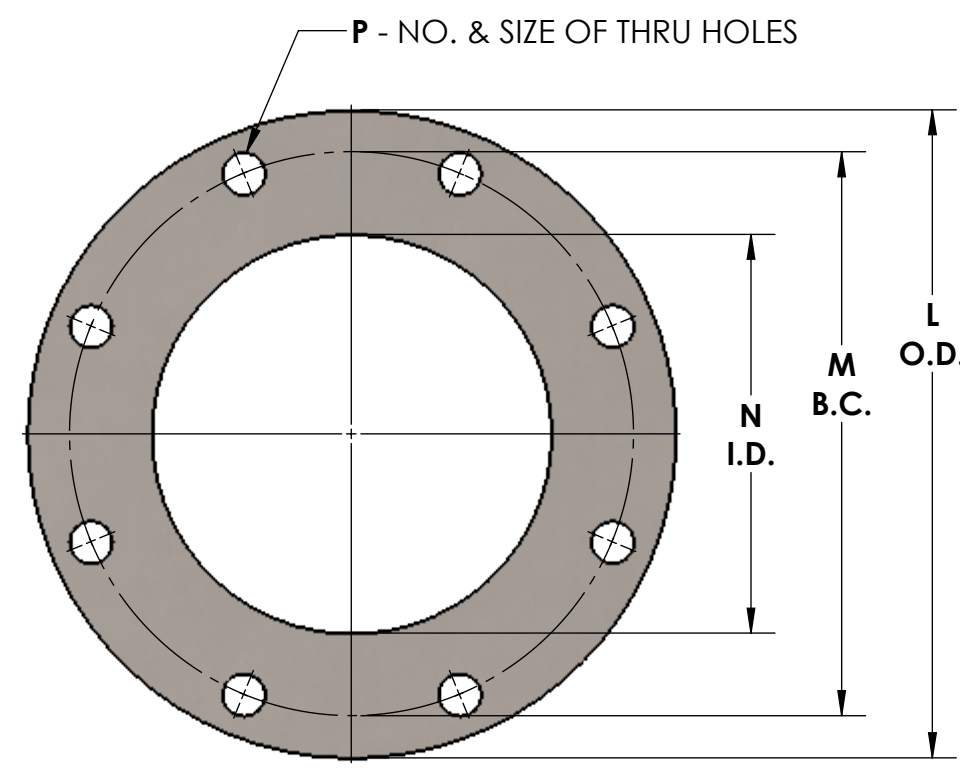
Young Industries Rotary Vane Diverter Valve is available with manual spring tensioned lever operator, chain wheel, rotary pneumatic actuator, or electric actuator.



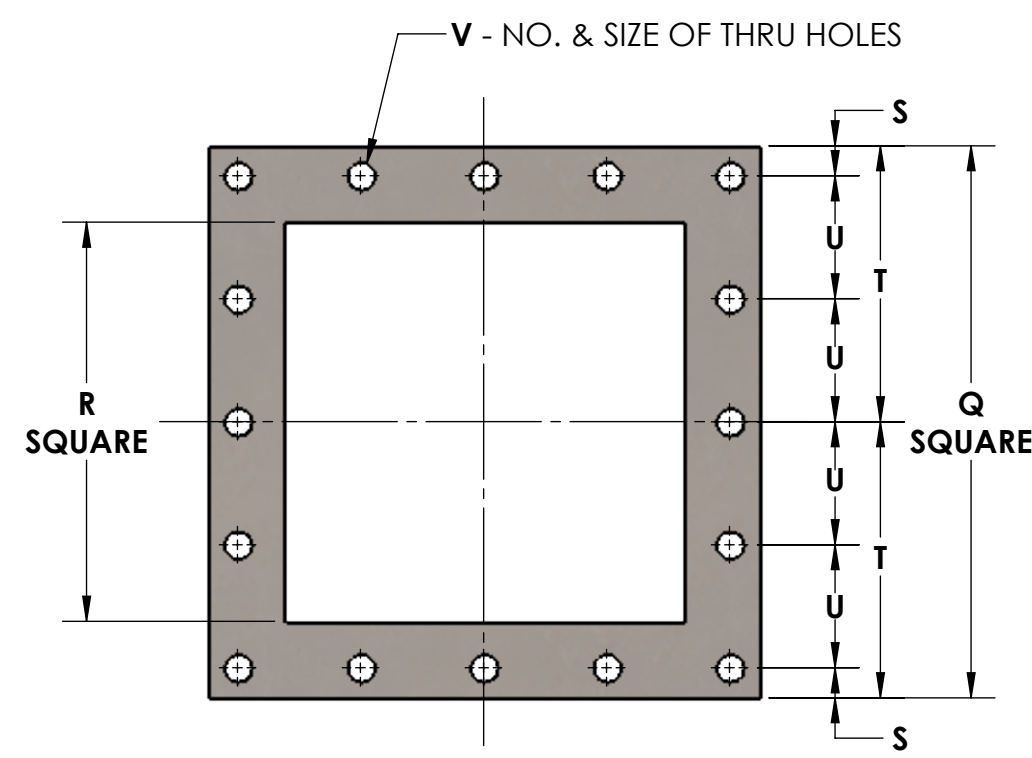
Now Available
Rotary Valve Calculator App



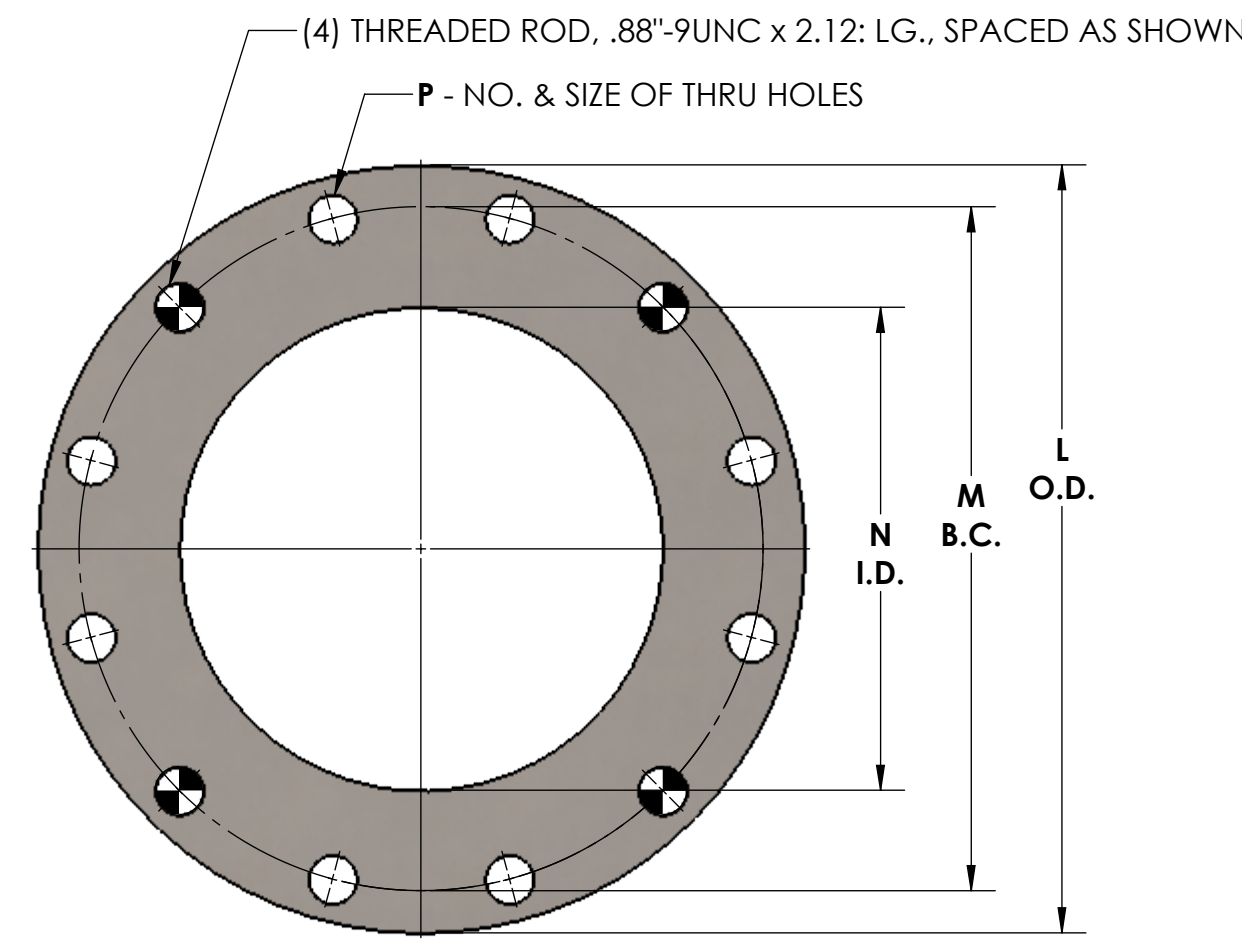
16 PAINTER STREET, MUNCY, PA 17756
(800) 546-3165 | WWW.YOUNGINDS.COM



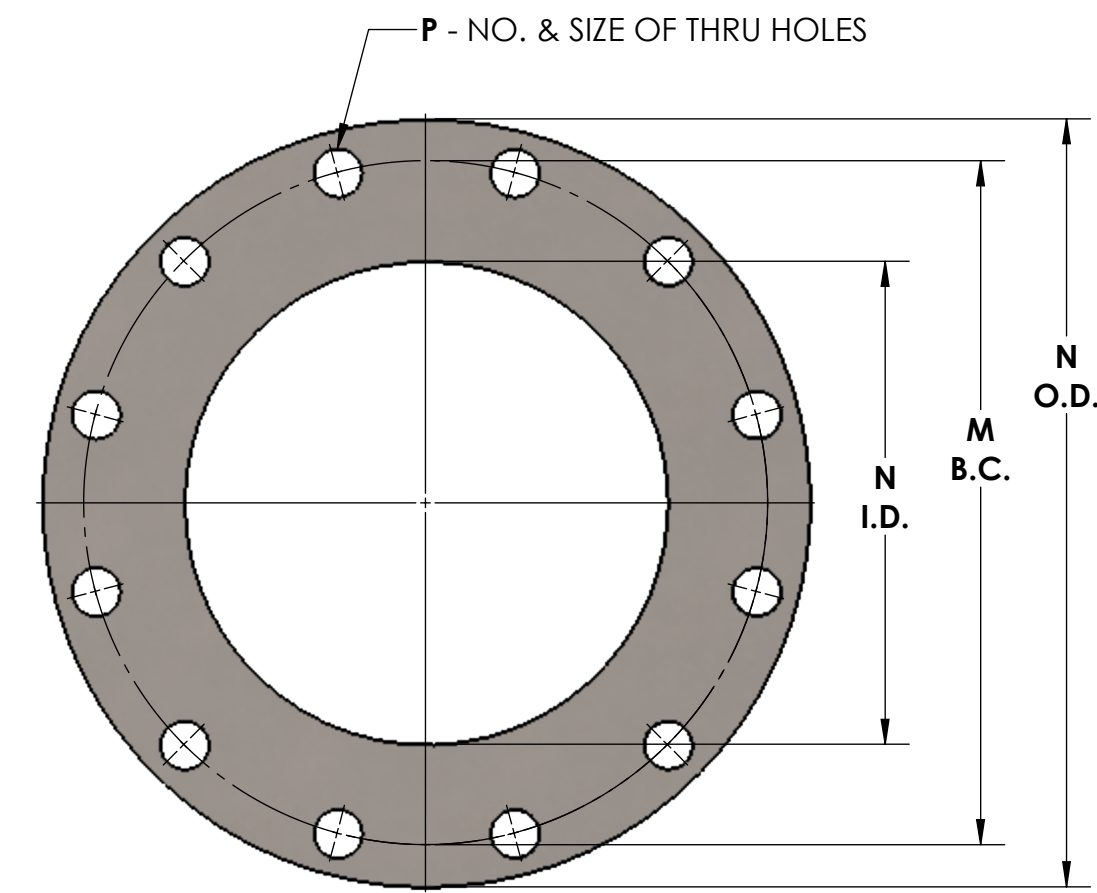
ROUND INLET & OUTLET FLANGE DETAIL
SIZES 4" THRU 8" ONLY
150# ANSI DRILLING



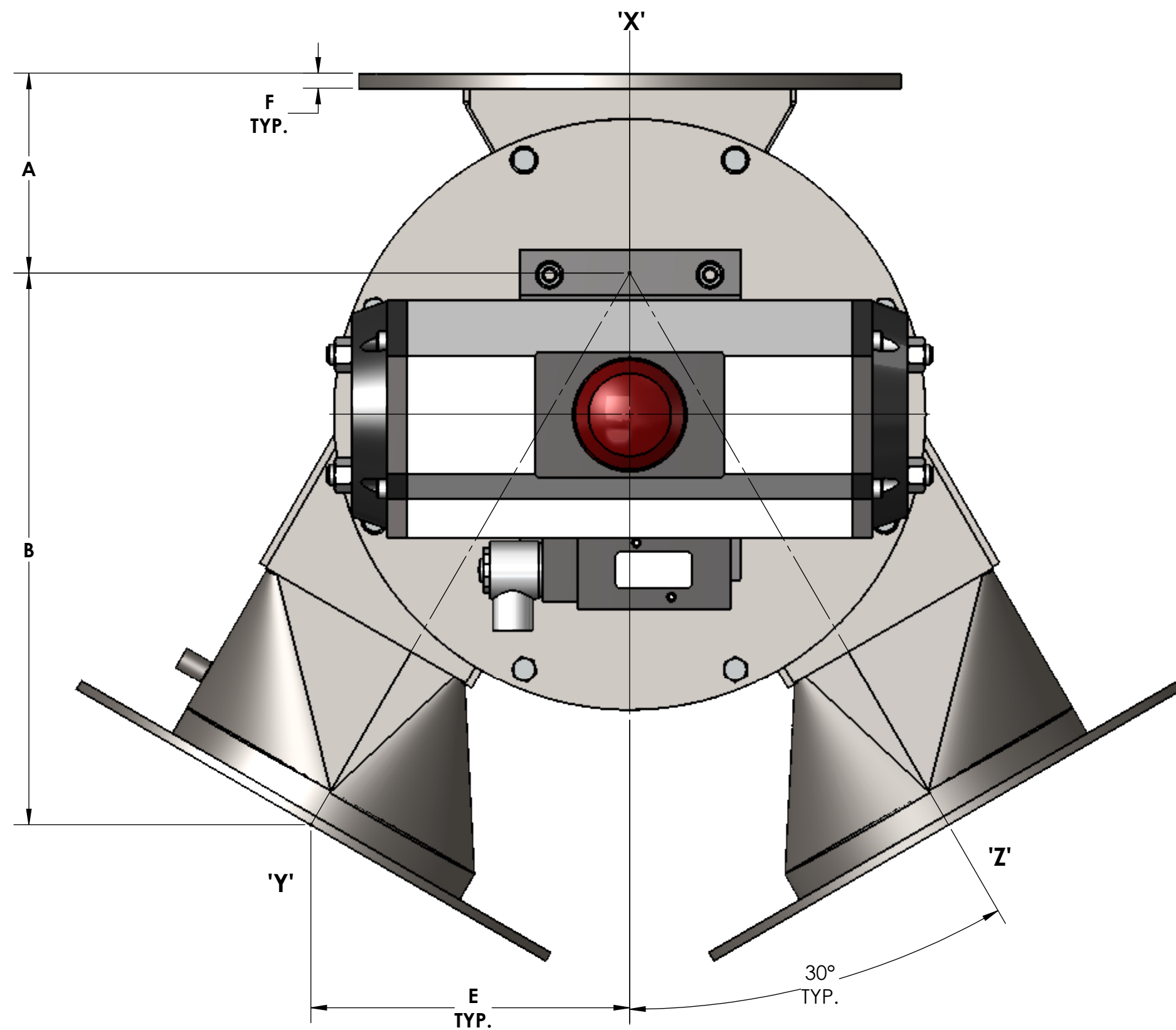
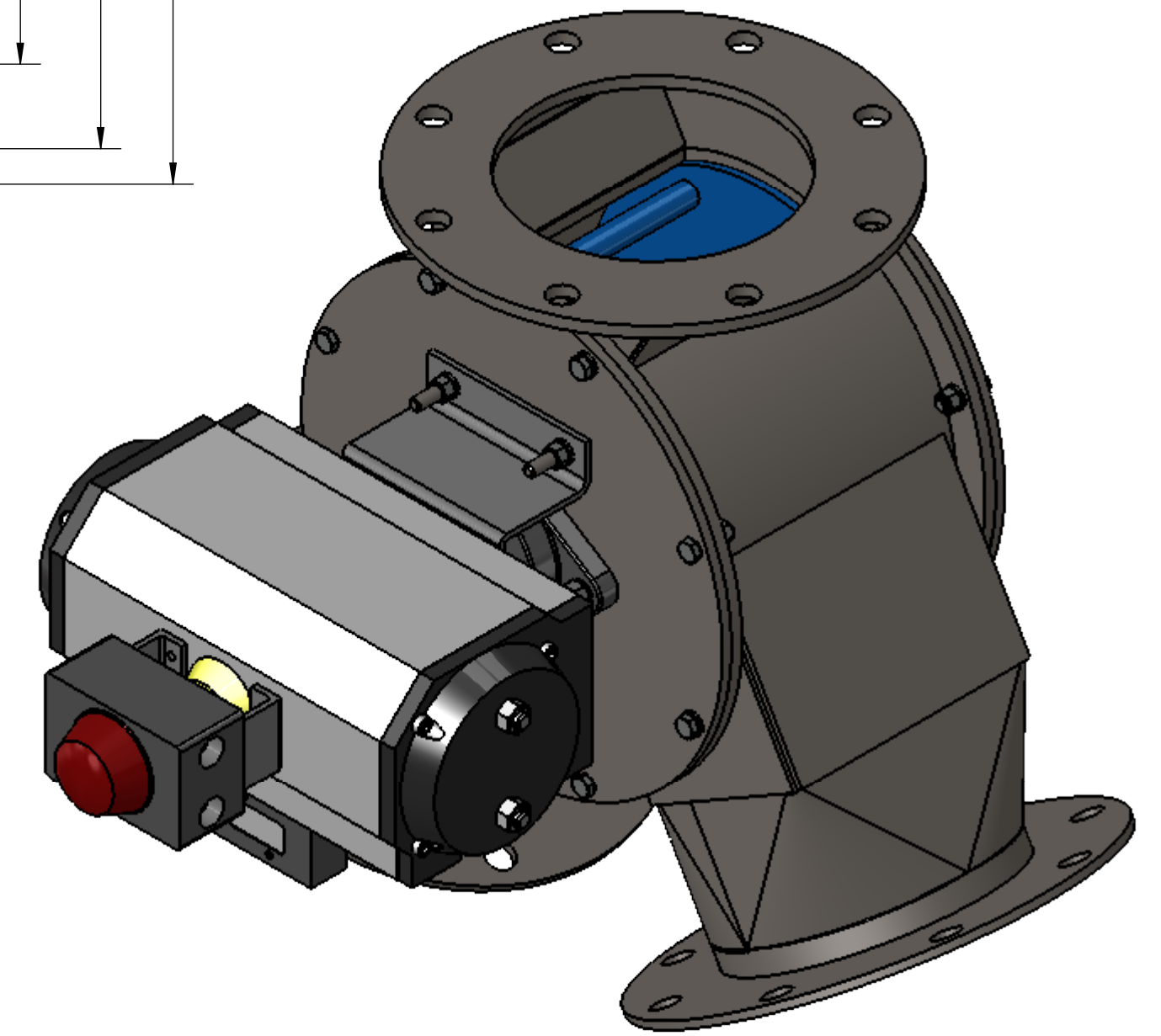
SQUARE INLET & OUTLET FLANGE DETAIL



ROUND INLET FLANGE DETAIL
SIZES 10" AND 12" ONLY
150# ANSI DRILLING

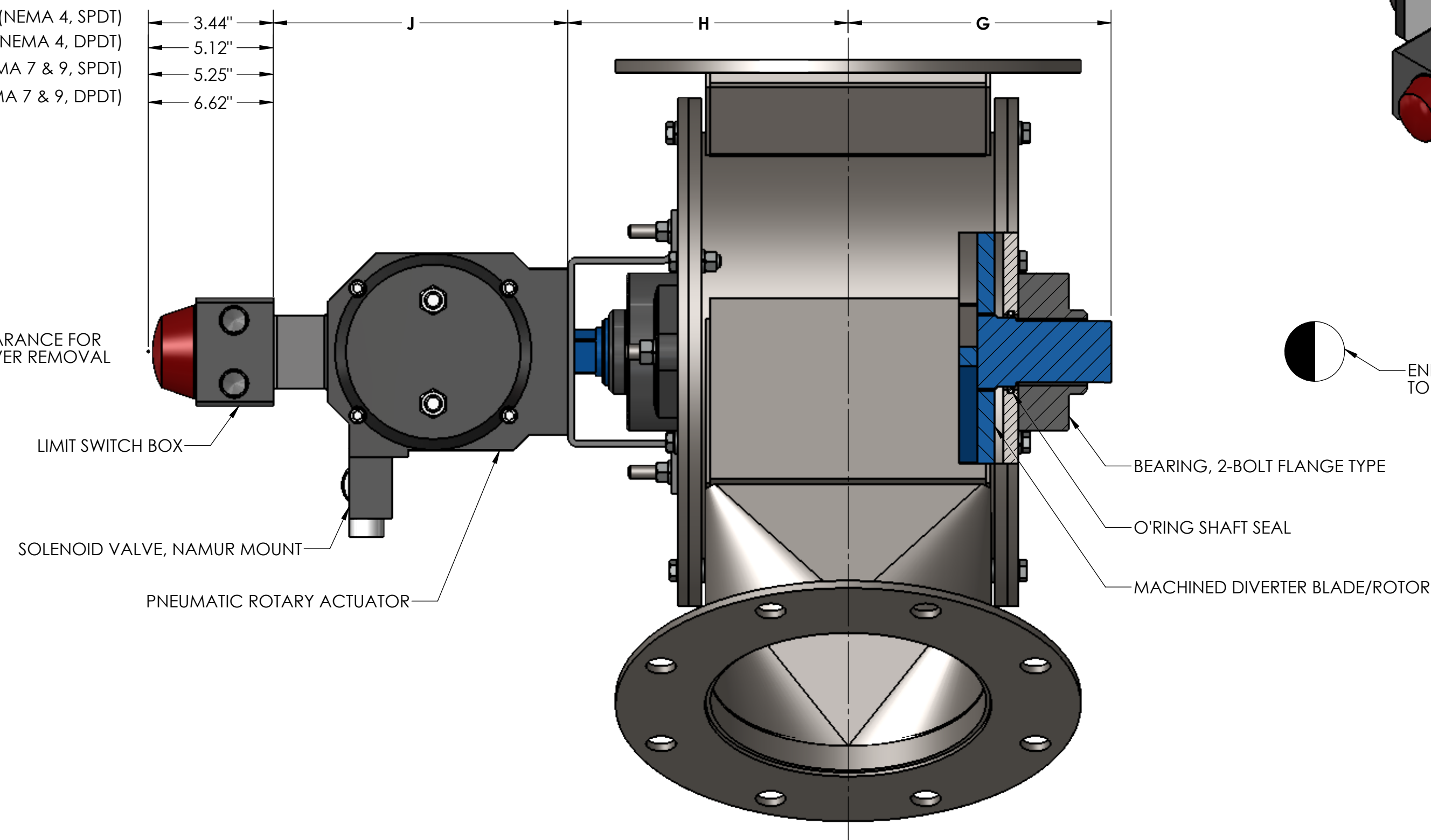


ROUND OUTLET FLANGE DETAIL
SIZES 10" AND 12" ONLY
150# ANSI DRILLING



(NEMA 4, SPDT) 3.44"
(NEMA 4, DPDT) 5.12"
(NEMA 7 & 9, SPDT) 5.25"
(NEMA 7 & 9, DPDT) 6.62"

NOTE: ALLOW CLEARANCE FOR SWITCH COVER REMOVAL



END OF SHAFT PAINTED YELLOW TO INDICATE GATE POSITION

CERTIFICATION

CUSTOMER: _____	CUSTOMER NO: _____
	Y.I. ORDER NO: _____
	QUANTITY: _____
MATERIALS OF CONSTRUCTION:	SOLENOIDS:
HOUSING: _____	TYPE: _____
SIDE PLATES: _____	VOLTAGE: _____
GATE: _____	ENCLOSURE: _____
SHAFT: _____	
SEAL MATERIALS:	LIMIT SWITCHES:
HOUSING: _____	TYPE: _____
GATE: _____	
SHAFT: _____	ENCLOSURE: _____
TYPES OF ENDS:	REMARKS: _____
X: _____	
Y: _____	
Z: _____	
DIMENSIONS ON THIS DRAWING ARE CERTIFIED CORRECT FOR THIS ORDER	
PER: _____	DATE: _____
VALVE IS DESIGNED FOR 15 PSIG (MAX) INTERNAL & DIFFERENTIAL PRESSURE @250°F	

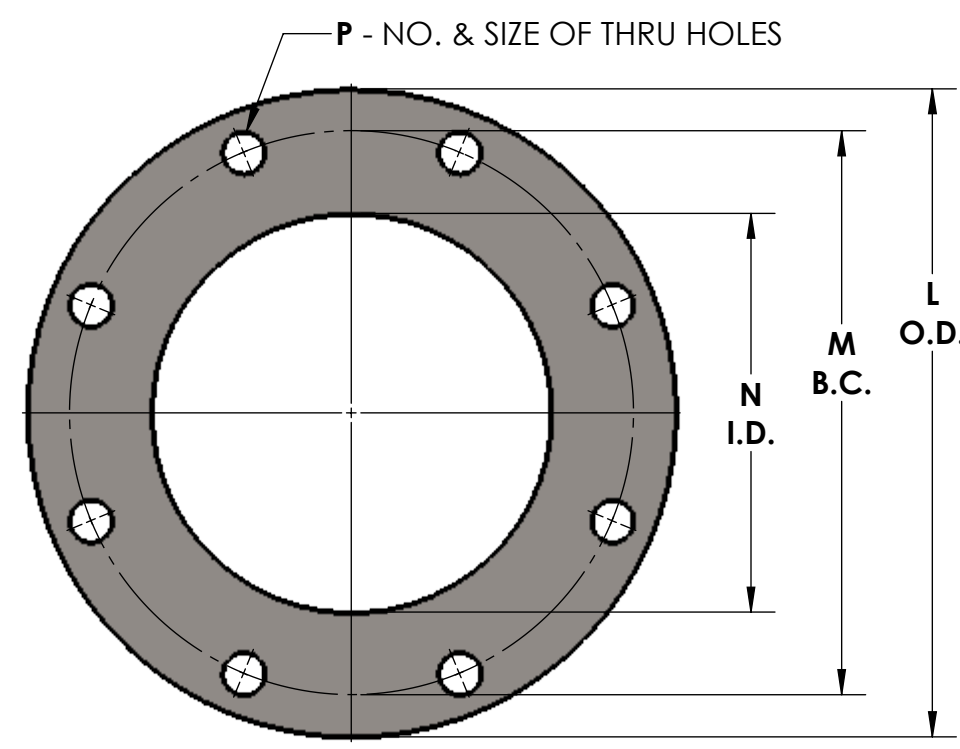
SIZE	A	B	C	D	E	F	G	H	J	L	M	N	P	Q	R	S	T	U	V
4	3.50	8.88	1.56	10.25	5.12	.25	4.75	5.25	5.59	9.00	7.50	4.00	(8) .75	7.50	4.00	.62	3.12	-	(8) .56
5	4.00	10.31	2.38	11.88	5.94	.25	5.25	5.75	5.59	10.00	8.50	5.00	(8) .88	8.50	5.00	.62	3.62	-	(8) .56
6	4.12	11.88	3.25	13.69	6.81	.25	5.75	6.25	5.59	11.00	9.50	6.00	(8) .88	9.50	6.00	.62	4.12	-	(8) .56
8	5.00	13.75	3.50	15.88	7.94	.38	7.50	8.00	9.38	13.50	11.75	8.00	(8) .88	11.50	8.00	.62	5.12	2.56	(16) .56
10	5.50	16.88	4.62	19.50	9.75	.38	8.50	9.00	9.38	16.00	14.25	10.00	(12) 1.00	14.75	10.00	1.00	6.38	3.19	(16) .56
12	7.31	17.81	4.62	20.56	10.25	.38	9.50	10.00	9.38	19.00	17.00	12.00	(12) 1.00	16.75	12.00	1.00	7.38	3.69	(16) .56
14	7.75	18.25	4.00	21.00	10.50	.38	11.00	11.75	13.06	21.00	18.75	13.00	(12) 1.00	18.75	14.00	1.00	8.38	4.19	(16) .56
16	8.25	21.75	5.00	25.12	11.50	.38	11.50	12.75	13.06	23.50	21.25	15.00	(12) 1.00	20.75	16.00	1.00	9.38	4.69	(16) .56

NOTES:

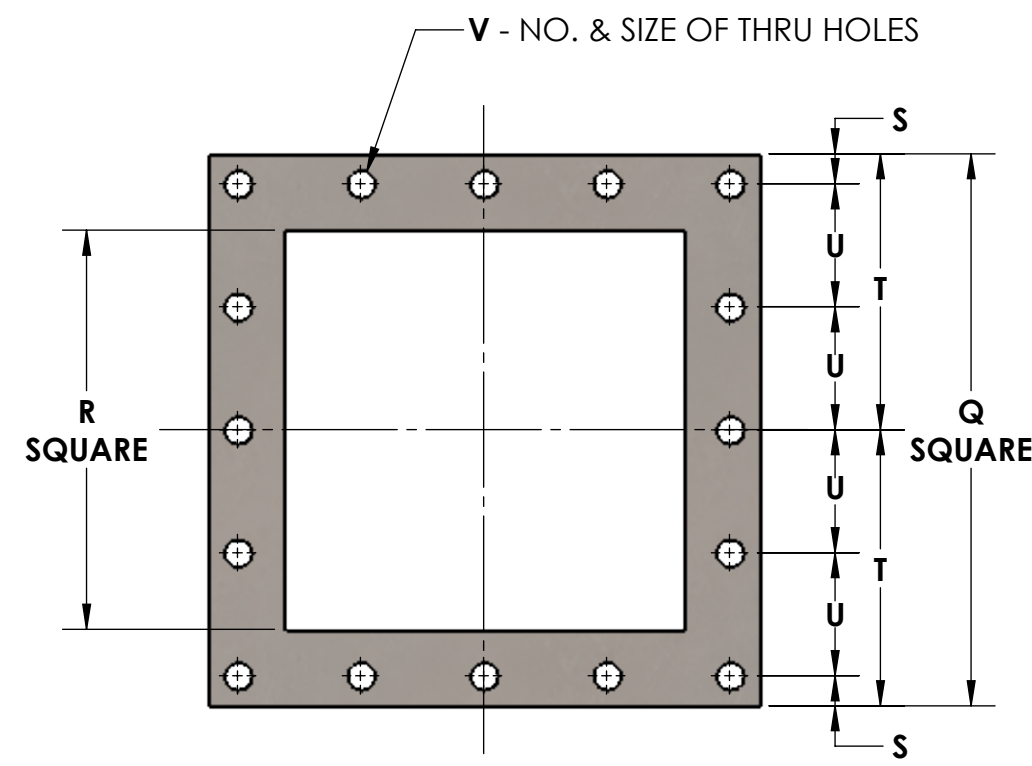
- VALVES ARE FABRICATED CONSTRUCTION. AVAILABLE IN STEEL, ALUMINUM AND STAINLESS STEEL
- VALVES ARE AVAILABLE WITH ROUND OR SQUARE FLANGED ENDS OR PLAIN ENDS.

GENERAL TOLERANCES	
UNLESS OTHERWISE SPECIFIED THE FOLLOWING SHALL APPLY	
MACHINING - .XX= .02 .XXX= .005 ANGLE= .50°	
SURFACE ROUGHNESS HEIGHT 63 MICRONS OR LESS	
FABRICATION - UNDER 6" 6 TO 24" 24 TO 60" OVER 60"	
± .06 ± .12 ± .19 ± .25	
UNLESS OTHERWISE SPECIFIED DIMENSIONS ARE IN INCHES	

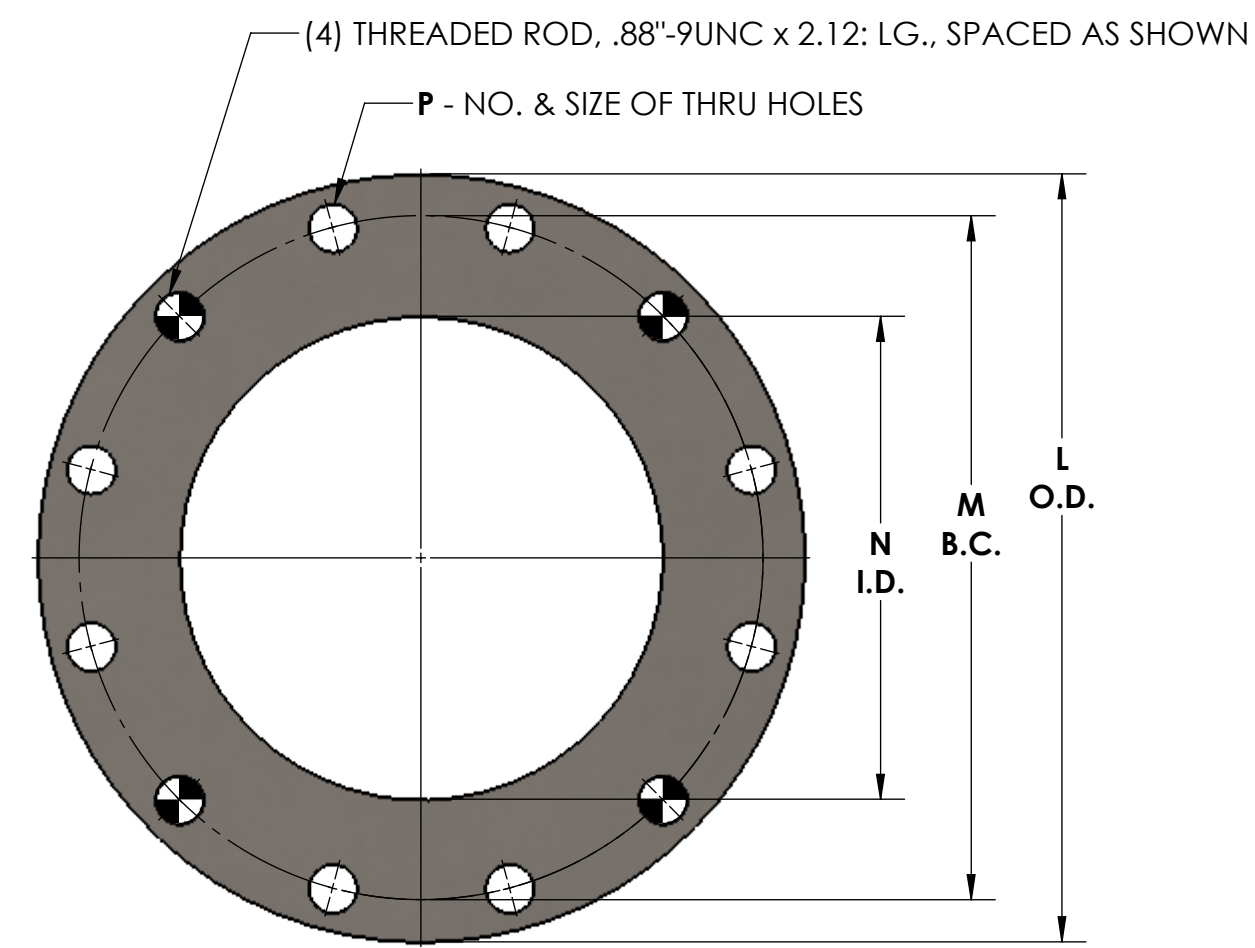
REV. NO.	DESCRIPTION	DATE	BY
REVISIONS			
CUSTOMER: _____			
CUST. NO. _____			
YOUNG ORDER NO. _____			
TITLE YOUNG INDUSTRIES 30 DEGREE ROTARY VANE DIVERTER VALVE, MODEL 'VT' W/ PNEUMATIC ACTUATOR, STANDARD DIMENSION SHEET			
INDUSTRIES, INC. HUNCY, PENNSYLVANIA 17756 TELEPHONE: 570-546-3165			
DRAWN BY: BMF	DATE DRAWN: 10/25/18		
CHECKED BY: _____	SCALE: 1:4		
DRAWING NUMBER	S-4-6333		REV: 00



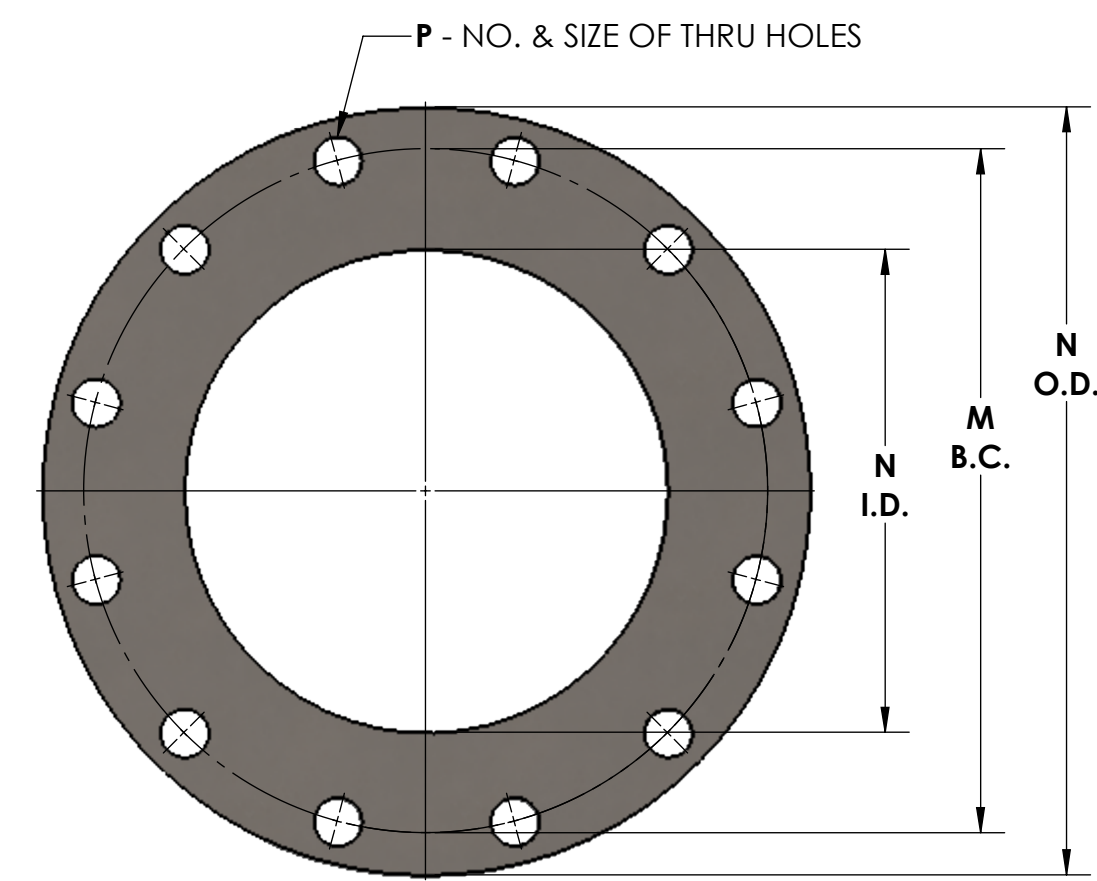
ROUND INLET & OUTLET FLANGE DETAIL
SIZES 4" THRU 8" ONLY
150# ANSI DRILLING



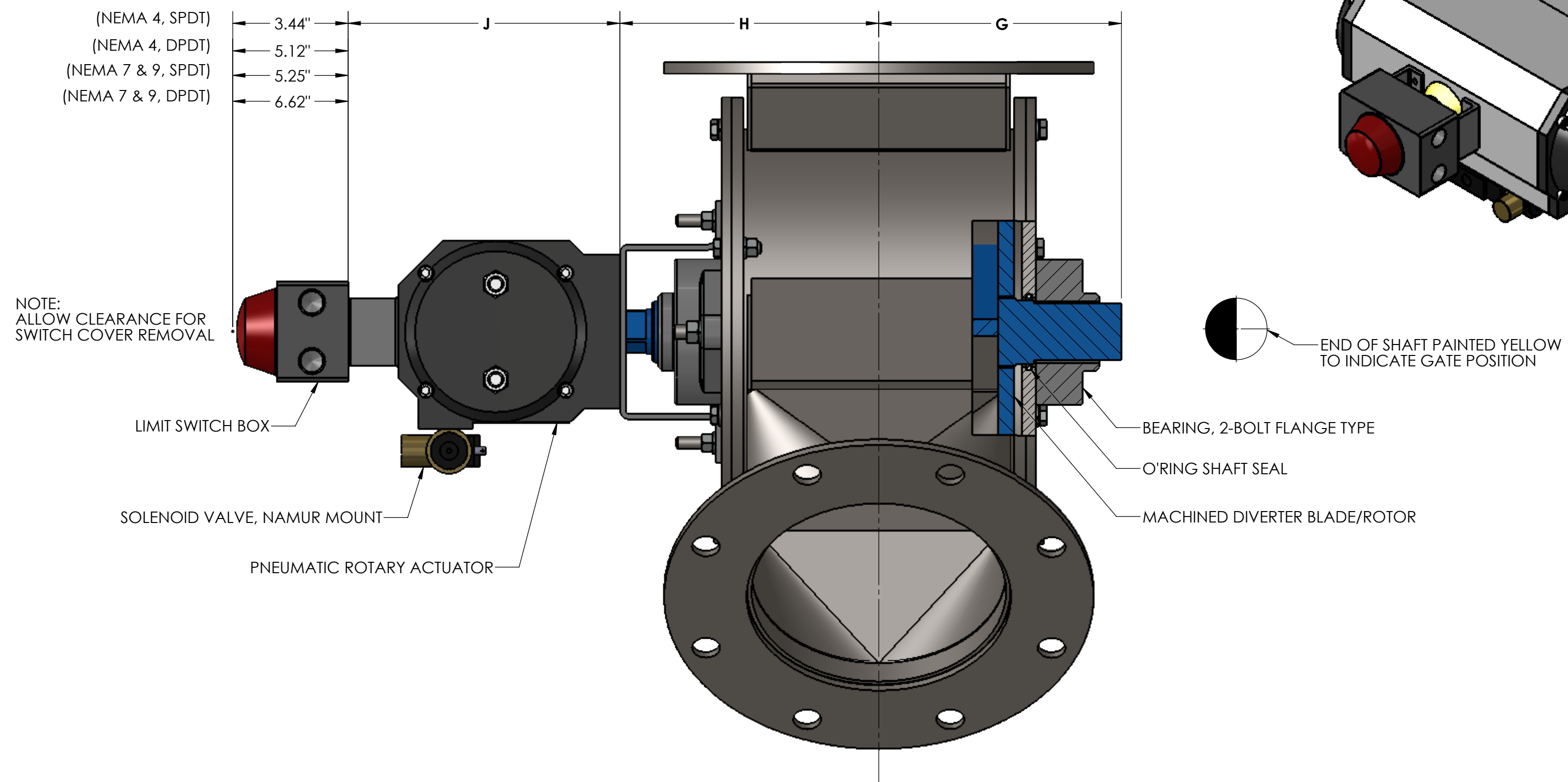
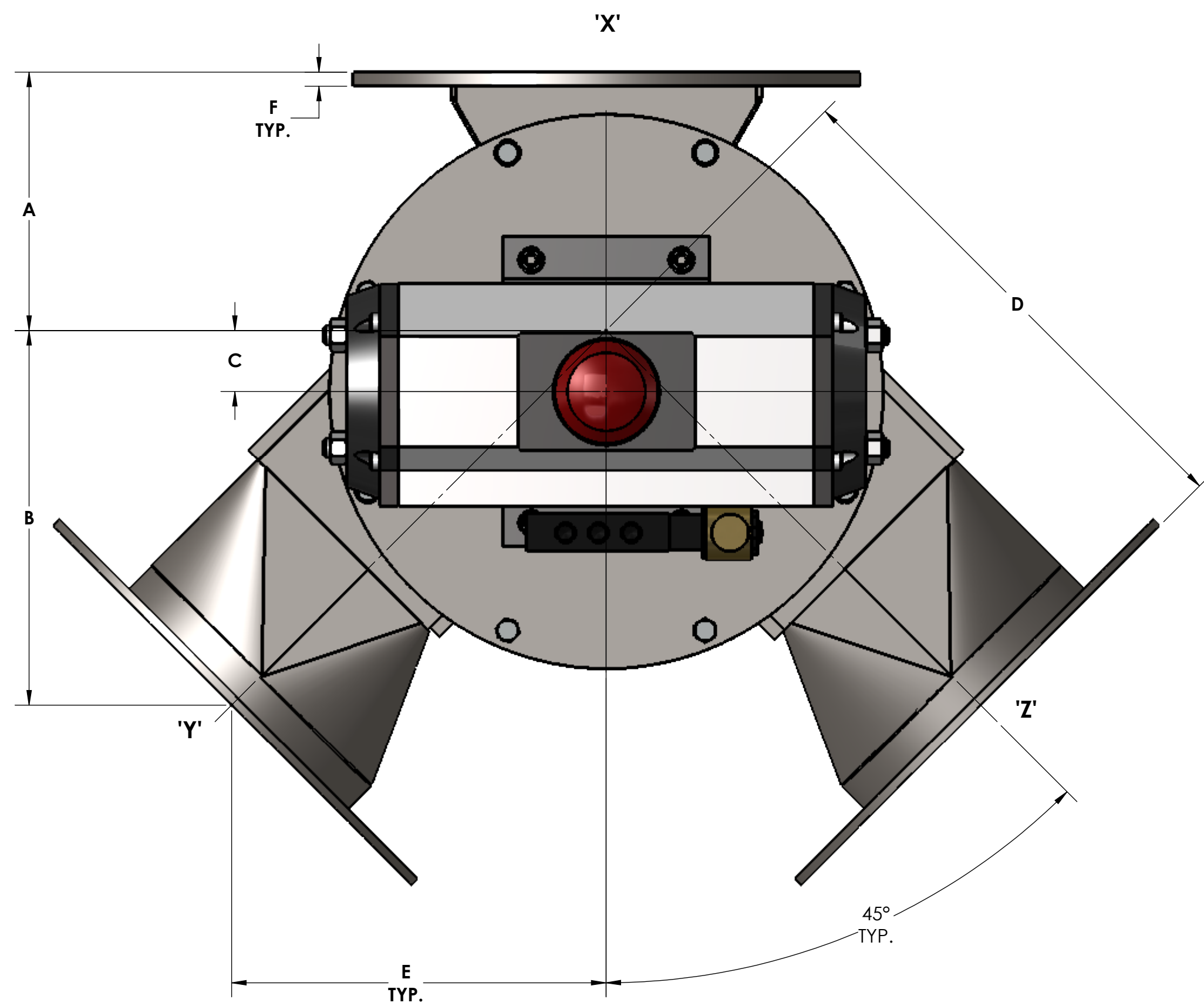
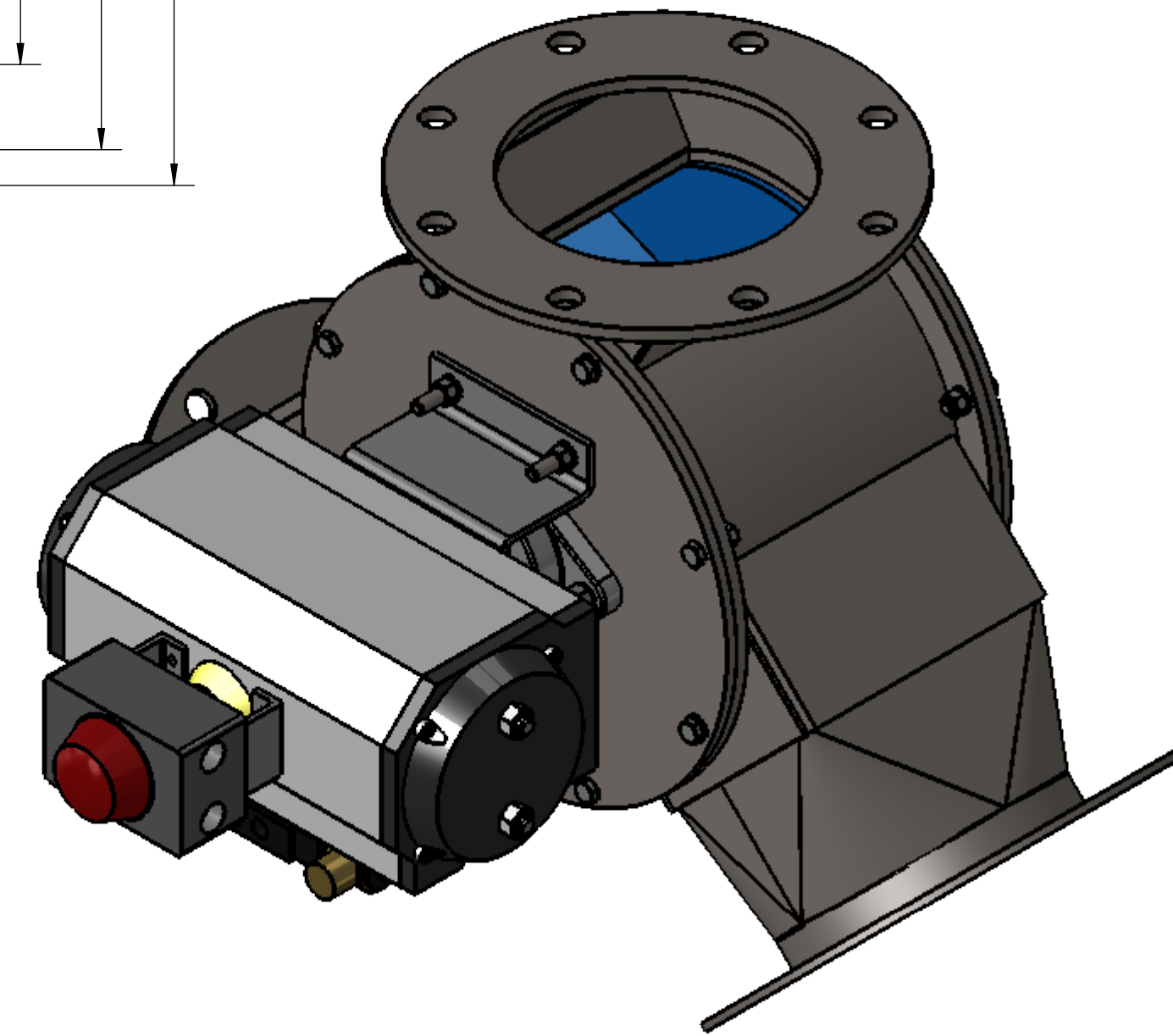
SQUARE INLET & OUTLET FLANGE DETAIL



ROUND INLET FLANGE DETAIL
SIZES 10" AND 12" ONLY
150# ANSI DRILLING



ROUND OUTLET FLANGE DETAIL
SIZES 10" AND 12" ONLY
150# ANSI DRILLING



NOTE:
ALLOW CLEARANCE FOR
SWITCH COVER REMOVAL

CERTIFICATION	
CUSTOMER: _____	CUSTOMER NO: _____
	Y.I. ORDER NO: _____
	QUANTITY: _____
MATERIALS OF CONSTRUCTION:	SOLENOIDS:
HOUSING: _____	TYPE: _____
SIDE PLATES: _____	VOLTAGE: _____
GATE: _____	ENCLOSURE: _____
SHAFT: _____	
SEAL MATERIALS:	LIMIT SWITCHES:
HOUSING: _____	TYPE: _____
GATE: _____	
SHAFT: _____	ENCLOSURE: _____
TYPES OF ENDS:	REMARKS: _____
X: _____	
Y: _____	
Z: _____	
DIMENSIONS ON THIS DRAWING ARE CERTIFIED CORRECT FOR THIS ORDER	
PER: _____	DATE: _____
VALVE IS DESIGNED FOR 15 PSIG (MAX) INTERNAL & DIFFERENTIAL PRESSURE @250°F	

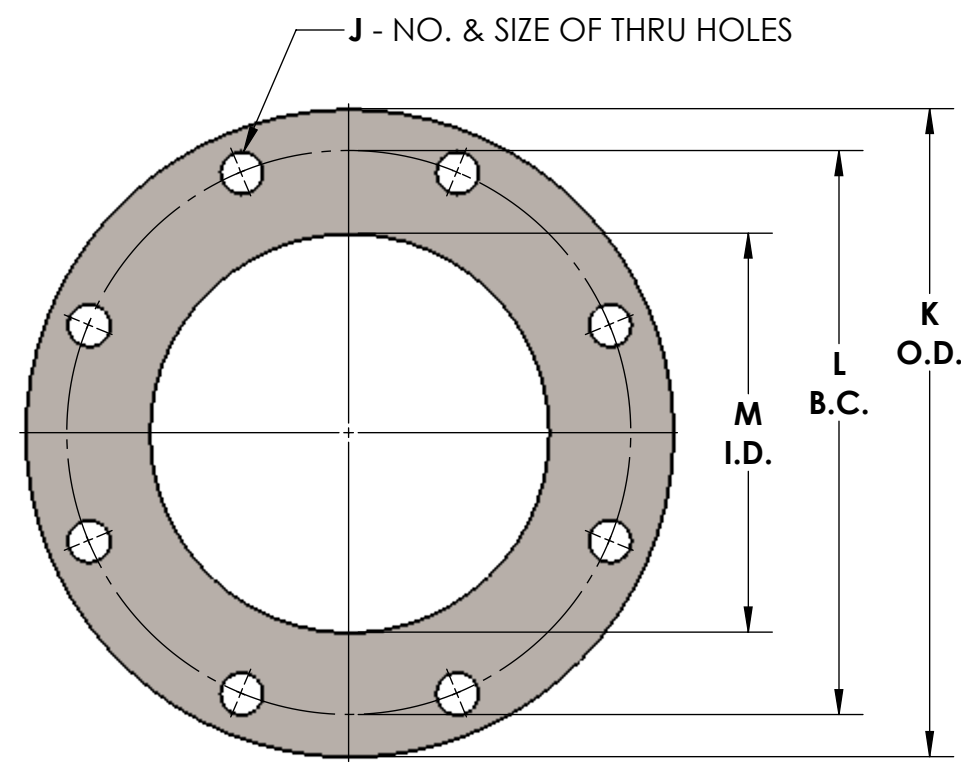
SIZE	A	B	C	D	E	F	G	H	J	L	M	N	P	Q	R	S	T	U	V
4	4.69	6.38	.38	9.00	6.38	.25	4.75	5.25	5.59	9.00	7.50	4.00	(8).75	7.50	4.00	.62	3.12	-	(8).56
5	5.62	7.38	.81	10.44	7.38	.25	5.25	5.75	5.59	10.00	8.50	5.00	(8).88	8.50	5.00	.62	3.62	-	(8).56
6	6.19	8.25	1.19	11.69	8.25	.25	5.75	6.25	5.59	11.00	9.50	6.00	(8).88	9.50	6.00	.62	4.12	-	(8).56
8	6.88	9.88	1.62	14.00	9.88	.38	7.50	8.00	9.38	13.50	11.75	8.00	(8).88	11.50	8.00	.62	5.12	2.56	(16).56
10	8.00	11.31	1.88	16.00	11.31	.38	8.50	9.00	9.38	16.00	14.25	10.00	(12)1.00	14.75	10.00	1.00	6.38	3.19	(16).56
12	10.00	12.62	2.12	17.88	12.62	.38	9.50	10.00	9.38	19.00	17.00	12.00	(12)1.00	16.75	12.00	1.00	7.38	3.69	(16).56

NOTES:

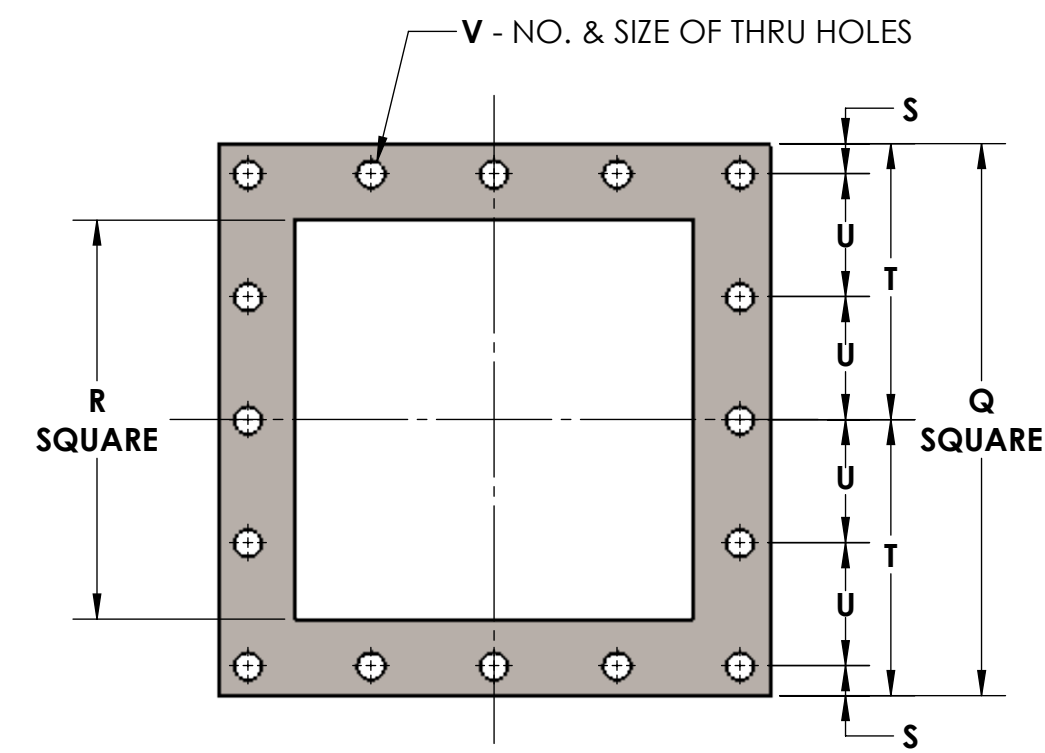
- VALVES ARE FABRICATED CONSTRUCTION, AVAILABLE IN STEEL, ALUMINUM AND STAINLESS STEEL
- VALVES ARE AVAILABLE WITH ROUND OR SQUARE FLANGED ENDS OR PLAIN ENDS.

GENERAL TOLERANCES	
UNLESS OTHERWISE SPECIFIED THE FOLLOWING SHALL APPLY	
MACHINING - .XX= .02 .XXX= .005 ANGLE= .50°	
SURFACE ROUGHNESS HEIGHT 63 MICRONS OR LESS	
FABRICATION - UNDER 6 TO 24 24 TO 60 OVER 60	
± .06 ± .12 ± .19 ± .25	
UNLESS OTHERWISE SPECIFIED DIMENSIONS ARE IN INCHES	

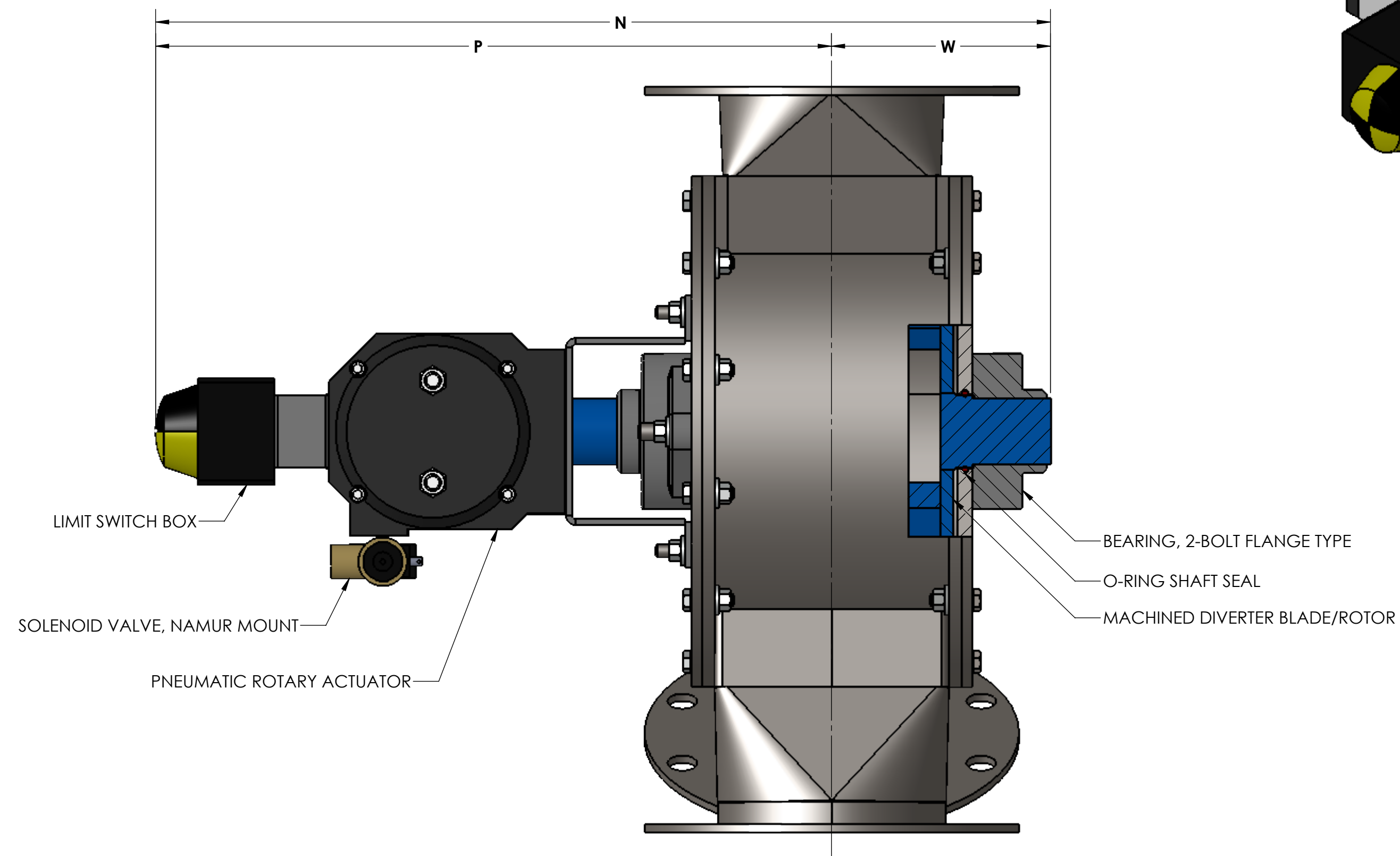
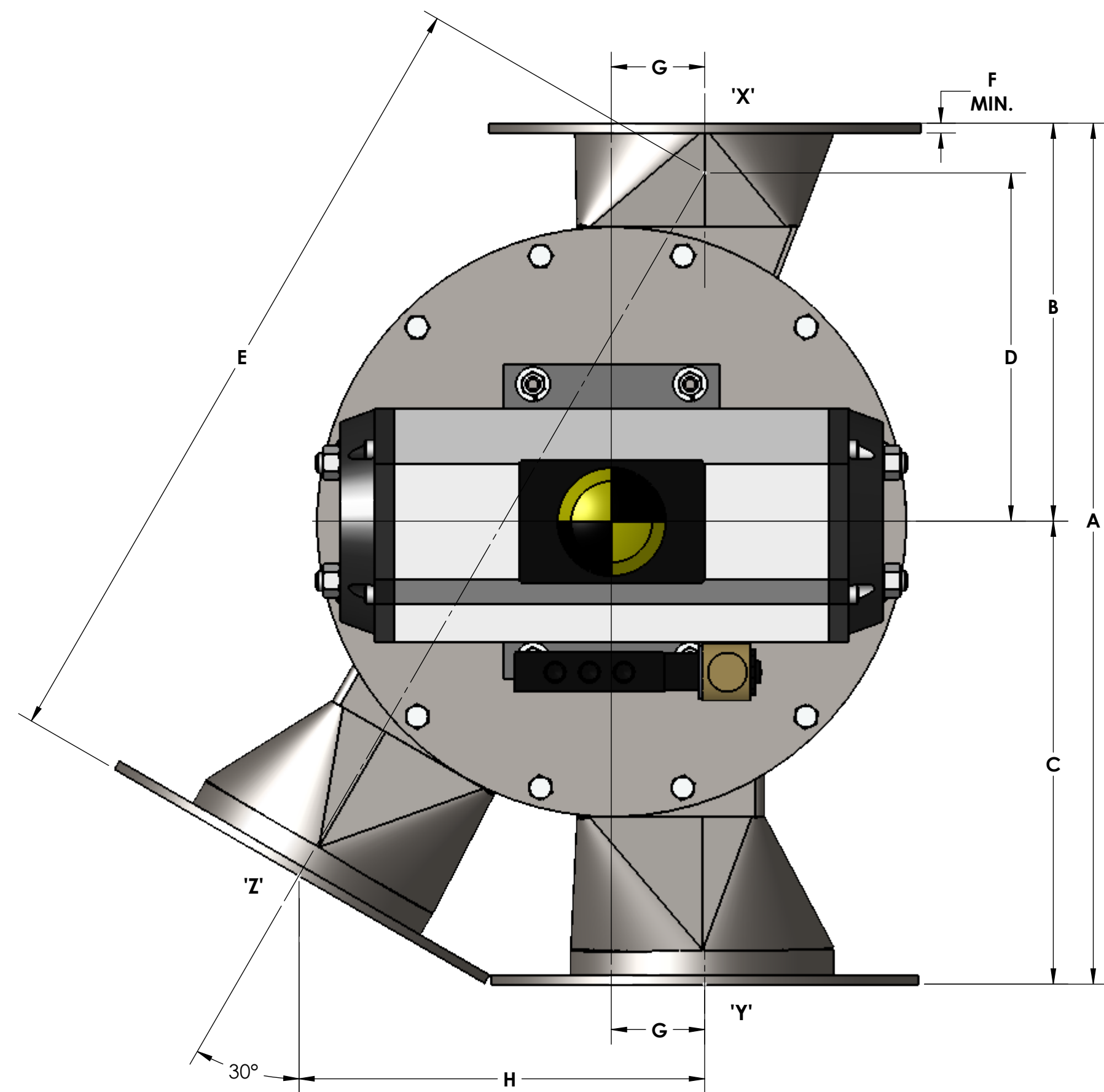
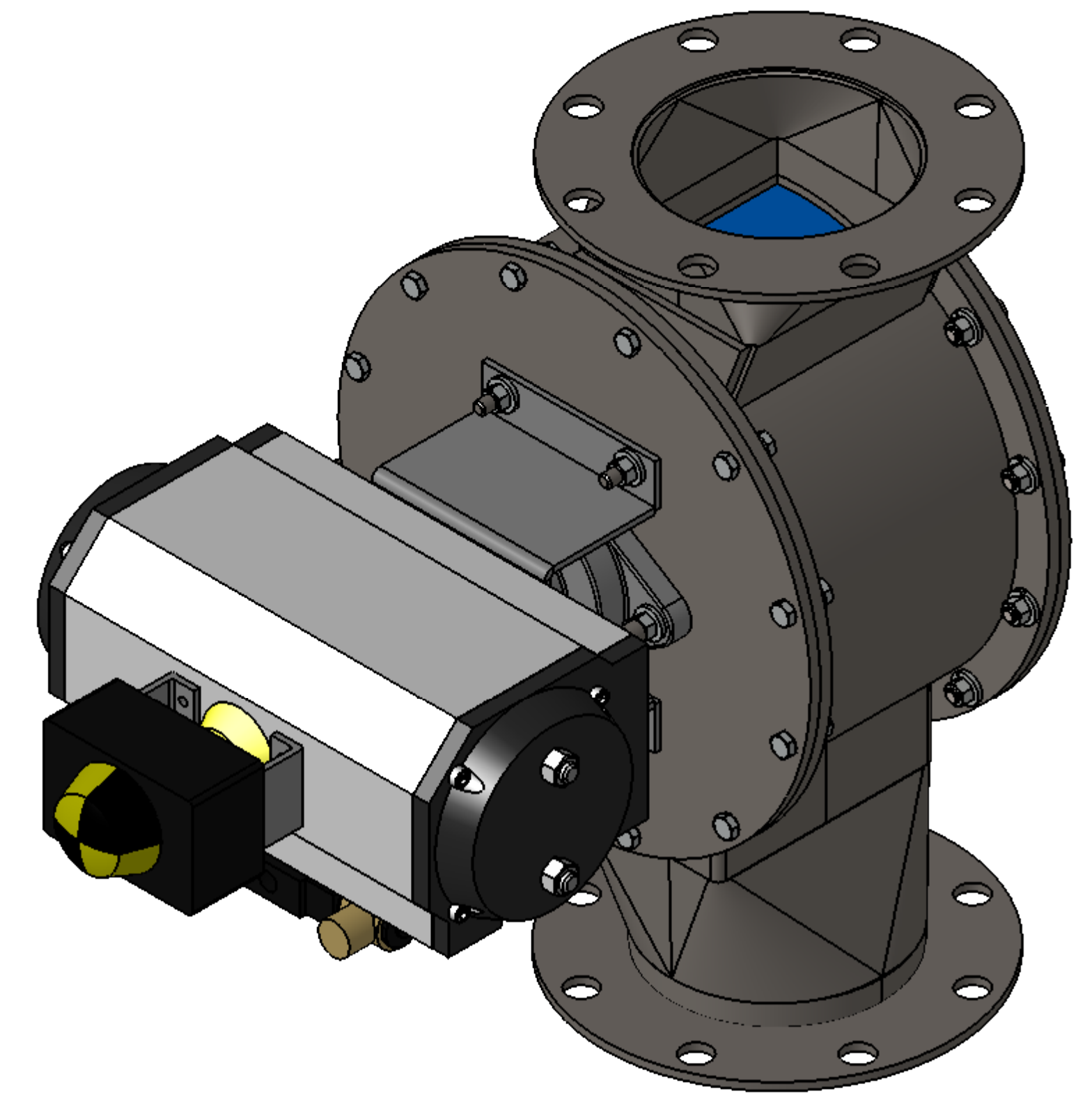
REV. NO.	DESCRIPTION	DATE	BY
REVISIONS			
CUSTOMER: _____			
CUST. NO: _____			
YOUNG ORDER NO: _____			
TITLE YOUNG INDUSTRIES 45 DEGREE ROTARY VANE DIVERTER VALVE, MODEL 'VT' W/ PNEUMATIC ACTUATOR, STANDARD DIMENSION SHEET			
 INDUSTRIES, INC. HUNCY, PENNSYLVANIA 17756 TELEPHONE: 970-546-3165			
DRAWN BY: BMF	DATE DRAWN: 10/25/18		
CHECKED BY: _____	SCALE: 1:4		
DRAWING NUMBER	S-4-6337		REV: _____



ROUND INLET & OUTLET FLANGE DETAIL
150# ANSI DRILLING



SQUARE INLET & OUTLET FLANGE DETAIL



CERTIFICATION	
CUSTOMER: _____	CUSTOMER NO: _____
	Y.I. ORDER NO: _____
	QUANTITY: _____
MATERIALS OF CONSTRUCTION:	SOLENOIDS:
HOUSING: _____	TYPE: _____
SIDE PLATES: _____	VOLTAGE: _____
GATE: _____	ENCLOSURE: _____
SHAFT: _____	
SEAL MATERIALS:	LIMIT SWITCHES:
HOUSING: _____	TYPE: _____
GATE: _____	
SHAFT: _____	ENCLOSURE: _____
TYPES OF ENDS:	REMARKS: _____
X: _____	
Y: _____	
Z: _____	
DIMENSIONS ON THIS DRAWING ARE CERTIFIED CORRECT FOR THIS ORDER	
PER: _____	DATE: _____
VALVE IS DESIGNED FOR 15 PSIG (MAX) INTERNAL & DIFFERENTIAL PRESSURE @250°F	

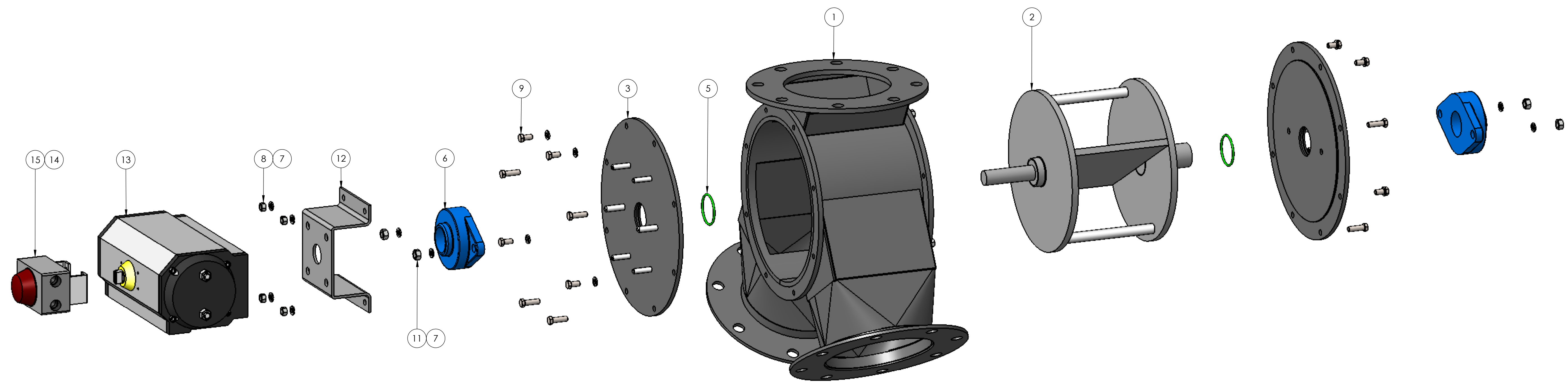
SIZE	A	B	C	D	E	F	G	H	J	K	L	M	N	P	Q	R	S	T	U	V	W
3	17.00	8.12	8.88	5.12	14.00	.25	1.38	7.00	(4) - .75" DIA.	7.50	6.00	3.12	17.06	12.56	-	-	-	-	-	-	4.5
4	19.00	8.50	10.50	6.31	16.81	.25	1.69	8.41	(8) - .75" DIA.	9.00	7.50	4.12	18.06	13.06	7.50	4	0.62	3.12	-	(8) .56	5
5	20.50	9.38	11.12	7.47	18.59	.25	2.00	9.28	(8) - .88" DIA.	10.00	8.50	5.12	19.06	13.56	8.50	5	0.62	3.62	-	(8) .56	5.5
6	22.25	10.38	11.88	8.62	20.50	.25	2.31	10.25	(8) - .88" DIA.	11.00	9.50	6.12	20.06	14.06	9.50	6	0.62	4.12	-	(8) .56	6
8	26.50	12.38	14.12	10.97	25.09	.38	2.94	12.53	(8) - .88" DIA.	13.50	11.75	8.25	28.75	20.94	11.50	8	0.62	5.12	2.56	(16) .56	7.81
10	31.00	14.75	16.25	13.50	29.81	.38	3.62	14.88	(12) - 1.00" DIA.	16.00	14.25	10.25	30.75	21.94	14.75	10	1.00	6.38	3.19	(16) .56	8.81
12	36.25	17.12	19.12	15.94	35.06	.38	4.38	17.75	(12) - 1.00" DIA.	19.00	17.00	12.25	33.25	23.19	16.75	12	1.00	7.38	3.69	(16) .56	10.06

- NOTES:**
- VALVES ARE FABRICATED CONSTRUCTION. AVAILABLE IN STEEL, STAINLESS STEEL AND ALUMINUM.
 - VALVES ARE AVIABLE WITH ROUND OR SQUARE FLANGED ENDS OR PLAINENDS.

GENERAL TOLERANCES	
UNLESS OTHERWISE SPECIFIED THE FOLLOWING SHALL APPLY	
MACHINING - .XX= .02 XXX= .005 ANGLE= .50°	SURFACE ROUGHNESS HEIGHT 63 MICRORINCHES OR LESS
FABRICATION - UNDER 6 6 TO 24 24 TO 60 OVER 60	± .06 ± .12 ± .19 ± .25
UNLESS OTHERWISE SPECIFIED DIMENSIONS ARE IN INCHES	

REV. NO.	DESCRIPTION	DATE	BY
REVISIONS			
CUSTOMER: _____			
CUST. NO: _____			
YOUNG ORDER NO: _____			
TITLE YOUNG INDUSTRIES 30 DEGREE ROTARY VANE DIVERTER VALVE, MODEL 'RVT' W/ PNEUMATIC ACTUATOR, STANDARD DIMENSION SHEET			
 THE YOUNG INDUSTRIES, INC. HUNCY, PENNSYLVANIA 17756 TELEPHONE: 570-546-3165			
DRAWN BY: BMF	DATE DRAWN: 10/26/18		
CHECKED BY: _____	SCALE: 1:3		
DRAWING NUMBER	S-4-7388	REV: 00	

ITEM NO.	DESCRIPTION	QTY.
1	HOUSING ASSY, MODEL VT ROTARY DIVERTER VALVE	1
2	GATE ASSY,MODEL VT ROTARY DIVERTER VALVE	1
3	END PLATE ASSY,VT ROTARY DIVERTER VALVE	1
4	END PLATE ASSY,VT ROTARY DIVERTER VALVE	1
5	O-RING DIVERTER VALVE	2
6	DODGE SC 2-BOLT FLANGE BEARING	2
7	WASHER, LOCK, REGULAR, .38 DIA., PLATED	23
8	NUT, HEX, .38-16UNC, PLATED	10
9	BOLT, HEX HEAD, .38-16UNC X 0.75, PLATED	8
10	BOLT, HEX HEAD, .38-16UNC X 1.25, PLATED	8
11	NUT, HEX, .44-14UNC, PLATED	4
12	ACTUATOR MOUNTING BRACKET,VT VALVE,MAX-AIR	1
13	ACTUATOR, PNEUMATIC, MAX-AIR, UT-46	1
14	LIMIT SWITCH MOUNTING BRACKET, MAX-AIR	2
15	LIMIT SWITCH,CA,NEMA 7,MAX-AIR	1



REV. NO.	DESCRIPTION	DATE	BY
REVISIONS			
CUSTOMER:			
CUSTOMER PO NUMBER:			
YOUNG JOB NUMBER:			
TITLE YOUNG INDUSTRIES MODEL 'VT' ROTARY DIVERTER VALVE, SHROUDED ROTOR			
<small>INDUSTRIES, INC. MUNCY, PENNSYLVANIA 17756 TELEPHONE: 570-546-3165</small>			
DRAWN BY: BMF		DATE: 10/1/18	
CHECKED BY:		SCALE=1:4	
DRAWING NUMBER S-20926-00		SHEET 1 OF 1	REV:

GENERAL TOLERANCES			
UNLESS OTHERWISE SPECIFIED THE FOLLOWING SHALL APPLY			
MACHINING - .XX=	.02	.XXX=	.005
ANGLE= .50°			
SURFACE ROUGHNESS HEIGHT 63 MICRONS OR LESS			
FABRICATION - UNDER 6	6 TO 24	24 TO 60	OVER 60
± .06	± .12	± .19	± .25
UNLESS OTHERWISE SPECIFIED DIMENSIONS ARE IN INCHES			